

# Technical data

Pump name 2CDX 70/106 IE3

Customer	Date 2024-06-19	Company
Contact	Item no.	Issued by
Phone	Project	Phone
E-mail	Project ID Proiect redenumit 2024-06-19 09:04:	E-mail

## Requested data

1	Pump type	CENTRIFUGAL PUMPS	Fluid	Water
2	Number of pumps / Reserve	1 / 0	Liquid temperature °C	20
3	Flow m <sup>3</sup> /h		Kin. viscosity mm <sup>2</sup> /s	1.005
4	Head m		Vapour pressure bar	0.0234
5	Geodetic head m		PH value	
6	Inlet pressure (pin) bar	0	Density kg/m <sup>3</sup>	998.3
7	Available system NPSH		Solids Weight %	0
8	Ambient temperature °C	20		

## Pump

9	Pump name	2CDX 70/106 IE3	Frequency Hz	60
10	Design	CENTRIFUGAL PUMPS	Installation type	STANDARD
11	Manufacturer	EBARA	Impeller Diameter	Max. mm -
12	Speed rpm	3400		Designed mm 115(No.2)
13	No. of Stage	2		Min. mm -
14	Connection Suction side	UNI ISO 228	Flow	Operating m <sup>3</sup> /h
15	Connection Discharge side	UNI ISO 228		Max- m <sup>3</sup> /h 5.4
16	Max Working Pressure bar	8		Min- m <sup>3</sup> /h 1.2
17	Shut-off head bar	4.21	Head	Operating m
18	Total weight kg	See the table of "Dimensions".		- (Qmax.) m 28.5
19	Shaft power kW			- (Qmin.) m 41.0
20			Max. Shaft Power at max. impeller kW	0.86
21	Required pump NPSH m		Efficiency %	

## Materials

22	Impeller	AISI 304		
23	Casing	AISI 304		
24	Shaft	AISI 304 (wet extension)		
25				
26				
27				

## Motor

28	Manufacturer	EPE Standard	Insulation class	F
29	Type	TEFC_2CDX 70/106_460_Three Phase	Phases	3~
30	Specific design	IE3 / 60 Hz / Pole pairs 1	Frame size	
31	Rated power kW	0.75	Weight kg	
32	Number of poles	2	Electric voltage V	460
33	Speed rpm	3400	Electric current A	1.5
34	Degree of protection	IP 55		
35				

## Remarks

# Performance curve

Pump name 2CDX 70/106 IE3

Customer	Date 2024-06-19	Company
Contact	Item no.	Issued by
Phone	Project	Phone
E-mail	Project ID Proiect redenumit 2024-06-19 09:04:	E-mail

## Requested data

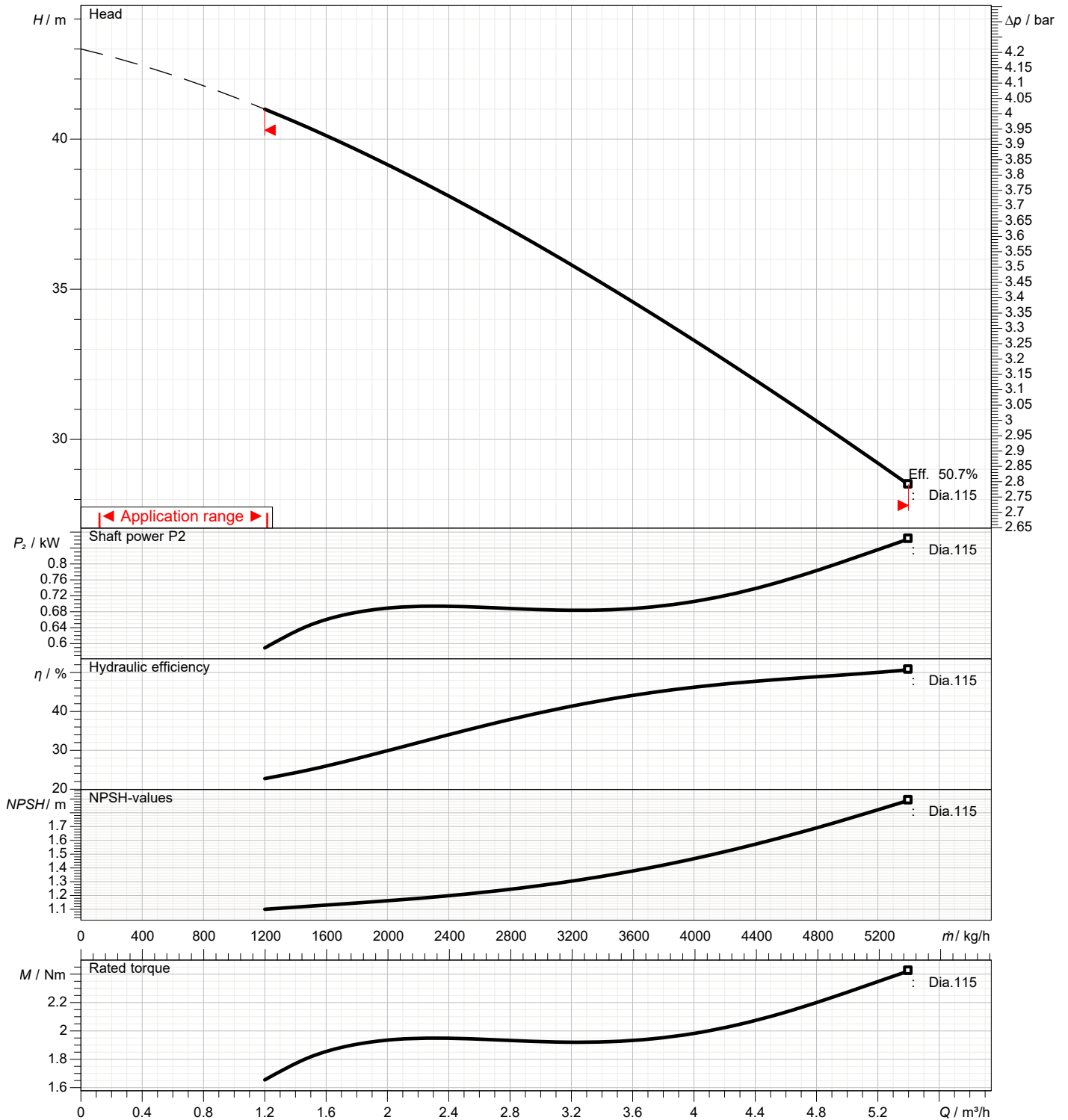
1	Flow	m³/h	
2	Head	m	
3	Geodetic head	m	

## Pump

Operating flow	m³/h	Impeller Diameter Designed	mm	115(No.2)
Operating head	m	Frequency	Hz	60
		Speed	rpm	3400

Test standard: ISO 9906:2012 - Grade3B

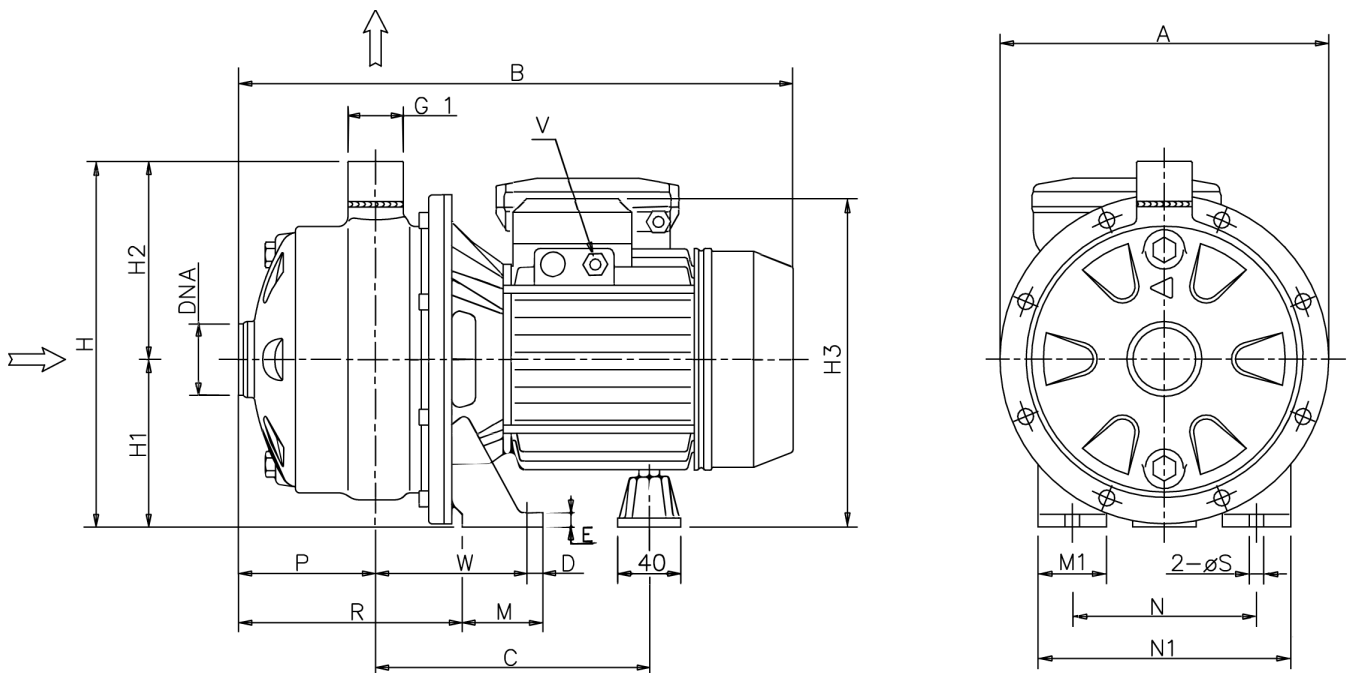
Water; 20°C; 998.3kg/m³; 1mm²/s



# Dimensions

Pump Name 2CDX 70/106 IE3

Customer	Date 2024-06-19	Company
Contact	Item no.	Issued by
Phone	Project	Phone
E-mail	Project ID Proiect redenumit 2024-06-19 09:04:50	E-mail



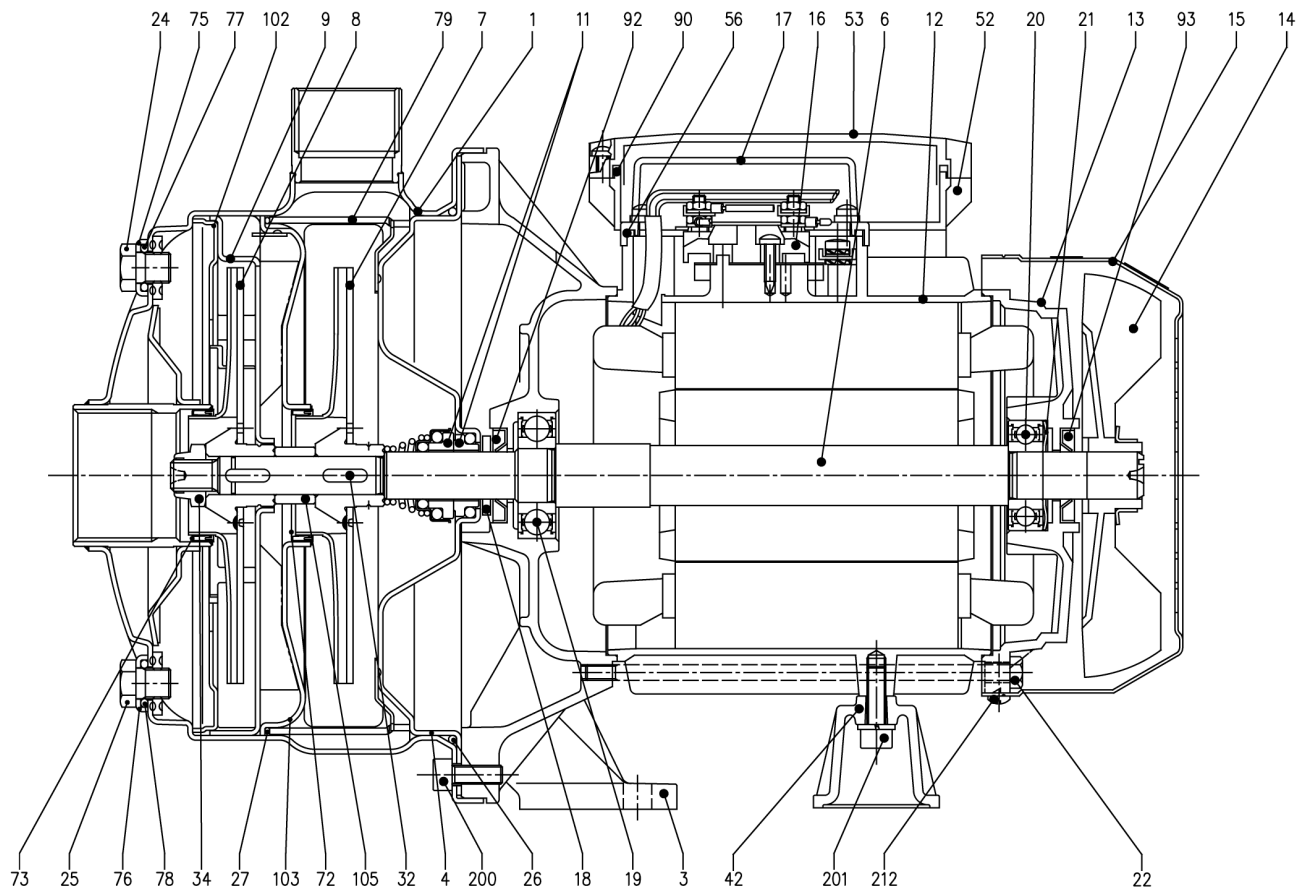
Dimensions in		mm						
1	A	208	P	87				
2	B	354	R	142				
3	C	181	V	[M16x1].5				
4	D	12.5	W	93				
5	Dia S	9	Weight P&M	12 kg				
6	DNA	G 1 1/4						
7	E	8						
8	H	229						
9	H1	106						
10	H2	123						
11	H3	208						
12	M	50						
13	M1	38						
14	N	120						
15	N1	160						

(1/3)

# Construction

Pump Name 2CDX 70/106 IE3

Customer	Date 2024-06-19	Company
Contact	Item no.	Issued by
Phone	Project	Phone
E-mail	Project ID Proiect redenumit 2024-06-19 09:04:50	E-mail



(2/3)

# Construction

Pump Name 2CDX 70/106 IE3

Customer	Date 2024-06-19	Company
Contact	Item no.	Issued by
Phone	Project	Phone
E-mail	Project ID Proiect redenumit 2024-06-19 09:04:50	E-mail

N°	PART NAME	MATERIAL	Q.TY
1	Casing	AISI 304	1
3	Motor bracket	[4]	1
4	Casing cover	AISI 304	1
6	Shaft with rotor	AISI 304 (Wet extension)	1
7	Impeller	AISI 304	1
8	Impeller	AISI 304	1
9	Diffuser	AISI 304	1
11	Mechanical seal [6]	Ceramic/Carbon/NBR	1
12	Motor frame with stator	-	1
13	Motor cover	Aluminium	1
14	Fan	PA	1
15	Fan cover	Fe P04 Zincate	1
16	Terminal board	-	1
17	Terminal box cover [2]	Aluminium	1
18	Splash ring	NBR	1
19	Pump side ball bearing	-	1
20	Fan side ball bearing	-	1
21	Adjusting ring	Steel C70	1
22	Tie rod	Fe 420 Zincate	4
23	Capacitor [1]	-	1
24	Priming plug	AISI 304	1
25	Drain plug	AISI 304	1
26	O-ring [3]	NBR	1
27	O-ring [3]	NBR	1
32	Key	AISI 316	2
34	Impeller nut	AISI 304	1
42	Motor support	Aluminium	1
52	Capacitor box [1]	ABS class V-0	1
53	Capacitor box cover [5]	ABS class V-0	1
56	Box gasket	NBR	1
72	Casing ring [3]	NBR	1
73	Casing ring [3]	NBR	1
75	Washer	AISI 304	1
76	Washer	AISI 304	1
77	O-ring [3]	NBR	1
78	O-ring [3]	NBR	1
79	Space diffuser	AISI 304	1
90	Terminal box cover gasket [7]	NBR	1
92	Lip seal	-	1
93	Lip seal	-	1
102	Suction cover	AISI 304	1
103	Conveyor cover	AISI 304	1
105	Sleeve	AISI 304	1
110	Protector [1]	-	1
200	Screw	Stainless steel A2 UNI7323	8
201	Screw	Zincate Steel	4
212	Screw	Zincate Steel	1

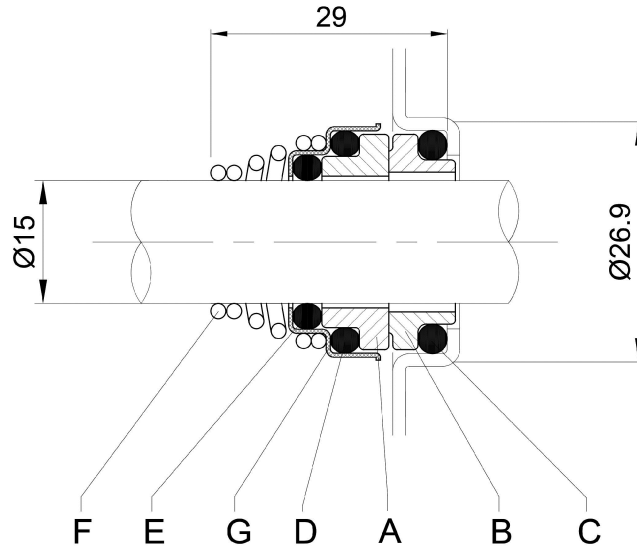
- [1] Only for single phase
- [2] Only for three phase
- [3] FPM for H, HS, HW, HSW  
EPDM for E and Special Mechanical Seals
- [4] Material: Aluminium for version up to 2.2 kW included  
Cast iron for version 3.0 kW and above
- [5] With gasket in NBR only for version single phase 2CDXM 70/106
- [6] See **CONSTRUCTION 3**
- [7] Only for version single phase 2CDXM 70/206; 2CDXM 70/306

(3/3)

# Construction

Pump Name 2CDX 70/106 IE3

Customer	Date 2024-06-19	Company
Contact	Item no.	Issued by
Phone	Project	Phone
E-mail	Project ID Proiect redenumit 2024-06-19 09:04:50	E-mail



REF	PART NAME	MATERIAL Standard
A	Rotary seal ring	Ceramic
B	Stationary seal ring	Carbon graphite
C	O-Ring	NBR
D	O-Ring	NBR
E	O-Ring	NBR
F	Self-driving spring	AISI 316
G	Frame	AISI 304