

# Technical Data

Pump Name

3D4 32-200/0.55

|          |            |            |           |
|----------|------------|------------|-----------|
| Customer | Date       | 09.06.2024 | Company   |
| Contact  | Item no.   |            | Issued by |
| Phone    | Project    |            | Phone     |
| E-mail   | Project ID |            | E-mail    |

## Requested data

|   |                           |                   |                    |          |       |
|---|---------------------------|-------------------|--------------------|----------|-------|
| 1 | Pump type                 | CENTRIFUGAL PUMPS | Fluid              | Water    |       |
| 2 | Number of pumps / Reserve | 1 / 0             | Liquid temperature | °C       | 20    |
| 3 | Flow                      | m³/h              | Kin. viscosity     | cSt      | 1.005 |
| 4 | Head                      | m                 | Vapour pressure    | kPa      | 2.34  |
| 5 | Geodetic head             | m                 | PH value           |          |       |
| 6 | Inlet pressure (pin)      | kPa               | Density            | kg/m³    | 998.3 |
| 7 | Available system NPSH     |                   | Solids             | Weight % | 0     |
| 8 | Ambient temperature       | °C                | 20                 |          |       |

## Pump

|    |                      |                   |                                   |      |           |      |      |
|----|----------------------|-------------------|-----------------------------------|------|-----------|------|------|
| 9  | Pump Name            | 3D4 32-200/0.55   | Frequency                         | Hz   | 50        |      |      |
| 10 | Design               | CENTRIFUGAL PUMPS | Installation type                 |      | STANDARD  |      |      |
| 11 | Manufacturer         | EBARA             | Impeller Diameter                 | Max. | mm        | 200  |      |
| 12 | Speed                | rpm               |                                   | 1400 | Designed  | mm   | 200  |
| 13 | No. of Stage         | 1                 |                                   | Min. | mm        | 200  |      |
| 14 | Connection           | Suction side      | EN 1092-2                         | Flow | Operating | m³/h |      |
| 15 | Connection           | Discharge side    | EN 1092-2                         |      | Max-      | m³/h | 10.5 |
| 16 | Max Working Pressure | kPa               | 1000                              |      | Min-      | m³/h | 3    |
| 17 | Shut-off head        | kPa               | 122.42                            | Head | Operating | m    |      |
| 18 | Total weight         | kg                | See the table of "Dimensions".    |      | - (Qmax.) | m    | 8.0  |
| 19 | Shaft power          | kW                |                                   |      | - (Qmin.) | m    | 12.0 |
| 20 |                      |                   | Max. Shaft Power at max. impeller | kW   |           | 0.47 |      |
| 21 | Required pump NPSH   | m                 | Efficiency                        | %    |           |      |      |

## Materials

|    |          |           |  |  |
|----|----------|-----------|--|--|
| 22 | Casing   | Cast iron |  |  |
| 23 | Impeller | AISI 304  |  |  |
| 24 | Shaft    | AISI 304  |  |  |
| 25 |          |           |  |  |
| 26 |          |           |  |  |
| 27 |          |           |  |  |

## Motor

|    |                      |                                     |                  |                  |     |     |
|----|----------------------|-------------------------------------|------------------|------------------|-----|-----|
| 28 | Manufacturer         | EPE Standard                        | Insulation class | F                |     |     |
| 29 | Type                 | TEFC_3D432-200/0.55_230_Three Phase | Phases           | 3~               |     |     |
| 30 | Specific design      | - / 50 Hz / Pole pairs 2            | Frame size       |                  |     |     |
| 31 | Rated power          | kW                                  | 0.55             | Weight           | kg  |     |
| 32 | Number of poles      | 4                                   | Electric voltage | V                | 230 |     |
| 33 | Speed                | rpm                                 | 1400             | Electric current | A   | 2.6 |
| 34 | Degree of protection | IP 55                               |                  |                  |     |     |
| 35 |                      |                                     |                  |                  |     |     |

## Remarks

# Performance Curve

Pump Name

3D4 32-200/0.55

|          |            |            |           |
|----------|------------|------------|-----------|
| Customer | Date       | 09.06.2024 | Company   |
| Contact  | Item no.   |            | Issued by |
| Phone    | Project    |            | Phone     |
| E-mail   | Project ID |            | E-mail    |

## Requested data

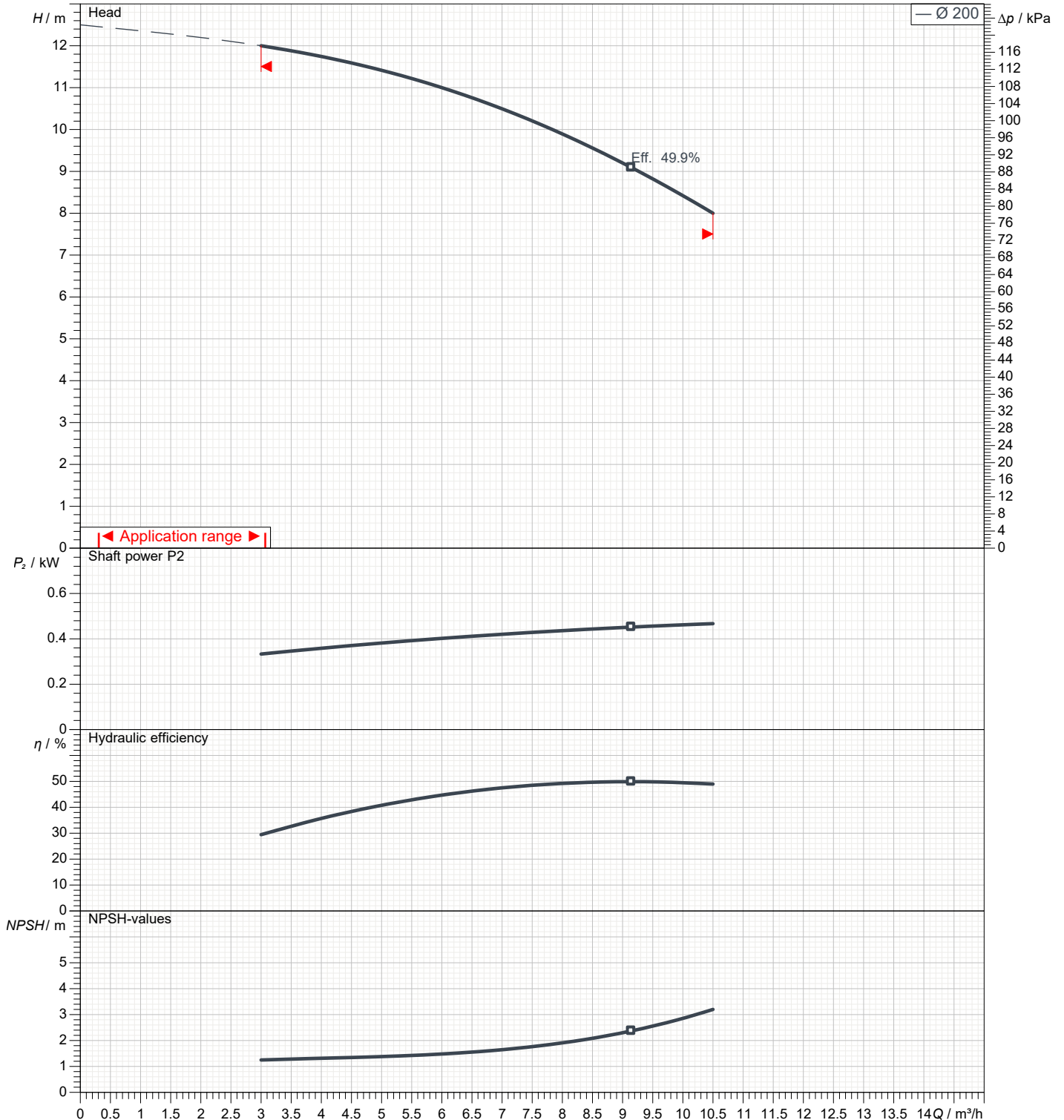
|   |               |      |  |
|---|---------------|------|--|
| 1 | Flow          | m³/h |  |
| 2 | Head          | m    |  |
| 3 | Geodetic head | m    |  |

## Pump

|                            |      |     |                 |     |      |
|----------------------------|------|-----|-----------------|-----|------|
| Operating flow             | m³/h |     | Frequency       | Hz  | 50   |
| Operating head             | m    |     | Number of poles |     | 4    |
| Impeller diameter designed | mm   | 200 | Speed           | rpm | 1400 |

Test standard: ISO 9906:2012 - Grade3B

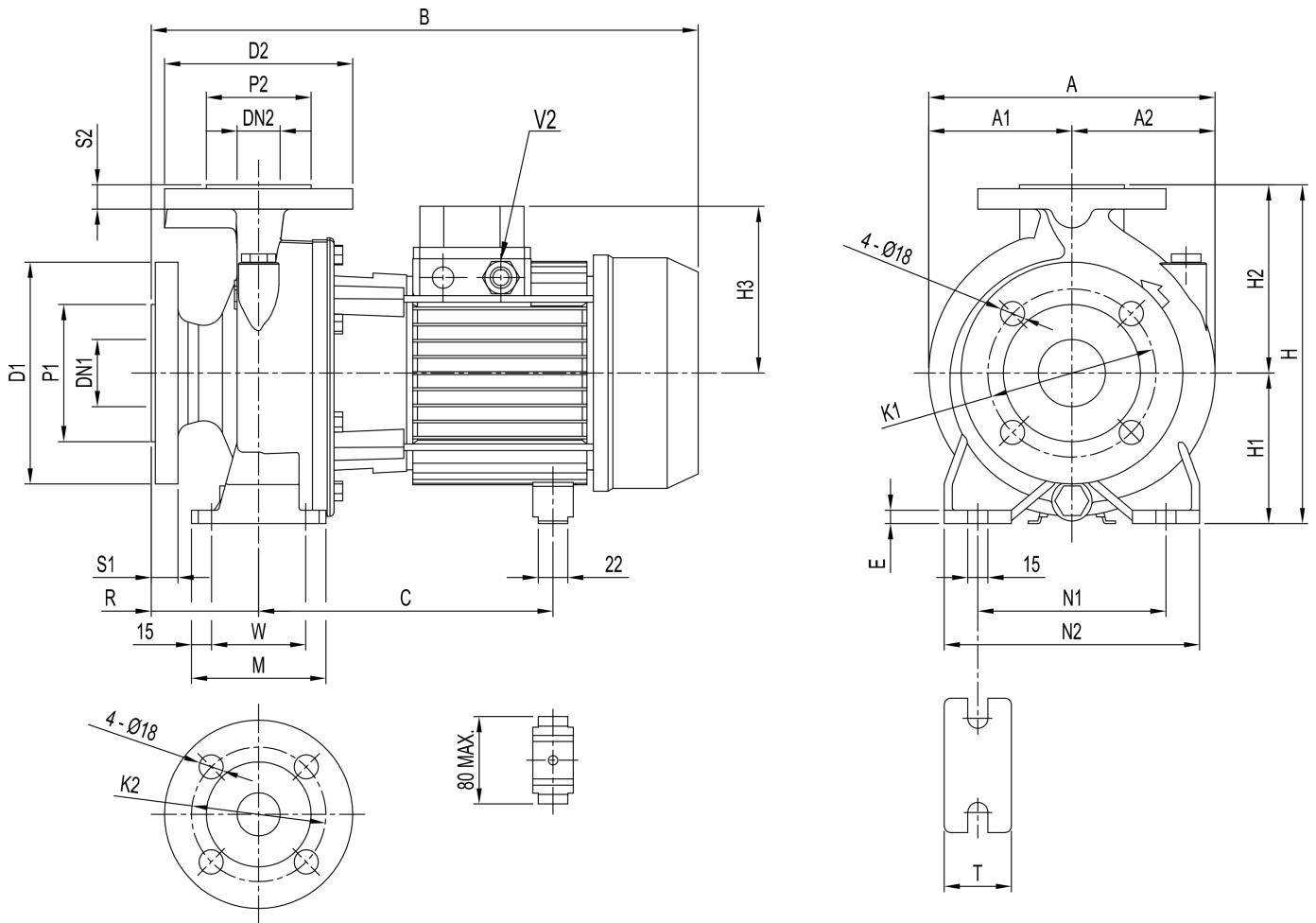
Water; 20°C; 998.3kg/m³; 1cSt



# Dimensions

Pump Name 3D4 32-200/0.55

|          |                 |           |
|----------|-----------------|-----------|
| Customer | Date 09.06.2024 | Company   |
| Contact  | Item no.        | Issued by |
| Phone    | Project         | Phone     |
| E-mail   | Project ID      | E-mail    |



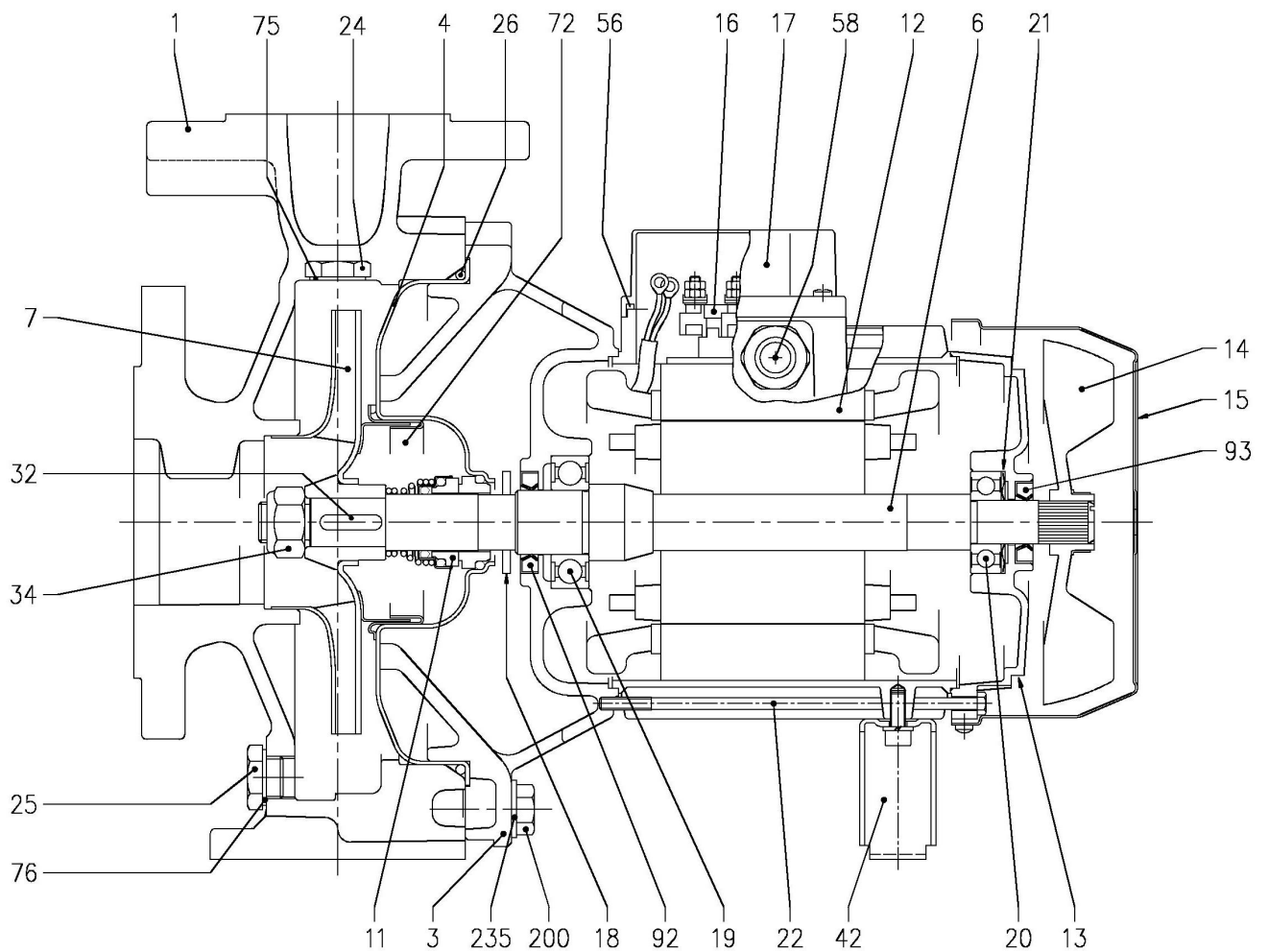
| Dimensions in |         | mm  |            |         |  |  |  |  |
|---------------|---------|-----|------------|---------|--|--|--|--|
| 1             | A       | 296 | M          | 100     |  |  |  |  |
| 2             | A1      | 148 | N1         | 190     |  |  |  |  |
| 3             | A2      | 148 | N2         | 240     |  |  |  |  |
| 4             | Dia D1  | 165 | R          | 80      |  |  |  |  |
| 5             | Dia D2  | 140 | S1         | 20      |  |  |  |  |
| 6             | Dia DN1 | 50  | S2         | 18      |  |  |  |  |
| 7             | Dia DN2 | 32  | T          | 50      |  |  |  |  |
| 8             | Dia K1  | 125 | W          | 70      |  |  |  |  |
| 9             | Dia K2  | 100 | Weight P&M | 35.9 kg |  |  |  |  |
| 10            | Dia P1  | 102 |            |         |  |  |  |  |
| 11            | Dia P2  | 78  |            |         |  |  |  |  |
| 12            | E       | 10  |            |         |  |  |  |  |
| 13            | H       | 340 |            |         |  |  |  |  |
| 14            | H1      | 160 |            |         |  |  |  |  |
| 15            | H2      | 180 |            |         |  |  |  |  |

(1/3)

# Construction

Pump Name 3D4 32-200/0.55

|          |                 |           |
|----------|-----------------|-----------|
| Customer | Date 09.06.2024 | Company   |
| Contact  | Item no.        | Issued by |
| Phone    | Project         | Phone     |
| E-mail   | Project ID      | E-mail    |



**(2/3)****Construction****Pump Name 3D4 32-200/0.55**

|          |            |            |           |
|----------|------------|------------|-----------|
| Customer | Date       | 09.06.2024 | Company   |
| Contact  | Item no.   |            | Issued by |
| Phone    | Project    |            | Phone     |
| E-mail   | Project ID |            | E-mail    |

| N°             | PART NAME                        |  | MATERIAL                               | DIMENSIONS  | STANDARD                   | Q.TY |
|----------------|----------------------------------|--|--|-------------|----------------------------|------|
| 001            | Casing                           |  | Cast iron EN-GJL-250-EN 1561           |             |                            | 1    |
| 003            | Motor bracket                    |  | [1]                                    |             |                            | 1    |
| 004            | Casing cover                     |  | EN 1.4301 (AISI 304)                   |             |                            | 1    |
| 006            | Shaft with rotor - Wet extension |  | EN 1.4301 (AISI 304)                   |             |                            | 1    |
| 007            | Impeller                         |  | [2]                                    |             |                            | 1    |
| 011            | Mechanical seal                  |  | [3]                                    | [3]         |                            | 1    |
| 012            | Motor frame with stator          |  | -                                      |             |                            | 1    |
| 013            | Motor cover                      |  | Aluminium                              |             |                            | 1    |
| 014            | Fan                              |  | PA                                     |             |                            | 1    |
| 015            | Fan cover                        |  | Fe P04 Galvanized                      |             |                            | 1    |
| 016            | Terminal                         |  | -                                      |             |                            | 1    |
| 017            | Terminal box cover               |  | Aluminium (three phase version)        |             |                            | 1    |
| 018            | Splash ring                      |  | NBR                                    | 40x21.5x2   | EBARA DRAWING              | 1    |
| 019            | Bearing                          |  | -                                      |             |                            | 1    |
| 020            | Bearing                          |  | -                                      |             |                            | 1    |
| 021            | Adjusting ring                   |  | Steel C70                              |             |                            | 1    |
| 022            | Tie rod                          |  | Fe 42 Galvanized                       | M5          | EBARA DRAWING              | 4    |
| 24             | Priming plug                     |  | Brass                                  | G 3/8" L=8  |                            | 1    |
| 25             | Draing plug                      |  | Brass                                  | G 3/8" L=8  |                            | 1    |
| 026            | "O" ring                         | 32-125, 40-125                                 | NBR [4]                                | 158.11x5.34 | OR 6625                    | 1    |
|                |                                  | 32-160, 40-160, 50-125, 65-125                 |  | 183.52x5.34 | OR 6720                    |      |
|                |                                  | 32-200, 40-200, 50-160, 50-200, 65-160, 65-200 |  | 227.96x5.34 | OR 6895                    |      |
|                |                                  |  |  |             |                            |      |
| 032            | Key                              |  | EN 1.4401 (AISI 316)                   | A 6x6x25    | UNI 6604                   | 1    |
| 034            | Impeller nut                     | Other models                                   | EN 1.4301 (AISI 304)                   | M16x1.5     | UNI 7474                   | 1    |
|                |                                  | 50-200/2.2                                     |  | M18x1.5     |                            |      |
| 042            | Foot                             |  | Aluminium / Galvanized steel           |             | EBARA DRAWING              | 1    |
| 056            | Box gasket                       |  | NBR                                    |             |                            | 1    |
| 058            | Cable gland                      |  | -                                      |             |                            | 1    |
| 072            | Casing ring [5]                  |  | EN 1.4301 (AISI 304)                   |             |                            | 1    |
| 075            | Washer                           |  | Aluminum                               | 22x17x1.5   | EBARA DRAWING              | 1    |
| 076            | Washer                           |  | Aluminum                               |             |                            |      |
| 092            | Lip seal                         | Up to 1.5 kW                                   | -                                      | 25x40x7     | DIN 3760<br>without spring | 1    |
|                |                                  | From 2.2 to 3 kW                               |  | 30x47x7     |                            |      |
| 093            | Lip seal                         | For 0.25 kW                                    | -                                      | 15x30x5     | DIN 3760<br>without spring | 1    |
|                |                                  | For 0.37 kW and 0.55 kW                        |  | 17x32x7     |                            |      |
|                |                                  | From 0.75 kW to 3 kW                           |  | 25x40x7     |                            |      |
| 200            | Screw                            | 32-125   | Gv. Steel 8.8 strenght class ISO 898-1 | M 8x30      | UNI 5739                   | 8    |
|                |                                  | 40-125   |  |             |                            |      |
|                |                                  | 32-160   |  | M 10x35     |                            | 10   |
|                |                                  | 40-160   |  |             |                            |      |
|                |                                  | 50-125   |  |             |                            |      |
|                |                                  | 65-125   |  |             |                            |      |
| 32-200, 40-200 | 12                               |  |  |             |                            |      |
| 50-160, 50-200 |                                  |  |  |             |                            |      |
| 65-160, 65-200 |                                  |  |  |             |                            |      |
| 235            | Washer                           | 32-125   | Galvanized Steel                       | 8.4x17      | UNI 6592                   | 8    |
|                |                                  | 40-125   |  |             |                            |      |
|                |                                  | 32-160   |  | 10.5x21     |                            | 10   |
|                |                                  | 40-160   |  |             |                            |      |
|                |                                  | 50-125   |  |             |                            |      |
|                |                                  | 65-125   |  |             |                            |      |
| 32-200, 40-200 | 12                               |  |  |             |                            |      |
| 50-160, 50-200 |                                  |  |  |             |                            |      |
| 65-160, 65-200 |                                  |  |  |             |                            |      |

[1] Aluminum AL-EN-1706-AC-46000-D for 3D4 50-200/2.2; 65-125/0.75 and 1.1; 65-160/2.2; 65-200/2.2 and 3 kW

Cast iron EN-GJL-200-EN 1561 for all the others;

[2] EN 1.4301 (AISI 304) for 32, 40, 50 series; EN 1.4401 (AISI 316) for 65 series

[3] For special version and dimensions see **CONSTRUCTION 3**

[4] FPM for H, HS, HW, HSW version; EPDM for E version

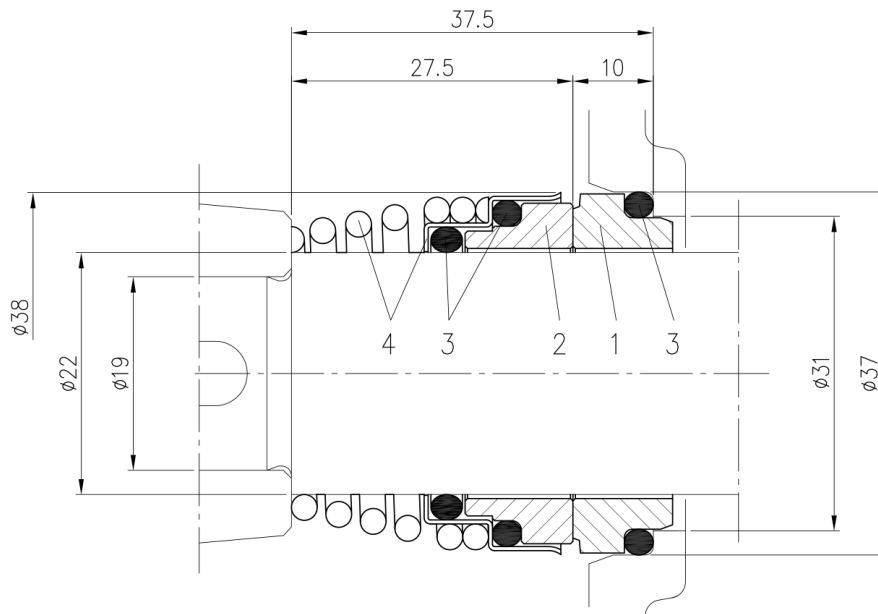
[5] Only for: 32-200, 40-200, 50-160, 50-200

(3/3)

# Construction

Pump Name 3D4 32-200/0.55

|          |                 |           |
|----------|-----------------|-----------|
| Customer | Date 09.06.2024 | Company   |
| Contact  | Item no.        | Issued by |
| Phone    | Project         | Phone     |
| E-mail   | Project ID      | E-mail    |



| Version  | Material                     |                          |             |                         |
|----------|------------------------------|--------------------------|-------------|-------------------------|
|          | 1<br>Stationary<br>seal ring | 2<br>Rotary<br>seal ring | 3<br>Rubber | 4<br>Frame +<br>Spring  |
| Standard | Carbon                       | Ceramic                  | NBR         | EN 1.4401<br>(AISI 316) |