

Technical Data

Pump Name

3D4 40-200/1.5

| | | | |
|----------|------------|------------|-----------|
| Customer | Date | 09.06.2024 | Company |
| Contact | Item no. | | Issued by |
| Phone | Project | | Phone |
| E-mail | Project ID | | E-mail |

Requested data

| | | | | |
|---|---------------------------|-------------------|--------------------|-------------|
| 1 | Pump type | CENTRIFUGAL PUMPS | Fluid | Water |
| 2 | Number of pumps / Reserve | 1 / 0 | Liquid temperature | °C 20 |
| 3 | Flow m³/h | | Kin. viscosity | cSt 1.005 |
| 4 | Head m | | Vapour pressure | kPa 2.34 |
| 5 | Geodetic head m | | PH value | |
| 6 | Inlet pressure (pin) kPa | 0 | Density | kg/m³ 998.3 |
| 7 | Available system NPSH | | Solids | Weight % 0 |
| 8 | Ambient temperature °C | 20 | | |

Pump

| | | | | |
|----|---------------------------|--------------------------------|-----------------------------------|------------------|
| 9 | Pump Name | 3D4 40-200/1.5 | Frequency | Hz 50 |
| 10 | Design | CENTRIFUGAL PUMPS | Installation type | STANDARD |
| 11 | Manufacturer | EBARA | Impeller Diameter | Max. mm 224 |
| 12 | Speed rpm | 1400 | | Designed mm 224 |
| 13 | No. of Stage | 1 | | Min. mm 224 |
| 14 | Connection Suction side | EN 1092-2 | Flow | Operating m³/h |
| 15 | Connection Discharge side | EN 1092-2 | | Max- m³/h 21 |
| 16 | Max Working Pressure kPa | 1000 | | Min- m³/h 6 |
| 17 | Shut-off head kPa | 176.29 | Head | Operating m |
| 18 | Total weight kg | See the table of "Dimensions". | | - (Qmax.) m 14.2 |
| 19 | Shaft power kW | | | - (Qmin.) m 17.7 |
| 20 | | | Max. Shaft Power at max. impeller | kW 1.20 |
| 21 | Required pump NPSH m | | Efficiency | % |

Materials

| | | | |
|----|----------|-----------|--|
| 22 | Casing | Cast iron | |
| 23 | Impeller | AISI 304 | |
| 24 | Shaft | AISI 304 | |
| 25 | | | |
| 26 | | | |
| 27 | | | |

Motor

| | | | | |
|----|----------------------|------------------------------------|------------------|-------|
| 28 | Manufacturer | EPE Standard | Insulation class | F |
| 29 | Type | TEFC_3D440-200/1.5_230_Three Phase | Phases | 3~ |
| 30 | Specific design | IE2 / 50 Hz / Pole pairs 2 | Frame size | |
| 31 | Rated power kW | 1.5 | Weight | kg |
| 32 | Number of poles | 4 | Electric voltage | V 230 |
| 33 | Speed rpm | 1400 | Electric current | A 6.2 |
| 34 | Degree of protection | IP 55 | | |
| 35 | | | | |

Remarks

Performance Curve

Pump Name

3D4 40-200/1.5

| | | |
|----------|-----------------|-----------|
| Customer | Date 09.06.2024 | Company |
| Contact | Item no. | Issued by |
| Phone | Project | Phone |
| E-mail | Project ID | E-mail |

Requested data

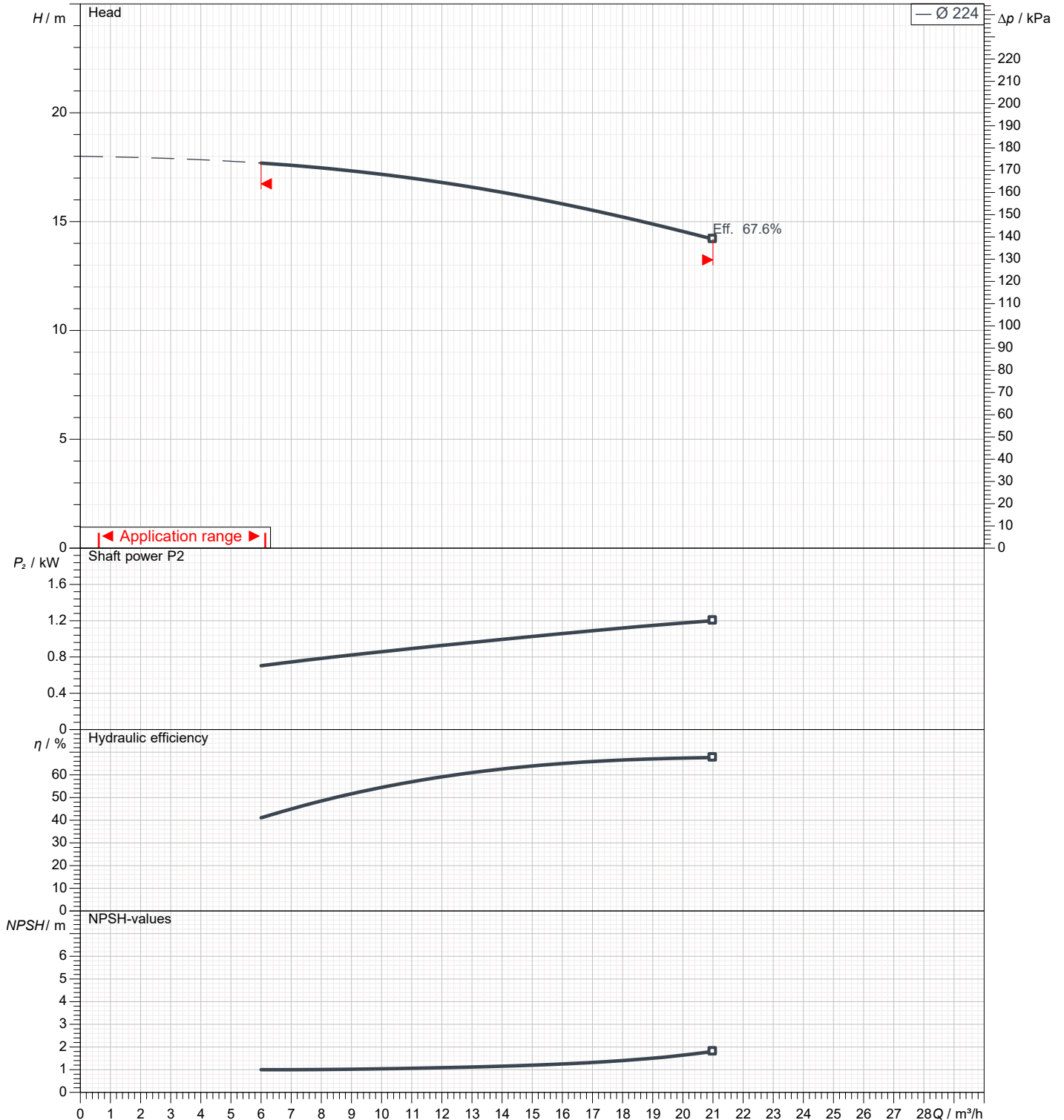
| | | | |
|---|---------------|------|--|
| 1 | Flow | m³/h | |
| 2 | Head | m | |
| 3 | Geodetic head | m | |

Pump

| | | | | | |
|----------------------------|------|-----------------|-------|-----|------|
| Operating flow | m³/h | Frequency | Hz | 50 | |
| Operating head | m | Number of poles | | 4 | |
| Impeller diameter designed | mm | 224 | Speed | rpm | 1400 |

Test standard: ISO 9906:2012 - Grade3B

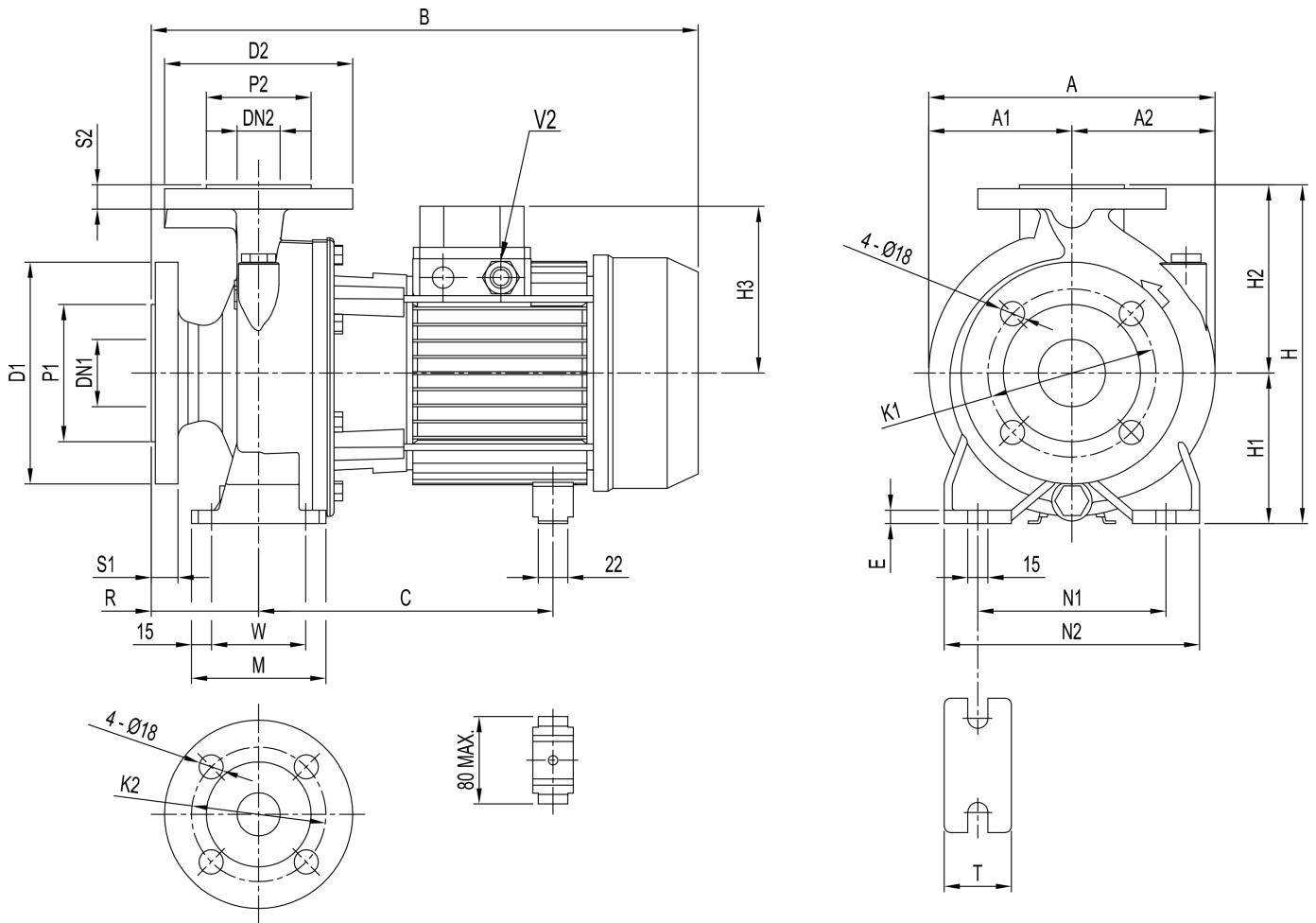
Water; 20°C; 998.3kg/m³; 1cSt



Dimensions

Pump Name 3D4 40-200/1.5

| | | |
|----------|-----------------|-----------|
| Customer | Date 09.06.2024 | Company |
| Contact | Item no. | Issued by |
| Phone | Project | Phone |
| E-mail | Project ID | E-mail |



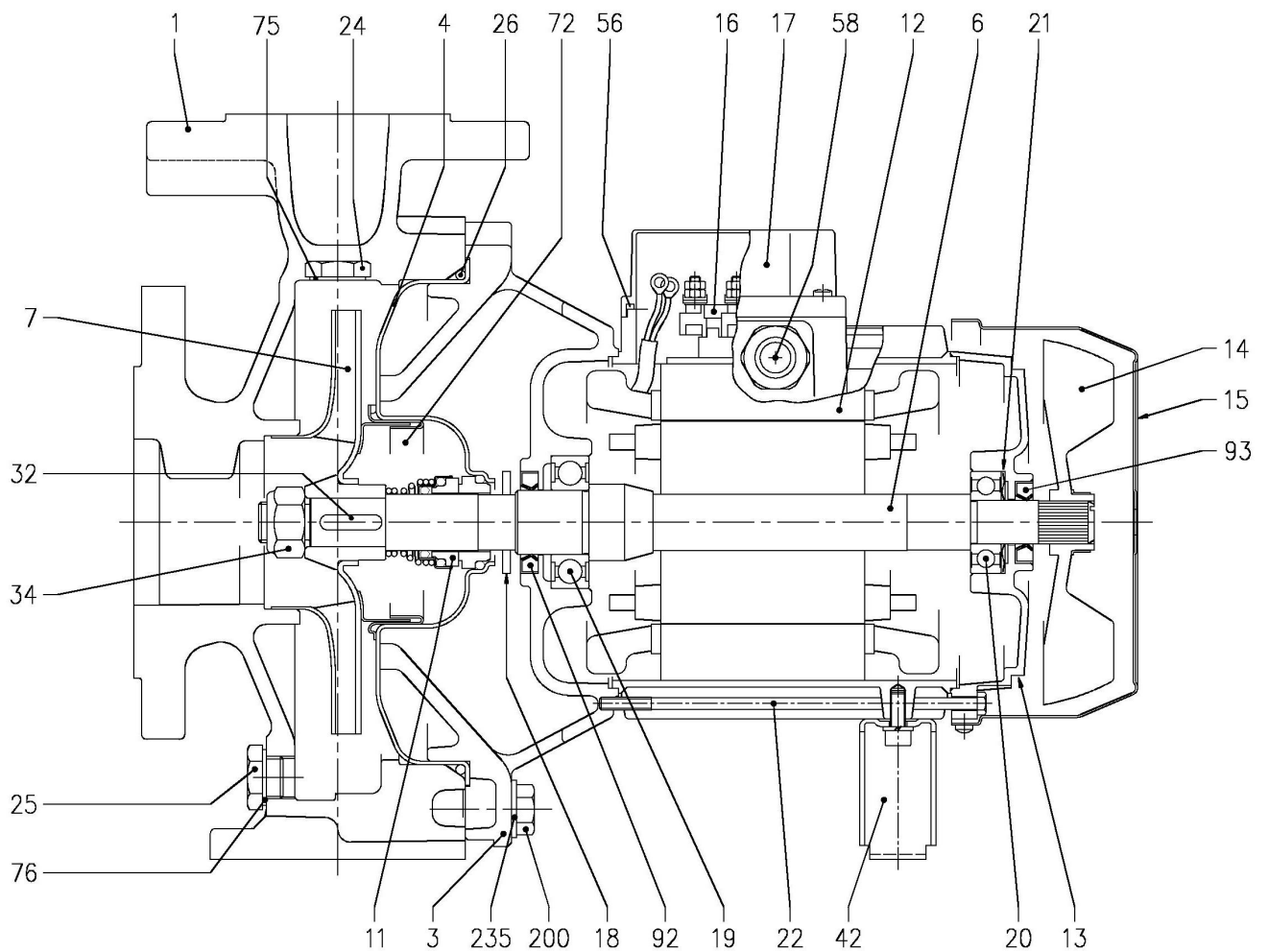
| Dimensions in | | mm | | |
|---------------|---------|-----|------------|-------|
| 1 | A | 296 | M | 100 |
| 2 | A1 | 148 | N1 | 212 |
| 3 | A2 | 148 | N2 | 265 |
| 4 | Dia D1 | 185 | R | 100 |
| 5 | Dia D2 | 150 | S1 | 20 |
| 6 | Dia DN1 | 65 | S2 | 18 |
| 7 | Dia DN2 | 40 | T | 50 |
| 8 | Dia K1 | 145 | W | 70 |
| 9 | Dia K2 | 110 | Weight P&M | 43 kg |
| 10 | Dia P1 | 122 | | |
| 11 | Dia P2 | 88 | | |
| 12 | E | 12 | | |
| 13 | H | 340 | | |
| 14 | H1 | 160 | | |
| 15 | H2 | 180 | | |

(1/3)

Construction

Pump Name 3D4 40-200/1.5

| | | |
|----------|-----------------|-----------|
| Customer | Date 09.06.2024 | Company |
| Contact | Item no. | Issued by |
| Phone | Project | Phone |
| E-mail | Project ID | E-mail |



(2/3)

Construction

Pump Name 3D4 40-200/1.5

| | | |
|----------|-----------------|-----------|
| Customer | Date 09.06.2024 | Company |
| Contact | Item no. | Issued by |
| Phone | Project | Phone |
| E-mail | Project ID | E-mail |

| N° | PART NAME | MATERIAL | DIMENSIONS | STANDARD | Q.TY | |
|---------|----------------------------------|--|---|--------------------|----------------------------|--------|
| 001 | Casing | Cast iron EN-GJL-250-EN 1561 | | | 1 | |
| 003 | Motor bracket | [1] | | | 1 | |
| 004 | Casing cover | EN 1.4301 (AISI 304) | | | 1 | |
| 006 | Shaft with rotor - Wet extension | EN 1.4301 (AISI 304) | | | 1 | |
| 007 | Impeller | [2] | | | 1 | |
| 011 | Mechanical seal | [3] | [3] | | 1 | |
| 012 | Motor frame with stator | - | | | 1 | |
| 013 | Motor cover | Aluminium | | | 1 | |
| 014 | Fan | PA | | | 1 | |
| 015 | Fan cover | Fe P04 Galvanized | | | 1 | |
| 016 | Terminal | - | | | 1 | |
| 017 | Terminal box cover | Aluminium (three phase version) | | | 1 | |
| 018 | Splash ring | NBR | 40x21.5x2 | EBARA DRAWING | 1 | |
| 019 | Bearing | - | | | 1 | |
| 020 | Bearing | - | | | 1 | |
| 021 | Adjusting ring | Steel C70 | | | 1 | |
| 022 | Tie rod | Fe 42 Galvanized | M5 | EBARA DRAWING | 4 | |
| 24 | Priming plug | Brass | G 3/8" L=8 | | 1 | |
| 25 | Draing plug | Brass | G 3/8" L=8 | | 1 | |
| 026 | "O" ring | NBR [4] | 32-125, 40-125 | 158.11x5.34 | OR 6625 | 1 |
| | | | 32-160, 40-160, 50-125, 65-125 | 183.52x5.34 | OR 6720 | |
| | | | 32-200, 40-200,50-160, 50-200, 65-160, 65-200 | 227.96x5.34 | OR 6895 | |
| 032 | Key | EN 1.4401 (AISI 316) | A 6x6x25 | UNI 6604 | 1 | |
| 034 | Impeller nut | Other models 50-200/2.2 | EN 1.4301 (AISI 304) | M16x1.5 | UNI 7474 | 1 |
| | | | | M18x1.5 | | |
| 042 | Foot | Aluminium / Galvanized steel | | EBARA DRAWING | 1 | |
| 056 | Box gasket | NBR | | | 1 | |
| 058 | Cable gland | - | | | 1 | |
| 072 | Casing ring [5] | EN 1.4301 (AISI 304) | | | 1 | |
| 075 | Washer | Aluminum | 22x17x1.5 | EBARA DRAWING | 1 | |
| 076 | Washer | Aluminum | | | 1 | |
| 092 | Lip seal | Up to 1.5 kW For 2.2 to 3 kW | - | 25x40x7 30x47X7 | DIN 3760 without spring | 1 |
| | | | | | | |
| 093 | Lip seal | For 0.25 kW For 0.37 kW and 0.55 kW From 0.75 kW to 3 kW | - | 15x30x5 | DIN 3760 without spring | 1 |
| | | | | 17x32x7 25x40x7 | | |
| 200 | Screw | Gv. Steel 8.8 strenght class ISO 898-1 | | M 8x30 | UNI 5739 | 8 |
| | | | | M 10x35 | | 10 |
| | | | | | | 12 |
| | | | | | | |
| | | | | 235 | | Washer |
| 10.5x21 | 10 | | | | | |
| | 12 | | | | | |
| | | | | | | |

[1] Aluminum AL-EN-1706-AC-46000-D for 3D4 50-200/2.2; 65-125/0.75 and 1.1; 65-160/2.2; 65-200/2.2 and 3 kW

Cast iron EN-GJL-200-EN 1561 for all the others;

[2] EN 1.4301 (AISI 304) for 32, 40, 50 series; EN 1.4401 (AISI 316) for 65 series

[3] For special version and dimensions see **CONSTRUCTION 3**

[4] FPM for H, HS, HW, HSW version; EPDM for E version

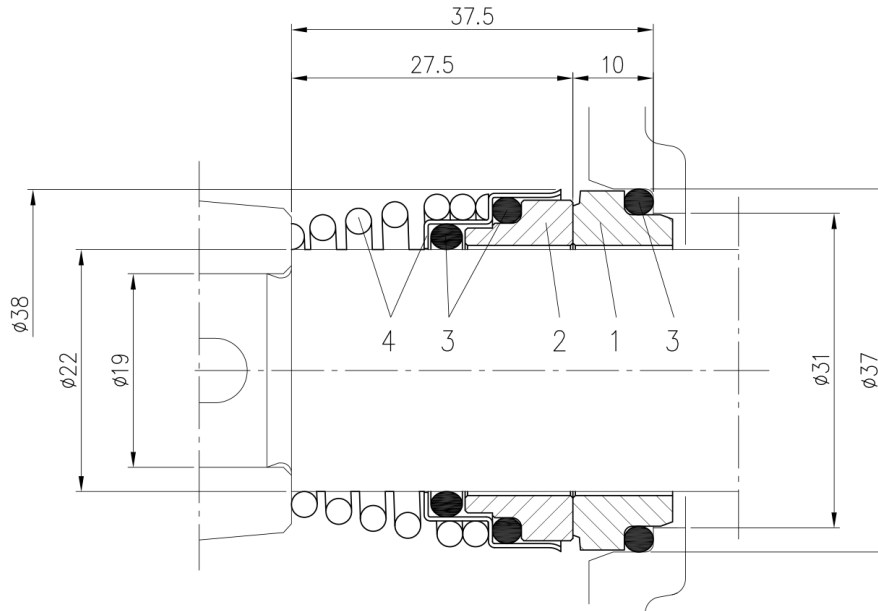
[5] Only for: 32-200, 40-200, 50-160, 50-200

(3/3)

Construction

Pump Name 3D4 40-200/1.5

| | | |
|----------|-----------------|-----------|
| Customer | Date 09.06.2024 | Company |
| Contact | Item no. | Issued by |
| Phone | Project | Phone |
| E-mail | Project ID | E-mail |



| Version | Material | | | |
|----------|------------------------------|--------------------------|-------------|-------------------------|
| | 1 Stationary seal ring | 2 Rotary seal ring | 3 Rubber | 4 Frame + Spring |
| Standard | Carbon | Ceramic | NBR | EN 1.4401 (AISI 316) |