

# Technical Data

Pump Name

3LM4 80-160/1.5

Customer	Date	09.06.2024	Company
Contact	Item no.		Issued by
Phone	Project		Phone
E-mail	Project ID		E-mail

## Requested data

1	Pump type	CENTRIFUGAL PUMPS	Fluid	Water
2	Number of pumps / Reserve	1 / 0	Liquid temperature	°C 20
3	Flow m³/h		Kin. viscosity	cSt 1.005
4	Head m		Vapour pressure	kPa 2.34
5	Geodetic head m		PH value	
6	Inlet pressure (pin) kPa	0	Density	kg/m³ 998.3
7	Available system NPSH		Solids	Weight % 0
8	Ambient temperature °C	20		

## Pump

9	Pump Name	3LM4 80-160/1.5	Frequency	Hz 50
10	Design	CENTRIFUGAL PUMPS	Installation type	STANDARD
11	Manufacturer	EBARA	Impeller Diameter	Max. mm 156
12	Speed rpm	1400		Designed mm 156
13	No. of Stage	1		Min. mm 156
14	Connection Suction side	DIN 2532	Flow	Operating m³/h
15	Connection Discharge side	DIN 2532		Max- m³/h 108
16	Max Working Pressure kPa	1000		Min- m³/h 36
17	Shut-off head kPa	71.49	Head	Operating m
18	Total weight kg	See the table of "Dimensions".		- (Qmax.) m 2.4
19	Shaft power kW			- (Qmin.) m 6.8
20			Max. Shaft Power at max. impeller	kW 1.24
21	Required pump NPSH m		Efficiency	%

## Materials

22	Impeller	AISI 316	
23	Casing	AISI 316	
24	Shaft	AISI 316L	
25			
26			
27			

## Motor

28	Manufacturer	EPE Standard	Insulation class	F
29	Type	TEFC_3LM480-160/1.5_230_Three Phase	Phases	3~
30	Specific design	IE3 / 50 Hz / Pole pairs 2	Frame size	90
31	Rated power kW	1.5	Weight	kg
32	Number of poles	4	Electric voltage	V 230
33	Speed rpm	1400	Electric current	A 3.6
34	Degree of protection	IP 55		
35				

## Remarks

# Performance Curve

Pump Name

3LM4 80-160/1.5

Customer	Date 09.06.2024	Company
Contact	Item no.	Issued by
Phone	Project	Phone
E-mail	Project ID	E-mail

## Requested data

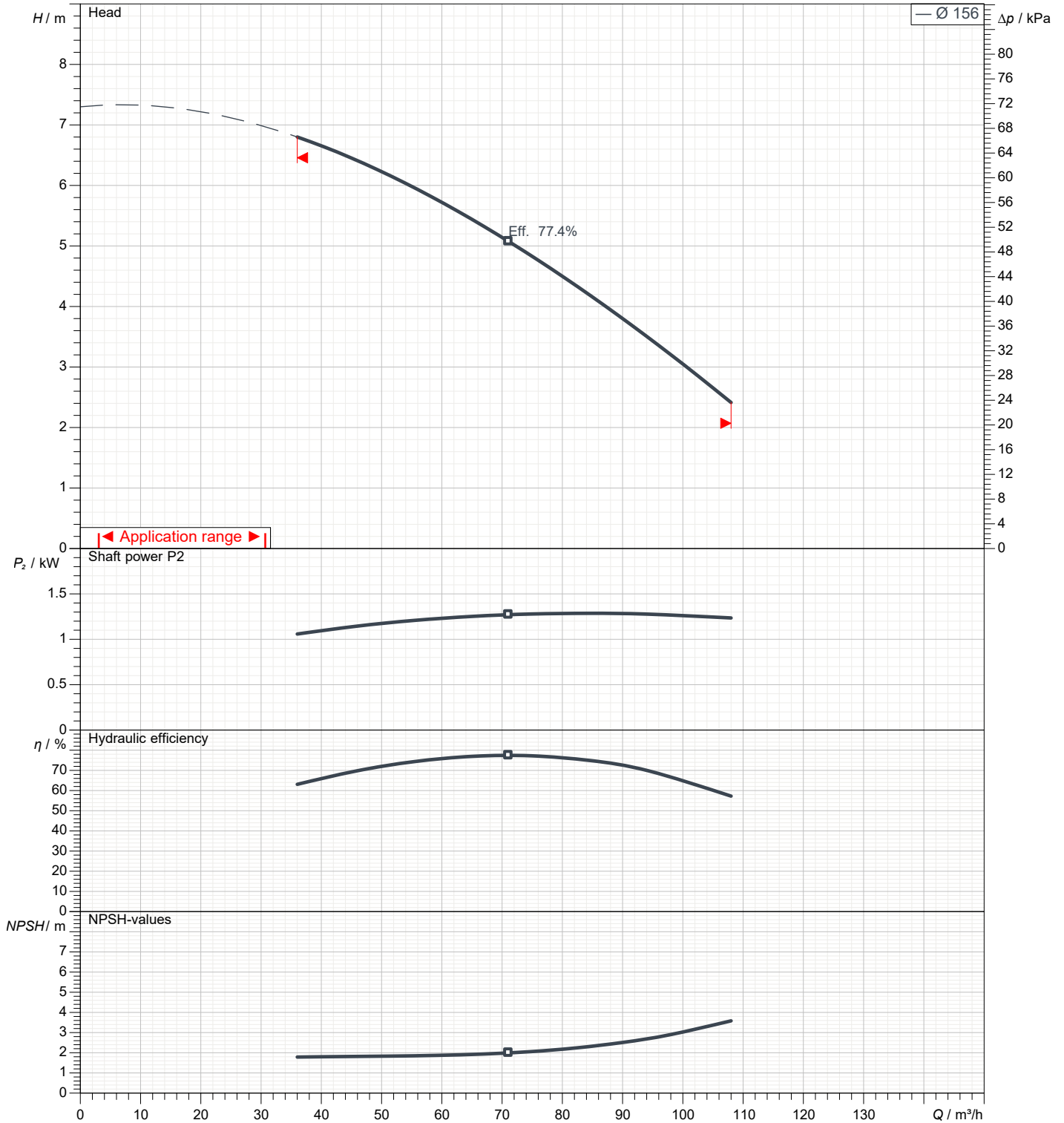
1	Flow	m³/h	
2	Head	m	
3	Geodetic head	m	

## Pump

Operating flow	m³/h	Frequency	Hz	50	
Operating head	m	Number of poles	4		
Impeller diameter designed	mm	156	Speed	rpm	1400

Test standard: ISO 9906:2012 - Grade3B

Water; 20°C; 998.3kg/m³; 1cSt



# Dimensions

Pump Name 3LM4 80-160/1.5

Customer	Date 09.06.2024	Company
Contact	Item no.	Issued by
Phone	Project	Phone
E-mail	Project ID	E-mail

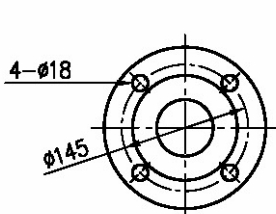
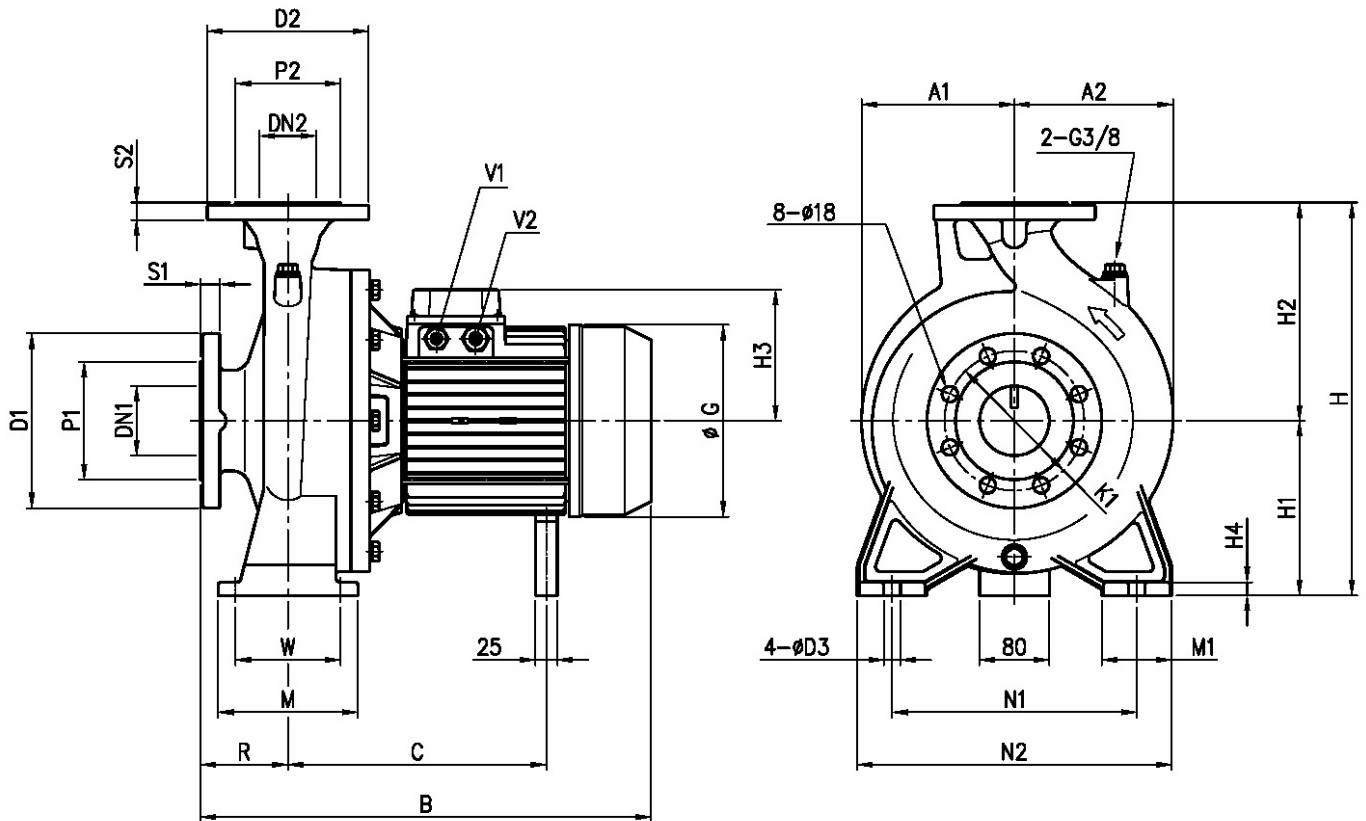


Fig. 1

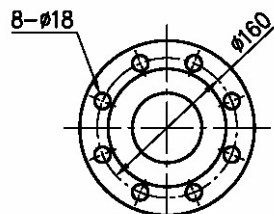


Fig. 2

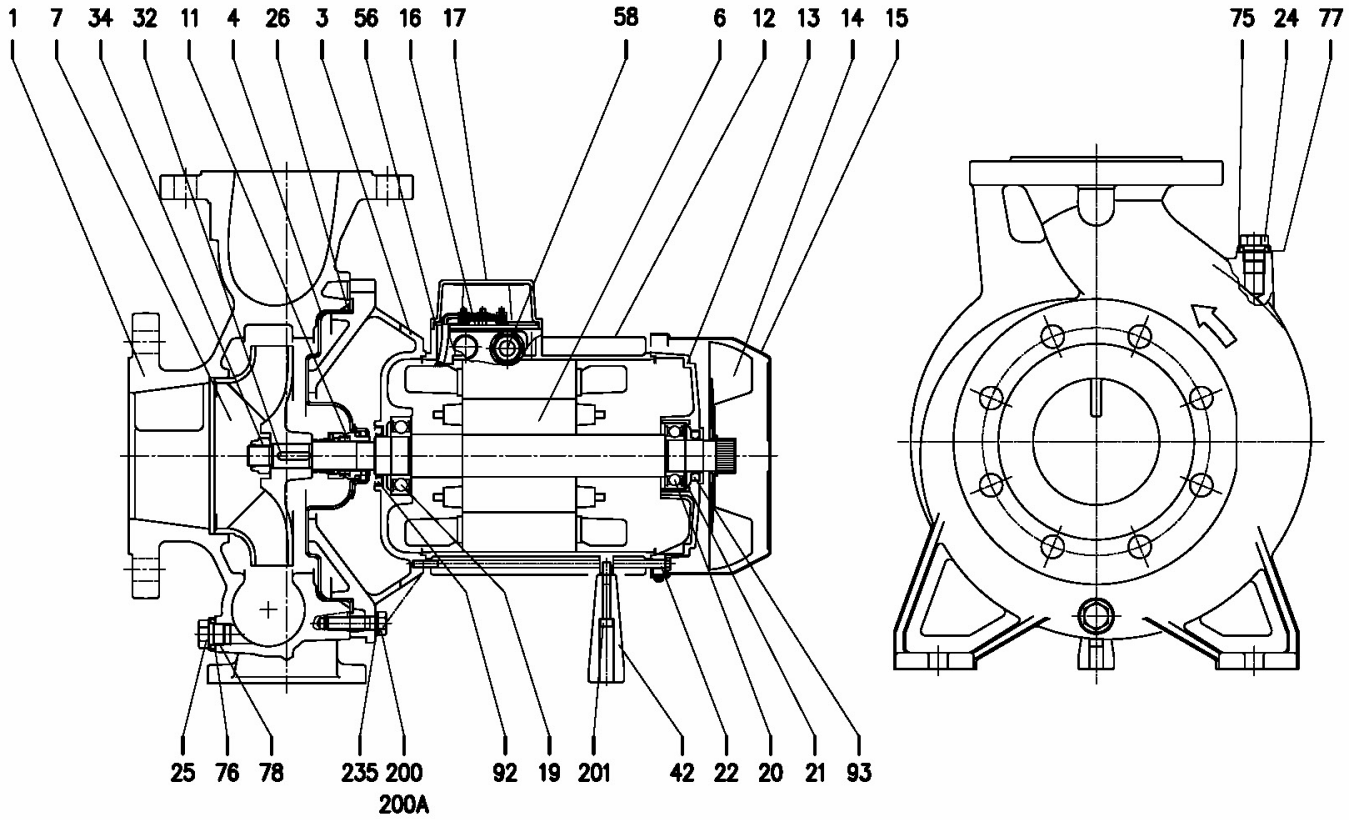
Dimensions in		mm		
1	A1	147	H2	225
2	A2	173	H3	124
3	B	516	H4	13
4	C	499	M	125
5	D3	15	M1	65
6	Dia D1	225	N1	250
7	Dia D2	200	N2	320
8	Dia DN1	100	R	125
9	Dia DN2	80 Fig. 2	S1	24
10	Dia K1	180	S2	22
11	Dia P1	155	V2	PG 13,5
12	Dia P2	135	W	95
13	G	176	Weight P&M	53 kg
14	H	405		
15	H1	180		

(1/3)

# Construction

Pump Name 3LM4 80-160/1.5

Customer	Date 09.06.2024	Company
Contact	Item no.	Issued by
Phone	Project	Phone
E-mail	Project ID	E-mail



**(2/3)****Construction****Pump Name 3LM4 80-160/1.5**

Customer	Date 09.06.2024	Company
Contact	Item no.	Issued by
Phone	Project	Phone
E-mail	Project ID	E-mail

N°	PART NAME	MATERIAL	DIMENSIONS	STANDARD	Q.TY
1	Casing	EN 1.4401 (AISI 316)			1
3	Motor bracket	Cast iron EN-GJL-200-EN 1561			1
4	Casing cover	EN 1.4404 (AISI 316L)			1
6	Shaft with rotor	EN 1.4404(AISI 316L) -Part in contact with liquid			1
7	Impeller	EN 1.4401 (AISI 316)			1
11	Mechanical seal [1]	SiC/SiC/FPM			1
12	Motor frame with stator	-			1
13	Motor cover	Aluminium			1
14	Fan	PA			1
15	Fan cover	Fe P04 Galvanized			1
16	Terminal	-			1
17	Terminal box cover	Aluminium			1
19	Bearing	-			1
20	Bearing	-			1
21	Adjusting ring	Steel C70			1
22	Tie rod	Fe 42 Galvanized			4
24	Plug	EN 1.4404 (AISI 316L)	G 3/8	EPE DRAWING	1
25	Plug	EN 1.4404 (AISI 316L)	G 3/8	EPE DRAWING	1
26	O ring	FPM [2]	227.96x5.34	OR 6895	1
32	Key	EN 1.4404 (AISI 316L)	6x6x25	UNI 6604	1
34	Impeller nut	EN 1.4404 (AISI 316L)	M16x1.5	UNI 7474	1
42	Foot	Aluminium		EPE DRAWING	1
56	Box gasket	NBR			1
58	Fasting nut	-			1
75	Washer (plug)	EN 1.4404 (AISI 316L)			1
76	Washer (plug)				1
77	O-ring (plug)	FPM [2]			1
78	O-ring (plug)				1
92	O ring	-	25x40x7	DIN 3760 without spring	1
	1.5 kW		30x47x7		1
93	O ring	-	25x40x7		1
200	Screw	Stainless steel A2-70 class ISO 3506/1	M 10x35	UNI 5739	10
200A	Screw		M 10x30		2
201	Screw	Stainless steel A2-70 class ISO 3506/1	M 6x40	UNI 5739	1
	1.5 kW		M 12x40		4
235	Washer	EN 1.4301 (AISI 304)	10.5	UNI 6592	12

[1] Special version: see CONSTRUCTION 3

[2] FPM for H-HW-HSW version

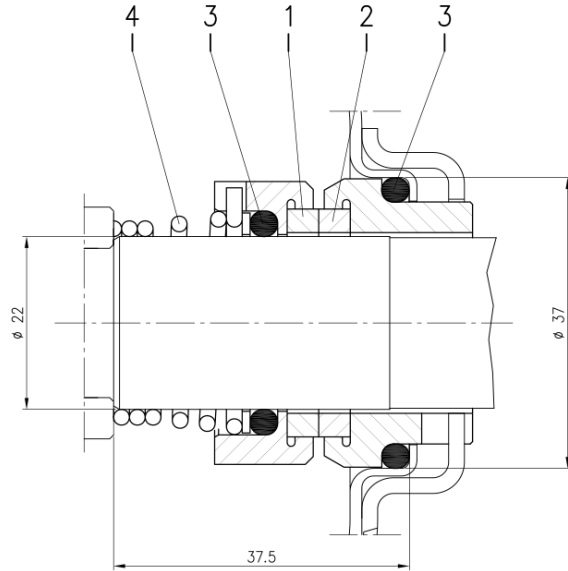
EPDM for E version, Q1AEGG, U3U3EGG, Q1Q1EGG, Q1U3EGG, U3CEGG

(3/3)

# Construction

Pump Name 3LM4 80-160/1.5

Customer	Date 09.06.2024	Company
Contact	Item no.	Issued by
Phone	Project	Phone
E-mail	Project ID	E-mail



Version	Pump type	Material			
		1 Stationary seal ring	2 Rotary seal ring	3 Rubber	4 Frame + spring
L $\varnothing 22$	32-125/160/200 40-125/160/200 50-125/160/200 65-125/160/200 80-160	SiC	SiC	FPM	EN 1.4571 (AISI 316Ti)