

# Technical Data

Pump Name

3LM 65-160/116

Customer	Date	2024-06-20	Company
Contact	Item no.		Issued by
Phone	Project		Phone
E-mail	Project ID	Proiect redenumit 2024-06-20 10:03:09	E-mail

## Requested data

1	Pump type	CENTRIFUGAL PUMPS	Fluid	Water
2	Number of pumps / Reserve	1 / 0	Liquid temperature	°C 20
3	Flow m³/h		Kin. viscosity	mm²/s 1.005
4	Head m		Vapour pressure	bar 0.0234
5	Geodetic head m		PH value	
6	Inlet pressure (pin) bar	0	Density	kg/m³ 998.3
7	Available system NPSH		Solids	Weight % 0
8	Ambient temperature °C	20		

## Pump

9	Pump Name	3LM 65-160/116	Frequency	Hz 60
10	Design	CENTRIFUGAL PUMPS	Installation type	STANDARD
11	Manufacturer	EBARA	Impeller Diameter	Max. mm 146
12	Speed rpm	3480		Designed mm 146
13	No. of Stage	1		Min. mm 146
14	Connection Suction side	DIN 2532	Flow	Operating m³/h
15	Connection Discharge side	DIN 2532		Max- m³/h 132
16	Max Working Pressure bar	10		Min- m³/h 42
17	Shut-off head bar	4.21	Head	Operating m
18	Total weight kg	See the table of "Dimensions".		- (Qmax.) m 20.0
19	Shaft power kW			- (Qmin.) m 40.5
20			Max. Shaft Power at max. impeller	kW 10.90
21	Required pump NPSH m		Efficiency	%

## Materials

22	Impeller	CF8M		
23	Casing	AISI 316		
24	Shaft	AISI 316L		
25				
26				
27				

## Motor

28	Manufacturer	EPE Standard	Insulation class	F
29	Type	TEFC_3M 65-160/116_380_Three Phase	Phases	3~
30	Specific design	IE2 / 60 Hz / Pole pairs 1	Frame size	
31	Rated power kW	11	Weight	kg
32	Number of poles	2	Electric voltage	V 380
33	Speed rpm	3500	Electric current	A 20.3
34	Degree of protection	IP 55		
35				

## Remarks

# Performance Curve

Pump Name

3LM 65-160/116

Customer	Date	2024-06-20	Company
Contact	Item no.		Issued by
Phone	Project		Phone
E-mail	Project ID	Project redenumit 2024-06-20 10:03:09	E-mail

## Requested data

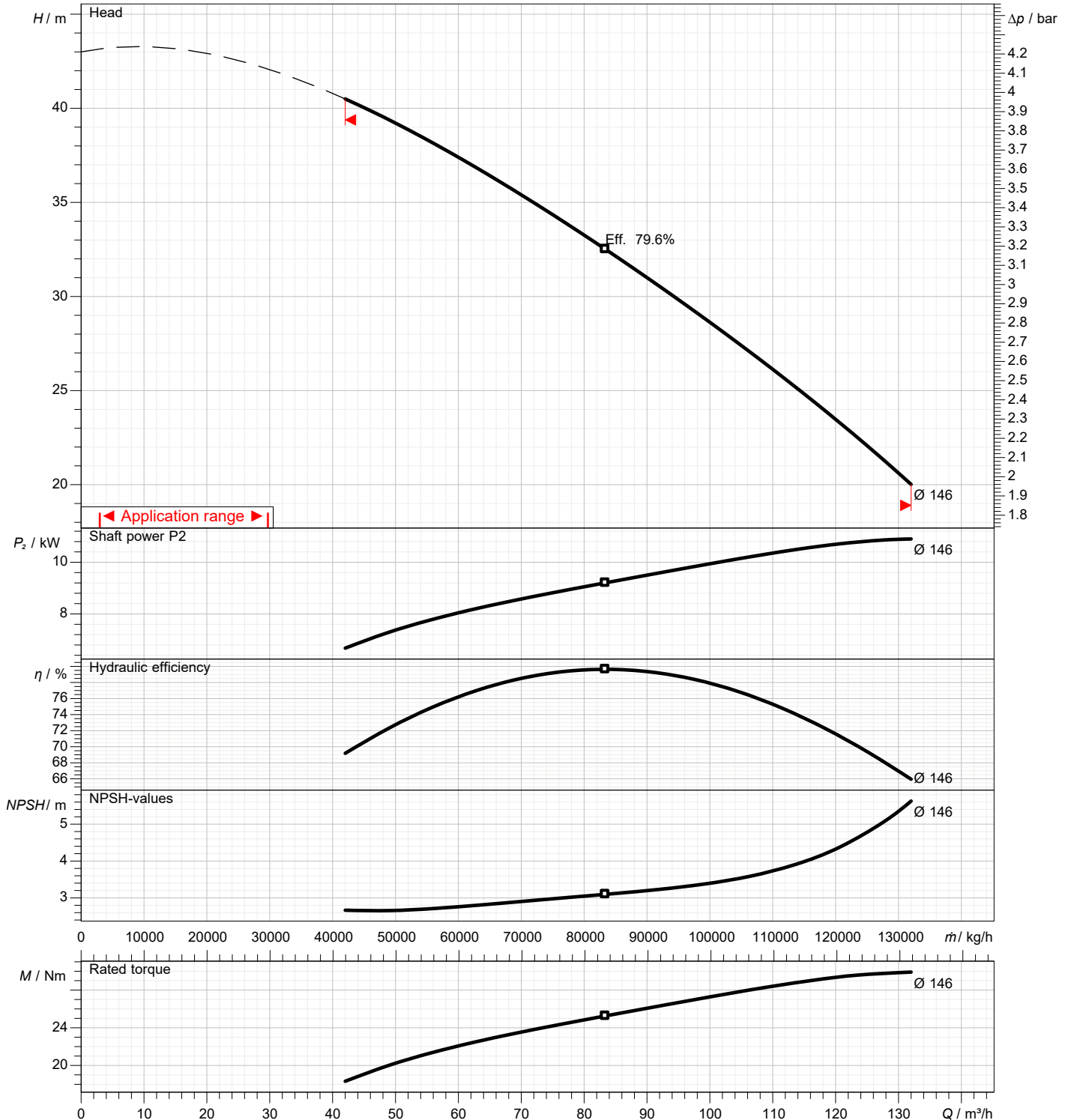
1	Flow	m³/h	
2	Head	m	
3	Geodetic head	m	

## Pump

Operating flow	m³/h		Frequency	Hz	60
Operating head	m		Number of poles		2
Impeller diameter designed	mm	146	Speed	rpm	3480

Test standard: ISO 9906:2012 - Grade3B

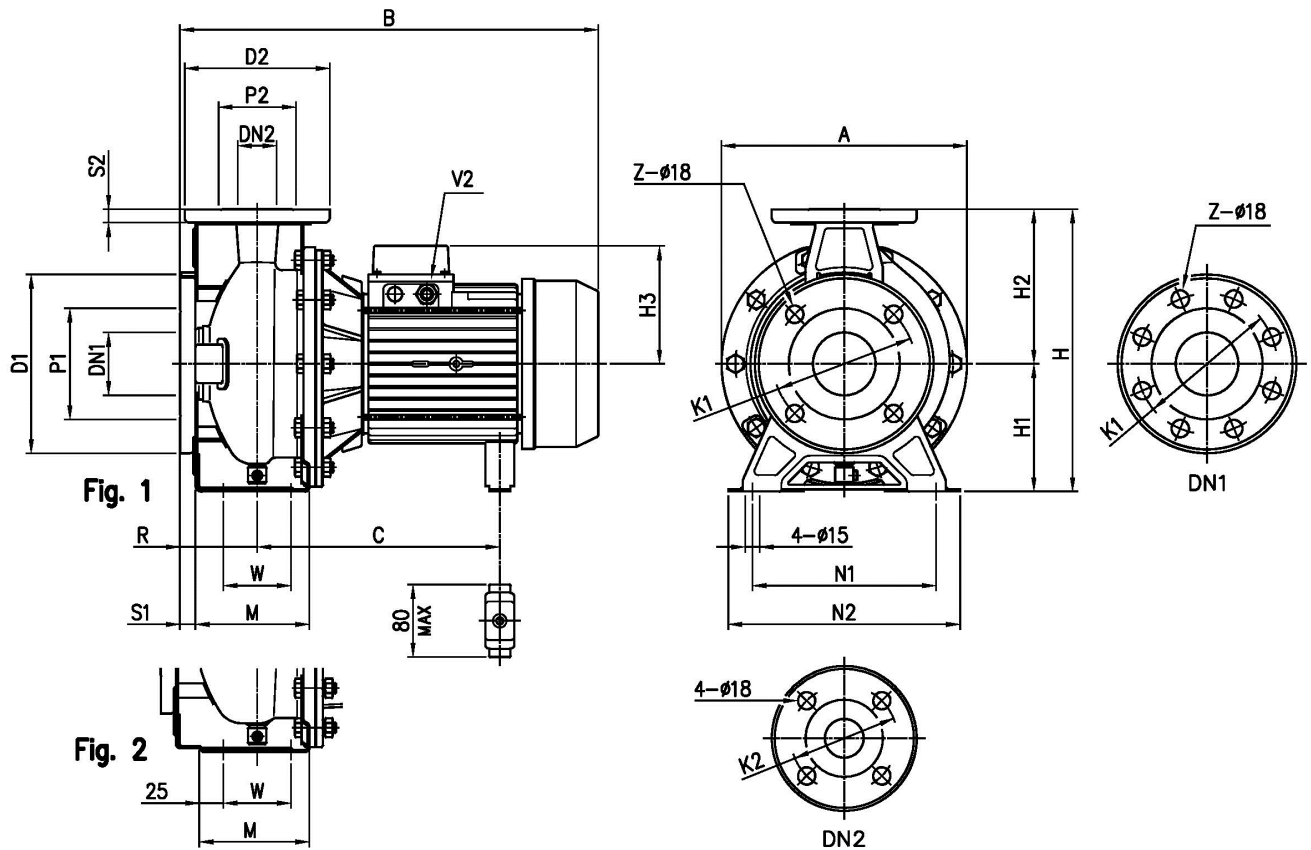
Water; 20°C; 998.3kg/m³; 1mm²/s



# Dimensions

Pump Name 3LM 65-160/116

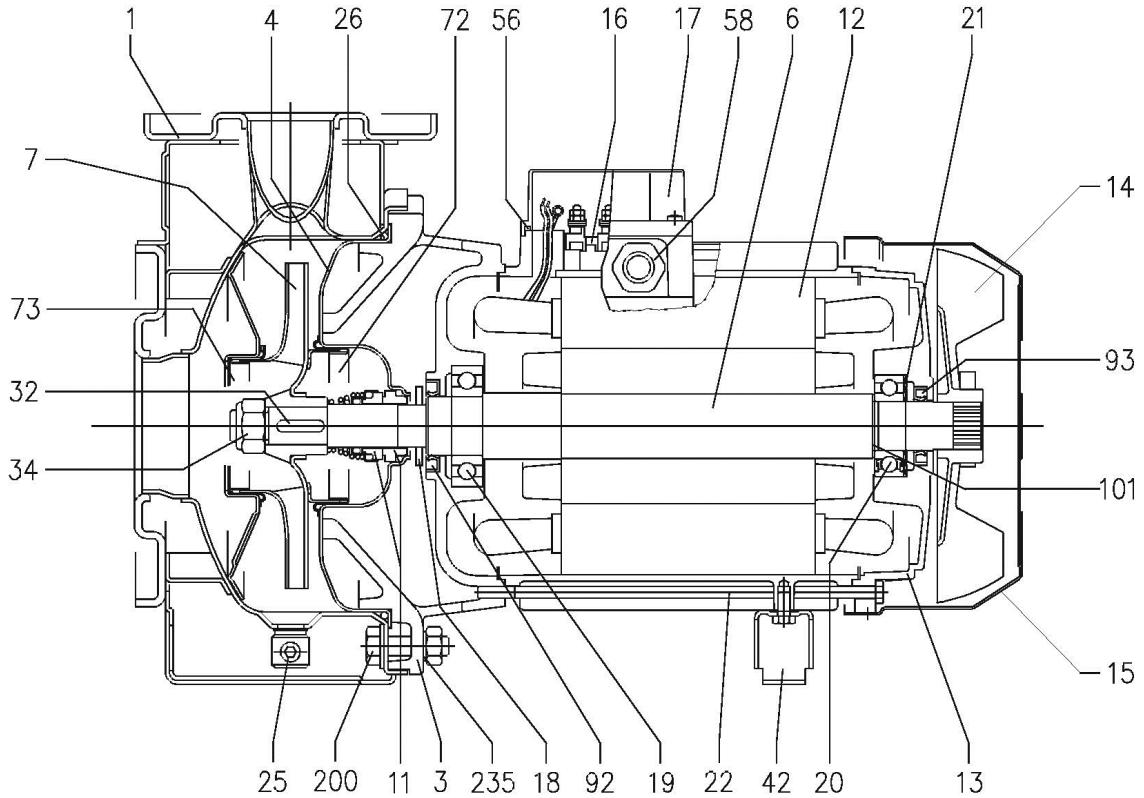
Customer	Date 2024-06-20	Company
Contact	Item no.	Issued by
Phone	Project	Phone
E-mail	Project ID Proiect redenumit 2024-06-20 10:03:09	E-mail



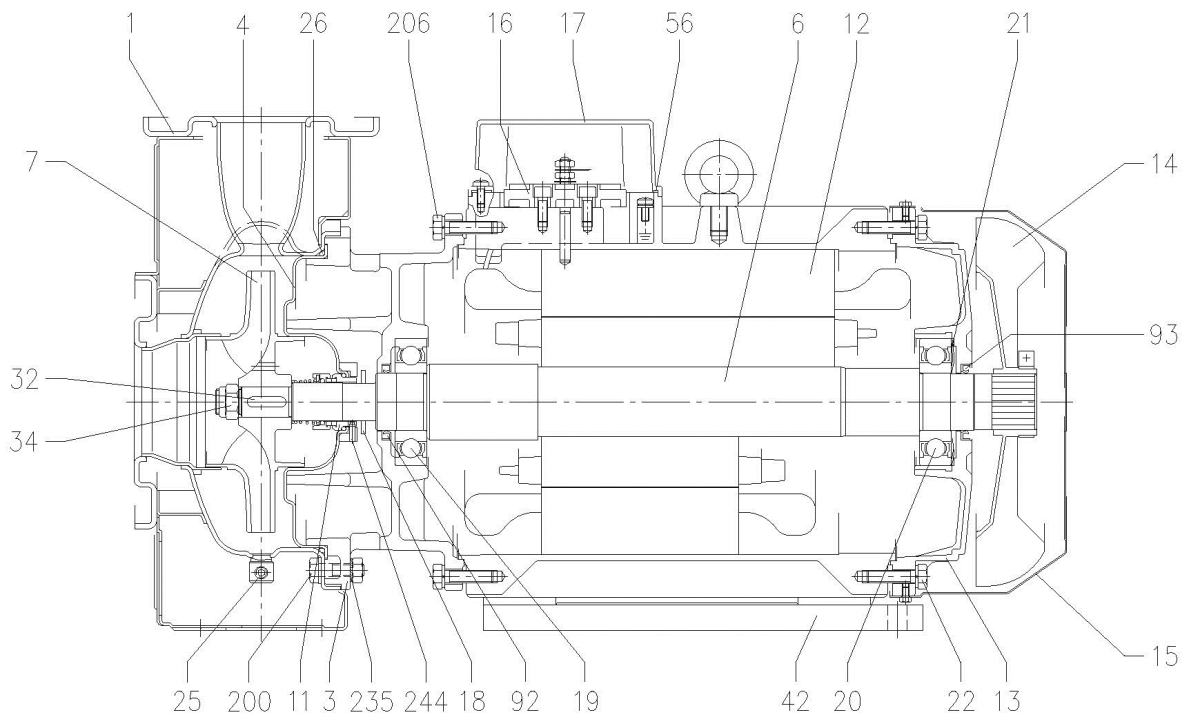
Dimensions in		mm		
1	A	296	H2	200
2	B	595	H3	178
3	C	359	M	140
4	Dia D1	200	N1	212
5	Dia D2	185	N2	280
6	Dia DN1	80	R	100
7	Dia DN2	65	S1	18
8	Dia K1	160	S2	16
9	Dia K2	145	V2	PG 21
10	Dia K2	145	W	95
11	Dia P1	134	Weight P&M	69,8 kg
12	Dia P2	115	Z	8
13	Fig	2	Z option	4
14	H	360		
15	H1	160		

Customer	Date 2024-06-20	Company
Contact	Item no.	Issued by
Phone	Project	Phone
E-mail	Project ID Proiect redenumit 2024-06-20 10:03:09	E-mail

UP TO 11 kW



15 kW AND ABOVE



(2/3)

# Construction

Pump Name 3LM 65-160/116

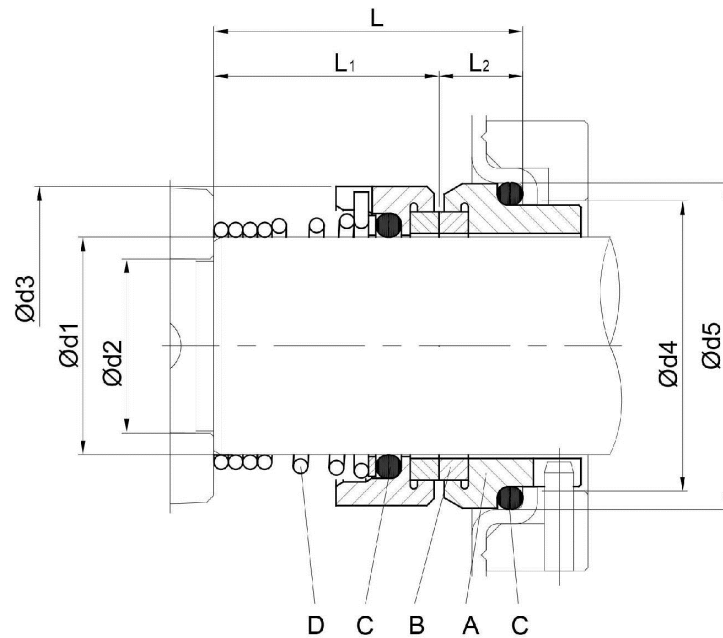
Customer	Date 2024-06-20	Company
Contact	Item no.	Issued by
Phone	Project	Phone
E-mail	Project ID Proiect redenumit 2024-06-20 10:03:09	E-mail

(3/3)

# Construction

Pump Name 3LM 65-160/116

Customer	Date 2024-06-20	Company
Contact	Item no.	Issued by
Phone	Project	Phone
E-mail	Project ID Proiect redenumit 2024-06-20 10:03:09	E-mail



Version	Pump type	Dimensions [mm]									Material Standard			
		d1	d2	d3	d4	d5	L	L1	L2	A Stationary seal ring	B Rotary seal ring	C O-ring	D Frame + spring	
L	32-125/160/200 40-125/160/200 50-125/160 65-125 65-160/7,56-9,26-116	22	19	36	31	37	37.5	27.5	9.5	SiC	SiC	FPM	EN 1.4401 (AISI 316)	