

Technical Data

Pump Name

3LP 32-200/5.5

Customer	Date	10.06.2024	Company
Contact	Item no.		Issued by
Phone	Project		Phone
E-mail	Project ID		E-mail

Requested data

1	Pump type	CENTRIFUGAL PUMPS	Fluid	Water	
2	Number of pumps / Reserve	1 / 0	Liquid temperature	°C	20
3	Flow	m³/h	Kin. viscosity	cSt	1.005
4	Head	m	Vapour pressure	kPa	2.34
5	Geodetic head	m	PH value		
6	Inlet pressure (pin)	kPa	Density	kg/m³	998.3
7	Available system NPSH		Solids	Weight %	0
8	Ambient temperature	°C	20		

Pump

9	Pump Name	3LP 32-200/5.5	Frequency	Hz	50		
10	Design	CENTRIFUGAL PUMPS	Installation type		STANDARD		
11	Manufacturer	EBARA	Impeller Diameter	Max.	mm	224	
12	Speed	rpm		2900	Designed	mm	224
13	No. of Stage	1		Min.	mm	224	
14	Connection	Suction side	DIN 2532	Flow	Operating	m³/h	
15	Connection	Discharge side	DIN 2532		Max-	m³/h	18
16	Max Working Pressure	kPa	1000		Min-	m³/h	6
17	Shut-off head	kPa	690.41	Head	Operating	m	
18	Total weight	kg	See the table of "Dimensions".		- (Qmax.)	m	58.3
19	Shaft power	kW			- (Qmin.)	m	69.0
20				Max. Shaft Power at max. impeller	kW	5.47	
21	Required pump NPSH	m		Efficiency	%		

Materials

22	Impeller	AISI 316L		
23	Casing	AISI 316L		
24	Shaft	AISI 316L		
25				
26				
27				

Motor

28	Manufacturer	LAFERT	Insulation class	F		
29	Type	TEFC_3P32-200/5.5_400_Three Phase	Phases	3~		
30	Specific design	IE3 / 50 Hz / Pole pairs 1	Frame size	132S		
31	Rated power	kW	5.5	Weight	kg	46
32	Number of poles	2	Electric voltage	V	400	
33	Speed	rpm	2900	Electric current	A	10
34	Degree of protection					
35						

Remarks

--

Performance Curve

Pump Name

3LP 32-200/5.5

Customer	Date 10.06.2024	Company
Contact	Item no.	Issued by
Phone	Project	Phone
E-mail	Project ID	E-mail

Requested data

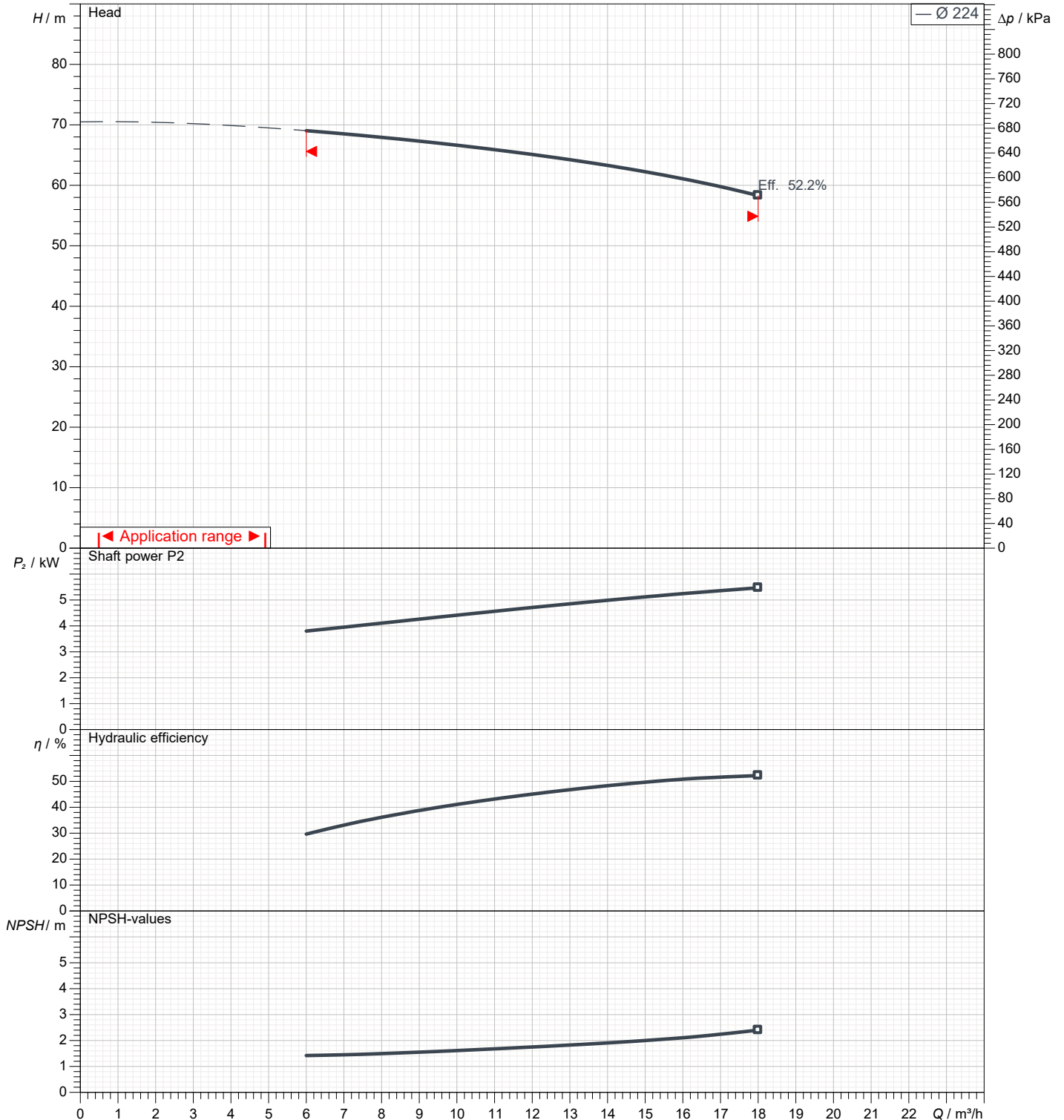
1	Flow	m³/h	
2	Head	m	
3	Geodetic head	m	

Pump

Operating flow	m³/h	Frequency	Hz	50	
Operating head	m	Number of poles		2	
Impeller diameter designed	mm	224	Speed	rpm	2900

Test standard: ISO 9906:2012 - Grade3B

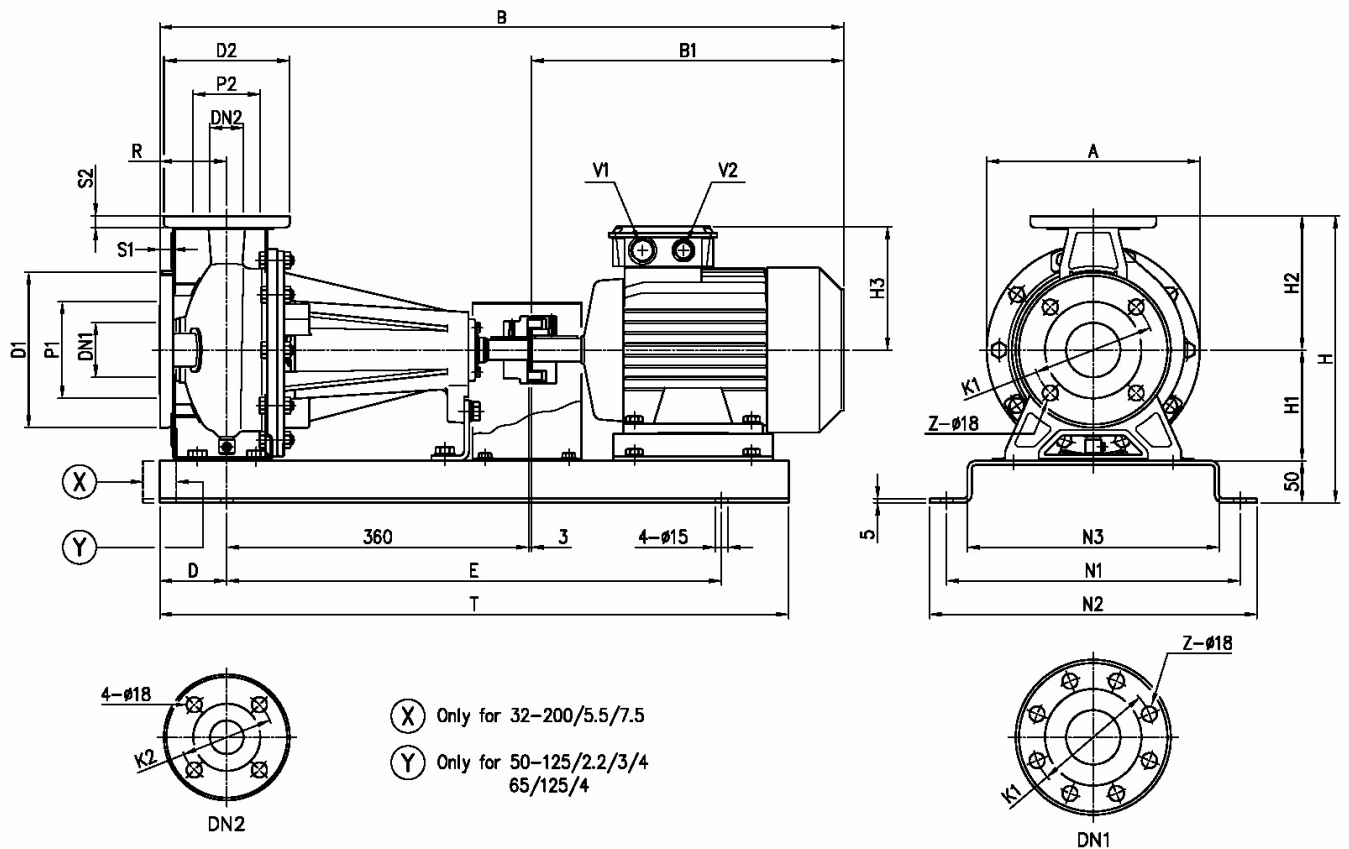
Water; 20°C; 998.3kg/m³; 1cSt



Dimensions

Pump Name 3LP 32-200/5.5

Customer	Date 10.06.2024	Company
Contact	Item no.	Issued by
Phone	Project	Phone
E-mail	Project ID	E-mail



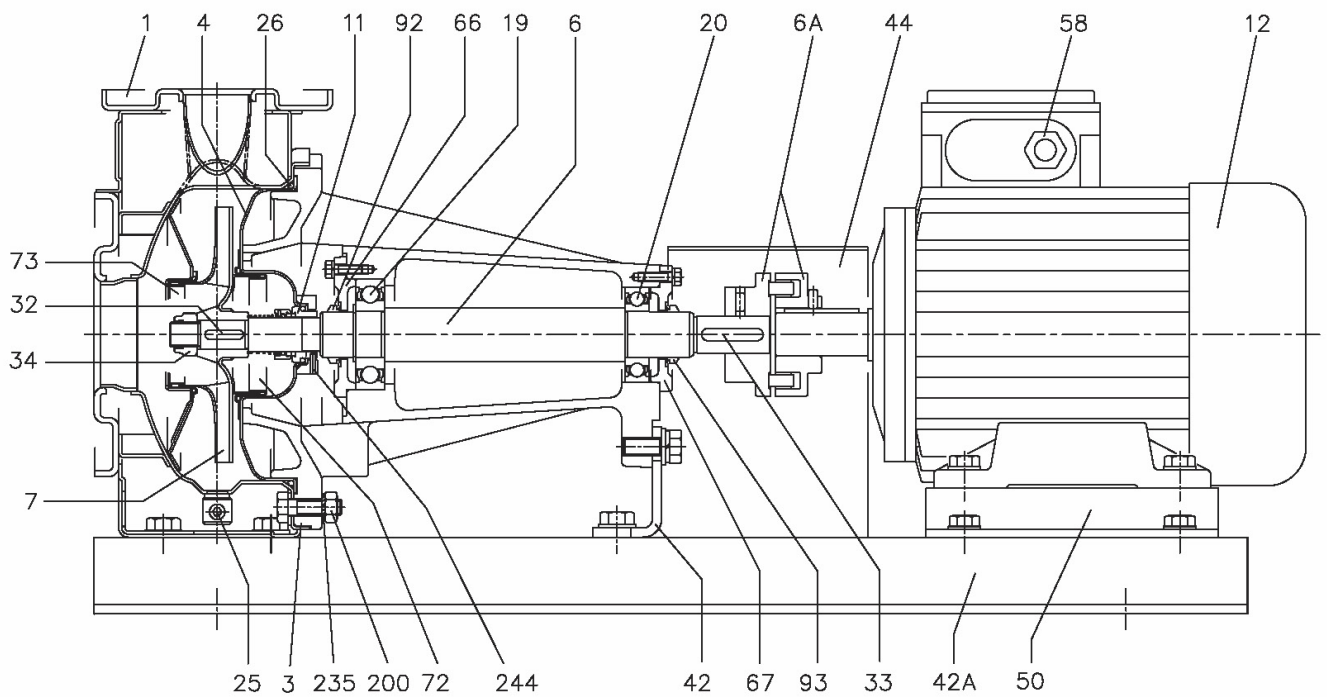
Dimensions in		mm		
1	A	296	H2	180
2	B	885	H3	198
3	B1	442	N1	350
4	D	100	N2	390
5	Dia D1	165	N3	300
6	Dia D2	140	R	80
7	Dia DN1	50	S1	16
8	Dia DN2	32	S2	14
9	Dia K1	125	T	850
10	Dia K2	100	V1	[M32x1].5
11	Dia P1	95	V2	[M32x1].5
12	Dia P2	75	Weight P&M	97 kg
13	E	650	Z	4
14	H	390		
15	H1	160		

(1/3)

Construction

Pump Name 3LP 32-200/5.5

Customer	Date 10.06.2024	Company
Contact	Item no.	Issued by
Phone	Project	Phone
E-mail	Project ID	E-mail



(2/3)

Construction

Pump Name 3LP 32-200/5.5

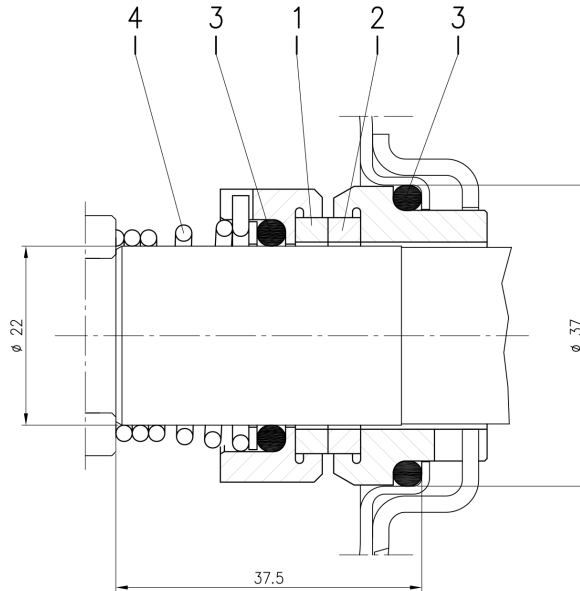
Customer	Date 10.06.2024	Company
Contact	Item no.	Issued by
Phone	Project	Phone
E-mail	Project ID	E-mail

(3/3)

Construction

Pump Name 3LP 32-200/5.5

Customer	Date 10.06.2024	Company
Contact	Item no.	Issued by
Phone	Project	Phone
E-mail	Project ID	E-mail



Version	Pump type	Material			
		1 Stationary seal ring	2 Rotary seal ring	3 Rubber	4 Frame + spring
L ø22	32-125/160/200 40-125/160/200 50-125/160/200 65-125 65-160/7.5-9.2-11	SiC	SiC	FPM	EN 1.4571 (AISI 316Ti)