

# Technical Data

Pump Name

3M 65-200/156 IE3

Customer	Date	2024-06-20	Company
Contact	Item no.		Issued by
Phone	Project		Phone
E-mail	Project ID	Proiect redenumit 2024-06-20 10:03:09	E-mail

## Requested data

1	Pump type	CENTRIFUGAL PUMPS	Fluid	Water
2	Number of pumps / Reserve	1 / 0	Liquid temperature	°C 20
3	Flow	m³/h	Kin. viscosity	mm²/s 1.005
4	Head	m	Vapour pressure	bar 0.0234
5	Geodetic head	m	PH value	
6	Inlet pressure (pin)	bar	Density	kg/m³ 998.3
7	Available system NPSH		Solids	Weight % 0
8	Ambient temperature	°C 20		

## Pump

9	Pump Name	3M 65-200/156 IE3	Frequency	Hz	60
10	Design	CENTRIFUGAL PUMPS	Installation type		STANDARD
11	Manufacturer	EBARA	Impeller Diameter	Max.	mm 165
12	Speed	rpm 3520		Designed	mm 165
13	No. of Stage	1		Min.	mm 165
14	Connection	Suction side DIN 2532	Flow	Operating	m³/h
15	Connection	Discharge side DIN 2532		Max-	m³/h 126
16	Max Working Pressure	bar 10		Min-	m³/h 42
17	Shut-off head	bar 5.53	Head	Operating	m
18	Total weight	kg See the table of "Dimensions".		- (Qmax.)	m 32.6
19	Shaft power	kW		- (Qmin.)	m 53.5
20			Max. Shaft Power at max. impeller	kW	14.93
21	Required pump NPSH	m	Efficiency	%	

## Materials

22	Impeller	AISI 316		
23	Casing	AISI 304		
24	Shaft	AISI 304		
25				
26				
27				

## Motor

28	Manufacturer	EPE Standard	Insulation class	F
29	Type	TEFC_3M 65-200/156_460_Three Phase	Phases	3~
30	Specific design	IE3 / 60 Hz / Pole pairs 1	Frame size	
31	Rated power	kW 15	Weight	kg
32	Number of poles	2	Electric voltage	V 460
33	Speed	rpm 3500	Electric current	A 23.9
34	Degree of protection	IP 55		
35				

## Remarks

# Performance Curve

Pump Name

3M 65-200/156 IE3

Customer	Date	2024-06-20	Company
Contact	Item no.		Issued by
Phone	Project		Phone
E-mail	Project ID	Proiect redenumit 2024-06-20 10:03:09	E-mail

### Requested data

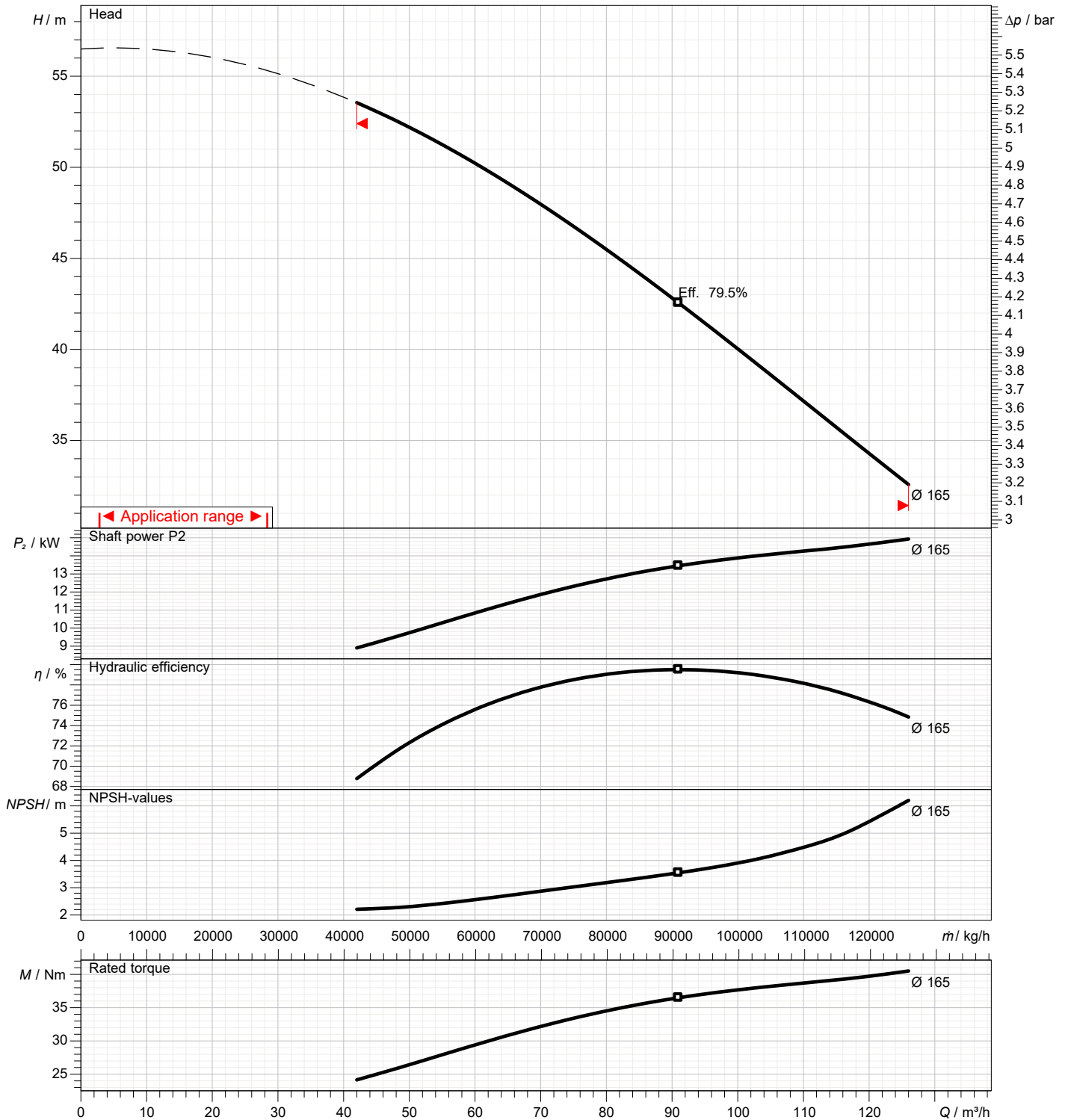
1	Flow	m³/h	
2	Head	m	
3	Geodetic head	m	

### Pump

Operating flow	m³/h		Frequency	Hz	60
Operating head	m		Number of poles		2
Impeller diameter designed	mm	165	Speed	rpm	3520

Test standard: ISO 9906:2012 - Grade3B

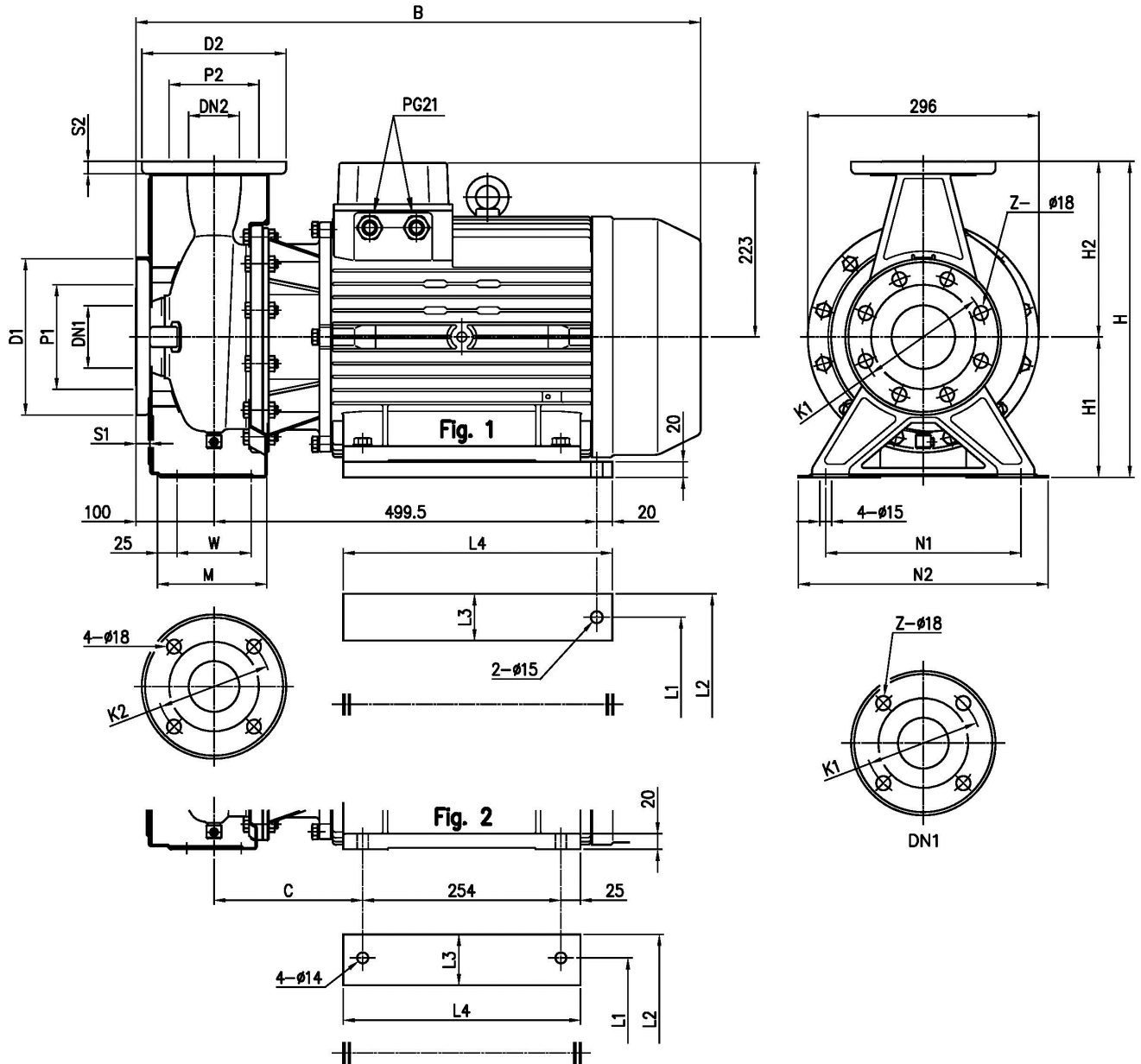
Water; 20°C; 998.3kg/m³; 1mm²/s



# Dimensions

Pump Name 3M 65-200/156 IE3

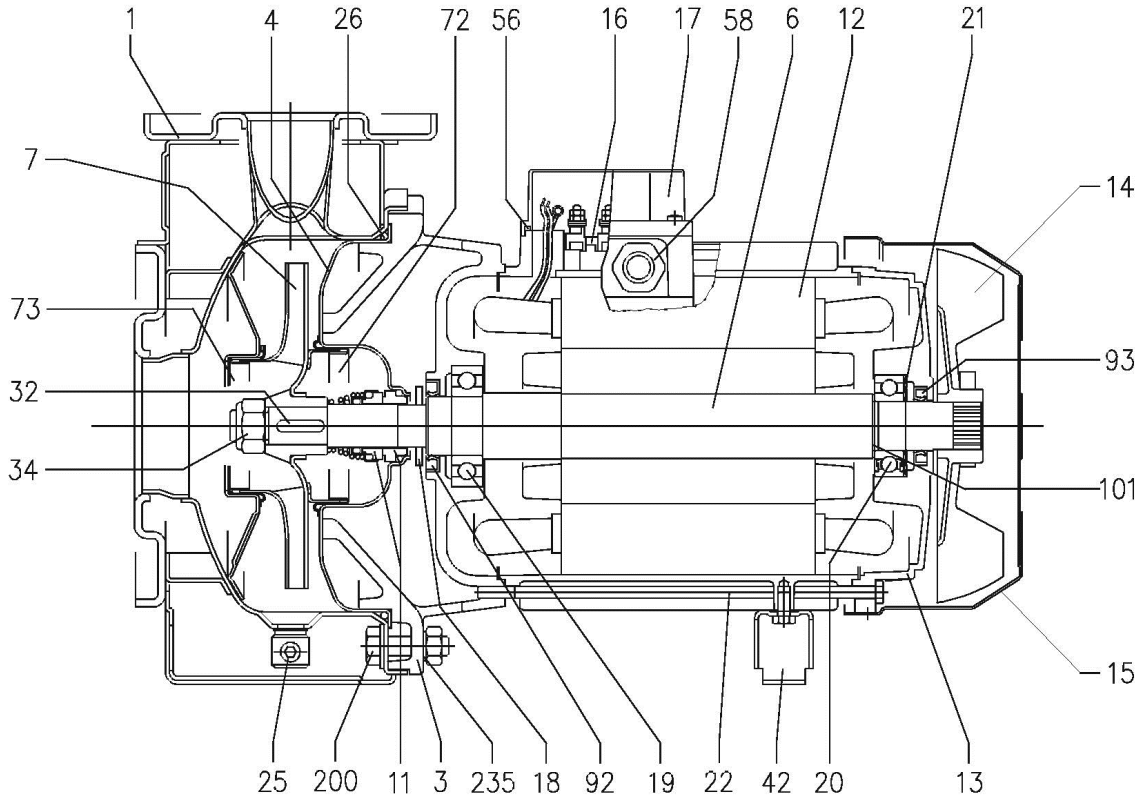
Customer	Date 2024-06-20	Company
Contact	Item no.	Issued by
Phone	Project	Phone
E-mail	Project ID Proiect redenumit 2024-06-20 10:03:09	E-mail



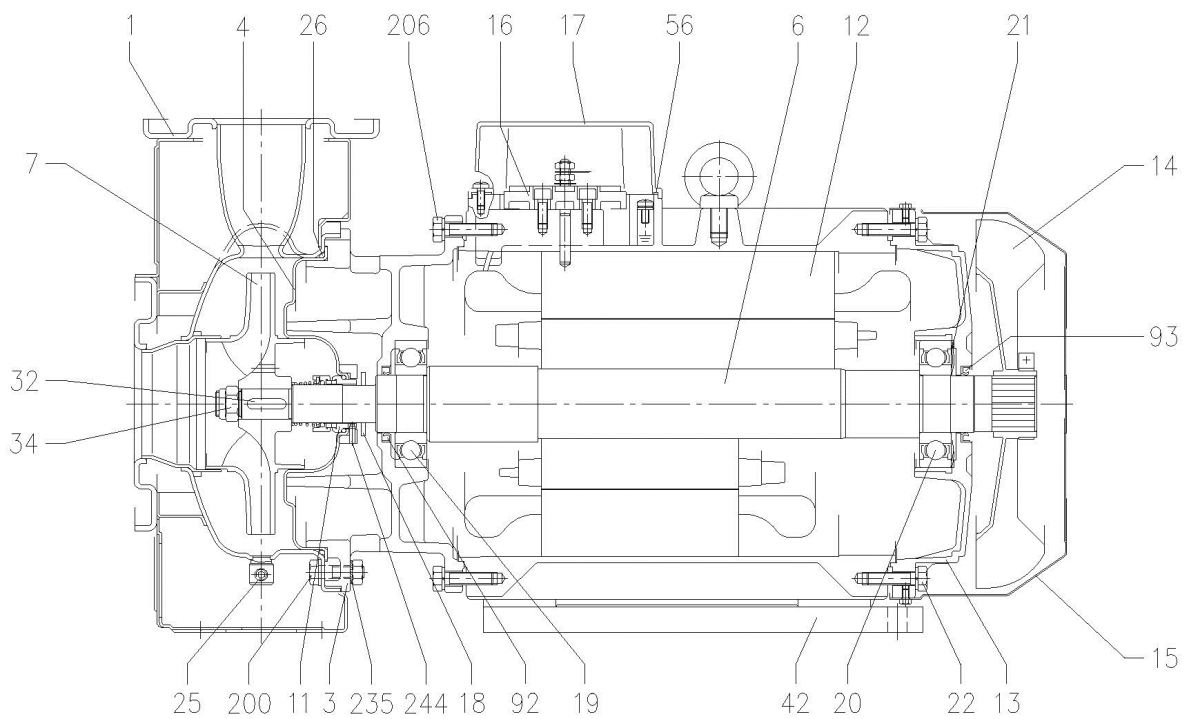
Dimensions in		mm						
1	B	732	L3	60				
2	Dia D1	200	L4	345				
3	Dia D2	185	M	140				
4	Dia DN1	80	N1	250				
5	Dia DN2	65	N2	320				
6	Dia K1	160	S1	18				
7	Dia K2	145	S2	16				
8	Dia P1	134	W	95				
9	Dia P2	115	Weight P&M	109,1 kg				
10	Fig	1	Z	8				
11	H	405	Z option	4				
12	H1	180						
13	H2	225						
14	L1	254						
15	L2	314						

Customer	Date 2024-06-20	Company
Contact	Item no.	Issued by
Phone	Project	Phone
E-mail	Project ID Proiect redenumit 2024-06-20 10:03:09	E-mail

UP TO 11 kW



15 kW AND ABOVE



(2/3)

# Construction

Pump Name 3M 65-200/156 IE3

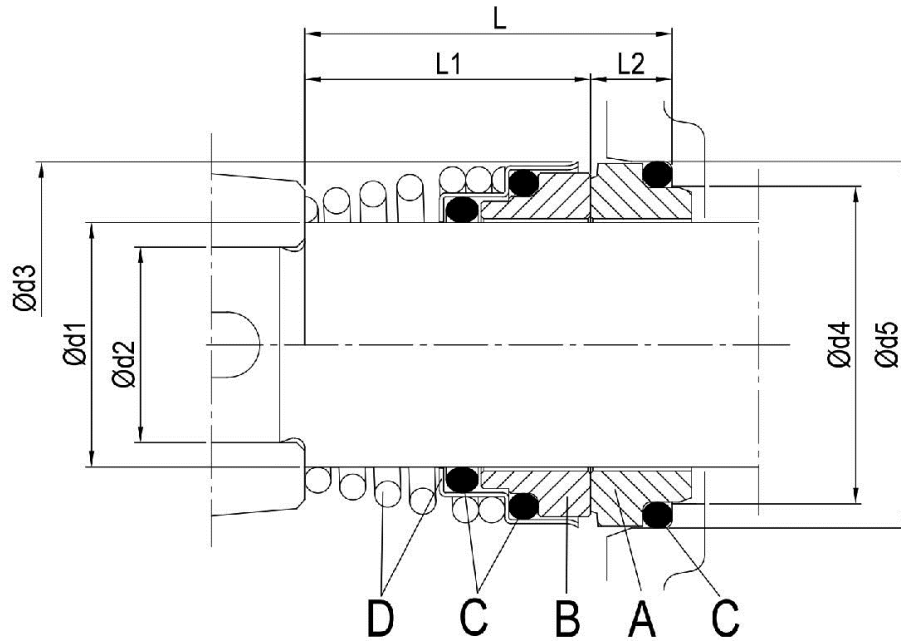
Customer	Date 2024-06-20	Company
Contact	Item no.	Issued by
Phone	Project	Phone
E-mail	Project ID Proiect redenumit 2024-06-20 10:03:09	E-mail

(3/3)

# Construction

Pump Name 3M 65-200/156 IE3

Customer	Date 2024-06-20	Company
Contact	Item no.	Issued by
Phone	Project	Phone
E-mail	Project ID Proiect redenumit 2024-06-20 10:03:09	E-mail



Pump type	Dimensions [mm]								Material Standard			
	d1	d2	d3	d4	d5	L	L1	L2	A Stationary seal ring	B Rotary seal ring	C O-ring	D Frame + spring
65-160/156 65-200	30	24	46	39	45	42.5	32.5	10	Carbon	Ceramic	NBR	EN 1.4401 (AISI 316)