

Technical Data

Pump Name

BHSE 8190-3-R1 5/28.0 M8

| | | | |
|----------|------------|---------------------------------------|-----------|
| Customer | Date | 2024-06-13 | Company |
| Contact | Item no. | | Issued by |
| Phone | Project | | Phone |
| E-mail | Project ID | Proiect redenumit 2024-06-13 13:12:02 | E-mail |

Requested data

| | | | | | | |
|---|---------------------------|------|------------------------------|--------------------|----------|--------|
| 1 | Pump type | | SUBMERSIBLE MULTISTAGE PUMPS | Fluid | | Water |
| 2 | Number of pumps / Reserve | | 1 / 0 | Liquid temperature | °C | 20 |
| 3 | Flow | m³/h | | Kin. viscosity | mm²/s | 1.005 |
| 4 | Head | m | | Vapour pressure | bar | 0.0234 |
| 5 | Geodetic head | m | | PH value | | |
| 6 | Inlet pressure (pin) | bar | 0 | Density | kg/m³ | 998.3 |
| 7 | Available system NPSH | | | Solids | Weight % | 0 |
| 8 | Ambient temperature | °C | 20 | | | |

Pump

| | | | | | | | |
|----|----------------------|----------------|--------------------------------|-----------------------------------|-----------|----------|------|
| 9 | Pump Name | | BHSE 8190-3-R1 5/28.0 M8 | Frequency | Hz | 50 | |
| 10 | Design | | SUBMERSIBLE MULTISTAGE PUMPS | Installation type | | STANDARD | |
| 11 | Manufacturer | | EBARA | Impeller Diameter | Max. | mm | 129 |
| 12 | Speed | rpm | 2900 | | Designed | mm | 129 |
| 13 | No. of Stage | | 3 | | Min. | mm | 129 |
| 14 | Connection | Suction side | | Flow | Operating | m³/h | |
| 15 | Connection | Discharge side | | | Max- | m³/h | 190 |
| 16 | Max Working Pressure | bar | | | Min- | m³/h | 90 |
| 17 | Shut-off head | bar | 6.64 | Head | Operating | m | |
| 18 | Total weight | kg | See the table of "Dimensions". | | - (Qmax.) | m | 31.5 |
| 19 | Shaft power | kW | | | - (Qmin.) | m | 57.0 |
| 20 | | | | Max. Shaft Power at max. impeller | kW | 27.47 | |
| 21 | Required pump NPSH | m | | Efficiency | % | | |

Materials

| | | | | | | |
|----|----------|--|-------------------------------------|---------------|--|-----------------|
| 22 | Casing | | Casting iron | Washers | | Stainless steel |
| 23 | Impeller | | Stainless steel - precision casting | Paint (Motor) | | Synthetic alkyd |
| 24 | Shaft | | Stainless steel | | | |
| 25 | Stainet | | Stainless steel | | | |
| 26 | Screw | | Stainless steel | | | |
| 27 | Nuts | | Stainless steel | | | |

Motor

| | | | | | | |
|----|----------------------|-----|--|------------------|----|-------|
| 28 | Manufacturer | | EBAS | Insulation class | | Y |
| 29 | Type | | M8 37.5HP 220V TRIF. 50Hz | Phases | | 3~ |
| 30 | Specific design | | Submersible water filled type / 50 Hz / Pole pairs 1 | Frame size | | 8 |
| 31 | Rated power | kW | 27.98 | Weight | kg | 136 |
| 32 | Number of poles | | 2 | Electric voltage | V | 220 |
| 33 | Speed | rpm | 2905 | Electric current | A | 110.1 |
| 34 | Degree of protection | | IP 68 | | | |
| 35 | | | | | | |

Remarks

Performance Curve

Pump Name

BHSE 8190-3-R1 5/28.0 M8

| | | | |
|----------|------------|---------------------------------------|-----------|
| Customer | Date | 2024-06-13 | Company |
| Contact | Item no. | | Issued by |
| Phone | Project | | Phone |
| E-mail | Project ID | Project redenumit 2024-06-13 13:12:02 | E-mail |

Requested data

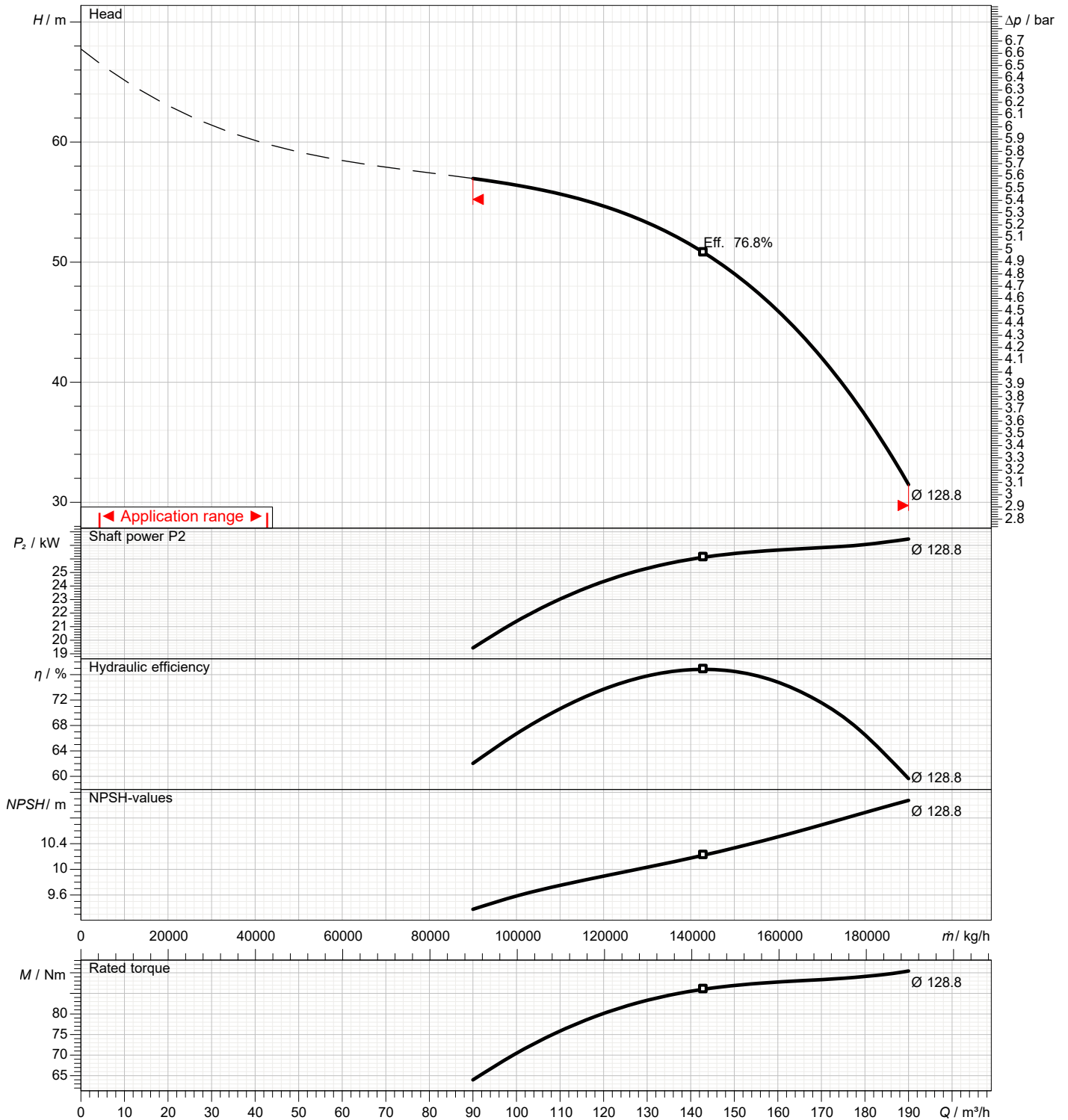
| | | | |
|---|---------------|------|--|
| 1 | Flow | m³/h | |
| 2 | Head | m | |
| 3 | Geodetic head | m | |

Pump

| | | | | | |
|----------------------------|------|-----|-----------------|-----|------|
| Operating flow | m³/h | | Frequency | Hz | 50 |
| Operating head | m | | Number of poles | | 2 |
| Impeller diameter designed | mm | 129 | Speed | rpm | 2900 |

Test standard: ISO 9906:2012 - Grade3B

Water; 20°C; 998.3kg/m³; 1mm²/s



Dimensions

Pump name BHSE 8190-3-R1 5/28.0 M8

| | | | |
|----------|------------|---------------------------------------|-----------|
| Customer | Date | 2024-06-13 | Company |
| Contact | Item no. | | Issued by |
| Phone | Project | | Phone |
| E-mail | Project ID | Proiect redenumit 2024-06-13 13:12:02 | E-mail |



| Dimensions in | | mm | | | | | | |
|---------------|-------------------|----------|--|--|--|--|--|--|
| 1 | D_01 Cable | 193 | | | | | | |
| 2 | L | 2056 | | | | | | |
| 3 | LB | 988 | | | | | | |
| 4 | LM | 1068 | | | | | | |
| 5 | M Weight (kg) | 136 | | | | | | |
| 6 | P Weight (kg) | 71.2 | | | | | | |
| 7 | Total Weight (kg) | 207.2 | | | | | | |
| 8 | Φ (inch) | 5 (inch) | | | | | | |
| 9 | | | | | | | | |
| 10 | | | | | | | | |
| 11 | | | | | | | | |
| 12 | | | | | | | | |
| 13 | | | | | | | | |
| 14 | | | | | | | | |
| 15 | | | | | | | | |

(1/4)

Construction

Pump name

| | | |
|----------|--|-----------|
| Customer | Date 2024-06-13 | Company |
| Contact | Item no. | Issued by |
| Phone | Project | Phone |
| E-mail | Project ID Proiect redenumit 2024-06-13 13:12:02 | E-mail |



(2/4)

Construction

Pump name

| | | | |
|----------|------------|---------------------------------------|-----------|
| Customer | Date | 2024-06-13 | Company |
| Contact | Item no. | | Issued by |
| Phone | Project | | Phone |
| E-mail | Project ID | Project redenumit 2024-06-13 13:12:02 | E-mail |

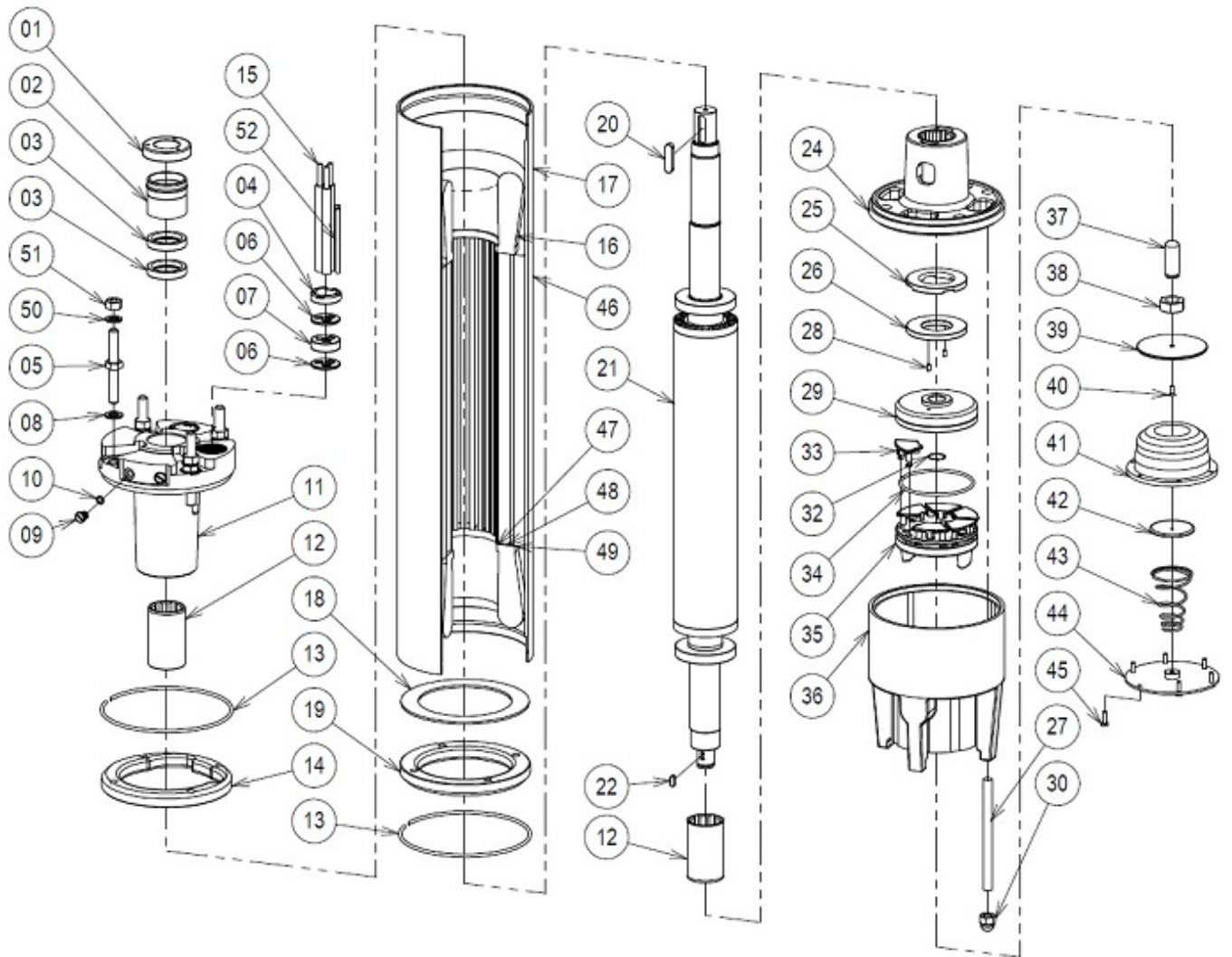
| BHSE8_Parts Table | | |
|-------------------|-----------------------|-----------------|
| No. | Name | MATERIAL |
| 1 | DISCHARGE CASING | CAST IRON |
| 2 | VALVE ROD GUIDE | BRASS |
| 3 | SPRING | STAINLESS STEEL |
| 4 | VALVE DISK | STAINLESS STEEL |
| 5 | VALVE SHEET | NBR RUBBER |
| 6 | O-RING | NBR |
| 7 | INTERMEDIATE CASING 2 | CAST IRON |
| 8 | STUD BOLT | STAINLESS STEEL |
| 9 | SPRING WASHER | STAINLESS STEEL |
| 10 | NUT | STAINLESS STEEL |
| 11 | BEARING SLEEVE | NBR |
| 12 | CASING WEARING RING | BRASS |
| 13 | INTERMEDIATE CASING | CAST IRON |
| 14 | TAPER COLLET | STAINLESS STEEL |
| 15 | IMPELLER | STAINLESS STEEL |
| 16 | CABLE COVER | STAINLESS STEEL |
| 17 | BOLT | STAINLESS STEEL |
| 18 | SHAFT | STAINLESS STEEL |
| 19 | KEY | STAINLESS STEEL |
| 20 | BOLT | CARBON STEEL |
| 21 | COUPLING | STAINLESS STEEL |
| 22 | SUCTION CASING | CAST IRON |
| 23 | STRAINER | STAINLESS STEEL |
| 24 | ADAPTER | CAST IRON |
| 25 | NUT | STAINLESS STEEL |
| 26 | SPRING WASHER | STAINLESS STEEL |
| 27 | STUD BOLT | STAINLESS STEEL |

(3/4)

Construction

Pump name

| | | |
|----------|--|-----------|
| Customer | Date 2024-06-13 | Company |
| Contact | Item no. | Issued by |
| Phone | Project | Phone |
| E-mail | Project ID Proiect redenumit 2024-06-13 13:12:02 | E-mail |



(4/4)

Construction

Pump name

| | | |
|----------|--|-----------|
| Customer | Date 2024-06-13 | Company |
| Contact | Item no. | Issued by |
| Phone | Project | Phone |
| E-mail | Project ID Project redenumit 2024-06-13 13:12:02 | E-mail |

| Motor M8_Parts Table | | |
|----------------------|-------------------------|------------------------------|
| No. | Name | MATERIAL |
| 1 | SAND SLINGER | CARBON STEEL/NBR |
| 2 | SEAL COVER | CARBON STEEL |
| 3 | OIL SEAL | NBR |
| 4 | CABLE NUT | STAINLESS STEEL |
| 5 | STUD BOLT | STAINLESS STEEL |
| 6 | PRESSURE RING FOR CABLE | BRASS |
| 7 | CABLE GLAND | NBR |
| 8 | METAL GASKET | BRASS |
| 9 | PLUG | BRASS |
| 10 | O-RING | NBR |
| 11 | UPPER BRACKET | CAST IRON |
| 12 | BEARING | GRAPHITE |
| 13 | STOP RING | CARBON STEEL |
| 14 | UPPER FRAME RING | CARBON STEEL |
| 15 | LEAD CABLE | CUPPER |
| 16 | COIL | CUPPER |
| 17 | MOTOR FRAME | CARBON STEEL |
| 18 | COIL PROTECTOR | PVC |
| 19 | LOWER FRAME RING | CARBON STEEL |
| 20 | KEY | STAINLESS STEEL |
| 21 | ROTOR WITH SHAFT | STAINLESS STEEL/CARBON STEEL |
| 22 | KEY | STAINLESS STEEL |
| 24 | LOWER BRACKET | CAST IRON |
| 25 | UPPER BEARING "A" | GRAPHITE |
| 26 | UPPER BEARING "B" | GRAPHITE |
| 27 | STUD BOLT | STAINLESS STEEL |
| 28 | LOCKING PIN | STAINLESS STEEL |
| 29 | THRUST DISK | STAINLESS STEEL |
| 30 | NUT CAP | CARBON STEEL |
| 32 | STOP RING | CARBON STEEL |
| 33 | THRUST PAD | STAINLESS STEEL |
| 34 | O-RING | NBR |
| 35 | OSCILLATING DISC | CAST IRON |
| 36 | THRUST BEARING HOUSING | CAST IRON |
| 37 | ADJUSTING NUT | CARBON STEEL |
| 38 | NUT | CARBON STEEL |
| 39 | DIAPHRAGM PROTECTOR | STAINLESS STEEL |
| 40 | PLUG | BRASS |
| 41 | DIAPHRAGM | CR |
| 42 | SPRING DISC | STAINLESS STEEL |
| 43 | SPRING | STAINLESS STEEL |
| 44 | DIAPHRAGM COVER | STAINLESS STEEL |
| 45 | BOLT | CARBON STEEL |
| 46 | COMPLETE STATOR | - |
| 47 | SLOT ISOLATOR | POLYESTER |
| 48 | WEDGE ISOLATOR | POLYESTER |
| 50 | SPRING WASHER | STAINLESS STEEL |
| 51 | NUT | STAINLESS STEEL |