

Technical Data

Pump Name

CDX 120/156 IE3

Customer	Date	2024-07-01	Company
Contact	Item no.		Issued by
Phone	Project		Phone
E-mail	Project ID	Proiect redenumit 2024-07-01 15:55:48	E-mail

Requested data

1	Pump type	CENTRIFUGAL PUMPS	Fluid	Water
2	Number of pumps / Reserve	1 / 0	Liquid temperature	°C
3	Flow	m³/h	Kin. viscosity	mm²/s
4	Head	m	Vapour pressure	bar
5	Geodetic head	m	PH value	
6	Inlet pressure (pin)	bar	Density	kg/m³
7	Available system NPSH		Solids	Weight %
8	Ambient temperature	°C		

Pump

9	Pump Name	CDX 120/156 IE3	Frequency	Hz	60	
10	Design	CENTRIFUGAL PUMPS	Installation type		STANDARD	
11	Manufacturer	EBARA	Impeller Diameter	Max.	mm	
12	Speed	rpm		3450	Designed	mm
13	No. of Stage	1		Min.	mm	132
14	Connection	Suction side	UNI ISO 228-1	Flow	Operating	m³/h
15	Connection	Discharge side	UNI ISO 228-1		Max-	m³/h
16	Max Working Pressure	bar	8		Min-	m³/h
17	Shut-off head	bar	3.13	Head	Operating	m
18	Total weight	kg	See the table of "Dimensions".		- (Qmax.)	m
19	Shaft power	kW			- (Qmin.)	m
20			Max. Shaft Power at max. impeller	kW	1.05	
21	Required pump NPSH	m	Efficiency	%		

Materials

22	Impeller	AISI 304		
23	Casing	AISI 304		
24	Shaft	AISI 303 (wet extension)		
25				
26				
27				

Motor

28	Manufacturer	EPE Standard	Insulation class	F	
29	Type	TEFC_CD_X 120/156_460_Three Phase	Phases	3~	
30	Specific design	IE3 / 60 Hz / Pole pairs 1	Frame size		
31	Rated power	kW	1.1	Weight	kg
32	Number of poles	2	Electric voltage	V	460
33	Speed	rpm	3450	Electric current	A
34	Degree of protection	IP 55			
35					

Remarks

Performance Curve

Pump Name

CDX 120/156 IE3

Customer	Date	2024-07-01	Company
Contact	Item no.		Issued by
Phone	Project		Phone
E-mail	Project ID	Project redenumit 2024-07-01 15:55:48	E-mail

Requested data

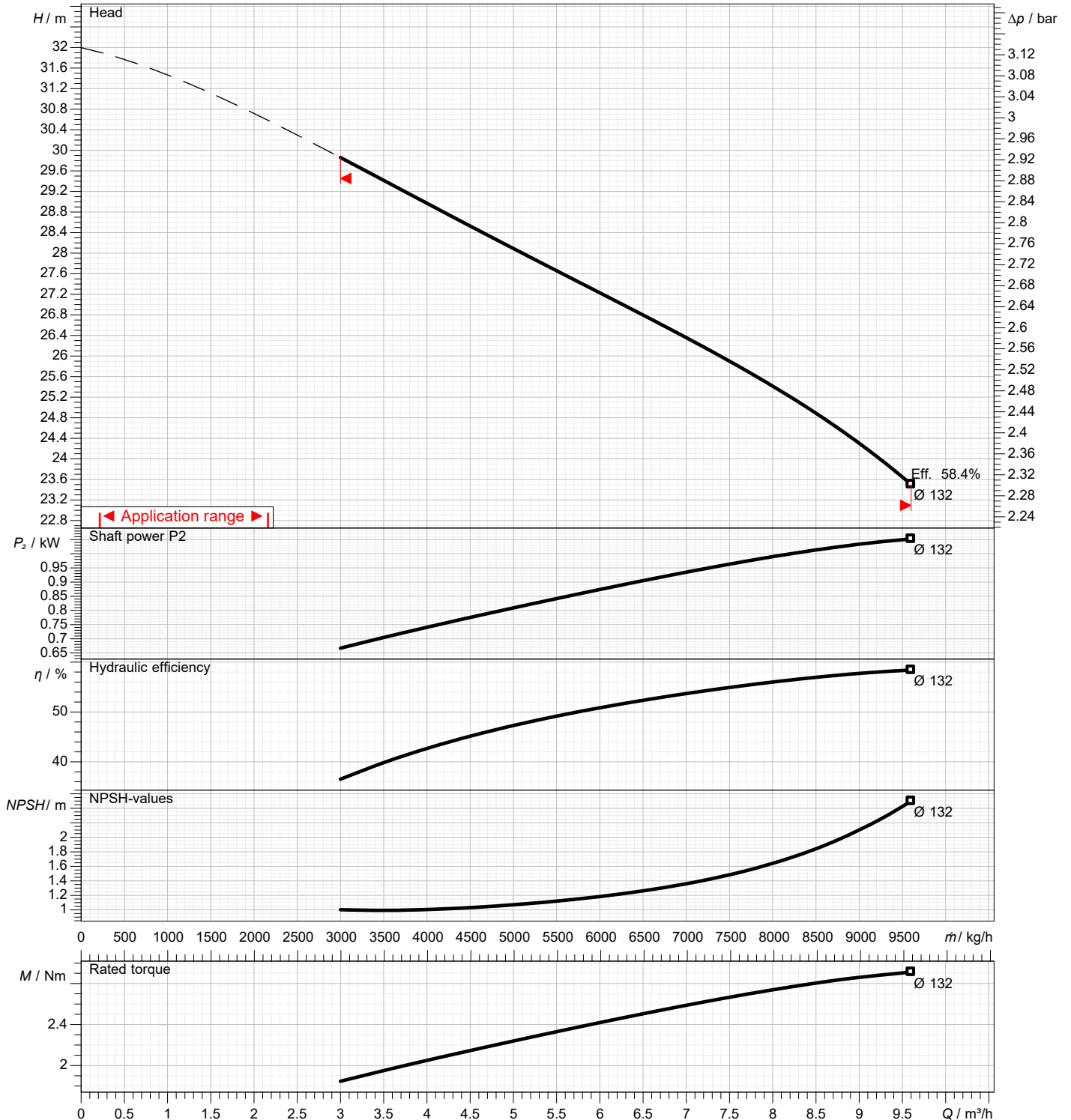
1	Flow	m³/h	
2	Head	m	
3	Geodetic head	m	

Pump

Operating flow	m³/h		Frequency	Hz	60
Operating head	m		Number of poles		2
Impeller diameter designed	mm	132	Speed	rpm	3450

Test standard: ISO 9906:2012 - Grade3B

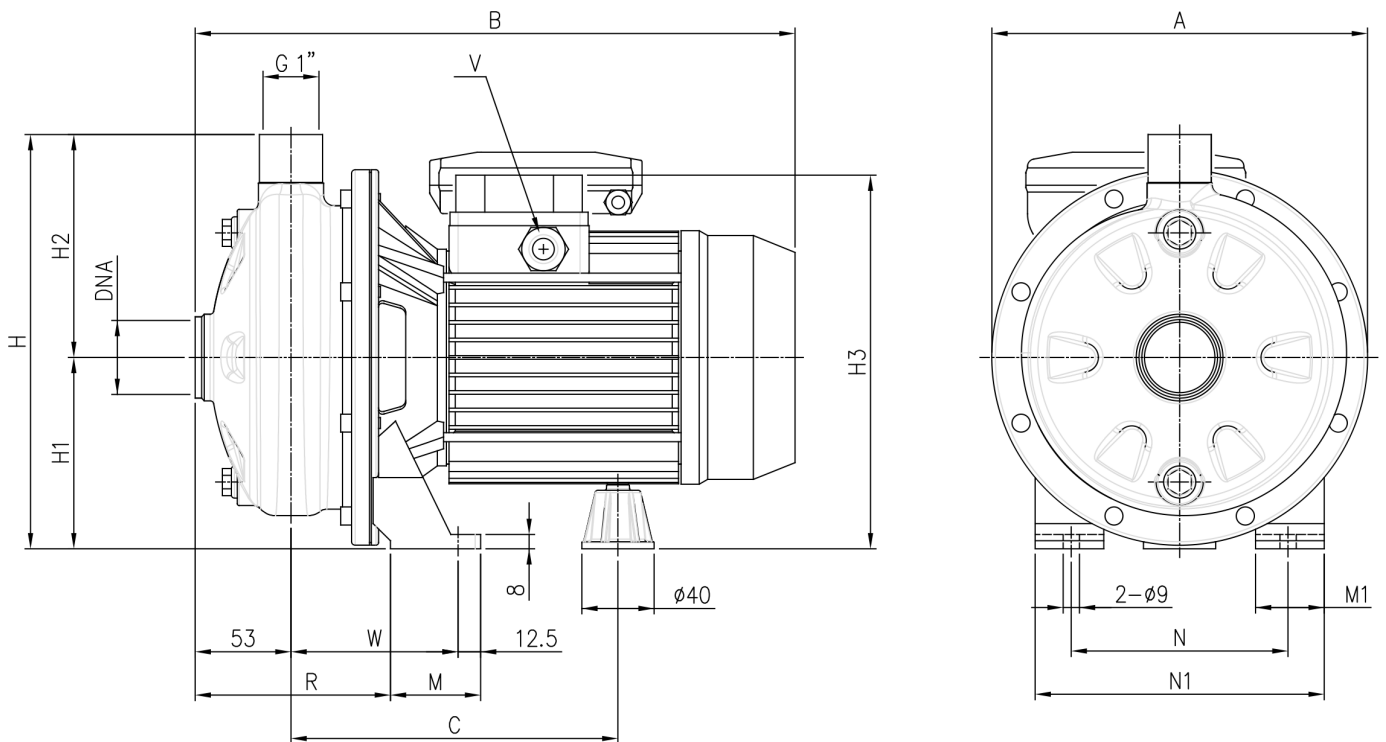
Water; 20°C; 998.3kg/m³; 1mm²/s



Dimensions

Pump Name **CDX 120/156 IE3**

Customer	Date 2024-07-01	Company
Contact	Item no.	Issued by
Phone	Project	Phone
E-mail	Project ID Proiect redenumit 2024-07-01 15:55:48	E-mail

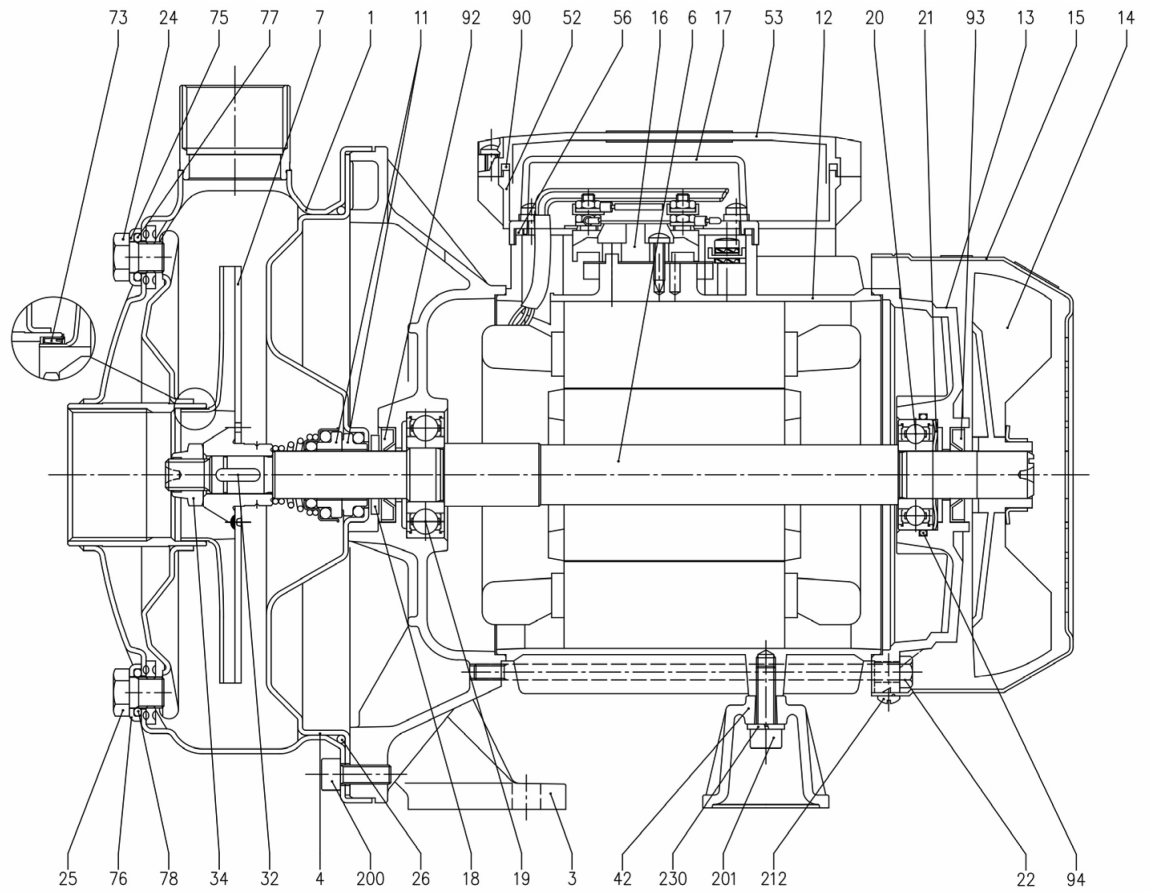


Dimensions in		mm							
1	A	208	Weight P&M	12 kg					
2	B	332							
3	C	181							
4	DNA	G 1 1/4							
5	H	229.5							
6	H1	106							
7	H2	123.5							
8	H3	207							
9	M	50							
10	M1	38							
11	N	120							
12	N1	160							
13	R	108							
14	V	M16x1.5							
15	W	92.5							

(1/3) Construction

Pump Name CDX 120/156 IE3

Customer	Date 2024-07-01	Company
Contact	Item no.	Issued by
Phone	Project	Phone
E-mail	Project ID Proiect redenumit 2024-07-01 15:55:48	E-mail



(2/3)

Construction

Pump Name CDX 120/156 IE3

Customer	Date 2024-07-01	Company
Contact	Item no.	Issued by
Phone	Project	Phone
E-mail	Project ID Proiect redenumit 2024-07-01 15:55:48	E-mail

N°	PART NAME	MATERIAL	Q.TY
1	Casing	AISI 304 / AISI 316L [7]	1
3	Motor bracket	Aluminium	1
4	Casing cover	AISI 304 / AISI 316L [7]	1
6	Shaft with rotor	AISI 303 / AISI 316L [7] (Wet extension)	1
7	Impeller	AISI 304 / AISI 316L [7]	1
11	Mechanical seal [8]	Carbon/Ceramic/NBR	1
12	Motor frame with stator	-	1
13	Motor cover	Aluminium	1
14	Fan	PA	1
15	Fan cover	Fe P04 Zincate	1
16	Terminal board	-	1
17	Terminal box cover [2]	Aluminium	1
18	Splash ring	NBR	1
19	Pump side ball bearing	-	1
20	Fan side ball bearing	-	1
21	Adjusting ring	Steel C70	1
22	Tie rod	Fe 420 Zincate	4
23	Capacitor [1]	-	1
24	Priming plug	AISI 303 / AISI 316 [7]	1

N°	PART NAME	MATERIAL	Q.TY
26	O-Ring [3]	NBR	1
32	Key	AISI 316	1
34	Impeller nut	AISI 304 / AISI 316 [7]	1
42	Motor support	Aluminium	1
52	Terminal box [1]	ABS class V0	1
53	Terminal box cover [5]	ABS class V0	1
56	Box gasket	NBR	1
73	Casing ring [4]	AISI 304 / AISI 316L [7]	1
75	Washer	AISI 304	1
76	Washer	AISI 304	1
77	O-Ring [3]	NBR	1
78	O-Ring [3]	NBR	1
90	Terminal box cover gasket [6]	NBR	1
92	Lip seal	-	1
93	Lip seal	-	1
94	O-Ring [9]	NBR	1
110	Protector [1]	-	1
200	Screw	Stainless steel A2 UNI7323	8
201	Screw	Zincate Steel	4
212	Screw	Zincate Steel	1

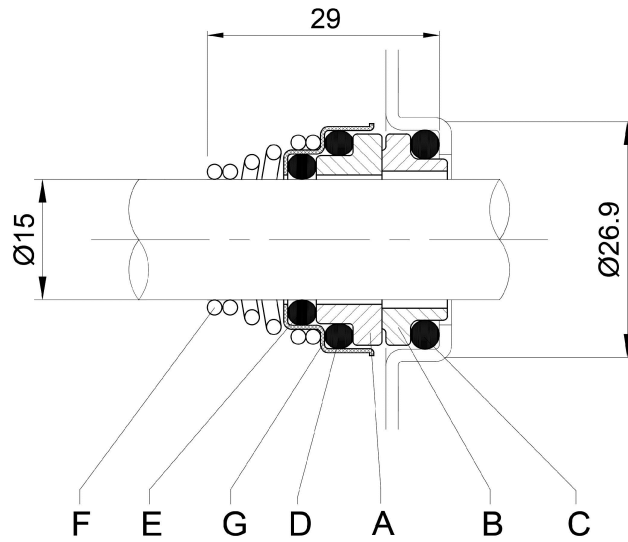
- [1] Only for single phase
- [2] Only for three phase
- [3] FPM for H-HS-HW-HSW
EPDM for E and Special Mechanical Seal
- [4] NBR for CDX 70/076-70/106-70/156
FPM for H-HS-HW-HSW version of the CDX 70/076-70/106-70/156
- [5] With gasket in NBR only for version single phase CDXM 70/076, 70/106, 70/156, 120/106, 120/156, 200/156
- [6] Only for version single phase CDXM 120/206, 200/206
- [7] Only for "L" version
- [8] See CONSTRUCTION 3
- [9] Only for CDX 70/156, CDX 120/156, CDX 200/156 (three phase)

(3/3)

Construction

Pump Name CDX 120/156 IE3

Customer	Date 2024-07-01	Company
Contact	Item no.	Issued by
Phone	Project	Phone
E-mail	Project ID Proiect redenumit 2024-07-01 15:55:48	E-mail



REF	PART NAME	MATERIAL Standard and L version
A	Rotary seal ring	Ceramic
B	Stationary seal ring	Carbon graphite
C	O-Ring	NBR
D	O-Ring	NBR
E	O-Ring	NBR
F	Self-driving spring	AISI 316
G	Frame	AISI 304