

Technical Data

Pump Name

GS4 150-400-411/M/75

| | | | |
|----------|------------|--------------------------------------|-----------|
| Customer | Date | 2024-06-14 | Company |
| Contact | Item no. | | Issued by |
| Phone | Project | | Phone |
| E-mail | Project ID | Proiect redenumit 2024-06-14 18:50:3 | E-mail |

Requested data

| | | | | |
|---|---------------------------|-------------------------|--------------------|----------------|
| 1 | Pump type | End Suction Volute Pump | Fluid | Water |
| 2 | Number of pumps / Reserve | 1 / 0 | Liquid temperature | °C 20 |
| 3 | Flow | m³/h | Kin. viscosity | mm²/s 1.005 |
| 4 | Head | m | Vapour pressure | bar 0.0234 |
| 5 | Geodetic head | m | PH value | |
| 6 | Inlet pressure (pin) | bar 0 | Density | kg/m³ 998.3 |
| 7 | Available system NPSH | | Solids | Weight % 0 |
| 8 | Ambient temperature | °C 20 | | |

Pump

| | | | | |
|----|----------------------|--------------------------------------|-----------------------------------|---------------------|
| 9 | Pump Name | GS4 150-400-411/M/75 | Frequency | Hz 50 |
| 10 | Design | End Suction Volute Pump | Installation type | with base, motor |
| 11 | Manufacturer | EBARA | Impeller Diameter | Max. mm 411 |
| 12 | Speed | rpm 1450 | | Designed mm 411 |
| 13 | No. of Stage | 1 | | Min. mm 319 |
| 14 | Connection | Suction side EN PN16 | Flow | Operating m³/h |
| 15 | Connection | Discharge side EN PN16 | | Max- m³/h 660 |
| 16 | Max Working Pressure | bar 16 | | Min- m³/h 71.2 |
| 17 | Shut-off head | bar 5.47 | Head | Operating m |
| 18 | Total weight | kg See the table of "Dimensions". | | - (Qmax.) m 31.3 |
| 19 | Shaft power | kW | | - (Qmin.) m 55.9 |
| 20 | | | Max. Shaft Power at max. impeller | kW 77.26 |
| 21 | Required pump NPSH | m | Efficiency | % |

Materials

| | | | |
|----|-----------------|-------------------|--|
| 22 | Casing | Cast iron | |
| 23 | Impeller | Ductile cast iron | |
| 24 | Shaft | Cr. Steel | |
| 25 | Case wear ring | Bronze | |
| 26 | O-ring | EPDM | |
| 27 | Mechanical seal | SiC/Carbon/EPDM | |

Motor

| | | | | |
|----|----------------------|---------------------------------------|------------------|-----------|
| 28 | Manufacturer | TECHTOP | Insulation class | F |
| 29 | Type | 280S_75_3_400 | Phases | 3~ |
| 30 | Specific design | TEFC/B3/IE3/TC / 50 Hz / Pole pairs 2 | Frame size | 280S_4P |
| 31 | Rated power | kW 75 | Weight | kg 672 |
| 32 | Number of poles | 4 | Electric voltage | V 400 |
| 33 | Speed | rpm 1480 | Electric current | A 125 |
| 34 | Degree of protection | IP55 | | |
| 35 | | | | |

Remarks

Performance Curve

Pump Name

GS4 150-400-411/M/75

| | | | |
|----------|------------|---------------------------------------|-----------|
| Customer | Date | 2024-06-14 | Company |
| Contact | Item no. | | Issued by |
| Phone | Project | | Phone |
| E-mail | Project ID | Project redenumit 2024-06-14 18:50:31 | E-mail |

Requested data

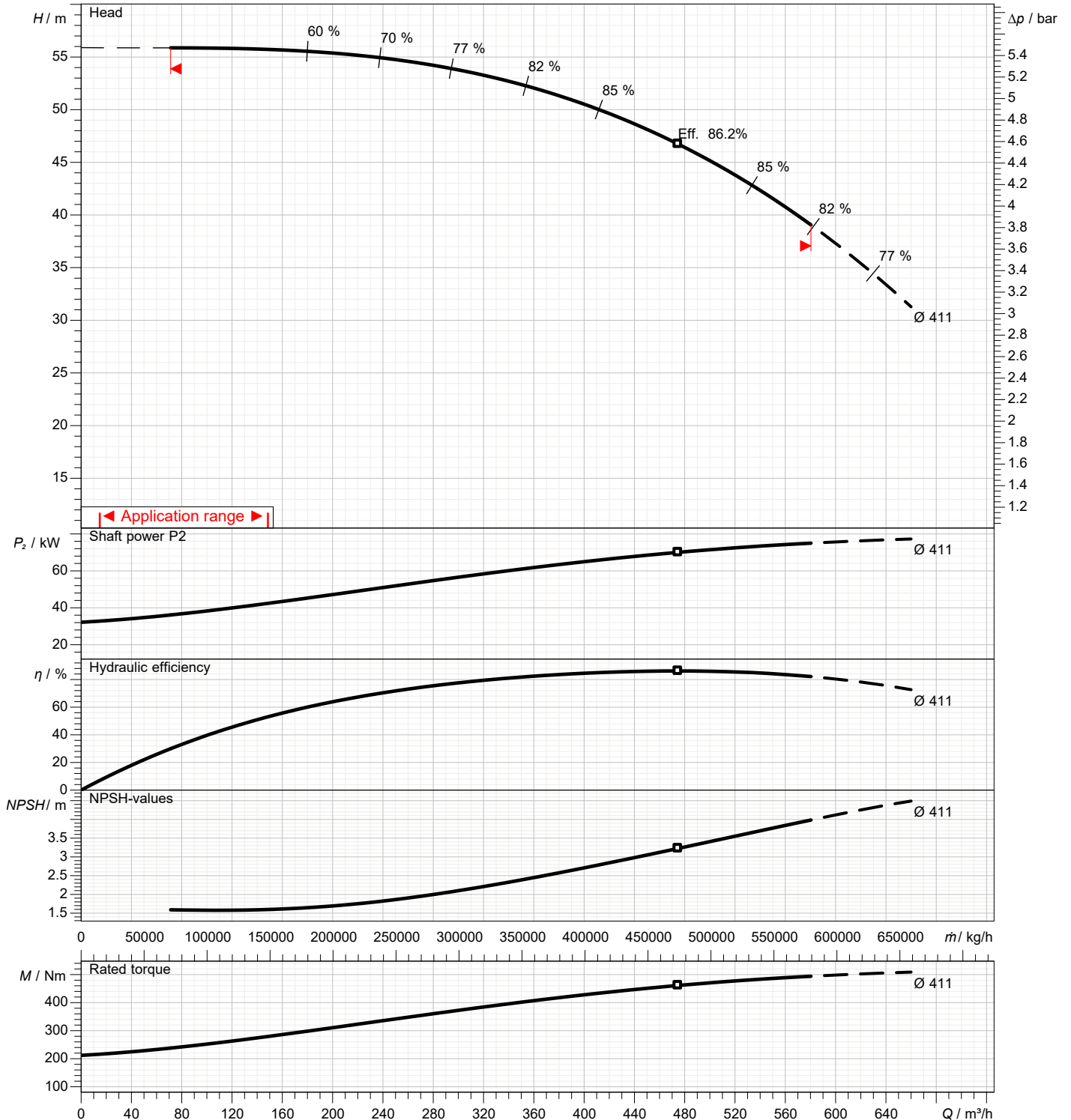
| | | | |
|---|---------------|------|--|
| 1 | Flow | m³/h | |
| 2 | Head | m | |
| 3 | Geodetic head | m | |

Pump

| | | | | | |
|----------------------------|------|-----|-----------------|-----|------|
| Operating flow | m³/h | | Frequency | Hz | 50 |
| Operating head | m | | Number of poles | | 4 |
| Impeller diameter designed | mm | 411 | Speed | rpm | 1450 |

Test standard: ISO 9906:2012 - Grade3B

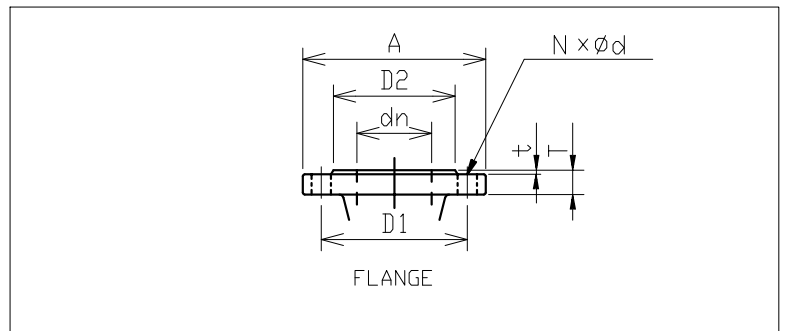
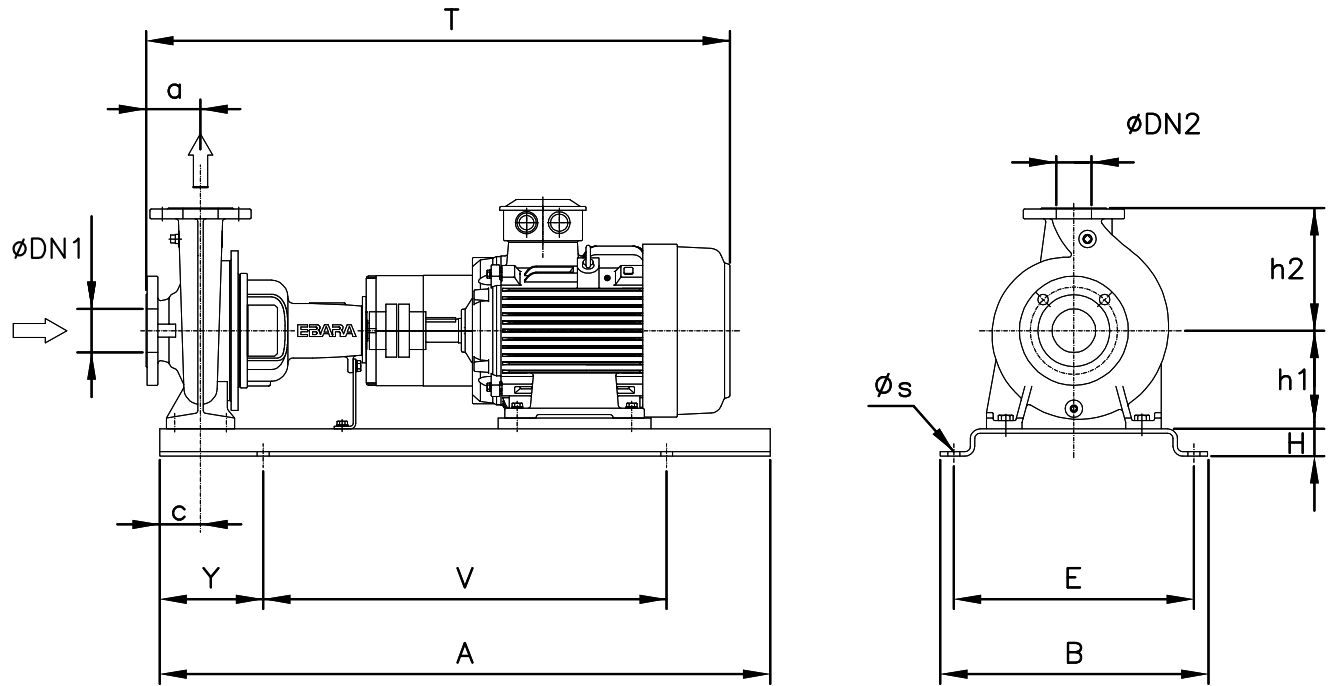
Water; 20°C; 998.3kg/m³; 1mm²/s



Dimensions

Pump name GS4 150-400-411/M/75

| | | |
|----------|--|-----------|
| Customer | Date 2024-06-14 | Company |
| Contact | Item no. | Issued by |
| Phone | Project | Phone |
| E-mail | Project ID Proiect redenumit 2024-06-14 18:50:31 | E-mail |



Total weight : 1133 kg

| Pump dimensions | | mm | Suction side | mm | Discharge side | mm |
|-----------------|------|----|--------------|---------|----------------|--------|
| a | 160 | | A | 340 | A | 285 |
| A | 1800 | | d | 23 | d | 23 |
| B | 850 | | D1 | 295 | D1 | 240 |
| c | 160 | | D2 | 266 | D2 | 211 |
| DN1 | 200 | | dn | 200 | dn | 150 |
| DN2 | 150 | | N | 12(Num) | N | 8(Num) |
| E | 780 | | t | 2 | t | 2 |
| H | 100 | | T | 30 | T | 26 |
| h1 | 315 | | | | | |
| h2 | 450 | | | | | |
| s | 26 | | | | | |
| T | 1764 | | | | | |
| V | 1200 | | | | | |
| Y | 300 | | | | | |

Construction

Pump name GS4 150-400-411/M/75

| | | |
|----------|--|-----------|
| Customer | Date 2024-06-14 | Company |
| Contact | Item no. | Issued by |
| Phone | Project | Phone |
| E-mail | Project ID Proiect redenumit 2024-06-14 18:50:31 | E-mail |