

# Technical Data

Pump Name

GSS 65-250 /7.5

Customer	Date	2024-06-16	Company
Contact	Item no.		Issued by
Phone	Project		Phone
E-mail	Project ID	Proiect redenumit 2024-06-16 12:31:28	E-mail

## Requested data

1	Pump type	End Suction Volute Pump	Fluid	Water
2	Number of pumps / Reserve	1 / 0	Liquid temperature	°C 20
3	Flow m³/h		Kin. viscosity	mm²/s 1.005
4	Head m		Vapour pressure	bar 0.0234
5	Geodetic head m		PH value	
6	Inlet pressure (pin) bar	0	Density	kg/m³ 998.3
7	Available system NPSH		Solids Weight %	0
8	Ambient temperature °C	20		

## Pump

9	Pump Name	GSS 65-250 /7.5	Frequency	Hz 50
10	Design	End Suction Volute Pump	Installation type	with ISO base, motor
11	Manufacturer	EBARA	Impeller Diameter	Max. mm 273
12	Speed rpm	1450		Designed mm 273
13	No. of Stage	1		Min. mm 215
14	Connection Suction side	EN PN16	Flow	Operating m³/h
15	Connection Discharge side	EN PN16		Max- m³/h 90
16	Max Working Pressure bar	16		Min- m³/h 12.1
17	Shut-off head bar	2.38	Head	Operating m
18	Total weight kg	See the table of "Dimensions".		- (Qmax.) m 19.1
19	Shaft power kW			- (Qmin.) m 24.4
20			Max. Shaft Power at max. impeller	kW 6.34
21	Required pump NPSH m		Efficiency	%

## Materials

22	Casing	SCS13	
23	Impeller	SCS13	
24	Shaft	SUS329J3L/S35C	
25	Case wear ring	SUS316	
26	O-ring	FKM	
27	Mechanical Seal	SiC/Carbon/FKM	

## Motor

28	Manufacturer	EBARA Standard	Insulation class	F
29	Type	132M_7.5_3_380	Phases	3~
30	Specific design	TEFC/B3/AESV1S / 50 Hz / Pole pairs 2	Frame size	132M
31	Rated power kW	7.5	Weight kg	78
32	Number of poles	4	Electric voltage V	380
33	Speed rpm	1460	Electric current A	15.4
34	Degree of protection	IP55		
35				

## Remarks

# Performance Curve

Pump Name

GSS 65-250 / 7.5

Customer	Date	2024-06-16	Company
Contact	Item no.		Issued by
Phone	Project		Phone
E-mail	Project ID	Proiect redenumit 2024-06-16 12:31:28	E-mail

**Requested data**

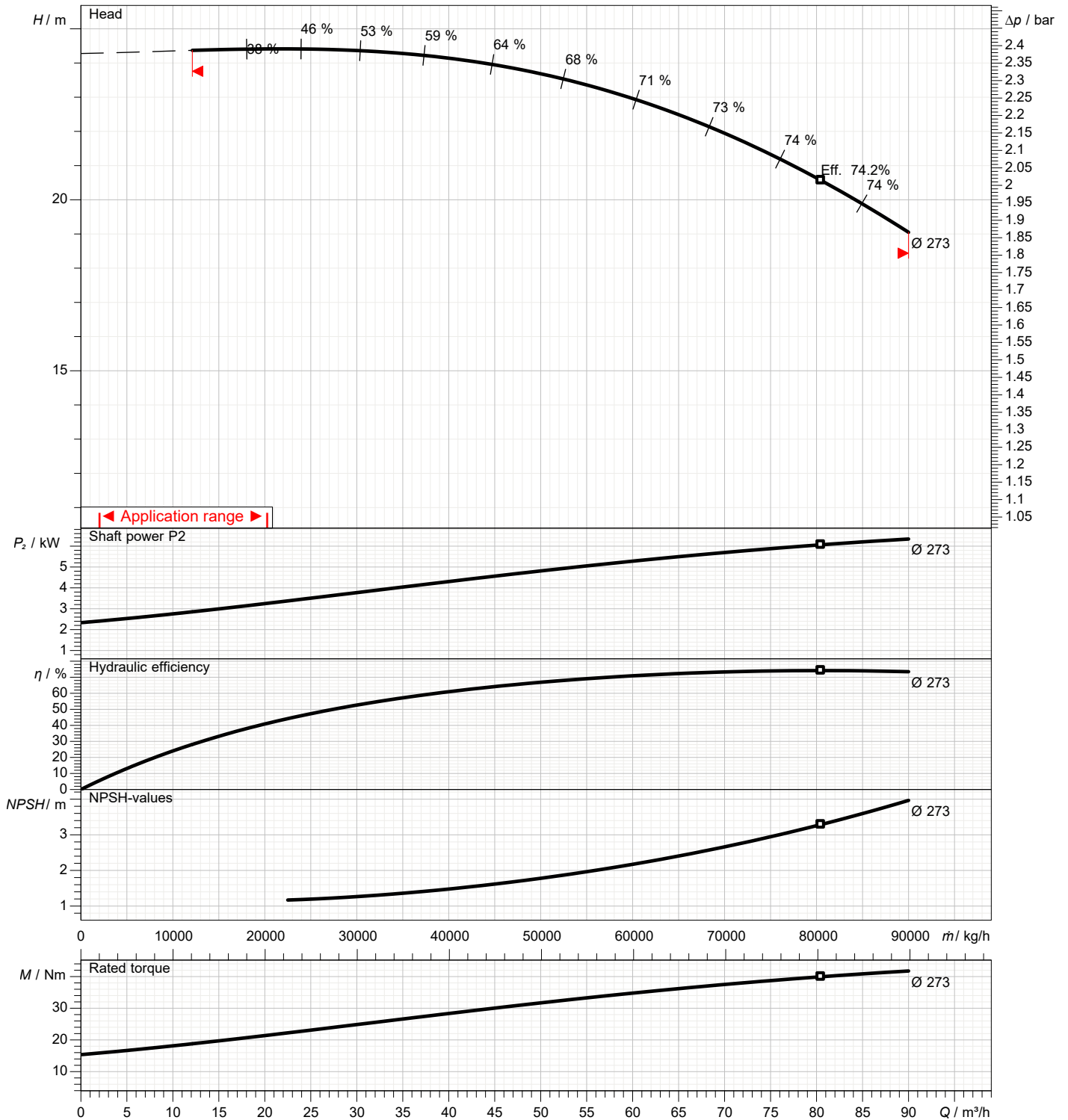
1	Flow	m³/h	
2	Head	m	
3	Geodetic head	m	

**Pump**

Operating flow	m³/h		Frequency	Hz	50
Operating head	m		Number of poles		4
Impeller diameter designed	mm	273	Speed	rpm	1450

Test standard: ISO 9906:2012 - Grade3B

Water; 20°C; 998.3kg/m³; 1mm²/s



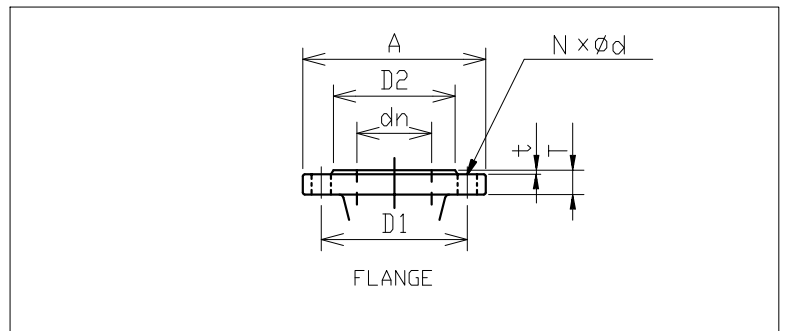
# Dimensions

Pump name GSS 65-250 /7.5

Customer	Date 2024-06-16	Company
Contact	Item no.	Issued by
Phone	Project	Phone
E-mail	Project ID Proiect redenumit 2024-06-16 12:31:28	E-mail



This base is not necessary to grout.  
Special base can be provided for grouting.



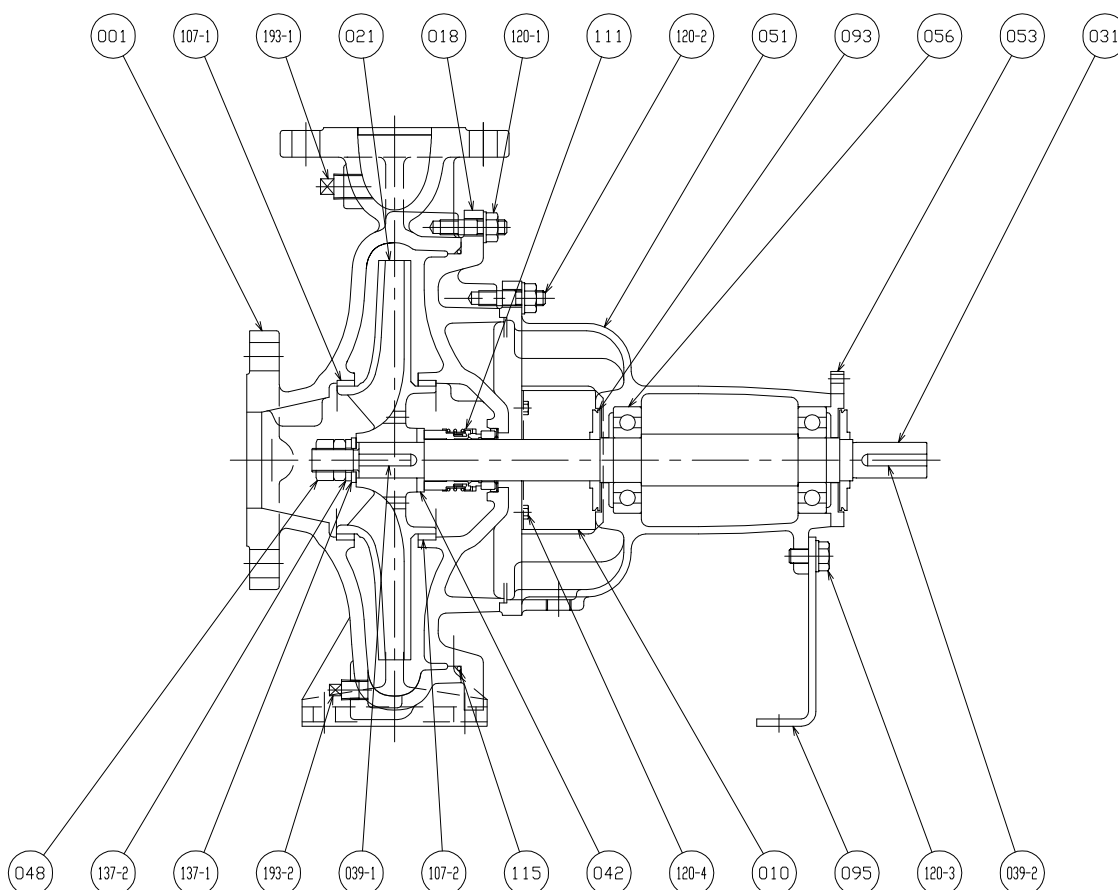
Total weight : 225 kg

Pump dimensions		mm	Suction side	mm	Discharge side	mm
a	100		A	200	A	185
BJ	90		d	18	d	18
BM1	740		D1	160	D1	145
BN1	190		D2	138	D2	122
BN2	190		dn	80	dn	65
BW	540		N	8(Num)	N	4(Num)
BY	490		t	2	t	2
dn1	80		T	20	T	18
dn2	65					
h1	250					
h2	250					
L	1077					
nxFd	4xM20					

# Construction

Pump name GSS 65-250 /7.5

Customer	Date 2024-06-16	Company
Contact	Item no.	Issued by
Phone	Project	Phone
E-mail	Project ID Proiect redenumit 2024-06-16 12:31:28	E-mail



(\*1) Duplex stainless steel is used for wetted part only. The remaining atmospheric side of shaft is made of carbon steel.

107-2	CASING RING	SUS316	X5CrNiMo17-12-2<1. 4401>	1					
107-1	CASING RING	SUS316	X5CrNiMo17-12-2<1. 4401>	1					
095	STAY	SPHC	-	1					
093	DEFLECTOR	-	-	2					
056	BALL BEARING	-	-	2					
053	BEARING COVER	FC150	EN-GJL-150<EN-JL1020>	1					
051	BEARING HOUSING	FC150	EN-GJL-150<EN-JL1020>	1					
048	IMPELLER NUT	SUS304	X5CrNi18-10<1. 4301>	1	193-2	PLUG	SUS304	X5CrNi18-10<1. 4301>	1
042	SPACER	SUS304	X5CrNi18-10<1. 4301>	1	193-1	PLUG	SUS304	X5CrNi18-10<1. 4301>	1
039-2	KEY	S50C	C50<1. 0540>	1	137-2	SPRING LOCK WASHER	SUS304	X5CrNi18-10<1. 4301>	1
039-1	KEY	SUS316	X5CrNiMo17-12-2<1. 4401>	1	137-1	PLAIN WASHER	SUS304	X5CrNi18-10<1. 4301>	1
031	SHAFT(*1)	SUS329J3L /S35C	X2CrNiMoN22-5-3<1. 4462> /C35	1	120-4	BOLT	SS	-	4
021	IMPELLER	SCS13	GX5CrNi19-10<1. 4308>	1	120-3	BOLT	SS	-	1
018	CASING COVER	SCS13	GX5CrNi19-10<1. 4308>	1	120-2	BOLT	SS	-	6
010	PROTECTOR	SPCC	DC01<1. 0330>	2	120-1	BOLT	SS	-	-
001	CASING	SCS13	GX5CrNi19-10<1. 4308>	1	115	O-RING	FKM	-	1
					111	MECHANICAL SEAL	-	-	1
No.	NAME OF PART	MATERIAL		Qty	No.	NAME OF PART	MATERIAL		Qty