

Technical Data

Pump Name

HVM 10-6N/2.2

| | | | |
|----------|------------|---------------------------------------|-----------|
| Customer | Date | 2024-06-16 | Company |
| Contact | Item no. | | Issued by |
| Phone | Project | | Phone |
| E-mail | Project ID | Proiect redenumit 2024-06-16 15:45:44 | E-mail |

Requested data

| | | | | |
|---|---------------------------|-----------------------------|--------------------|-------------|
| 1 | Pump type | MULTISTAGE CENRIFUGAL PUMPS | Fluid | Water |
| 2 | Number of pumps / Reserve | 1 / 0 | Liquid temperature | °C 20 |
| 3 | Flow m³/h | | Kin. viscosity | mm²/s 1.005 |
| 4 | Head m | | Vapour pressure | bar 0.0234 |
| 5 | Geodetic head m | | PH value | |
| 6 | Inlet pressure (pin) bar | 0 | Density | kg/m³ 998.3 |
| 7 | Available system NPSH | | Solids | Weight % 0 |
| 8 | Ambient temperature °C | 20 | | |

Pump

| | | | | |
|----|---------------------------|--------------------------------|-----------------------------------|------------------|
| 9 | Pump Name | HVM 10-6N/2.2 | Frequency | Hz 50 |
| 10 | Design | MULTISTAGE CENRIFUGAL PUMPS | Installation type | STANDARD |
| 11 | Manufacturer | EBARA | Impeller Diameter | Max. mm 101 |
| 12 | Speed rpm | 2850 | | Designed mm 101 |
| 13 | No. of Stage | 6 | | Min. mm 101 |
| 14 | Connection Suction side | ISO 228 | Flow | Operating m³/h |
| 15 | Connection Discharge side | ISO 228 | | Max- m³/h 15 |
| 16 | Max Working Pressure bar | | | Min- m³/h 3.6 |
| 17 | Shut-off head bar | 7.06 | Head | Operating m |
| 18 | Total weight kg | See the table of "Dimensions". | | - (Qmax.) m 17.1 |
| 19 | Shaft power kW | | | - (Qmin.) m 66.6 |
| 20 | | | Max. Shaft Power at max. impeller | kW 2.28 |
| 21 | Required pump NPSH m | | Efficiency | % |

Materials

| | | | | |
|----|--|--|--|--|
| 22 | | | | |
| 23 | | | | |
| 24 | | | | |
| 25 | | | | |
| 26 | | | | |
| 27 | | | | |

Motor

| | | | | |
|----|----------------------|------------------------------------|------------------|-------|
| 28 | Manufacturer | EPE Standard | Insulation class | |
| 29 | Type | TEFC_HVM 10-6N/2.2_230_Three Phase | Phases | 3~ |
| 30 | Specific design | IE2 / 50 Hz / Pole pairs 1 | Frame size | |
| 31 | Rated power kW | 2.2 | Weight | kg |
| 32 | Number of poles | 2 | Electric voltage | V 230 |
| 33 | Speed rpm | 2850 | Electric current | A 8.1 |
| 34 | Degree of protection | IP55 | | |
| 35 | | | | |

Remarks

Performance Curve

Pump Name

HVM 10-6N/2.2

| | | | |
|----------|------------|---------------------------------------|-----------|
| Customer | Date | 2024-06-16 | Company |
| Contact | Item no. | | Issued by |
| Phone | Project | | Phone |
| E-mail | Project ID | Project redenumit 2024-06-16 15:45:44 | E-mail |

Requested data

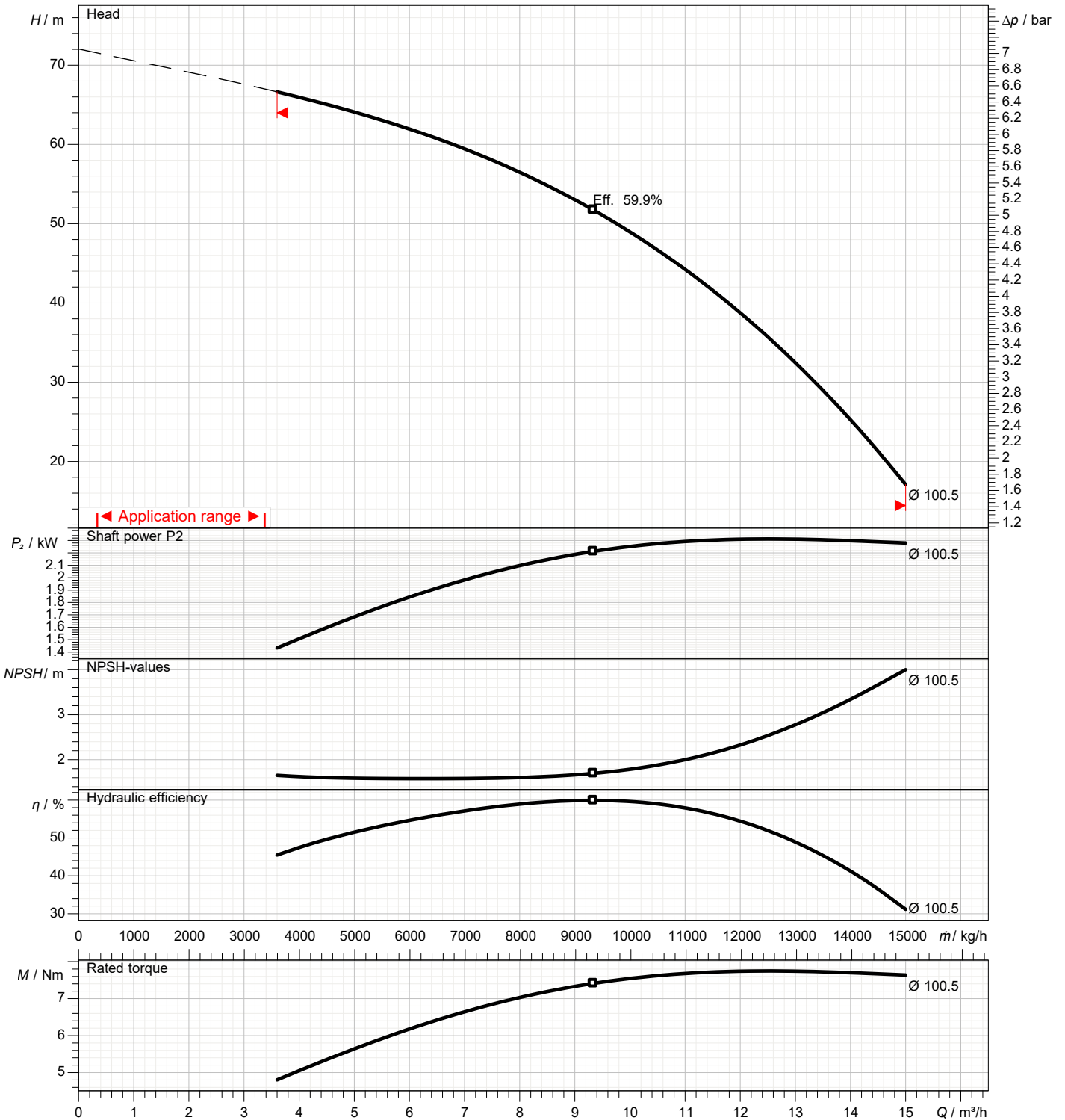
| | | | |
|---|---------------|------|--|
| 1 | Flow | m³/h | |
| 2 | Head | m | |
| 3 | Geodetic head | m | |

Pump

| | | | | | |
|----------------------------|------|-----|-----------------|-----|------|
| Operating flow | m³/h | | Frequency | Hz | 50 |
| Operating head | m | | Number of poles | | 2 |
| Impeller diameter designed | mm | 101 | Speed | rpm | 2850 |

Test standard: ISO 9906:2012 - Grade3B

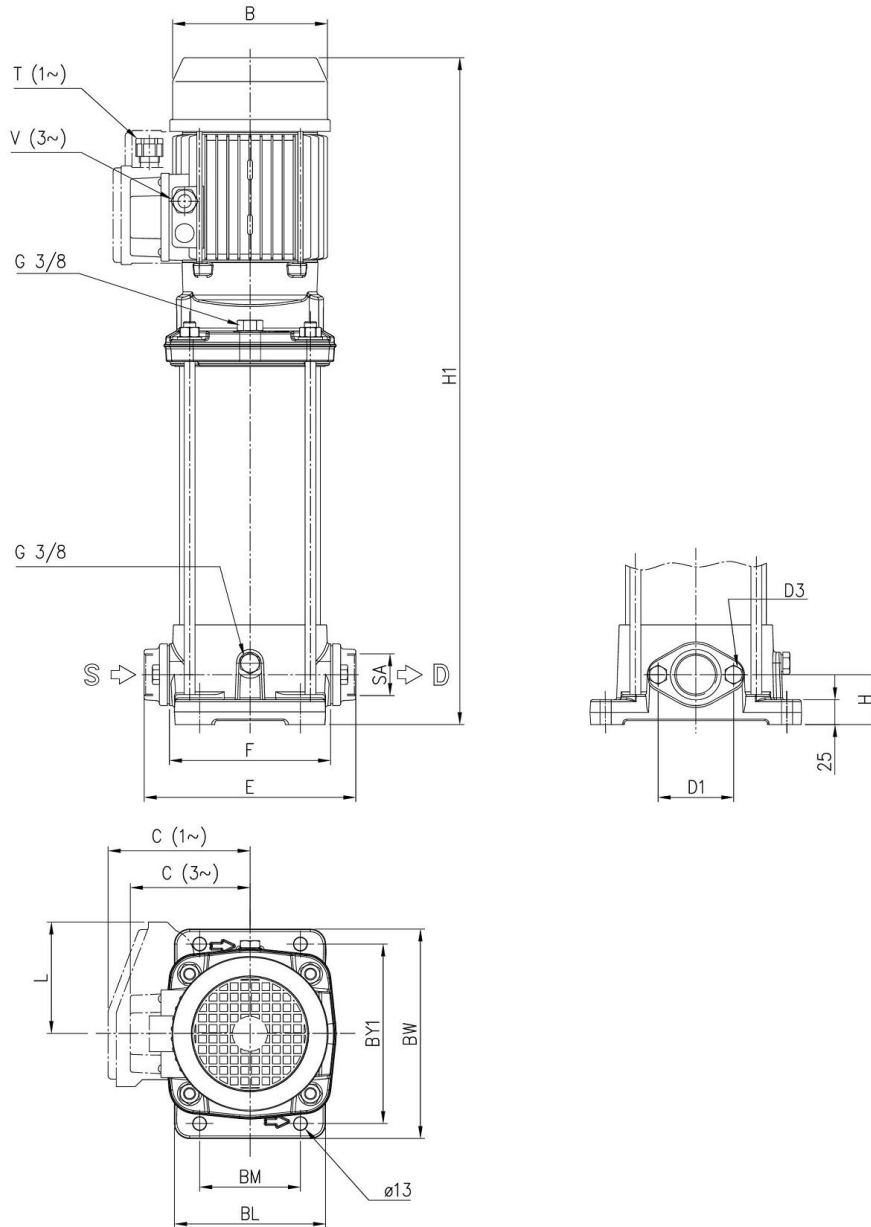
Water; 20°C; 998.3kg/m³; 1mm²/s



Dimensions

Pump name HVM 10-6N/2.2

| | | |
|----------|--|-----------|
| Customer | Date 2024-06-16 | Company |
| Contact | Item no. | Issued by |
| Phone | Project | Phone |
| E-mail | Project ID Proiect redenumit 2024-06-16 15:45:44 | E-mail |



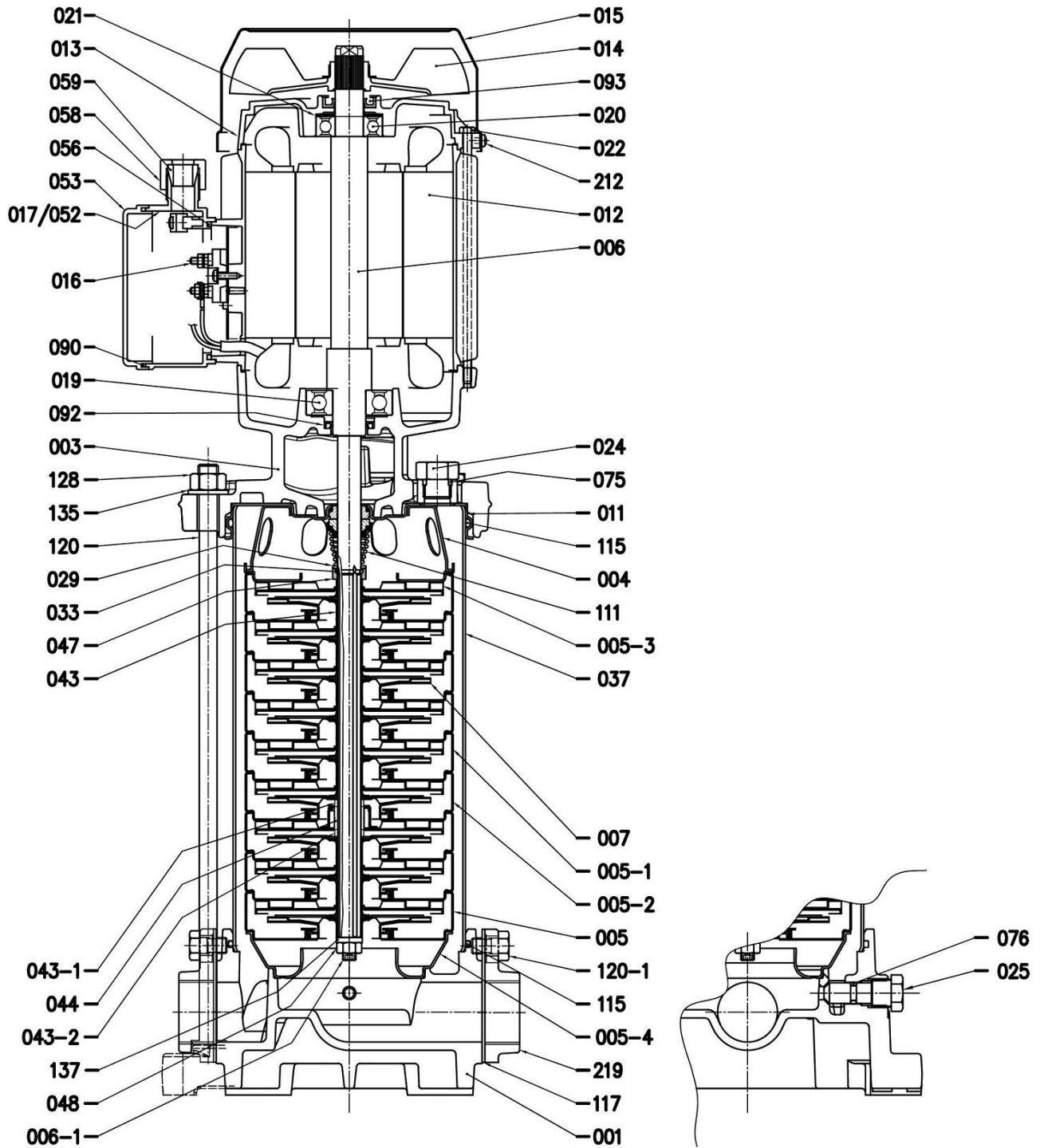
| Dimensions in | | mm | | | | | | |
|---------------|-----------|--------|--|--|--|--|--|--|
| 1 | B | 155 | | | | | | |
| 2 | BL | 185 | | | | | | |
| 3 | BM | 130 | | | | | | |
| 4 | BW | 250 | | | | | | |
| 5 | BY1 | 215 | | | | | | |
| 6 | C | 119 | | | | | | |
| 7 | D1 | 100 | | | | | | |
| 8 | D3 | M12 | | | | | | |
| 9 | E | 255 | | | | | | |
| 10 | F | 200 | | | | | | |
| 11 | H | 80 | | | | | | |
| 12 | H1 | 650 | | | | | | |
| 13 | SA | G1 1/2 | | | | | | |
| 14 | V | Pg 11 | | | | | | |
| 15 | Weight kg | 30.5 | | | | | | |

(1/3)

Construction

Pump name

| | | |
|----------|--|-----------|
| Customer | Date 2024-06-16 | Company |
| Contact | Item no. | Issued by |
| Phone | Project | Phone |
| E-mail | Project ID Proiect redenumit 2024-06-16 15:45:44 | E-mail |



(2/3)

Construction

Pump name

| | | | |
|----------|------------|---------------------------------------|-----------|
| Customer | Date | 2024-06-16 | Company |
| Contact | Item no. | | Issued by |
| Phone | Project | | Phone |
| E-mail | Project ID | Proiect redenumit 2024-06-16 15:45:44 | E-mail |

| N° | PART NAME | MATERIAL | DIMENSION | STANDARD | Q.TY |
|-------|-------------------------------|-----------------------------------|--------------|----------|------|
| 001 | Casing | Cast Iron EN-GJL 250 EN1561 | | | 1 |
| 003 | Bracket | Cast Iron EN-GJL 250 EN1561 | | | 1 |
| 004 | Discharge cover | EN 1.4301 (AISI 304) | | | 1 |
| 005 | Intermediate casing (suction) | EN 1.4301 (AISI 304)+PTFE | | | 1 |
| 005-1 | Intermediate casing | EN 1.4301 (AISI 304)+PTFE | | | [1] |
| 005-2 | Intermediate casing (bearing) | EN 1.4301 (AISI 304)+PTFE+Ceramic | | | [1] |
| 005-3 | Discharge casing | EN 1.4301 (AISI 304)+PTFE | | | 1 |
| 005-4 | Suction baffle | EN 1.4301 (AISI 304) | | | 1 |
| 006 | Shaft with rotor | - | | | 1 |
| 006-1 | Pump Shaft | EN 1.4301 (AISI 304) | | | 1 |
| 007 | Impeller | EN 1.4301 (AISI 304) | | | [1] |
| 011 | Casing cover | EN 1.4301 (AISI 304) | | | 1 |
| 012 | Motor frame with stator | - | | | 1 |
| 013 | Motor cover | Aluminium | | | 1 |
| 014 | Fan | PA | | | 1 |
| 015 | Fan cover | Fe P04 Galvanized | | | 1 |
| 016 | Terminal board | - | | | 1 |
| 017 | Terminal box cover | Aluminium | | | [1] |
| 019 | Bearing | - | | | 1 |
| 020 | Bearing | - | | | 1 |
| 021 | Adjusting ring | Steel C70 | | | 1 |
| 022 | Tie rod | Fe 42 Galvanized | | | 4 |
| 024 | Plug | EN 1.4301 (AISI 304) | | | 1 |
| 025 | Plug | EN 1.4301 (AISI 304) | | | 1 |
| 029 | Washer for mechanical seal | EN 1.4301 (AISI 304) | | | 1 |
| 033 | Ring | EN 1.4301 (AISI 304) | | | 2 |
| 037 | Outer casing | EN 1.4301 (AISI 304) | | | 1 |
| 043 | Impeller spacer | EN 1.4301 (AISI 304) | | | [1] |
| 043-1 | Shaft sleeve (adjustment) [1] | EN 1.4301 (AISI 304) | | | [1] |
| 043-2 | Shaft sleeve (adjustment) [1] | EN 1.4301 (AISI 304) | | | [1] |
| 044 | Shaft sleeve (bearing) | EN 1.4460 (AISI 329) | | | [1] |
| 047 | Ring holder | EN 1.4301 (AISI 304) | | | 1 |
| 048 | Nut | EN 1.4301 (AISI 304) | M8 | UNI 5588 | 1 |
| 052 | Capacitor box [2] | ABS | | | [1] |
| 053 | Capacitor box cover [2] | ABS | | | [1] |
| 056 | Box gasket | NBR | | | 1 |
| 058 | Ring nut | - | | | [1] |
| 059 | Conic gasket | NBR | | | [1] |
| 075 | O-ring | NBR | 13.2x2.62 | OR 117 | 1 |
| 076 | O-ring | NBR | 7.59x2.62 | OR 3030 | 1 |
| 090 | Cover box gasket | NBR | | | [1] |
| 092 | Lip seal | 0.65-0.9 kW | - | 17x32x6 | 1 |
| | | 1.5-2.2 kW | - | 20x30x4 | 1 |
| | | 2.2M-3 kW | - | 25x40x7 | 1 |
| 093 | Lip seal | 0.65-0.9 kW | - | 15x30x5 | 1 |
| | | 1.5-2.2 kW | - | 17x32x7 | 1 |
| | | 2.2M-3 kW | - | 25x40x7 | 1 |
| 111 | Mechanical seal | Ceramic/Carbon/NBR | see pag. 303 | | 1 |
| 115 | O-ring | NBR | 139.3x3.53 | OR 4550 | 2 |
| 117 | Flange gasket | EPDM | | | 2 |
| 120 | Tie rod | Fe 42 Galvanized | | | 4 |
| 120-1 | Screw for counterflange | Galvanized steel | | | 4 |
| 128 | Nut for tie rod | Galvanized steel | M12 | UNI 5588 | 4 |
| 135 | Washer | Galvanized steel | 13x24x2.5 | UNI 6592 | 4 |
| 137 | Shaft washer | EN 1.4301 (AISI 304) | | | 1 |
| 212 | Screw for fan cover | Galvanized steel | | | 4 |
| 219 | Counter flange | Galvanized steel | | | 2 |

Counterflange kit on request

[1] See CONSTRUCTION 3

[2] Only for single phase

(3/3)

Construction

Pump name

| | | | |
|----------|------------|---------------------------------------|-----------|
| Customer | Date | 2024-06-16 | Company |
| Contact | Item no. | | Issued by |
| Phone | Project | | Phone |
| E-mail | Project ID | Proiect redenumit 2024-06-16 15:45:44 | E-mail |

QUANTITY FOR MODEL

| Model | 005-1 | 005-2 | 007 | 017 | 043 | 043-1 | 043-2 | 044 | 052 | 053 | 058 | 059 | 090 |
|-----------------|-------|-------|-----|-----|-----|-------|-------|-----|-----|-----|-----|-----|-----|
| HVH 3-3N/0.65 M | 1 | - | 3 | - | 4 | - | - | - | 1 | 1 | 1 | 1 | 1 |
| HVH 3-3N/0.65 | 1 | - | | 1 | 4 | - | - | - | - | - | - | - | - |
| HVH 3-4N/0.65 M | 2 | - | 4 | - | 6 | - | - | - | 1 | 1 | 1 | 1 | 1 |
| HVH 3-4N/0.65 | 2 | - | | 1 | 6 | - | - | - | - | - | - | - | - |
| HVH 3-5N/0.9 M | 3 | - | 5 | - | 8 | - | - | - | 1 | 1 | 1 | 1 | 1 |
| HVH 3-5N/0.9 | 3 | - | | 1 | 8 | - | - | - | - | - | - | - | - |
| HVH 3-6N/0.9 M | 4 | - | 6 | - | 10 | - | - | - | 1 | 1 | 1 | 1 | 1 |
| HVH 3-6N/0.9 | 4 | - | | 1 | 10 | - | - | - | - | - | - | - | - |
| HVH 3-7N/1.5 M | 4 | 1 | 7 | - | 10 | 1 | 1 | 1 | 1 | 1 | 1 | 1 | 1 |
| HVH 3-7N/1.5 | 4 | 1 | | 1 | 10 | 1 | 1 | 1 | - | - | - | - | - |
| HVH 3-8N/1.5 M | 5 | 1 | 8 | - | 12 | 1 | 1 | 1 | 1 | 1 | 1 | 1 | 1 |
| HVH 3-8N/1.5 | 5 | 1 | | 1 | 12 | 1 | 1 | 1 | - | - | - | - | - |
| HVH 3-9N/1.5 M | 6 | 1 | 9 | - | 14 | 1 | 1 | 1 | 1 | 1 | 1 | 1 | 1 |
| HVH 3-9N/1.5 | 6 | 1 | | 1 | 14 | 1 | 1 | 1 | - | - | - | - | - |
| HVH 5-3N/0.65 M | 1 | - | 3 | - | 4 | - | - | - | 1 | 1 | 1 | 1 | 1 |
| HVH 5-3N/0.65 | 1 | - | | 1 | 4 | - | - | - | - | - | - | - | - |
| HVH 5-4N/0.9 M | 2 | - | 4 | - | 6 | - | - | - | 1 | 1 | 1 | 1 | 1 |
| HVH 5-4N/0.9 | 2 | - | | 1 | 6 | - | - | - | - | - | - | - | - |
| HVH 5-5N/1.5 M | 3 | - | 5 | - | 8 | - | - | - | 1 | 1 | 1 | 1 | 1 |
| HVH 5-5N/1.5 | 3 | - | | 1 | 8 | - | - | - | - | - | - | - | - |
| HVH 5-6N/1.5 M | 4 | - | 6 | - | 10 | - | - | - | 1 | 1 | 1 | 1 | 1 |
| HVH 5-6N/1.5 | 4 | - | | 1 | 10 | - | - | - | - | - | - | - | - |
| HVH 5-7N/1.5 M | 4 | 1 | 7 | - | 10 | 1 | 1 | 1 | 1 | 1 | 1 | 1 | 1 |
| HVH 5-7N/1.5 | 4 | 1 | | 1 | 10 | 1 | 1 | 1 | - | - | - | - | - |
| HVH 5-8N/2.2 M | 5 | 1 | 8 | - | 12 | 1 | 1 | 1 | 1 | 1 | 1 | 1 | 1 |
| HVH 5-8N/2.2 | 5 | 1 | | 1 | 12 | 1 | 1 | 1 | - | - | - | - | - |
| HVH 5-9N/2.2 M | 6 | 1 | 9 | - | 14 | 1 | 1 | 1 | 1 | 1 | 1 | 1 | 1 |
| HVH 5-9N/2.2 | 6 | 1 | | 1 | 14 | 1 | 1 | 1 | - | - | - | - | - |
| HVH 10-3N/1.5 M | 1 | - | 3 | - | 4 | - | - | - | 1 | 1 | 1 | 1 | 1 |
| HVH 10-3N/1.5 | 1 | - | | 1 | 4 | - | - | - | - | - | - | - | - |
| HVH 10-4N/1.5 M | 2 | - | 4 | - | 6 | - | - | - | 1 | 1 | 1 | 1 | 1 |
| HVH 10-4N/1.5 | 2 | - | | 1 | 6 | - | - | - | - | - | - | - | - |
| HVH 10-5N/2.2 M | 3 | - | 5 | - | 8 | - | - | - | 1 | 1 | 1 | 1 | 1 |
| HVH 10-5N/2.2 | 3 | - | | 1 | 8 | - | - | - | - | - | - | - | - |
| HVH 10-6N/2.2 M | 3 | 1 | 6 | - | 8 | 1 | 1 | 1 | 1 | 1 | 1 | 1 | 1 |
| HVH 10-6N/2.2 | 3 | 1 | | 1 | 8 | 1 | 1 | 1 | - | - | - | - | - |
| HVH 10-7N/3 | 4 | 1 | 7 | 1 | 10 | 1 | 1 | 1 | - | - | - | - | - |
| HVH 10-8N/3 | 5 | 1 | 8 | 1 | 12 | 1 | 1 | 1 | - | - | - | - | - |