

Technical Data

Pump Name

IDROGO 40/86

Customer	Date	2024-07-02	Company
Contact	Item no.		Issued by
Phone	Project		Phone
E-mail	Project ID	Proiect redenumit 2024-07-02 22:34:28	E-mail

Requested data

1	Pump type		SUBMERSIBLE MULTISTAGE PUMPS	Fluid		Water
2	Number of pumps / Reserve		1 / 0	Liquid temperature	°C	20
3	Flow	m³/h		Kin. viscosity	mm²/s	1.005
4	Head	m		Vapour pressure	bar	0.0234
5	Geodetic head	m		PH value		
6	Inlet pressure (pin)	bar	0	Density	kg/m³	998.3
7	Available system NPSH			Solids	Weight %	0
8	Ambient temperature	°C	20			

Pump

9	Pump Name		IDROGO 40/86	Frequency	Hz	60
10	Design		SUBMERSIBLE MULTISTAGE PUMPS	Installation type		STANDARD
11	Manufacturer		EBARA	Impeller Diameter	Max. mm	90
12	Speed	rpm	3450		Designed mm	90
13	No. of Stage		4		Min. mm	90
14	Connection	Suction side		Flow	Operating m³/h	
15	Connection	Discharge side	UNI ISO 228		Max- m³/h	4.8
16	Max Working Pressure	bar			Min- m³/h	1.2
17	Shut-off head	bar	5.19	Head	Operating m	
18	Total weight	kg	See the table of "Dimensions".		- (Qmax.) m	15.5
19	Shaft power	kW			- (Qmin.) m	47.4
20				Max. Shaft Power at max. impeller	kW	
21	Required pump NPSH	m		Efficiency	%	

Materials

22	Impeller		PPE+PS Glass fibre reinforced		
23	Casing		AISI 304		
24	Shaft		AISI 431		
25					
26					
27					

Motor

28	Manufacturer		EPE Standard	Insulation class		F
29	Type		IDROGO M40/86_220_Single Phase	Phases		1~
30	Specific design		Submersible dry type / 60 Hz / Pole pairs 1	Frame size		
31	Rated power	kW	0.6	Weight	kg	
32	Number of poles		2	Electric voltage	V	220
33	Speed	rpm	3450	Electric current	A	5
34	Degree of protection		IP X8			
35						

Remarks

Performance Curve

Pump Name

IDROGO 40/86

Customer	Date	2024-07-02	Company
Contact	Item no.		Issued by
Phone	Project		Phone
E-mail	Project ID	Proiect redenumit 2024-07-02 22:34:28	E-mail

Requested data

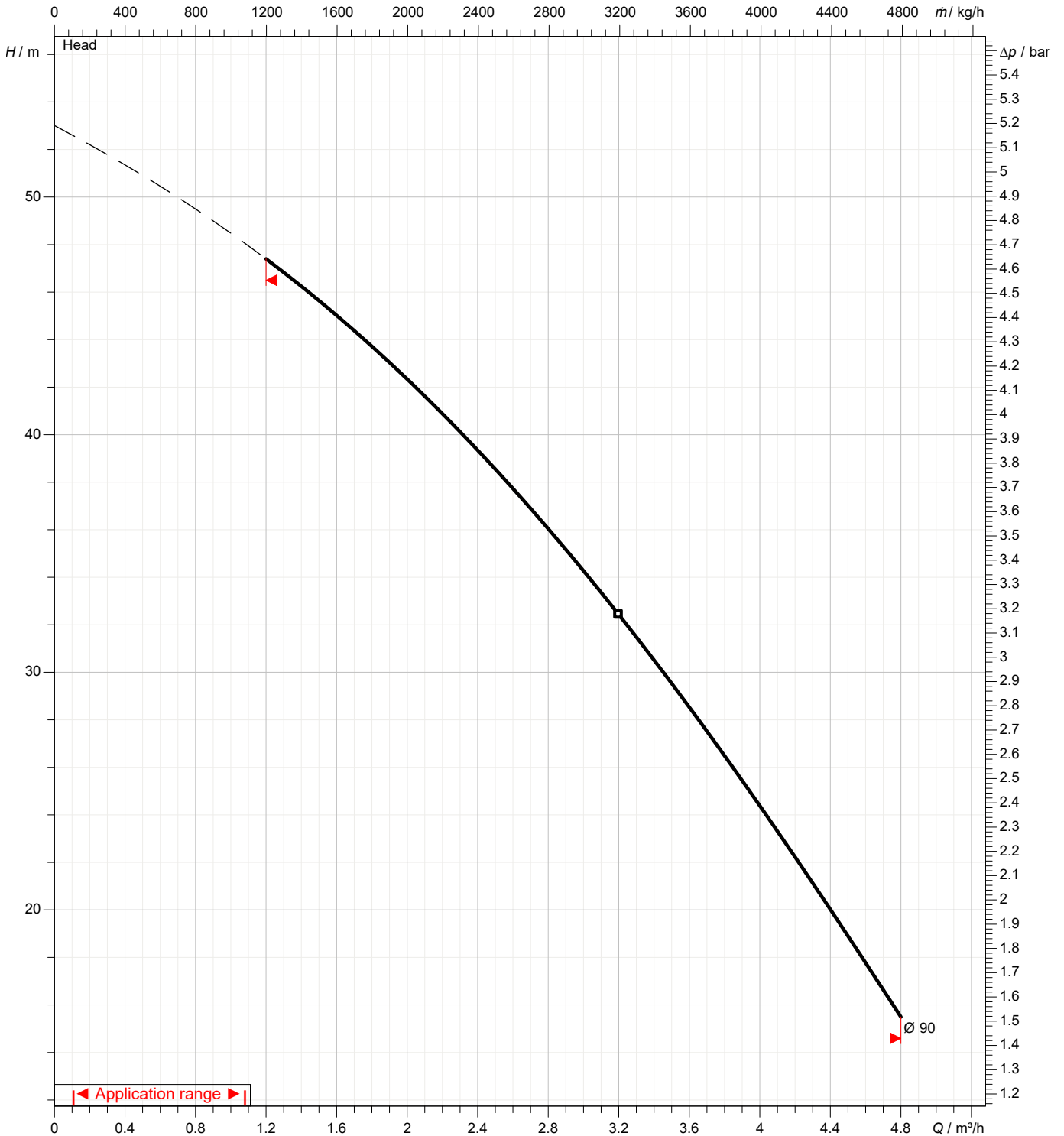
1	Flow	m³/h	
2	Head	m	
3	Geodetic head	m	

Pump

Operating flow	m³/h		Frequency	Hz	60
Operating head	m		Number of poles		2
Impeller diameter designed	mm	90	Speed	rpm	3450

Test standard: ISO 9906:2012 - Grade3B

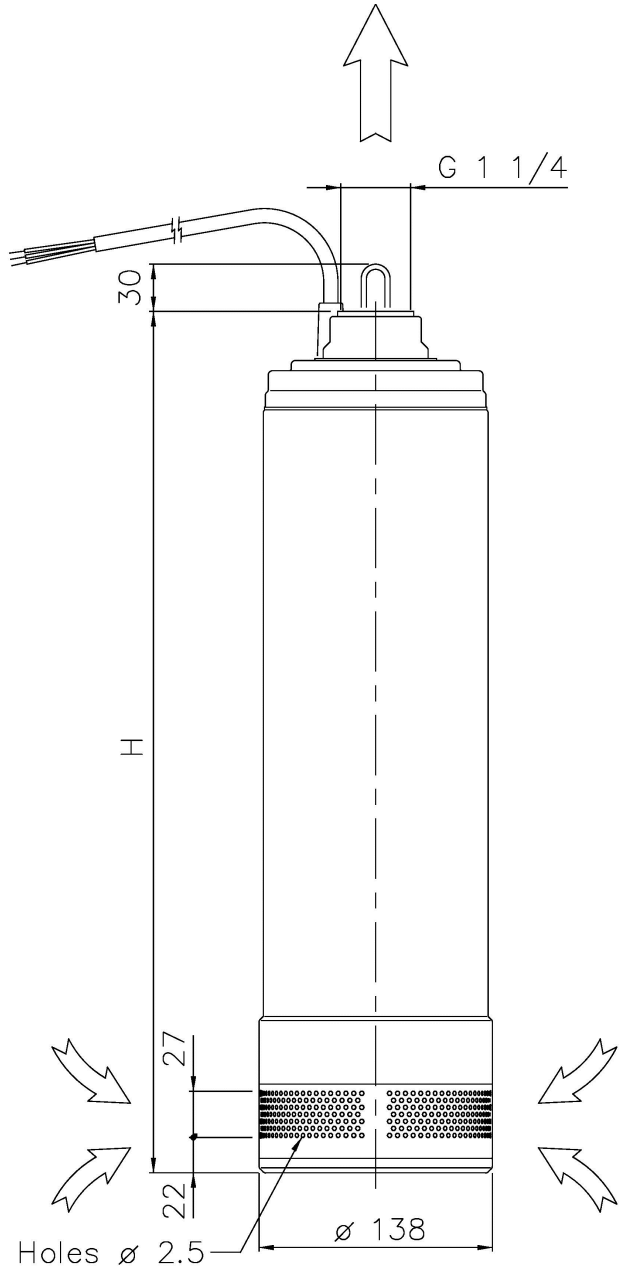
Water; 20°C; 998.3kg/m³; 1mm²/s



Dimensions

Pump name IDROGO 40/86

Customer	Date 2024-07-02	Company
Contact	Item no.	Issued by
Phone	Project	Phone
E-mail	Project ID Proiect redenumit 2024-07-02 22:34:28	E-mail



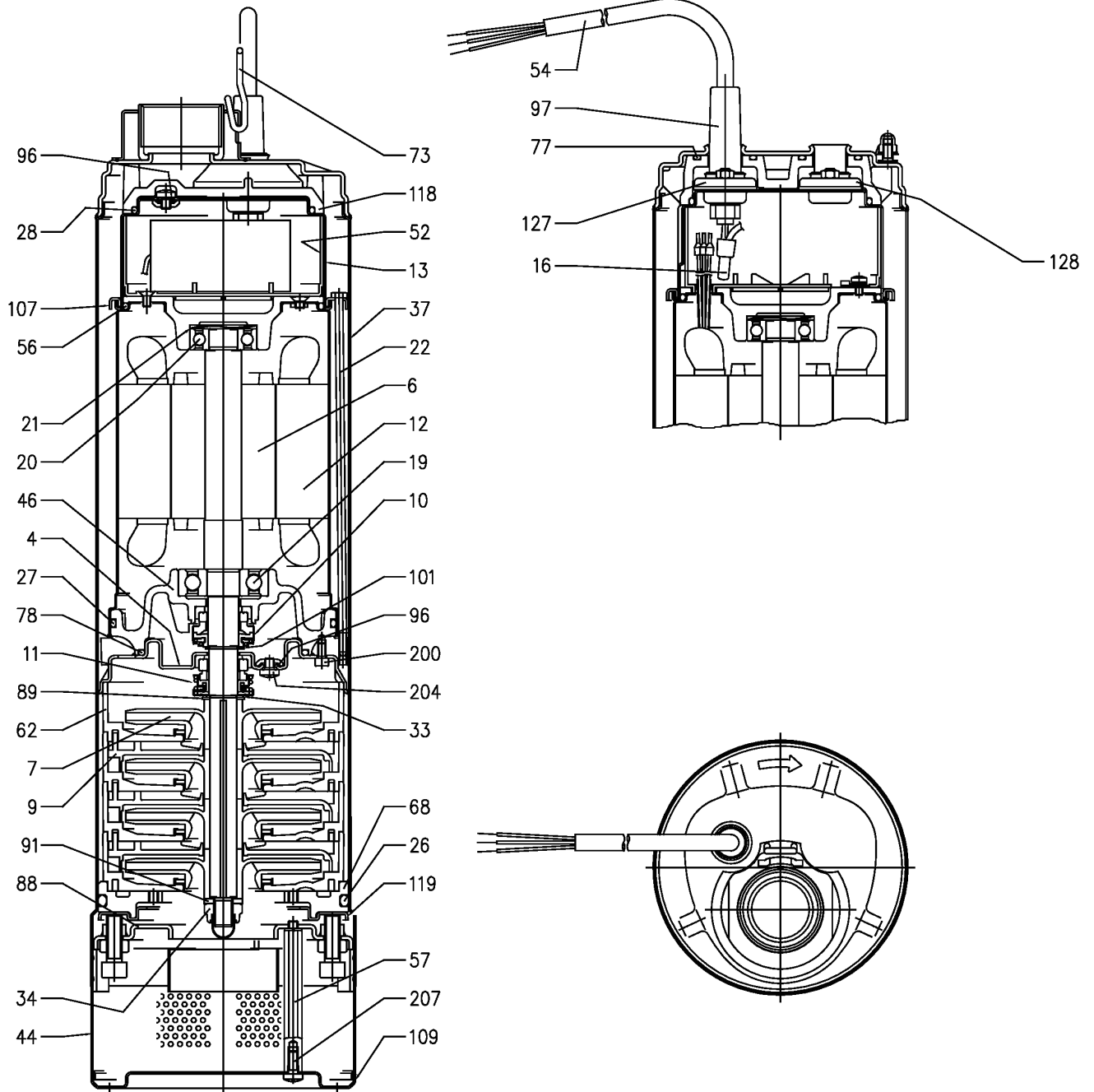
Dimensions in mm								
1	H	513						
2	Weight P&M	14 kg						
3								
4								
5								
6								
7								
8								
9								
10								
11								
12								
13								
14								
15								

(1/4)

Construction

Pump name IDROGO 40/86

Customer	Date 2024-07-02	Company
Contact	Item no.	Issued by
Phone	Project	Phone
E-mail	Project ID Proiect redenumit 2024-07-02 22:34:28	E-mail



(2/4)**Construction****Pump name IDROGO 40/86**

Customer	Date 2024-07-02	Company
Contact	Item no.	Issued by
Phone	Project	Phone
E-mail	Project ID Proiect redenumit 2024-07-02 22:34:28	E-mail

N°	PART NAME	MATERIAL	Q.TY
4	Casing cover	AISI 304	1
6	Shaft with rotor	AISI 431	1
7	Impeller	PPE+PS glass fibre reinforced	[2]
9	Diffuser	PPE+PS glass fibre reinforced	[2]
10	Motor side mechanical seal [1]	Carbon/Ceramic/NBR	1
11	Pump side mechanical seal [1]	SiC/Carbon/NBR	1
12	Motor frame with stator	-	1
13	Motor cover	AISI 304	1
16	Terminal	-	1
19	Lower side ball bearing	-	1
20	Upper side ball bearing	-	1
21	Adjusting ring	Steel C70	1
22	Tie rod	AISI 303	3
26	O ring	NBR	1
27	O ring	NBR	1
28	O ring	NBR	1
33	Seeger ring	AISI 304	1
34	Impeller nut	AISI 304	1
37	External pump casing	AISI 304	1
44	Strainer	AISI 304	1
46	Bearing housing	Brass	1
52	Terminal insulating box	PA66 class V-0	1
54	Power cable	-	1
56	"O" ring	NBR	1
57	Bolt	AISI 303	2
62	Stage housing	PPE+PS glass fibre reinforced	[2]
68	Lower spacer	PPE+PS glass fibre reinforced	1
73	Lifting holder	AISI 304	1
77	O ring	NBR	2
78	O ring	NBR	2
88	Fixing Flange	AISI 304	1
89	Washer	AISI 304	1
91	Washer	AISI 304	1
96	O ring	NBR	3
97	Cable entry	NBR	1
101	Seeger ring	AISI 420	1
107	Retainer ring	AISI 304	1
109	Strainer cover	AISI 304	1
118	Upper spacer	PPE+PS glass fibre reinforced	1
119	Flange	AISI 304	1
127	Cable connector	AISI 304	1
128	Cable connector	AISI 304	1
200	Screw	Stainless steel A2 UNI 7323	3
204	Screw	Stainless steel A2 UNI 7323	3
207	Screw	Stainless steel A2 UNI 7323	2

[1] See CONSTRUCTION 4

[2] See CONSTRUCTION 3

(3/4)

Construction

Pump name IDROGO 40/86

Customer	Date 2024-07-02	Company
Contact	Item no.	Issued by
Phone	Project	Phone
E-mail	Project ID Project redenumit 2024-07-02 22:34:28	E-mail

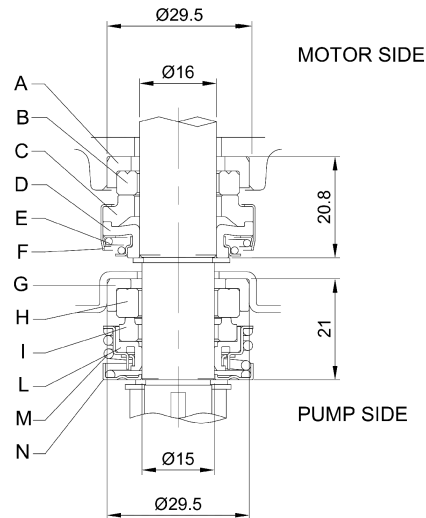
Pump type	POS. 7 Impeller	POS. 9 Diffuser	POS. 62 Stage housing
IDROGO 40/86	4	3	4
IDROGO 40/106	5	4	5
IDROGO 40/126	6	5	6
IDROGO 40/156	7	6	7
IDROGO 80/126	4	3	4
IDROGO 80/156	5	4	5
IDROGO 80/206	6	5	6

(4/4)

Construction

Pump name IDROGO 40/86

Customer	Date 2024-07-02	Company
Contact	Item no.	Issued by
Phone	Project	Phone
E-mail	Project ID Proiect redenumit 2024-07-02 22:34:28	E-mail



REF	PART NAME	MATERIAL
		Standard version
A	Rubber seat	NBR
B	Stationary ring	Ceramic
C	Rotary ring	Carbon
D	Rotary seal	NBR
E	Coil spring	AISI 304
F	Seal cover	AISI 304
G	Rubber seat	NBR
H	Stationary ring	Silicon carbide
I	Rotary ring	Carbon
L	Rotary seal	NBR
M	Coil spring	AISI 304
N	Seal cover	AISI 304