

Technical Data

Pump Name

IDROGO M40/86

Customer	Date	2024-07-02	Company
Contact	Item no.		Issued by
Phone	Project		Phone
E-mail	Project ID	Proiect redenumit 2024-07-02 22:34:28	E-mail

Requested data

1	Pump type		SUBMERSIBLE MULTISTAGE PUMPS	Fluid		Water
2	Number of pumps / Reserve		1 / 0	Liquid temperature	°C	20
3	Flow	m³/h		Kin. viscosity	mm²/s	1.005
4	Head	m		Vapour pressure	bar	0.0234
5	Geodetic head	m		PH value		
6	Inlet pressure (pin)	bar	0	Density	kg/m³	998.3
7	Available system NPSH			Solids	Weight %	0
8	Ambient temperature	°C	20			

Pump

9	Pump Name		IDROGO M40/86	Frequency	Hz	60
10	Design		SUBMERSIBLE MULTISTAGE PUMPS	Installation type		without Float Switch
11	Manufacturer		EBARA	Impeller Diameter	Max. mm	90
12	Speed	rpm	3450		Designed mm	90
13	No. of Stage		4		Min. mm	90
14	Connection	Suction side		Flow	Operating m³/h	
15	Connection	Discharge side	UNI ISO 228		Max- m³/h	4.8
16	Max Working Pressure	bar			Min- m³/h	1.2
17	Shut-off head	bar	5.19	Head	Operating m	
18	Total weight	kg	See the table of "Dimensions".		- (Qmax.) m	15.5
19	Shaft power	kW			- (Qmin.) m	47.4
20				Max. Shaft Power at max. impeller	kW	
21	Required pump NPSH	m		Efficiency	%	

Materials

22	Impeller		PPE+PS Glass fibre reinforced		
23	Casing		AISI 304		
24	Shaft		AISI 431		
25					
26					
27					

Motor

28	Manufacturer		EPE Standard	Insulation class		F
29	Type		IDROGO M40/86_220_Single Phase	Phases		1~
30	Specific design		Submersible dry type / 60 Hz / Pole pairs 1	Frame size		
31	Rated power	kW	0.6	Weight	kg	
32	Number of poles		2	Electric voltage	V	220
33	Speed	rpm	3450	Electric current	A	5
34	Degree of protection		IP X8			
35						

Remarks

Performance Curve

Pump Name

IDROGO M40/86

Customer	Date	2024-07-02	Company
Contact	Item no.		Issued by
Phone	Project		Phone
E-mail	Project ID	Proiect redenumit 2024-07-02 22:34:28	E-mail

Requested data

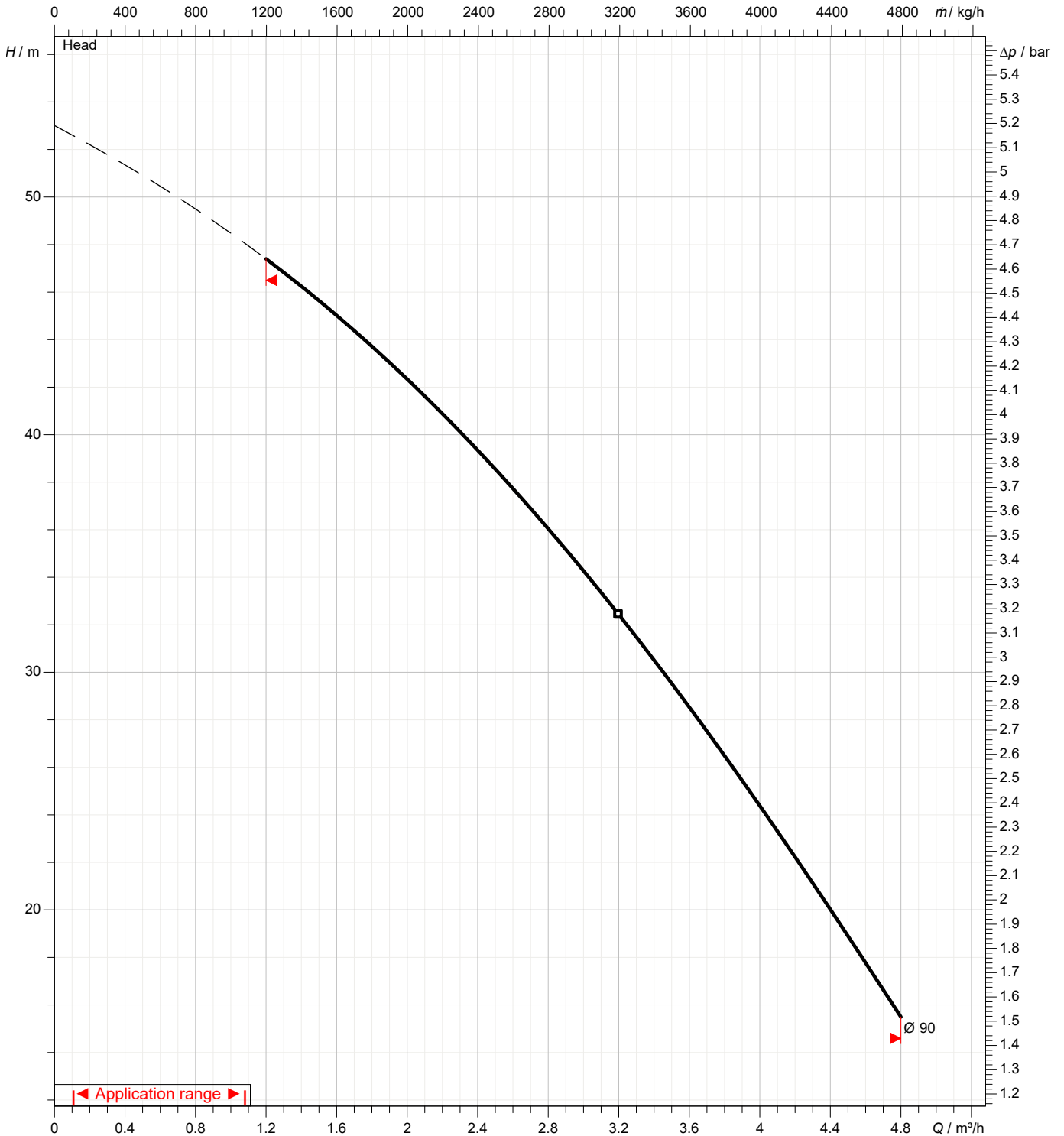
1	Flow	m³/h	
2	Head	m	
3	Geodetic head	m	

Pump

Operating flow	m³/h		Frequency	Hz	60
Operating head	m		Number of poles		2
Impeller diameter designed	mm	90	Speed	rpm	3450

Test standard: ISO 9906:2012 - Grade3B

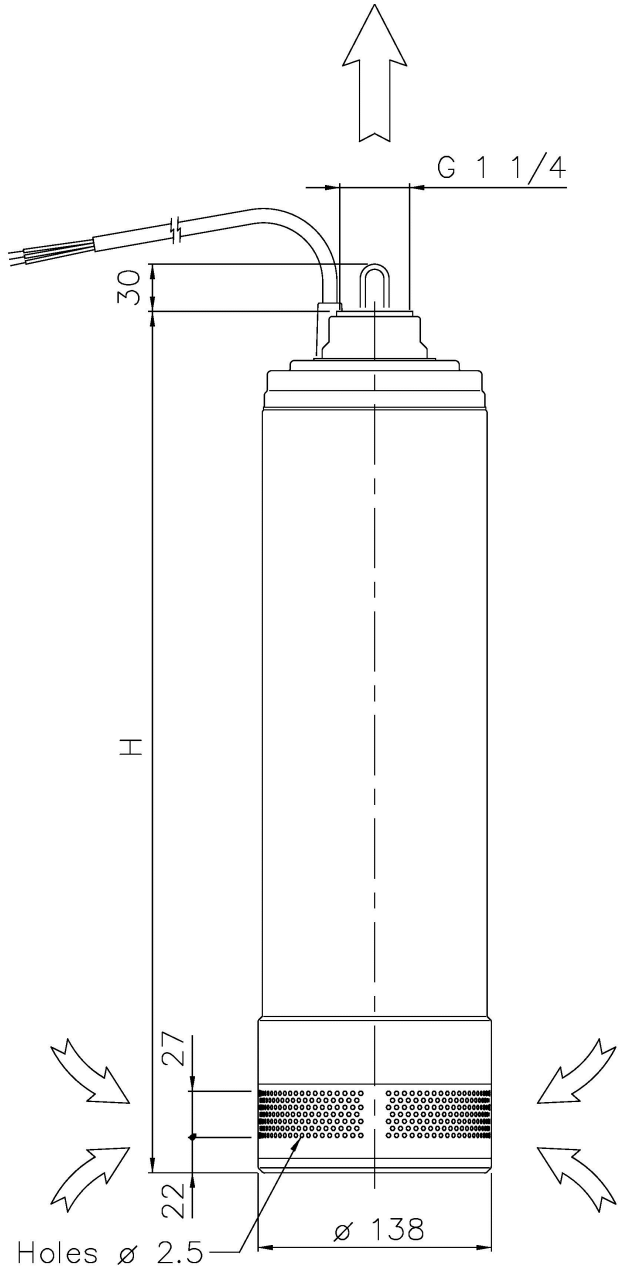
Water; 20°C; 998.3kg/m³; 1mm²/s



Dimensions

Pump name IDROGO M40/86

Customer	Date 2024-07-02	Company
Contact	Item no.	Issued by
Phone	Project	Phone
E-mail	Project ID Proiect redenumit 2024-07-02 22:34:28	E-mail



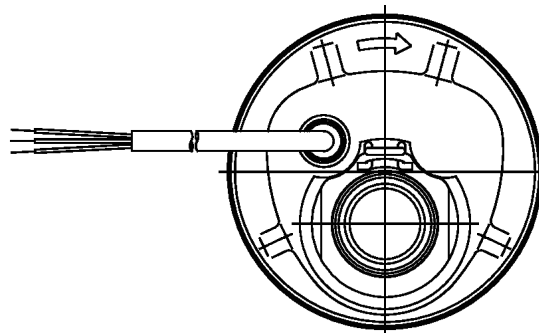
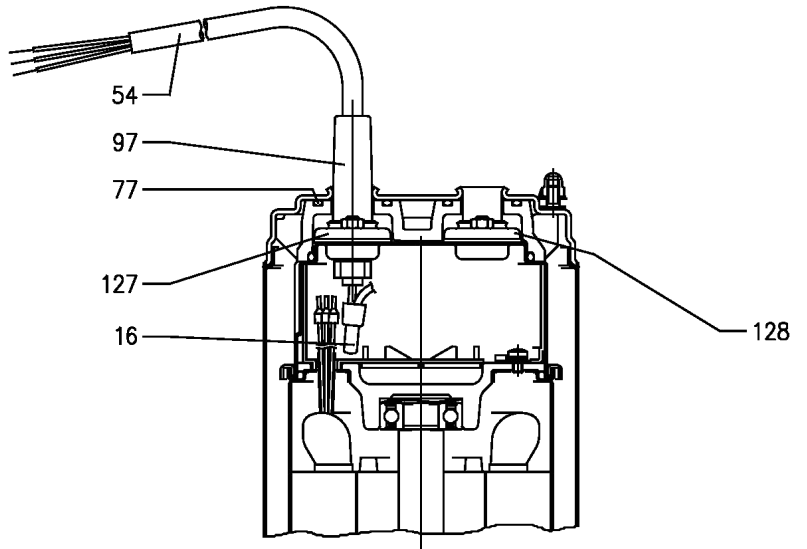
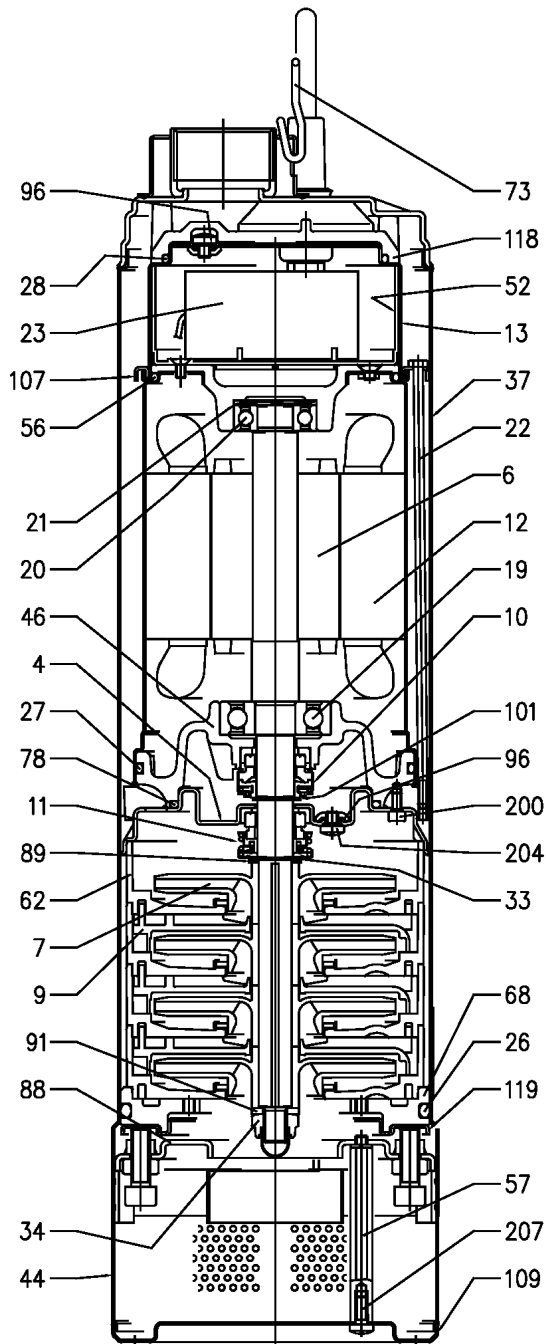
Dimensions in mm								
1	H	513						
2	Weight P&M	14,5 kg						
3								
4								
5								
6								
7								
8								
9								
10								
11								
12								
13								
14								
15								

(1/4)

Construction

Pump name IDROGO M40/86

Customer	Date	2024-07-02	Company
Contact	Item no.		Issued by
Phone	Project		Phone
E-mail	Project ID	Proiect redenumit 2024-07-02 22:34:28	E-mail



(2/4)**Construction****Pump name IDROGO M40/86**

Customer	Date	2024-07-02	Company
Contact	Item no.		Issued by
Phone	Project		Phone
E-mail	Project ID	Proiect redenumit 2024-07-02 22:34:28	E-mail

N°	PART NAME	MATERIAL	Q.TY
4	Casing cover	AISI 304	1
6	Shaft with rotor	AISI 431	1
7	Impeller	PPE+PS glass fibre reinforced	[2]
9	Diffuser	PPE+PS glass fibre reinforced	[2]
10	Motor side mechanical seal [1]	Carbon/Ceramic/NBR	1
11	Pump side mechanical seal [1]	SiC/Carbon/NBR	1
12	Motor frame with stator	-	1
13	Motor cover	AISI 304	1
16	Terminal	-	1
19	Lower side ball bearing	-	1
20	Upper side ball bearing	-	1
21	Adjusting ring	Steel C70	1
22	Tie rod	AISI 303	3
23	Capacitor	-	1
26	O ring	NBR	1
27	O ring	NBR	1
28	O ring	NBR	1
33	Seeger ring	AISI 304	1
34	Impeller nut	AISI 304	1
37	External pump casing	AISI 304	1
44	Strainer	AISI 304	1
46	Bearing housing	Brass	1
52	Terminal insulating box	PA66 class V-0	1
54	Power cable	-	1
56	"O" ring	NBR	1
57	Bolt	AISI 303	2
62	Stage housing	PPE+PS glass fibre reinforced	[2]
68	Lower spacer	PPE+PS glass fibre reinforced	1
73	Lifting holder	AISI 304	1
77	O ring	NBR	2
78	O ring	NBR	2
88	Fixing Flange	AISI 304	1
89	Washer	AISI 304	1
91	Washer	AISI 304	1
96	O ring	NBR	3
97	Cable entry	NBR	1
101	Seeger ring	AISI 420	1
107	Retainer ring	AISI 304	1
109	Strainer cover	AISI 304	1
118	Upper spacer	PPE+PS glass fibre reinforced	1
119	Flange	AISI 304	1
127	Cable connector	AISI 304	1
128	Cable connector	AISI 304	1
200	Screw	Stainless steel A2 UNI 7323	3
204	Screw	Stainless steel A2 UNI 7323	3
207	Screw	Stainless steel A2 UNI 7323	2

[1] See **CONSTRUCTION 4**[2] See **CONSTRUCTION 3**

(3/4)

Construction

Pump name IDROGO M40/86

Customer	Date 2024-07-02	Company
Contact	Item no.	Issued by
Phone	Project	Phone
E-mail	Project ID Project redenumit 2024-07-02 22:34:28	E-mail

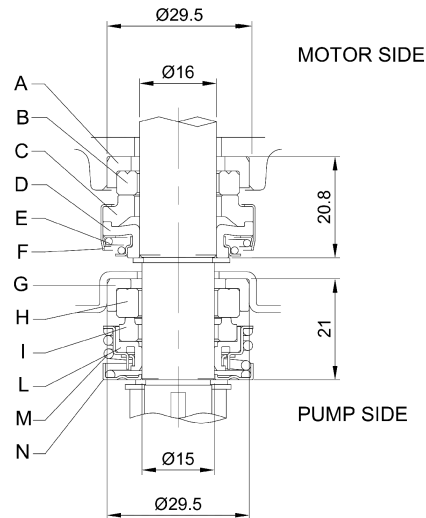
Pump type	POS. 7 Impeller	POS. 9 Diffuser	POS. 62 Stage housing
IDROGO 40/86	4	3	4
IDROGO 40/106	5	4	5
IDROGO 40/126	6	5	6
IDROGO 40/156	7	6	7
IDROGO 80/126	4	3	4
IDROGO 80/156	5	4	5
IDROGO 80/206	6	5	6

(4/4)

Construction

Pump name IDROGO M40/86

Customer	Date 2024-07-02	Company
Contact	Item no.	Issued by
Phone	Project	Phone
E-mail	Project ID Proiect redenumit 2024-07-02 22:34:28	E-mail



REF	PART NAME	MATERIAL
		Standard version
A	Rubber seat	NBR
B	Stationary ring	Ceramic
C	Rotary ring	Carbon
D	Rotary seal	NBR
E	Coil spring	AISI 304
F	Seal cover	AISI 304
G	Rubber seat	NBR
H	Stationary ring	Silicon carbide
I	Rotary ring	Carbon
L	Rotary seal	NBR
M	Coil spring	AISI 304
N	Seal cover	AISI 304