

Technical Data

Pump Name

JESM 6

| | | | |
|----------|------------|---------------------------------------|-----------|
| Customer | Date | 2024-06-16 | Company |
| Contact | Item no. | | Issued by |
| Phone | Project | | Phone |
| E-mail | Project ID | Proiect redenumit 2024-06-16 15:45:44 | E-mail |

Requested data

| | | | | |
|---|---------------------------|-------------------|--------------------|----------|
| 1 | Pump type | CENTRIFUGAL PUMPS | Fluid | Water |
| 2 | Number of pumps / Reserve | 1 / 0 | Liquid temperature | °C |
| 3 | Flow | m³/h | Kin. viscosity | mm²/s |
| 4 | Head | m | Vapour pressure | bar |
| 5 | Geodetic head | m | PH value | |
| 6 | Inlet pressure (pin) | bar | Density | kg/m³ |
| 7 | Available system NPSH | | Solids | Weight % |
| 8 | Ambient temperature | °C | | |

Pump

| | | | | | | |
|----|----------------------|-------------------|--------------------------------|-----------------------------------|-----------|------|
| 9 | Pump Name | JESM 6 | Frequency | Hz | 50 | |
| 10 | Design | CENTRIFUGAL PUMPS | Installation type | | STANDARD | |
| 11 | Manufacturer | EBARA | Impeller Diameter | Max. | mm | |
| 12 | Speed | rpm | | 3000 | Designed | mm |
| 13 | No. of Stage | | | 1 | Min. | mm |
| 14 | Connection | Suction side | UNI ISO 228 | Flow | Operating | |
| 15 | Connection | Discharge side | UNI ISO 228 | | Max- | m³/h |
| 16 | Max Working Pressure | bar | 6 | | Min- | m³/h |
| 17 | Shut-off head | bar | 3.53 | Head | Operating | |
| 18 | Total weight | kg | See the table of "Dimensions". | | - (Qmax.) | m |
| 19 | Shaft power | kW | | | - (Qmin.) | m |
| 20 | | | | Max. Shaft Power at max. impeller | kW | |
| 21 | Required pump NPSH | m | | Efficiency | % | |

Materials

| | | | | |
|----|----------|---------------------------------|--|--|
| 22 | Impeller | PPO mod. glass fibre reinforced | | |
| 23 | Casing | AISI 304 | | |
| 24 | Shaft | AISI 303 (Wet extension) | | |
| 25 | | | | |
| 26 | | | | |
| 27 | | | | |

Motor

| | | | | | |
|----|----------------------|----------------------------|------------------|------------------|----|
| 28 | Manufacturer | EPE Standard | Insulation class | F | |
| 29 | Type | TEFC_JES 6_230_Three Phase | Phases | 3~ | |
| 30 | Specific design | - / 50 Hz / Pole pairs 1 | Frame size | | |
| 31 | Rated power | kW | 0.45 | Weight | kg |
| 32 | Number of poles | | 2 | Electric voltage | V |
| 33 | Speed | rpm | 3000 | Electric current | A |
| 34 | Degree of protection | | IP 44 | | |
| 35 | | | | | |

Remarks

Performance Curve

Pump Name

JESM 6

| | | | |
|----------|------------|---------------------------------------|-----------|
| Customer | Date | 2024-06-16 | Company |
| Contact | Item no. | | Issued by |
| Phone | Project | | Phone |
| E-mail | Project ID | Proiect redenumit 2024-06-16 15:45:44 | E-mail |

Requested data

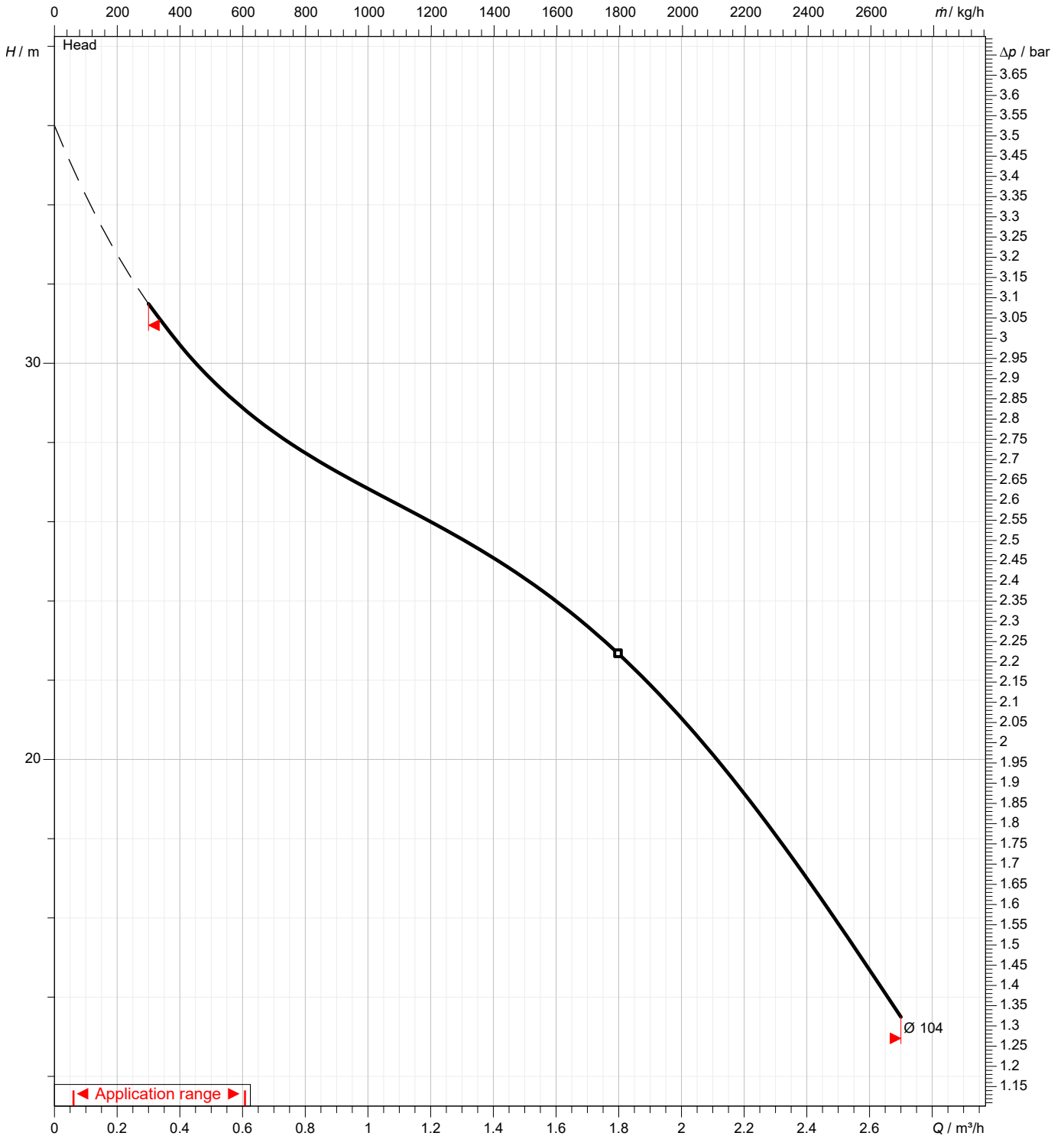
| | | | |
|---|---------------|------|--|
| 1 | Flow | m³/h | |
| 2 | Head | m | |
| 3 | Geodetic head | m | |

Pump

| | | | | | |
|----------------------------|------|-----|-----------------|-----|------|
| Operating flow | m³/h | | Frequency | Hz | 50 |
| Operating head | m | | Number of poles | | 2 |
| Impeller diameter designed | mm | 104 | Speed | rpm | 3000 |

Test standard: ISO 9906:2012 - Grade3B

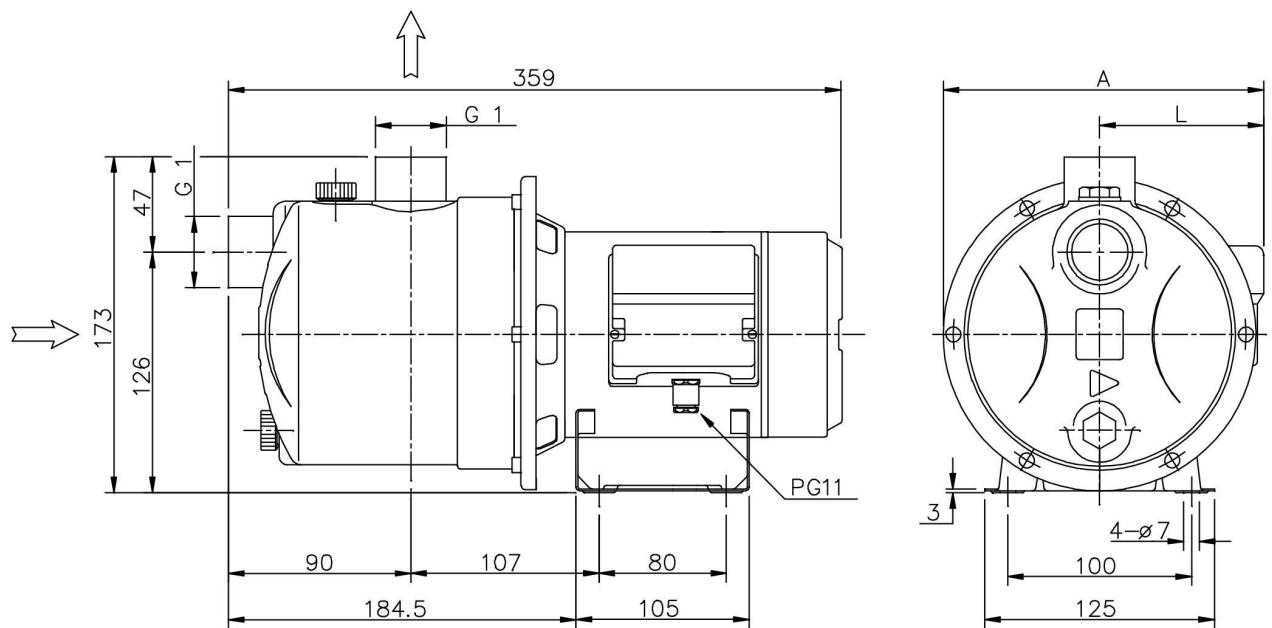
Water; 20°C; 998.3kg/m³; 1mm²/s



Dimensions

Pump Name JESM 6

| | | |
|----------|--|-----------|
| Customer | Date 2024-06-16 | Company |
| Contact | Item no. | Issued by |
| Phone | Project | Phone |
| E-mail | Project ID Proiect redenumit 2024-06-16 15:45:44 | E-mail |



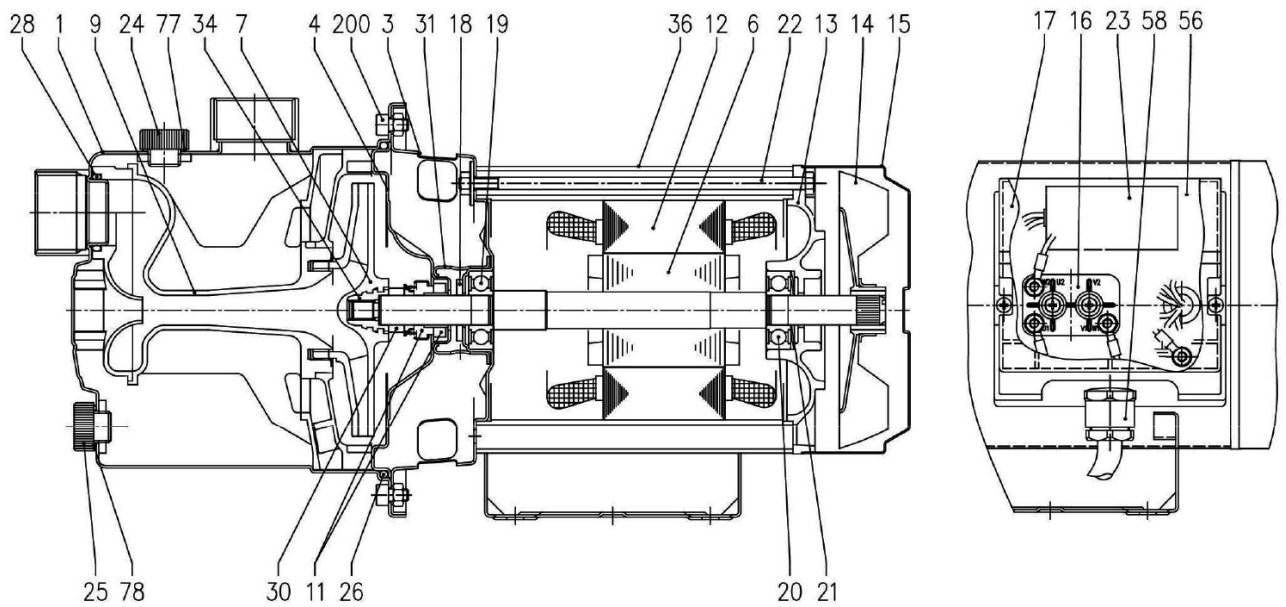
| Dimensions in | | mm | | | | | | |
|---------------|------------|--------|--|--|--|--|--|--|
| 1 | A | 181 | | | | | | |
| 2 | L | 96 | | | | | | |
| 3 | Weight P&M | 5.8 kg | | | | | | |
| 4 | | | | | | | | |
| 5 | | | | | | | | |
| 6 | | | | | | | | |
| 7 | | | | | | | | |
| 8 | | | | | | | | |
| 9 | | | | | | | | |
| 10 | | | | | | | | |
| 11 | | | | | | | | |
| 12 | | | | | | | | |
| 13 | | | | | | | | |
| 14 | | | | | | | | |
| 15 | | | | | | | | |

(1/3)

Construction

Pump Name JESM 6

| | | |
|----------|--|-----------|
| Customer | Date 2024-06-16 | Company |
| Contact | Item no. | Issued by |
| Phone | Project | Phone |
| E-mail | Project ID Proiect redenumit 2024-06-16 15:45:44 | E-mail |



(2/3)

Construction

Pump Name JESM 6

| | | | |
|----------|------------|---------------------------------------|-----------|
| Customer | Date | 2024-06-16 | Company |
| Contact | Item no. | | Issued by |
| Phone | Project | | Phone |
| E-mail | Project ID | Proiect redenumit 2024-06-16 15:45:44 | E-mail |

| N° | PART NAME | MATERIAL | Q.TY |
|-----|-------------------------|---------------------------------|------|
| 1 | Casing | AISI 304 | 1 |
| 3 | Motor bracket | AISI 304 | 1 |
| 4 | Casing cover | AISI 304 | 1 |
| 6 | Shaft with rotor | AISI 303 (Wet extension) | 1 |
| 7 | Impeller | PPO mod. glass fibre reinforced | 1 |
| 9 | Diffuser Venturi tube | PPO mod. glass fibre reinforced | 1 |
| 11 | Mechanical seal [3] | Carbon/Ceramic/NBR | 1 |
| 12 | Motor frame with stator | - | 1 |
| 13 | Motor cover | Aluminium | 1 |
| 14 | Fan | PA6 | 1 |
| 15 | Fan cover | Fe P04 Zincate | 1 |
| 16 | Terminal board | - | 1 |
| 17 | Terminal box cover | PA66 glass fibre reinforced | 1 |
| 18 | Splash ring | NBR | 1 |
| 19 | Pump side ball bearing | 6201 ZZ | 1 |
| 20 | Fan side ball bearing | 6201 ZZ | 1 |
| 21 | Adjusting ring | Steel C70 | 1 |
| 22 | Tie rod | Fe 42 Zincate | 4 |
| 23 | Capacitor [1] | - | 1 |
| 24 | Priming plug | PA6 | 1 |
| 25 | Drain plug | PA6 | 1 |
| 26 | O-ring | NBR | 1 |
| 28 | O-ring | NBR | 1 |
| 30 | Mechanical seal spacer | Brass | 1 |
| 31 | Thrust flange | AISI 304 | 1 |
| 34 | Impeller nut [2] | AISI 304 | 1 |
| 36 | External motor casing | AISI 304 | 1 |
| 56 | Box gasket | NBR | 1 |
| 58 | Cable entry | - | 1 |
| 77 | O-ring | NBR | 1 |
| 78 | O-ring | NBR | 1 |
| 200 | Screw | Stainless steel A2 UNI7323 | 6 |

[1] Only for single phase

[2] Only for three phase

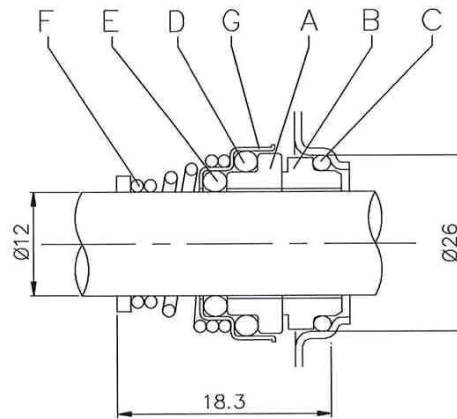
[3] See **CONSTRUCTION 3**

(3/3)

Construction

Pump Name JESM 6

| | | |
|----------|--|-----------|
| Customer | Date 2024-06-16 | Company |
| Contact | Item no. | Issued by |
| Phone | Project | Phone |
| E-mail | Project ID Proiect redenumit 2024-06-16 15:45:44 | E-mail |



| REF | PART NAME | MATERIAL |
|-----|----------------------|-----------------|
| A | Rotary seal ring | ceramic |
| B | Stationary seal ring | carbon graphite |
| C | O Ring | NBR |
| D | O Ring | NBR |
| E | O Ring | NBR |
| F | Self driving spring | AISI 316 |
| G | Frame | AISI 304 |