

# Technical Data

Pump Name

LPC4 150-250/15 QQPFF

|          |            |                                       |           |
|----------|------------|---------------------------------------|-----------|
| Customer | Date       | 2024-06-16                            | Company   |
| Contact  | Item no.   |                                       | Issued by |
| Phone    | Project    |                                       | Phone     |
| E-mail   | Project ID | Proiect redenumit 2024-06-16 15:45:44 | E-mail    |

## Requested data

|   |                           |                   |                    |          |        |
|---|---------------------------|-------------------|--------------------|----------|--------|
| 1 | Pump type                 | CENTRIFUGAL PUMPS | Fluid              | Water    |        |
| 2 | Number of pumps / Reserve | 1 / 0             | Liquid temperature | °C       | 20     |
| 3 | Flow                      | m³/h              | Kin. viscosity     | mm²/s    | 1.005  |
| 4 | Head                      | m                 | Vapour pressure    | bar      | 0.0234 |
| 5 | Geodetic head             | m                 | PH value           |          |        |
| 6 | Inlet pressure (pin)      | bar               | Density            | kg/m³    | 998.3  |
| 7 | Available system NPSH     |                   | Solids             | Weight % | 0      |
| 8 | Ambient temperature       | °C                | 20                 |          |        |

## Pump

|    |                      |                       |                                |                                   |           |       |      |
|----|----------------------|-----------------------|--------------------------------|-----------------------------------|-----------|-------|------|
| 9  | Pump Name            | LPC4 150-250/15 QQPFF | Frequency                      | Hz                                | 50        |       |      |
| 10 | Design               | CENTRIFUGAL PUMPS     | Installation type              |                                   | STANDARD  |       |      |
| 11 | Manufacturer         | EBARA                 | Impeller Diameter              | Max.                              | mm        | 259   |      |
| 12 | Speed                | rpm                   |                                | 1450                              | Designed  | mm    | 259  |
| 13 | No. of Stage         | 1                     |                                | Min.                              | mm        | 259   |      |
| 14 | Connection           | Suction side          | Flow                           | Operating                         | m³/h      |       |      |
| 15 | Connection           | Discharge side        |                                | Max-                              | m³/h      | 300   |      |
| 16 | Max Working Pressure | bar                   |                                | 10                                | Min-      | m³/h  | 62   |
| 17 | Shut-off head        | bar                   | 2.13                           | Head                              | Operating | m     |      |
| 18 | Total weight         | kg                    | See the table of "Dimensions". |                                   | - (Qmax.) | m     | 10.6 |
| 19 | Shaft power          | kW                    |                                |                                   | - (Qmin.) | m     | 21.2 |
| 20 |                      |                       |                                | Max. Shaft Power at max. impeller | kW        | 12.99 |      |
| 21 | Required pump NPSH   | m                     |                                | Efficiency                        | %         |       |      |

## Materials

|    |                     |                 |  |  |
|----|---------------------|-----------------|--|--|
| 22 | Impeller            | EN-GJL-200      |  |  |
| 23 | Intermediate casing | EN-GJL-200      |  |  |
| 24 | Bottom casing       | EN-GJL-200      |  |  |
| 25 | Shaft               | Stainless steel |  |  |
| 26 | Gasket              | AF1600          |  |  |
| 27 |                     |                 |  |  |

## Motor

|    |                      |                                      |                  |                  |     |      |
|----|----------------------|--------------------------------------|------------------|------------------|-----|------|
| 28 | Manufacturer         | LAFERT                               | Insulation class | F                |     |      |
| 29 | Type                 | TEFC_LPC4 150-250/15_400_Three Phase | Phases           | 3~               |     |      |
| 30 | Specific design      | IE3 / 50 Hz / Pole pairs 2           | Frame size       | 160              |     |      |
| 31 | Rated power          | kW                                   | 15               | Weight           | kg  | 114  |
| 32 | Number of poles      | 4                                    | Electric voltage | V                | 400 |      |
| 33 | Speed                | rpm                                  | 1465             | Electric current | A   | 30.5 |
| 34 | Degree of protection | IP 55                                |                  |                  |     |      |
| 35 |                      |                                      |                  |                  |     |      |

## Remarks

|  |
|--|
|  |
|--|

# Performance Curve

Pump Name

LPC4 150-250/15 QQPFF

|          |            |                                       |           |
|----------|------------|---------------------------------------|-----------|
| Customer | Date       | 2024-06-16                            | Company   |
| Contact  | Item no.   |                                       | Issued by |
| Phone    | Project    |                                       | Phone     |
| E-mail   | Project ID | Proiect redenumit 2024-06-16 15:45:44 | E-mail    |

## Requested data

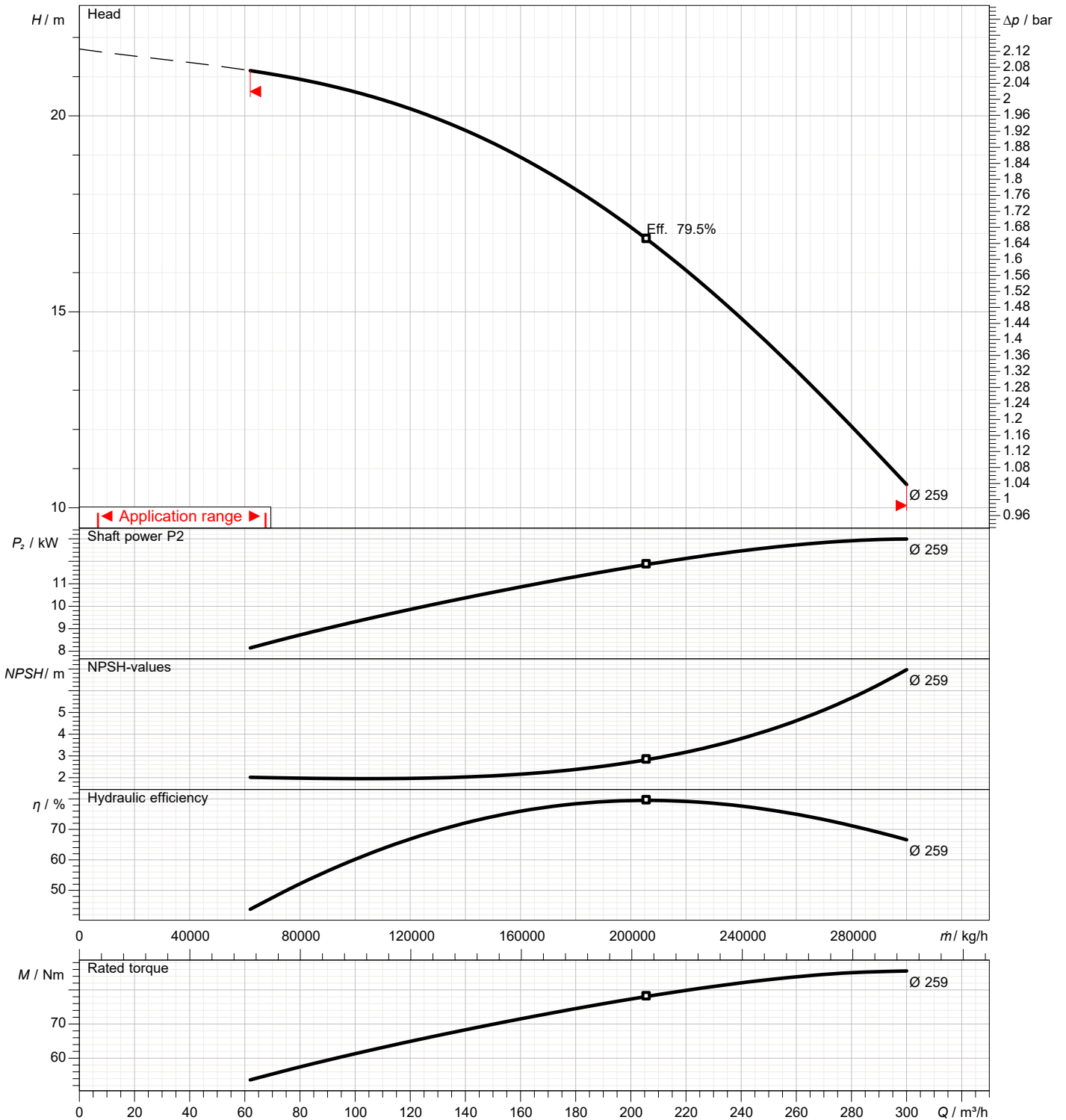
|   |               |      |  |
|---|---------------|------|--|
| 1 | Flow          | m³/h |  |
| 2 | Head          | m    |  |
| 3 | Geodetic head | m    |  |

## Pump

|                            |      |     |                 |     |      |
|----------------------------|------|-----|-----------------|-----|------|
| Operating flow             | m³/h |     | Frequency       | Hz  | 50   |
| Operating head             | m    |     | Number of poles |     | 4    |
| Impeller diameter designed | mm   | 259 | Speed           | rpm | 1450 |

Test standard: ISO 9906:2012 - Grade3B

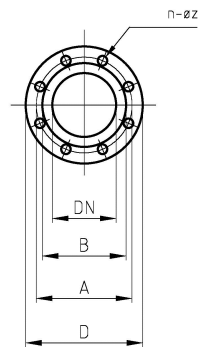
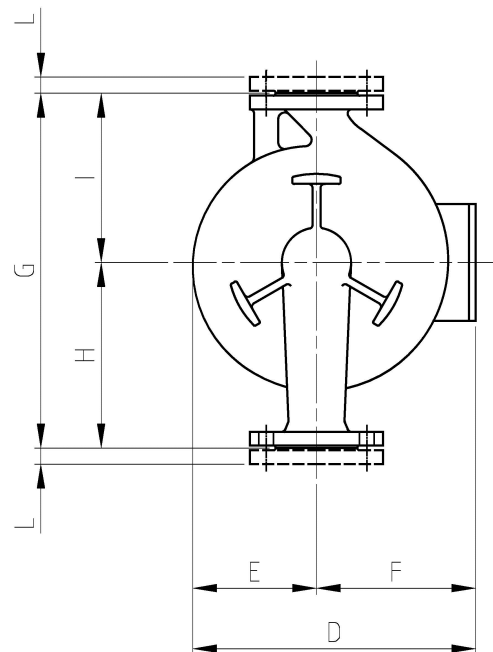
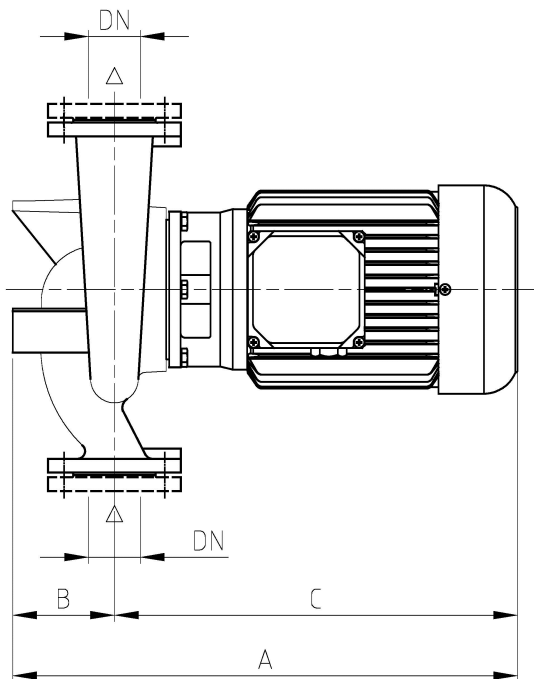
Water; 20°C; 998.3kg/m³; 1mm²/s



# Dimensions

Pump name **LPC4 150-250/15 QQPFF**

|          |                                                  |           |
|----------|--------------------------------------------------|-----------|
| Customer | Date 2024-06-16                                  | Company   |
| Contact  | Item no.                                         | Issued by |
| Phone    | Project                                          | Phone     |
| E-mail   | Project ID Proiect redenumit 2024-06-16 15:45:44 | E-mail    |

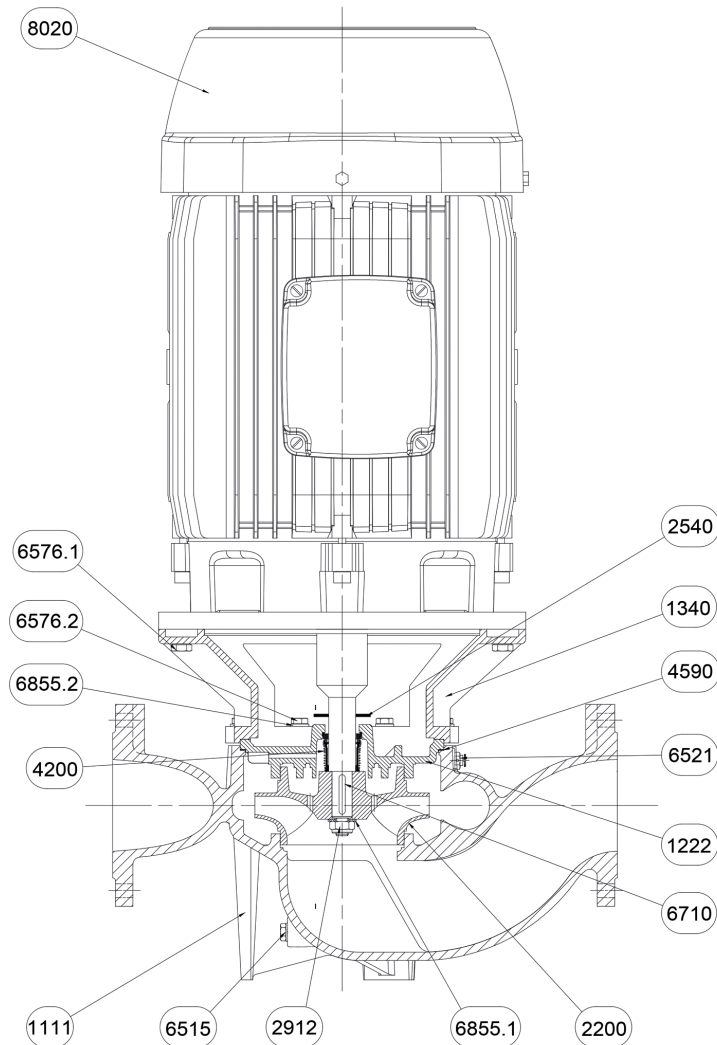


| Dimensions in |        | mm  |            |        |  |  |  |
|---------------|--------|-----|------------|--------|--|--|--|
| 1             | A      | 939 | L          | 28     |  |  |  |
| 2             | B      | 220 | Weight P&M | 227 kg |  |  |  |
| 3             | C      | 719 |            |        |  |  |  |
| 4             | D      | 448 |            |        |  |  |  |
| 5             | Dia A  | 240 |            |        |  |  |  |
| 6             | Dia B  | 212 |            |        |  |  |  |
| 7             | Dia D  | 285 |            |        |  |  |  |
| 8             | Dia DN | 150 |            |        |  |  |  |
| 9             | Dia n  | 8   |            |        |  |  |  |
| 10            | Dia Z  | 22  |            |        |  |  |  |
| 11            | E      | 210 |            |        |  |  |  |
| 12            | F      | 238 |            |        |  |  |  |
| 13            | G      | 700 |            |        |  |  |  |
| 14            | H      | 370 |            |        |  |  |  |
| 15            | I      | 330 |            |        |  |  |  |

# (1/2) Construction

Pump name LPC4 150-250/15 QQPFF

|          |                                                  |           |
|----------|--------------------------------------------------|-----------|
| Customer | Date 2024-06-16                                  | Company   |
| Contact  | Item no.                                         | Issued by |
| Phone    | Project                                          | Phone     |
| E-mail   | Project ID Proiect redenumit 2024-06-16 15:45:44 | E-mail    |



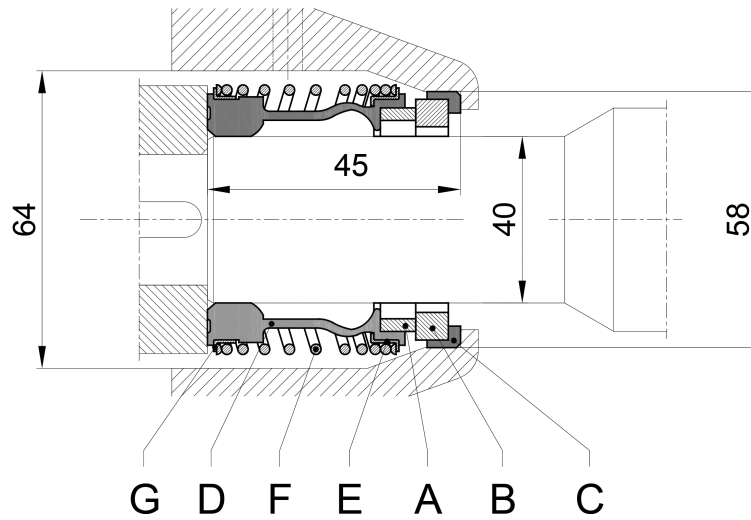
| N°     | PART NAME            | MATERIAL             | Q.TY |
|--------|----------------------|----------------------|------|
| 1111   | Pump casing          | EN-GJL-200           | 1    |
| 1222   | Gland cover          | EN-GJL-200           | 1    |
| 1340   | Latern               | EN-GJL-200           | 1    |
| 2200   | Impeller             | EN-GJL-200           | 1    |
| 2540   | Baffle               | NB 70                | 1    |
| 2912   | Impeller nut         | 6.8-ZN               | 1    |
| 4200   | Mechanica sela       | Sic/Sic/NBR/AISI 304 | 1    |
| 4590   | Gasket               | AF 1600              | 1    |
| 6515   | Drain plug           | EN-GJMB-350-10       | 1    |
| 6521   | Vent valve           | CW509L               | 1    |
| 6576.1 | Hexagonal head screw | 8.8-ZN               | 4    |
| 6576.2 | Hexagonal head screw | 8.8-ZN               | 12   |
| 6710   | Key                  | C50                  | 1    |
| 6855.1 | Impeller washer      | R40-ZN               | 1    |
| 6855.2 | Washer               | R40-ZN               | 12   |
| 8020   | Motor                |                      | 1    |

(2/2)

# Construction

Pump name LPC4 150-250/15 QQPFF

|          |                                                  |           |
|----------|--------------------------------------------------|-----------|
| Customer | Date 2024-06-16                                  | Company   |
| Contact  | Item no.                                         | Issued by |
| Phone    | Project                                          | Phone     |
| E-mail   | Project ID Proiect redenumit 2024-06-16 15:45:44 | E-mail    |



| Ref. | Name                 | Material        |
|------|----------------------|-----------------|
| A    | Rotary seal ring     | Carbon          |
| B    | Stationary seal ring | Silicon Carbide |
| C    | Gasket               | EPDM            |
| D    | Bellows              | EPDM            |
| E    | Spring plate         | AISI 304        |
| F    | Spring               | AISI 304        |
| G    | Spring plate         | AISI 304        |