

# Technical Data

Pump Name

LPS 25/25

|          |            |                                       |           |
|----------|------------|---------------------------------------|-----------|
| Customer | Date       | 2024-06-16                            | Company   |
| Contact  | Item no.   |                                       | Issued by |
| Phone    | Project    |                                       | Phone     |
| E-mail   | Project ID | Proiect redenumit 2024-06-16 15:45:44 | E-mail    |

## Requested data

|   |                           |                           |                    |          |
|---|---------------------------|---------------------------|--------------------|----------|
| 1 | Pump type                 | IN LINE CENTRIFUGAL PUMPS | Fluid              | Water    |
| 2 | Number of pumps / Reserve | 1 / 0                     | Liquid temperature | °C       |
| 3 | Flow                      | m³/h                      | Kin. viscosity     | mm²/s    |
| 4 | Head                      | m                         | Vapour pressure    | bar      |
| 5 | Geodetic head             | m                         | PH value           |          |
| 6 | Inlet pressure (pin)      | bar                       | Density            | kg/m³    |
| 7 | Available system NPSH     |                           | Solids             | Weight % |
| 8 | Ambient temperature       | °C                        |                    |          |

## Pump

|    |                      |                           |                                   |           |           |      |      |
|----|----------------------|---------------------------|-----------------------------------|-----------|-----------|------|------|
| 9  | Pump Name            | LPS 25/25                 | Frequency                         | Hz        | 50        |      |      |
| 10 | Design               | IN LINE CENTRIFUGAL PUMPS | Installation type                 |           | STANDARD  |      |      |
| 11 | Manufacturer         | EBARA                     | Impeller Diameter                 | Max.      | mm        |      |      |
| 12 | Speed                | rpm                       |                                   | 2800      | Designed  | mm   |      |
| 13 | No. of Stage         | 1                         |                                   | Min.      | mm        | 114  |      |
| 14 | Connection           | Suction side              | Flow                              | Operating | m³/h      |      |      |
| 15 | Connection           | Discharge side            |                                   | Max-      | m³/h      | 4.2  |      |
| 16 | Max Working Pressure | bar                       |                                   | 10        | Min-      | m³/h | 1.2  |
| 17 | Shut-off head        | bar                       | 1.34                              | Head      | Operating | m    |      |
| 18 | Total weight         | kg                        | See the table of "Dimensions".    |           | - (Qmax.) | m    | 8.3  |
| 19 | Shaft power          | kW                        |                                   |           | - (Qmin.) | m    | 12.5 |
| 20 |                      |                           | Max. Shaft Power at max. impeller | kW        | 0.26      |      |      |
| 21 | Required pump NPSH   | m                         | Efficiency                        | %         |           |      |      |

## Materials

|    |          |                          |  |  |
|----|----------|--------------------------|--|--|
| 22 | Impeller | AISI 304                 |  |  |
| 23 | Casing   | AISI 304                 |  |  |
| 24 | Shaft    | AISI 303 (wet extension) |  |  |
| 25 |          |                          |  |  |
| 26 |          |                          |  |  |
| 27 |          |                          |  |  |

## Motor

|    |                      |                                   |                  |                  |     |
|----|----------------------|-----------------------------------|------------------|------------------|-----|
| 28 | Manufacturer         | EPE Standard                      | Insulation class | F                |     |
| 29 | Type                 | TEFC_LPS 25/25 M_230_Single Phase | Phases           | 1~               |     |
| 30 | Specific design      | IE2 / 50 Hz / Pole pairs 1        | Frame size       |                  |     |
| 31 | Rated power          | kW                                | 0.25             | Weight           | kg  |
| 32 | Number of poles      | 2                                 | Electric voltage | V                | 230 |
| 33 | Speed                | rpm                               | 2800             | Electric current | A   |
| 34 | Degree of protection | IP 55                             |                  |                  |     |
| 35 |                      |                                   |                  |                  |     |

## Remarks

# Performance Curve

Pump Name

LPS 25/25

|          |            |                                       |           |
|----------|------------|---------------------------------------|-----------|
| Customer | Date       | 2024-06-16                            | Company   |
| Contact  | Item no.   |                                       | Issued by |
| Phone    | Project    |                                       | Phone     |
| E-mail   | Project ID | Project redenumit 2024-06-16 15:45:44 | E-mail    |

## Requested data

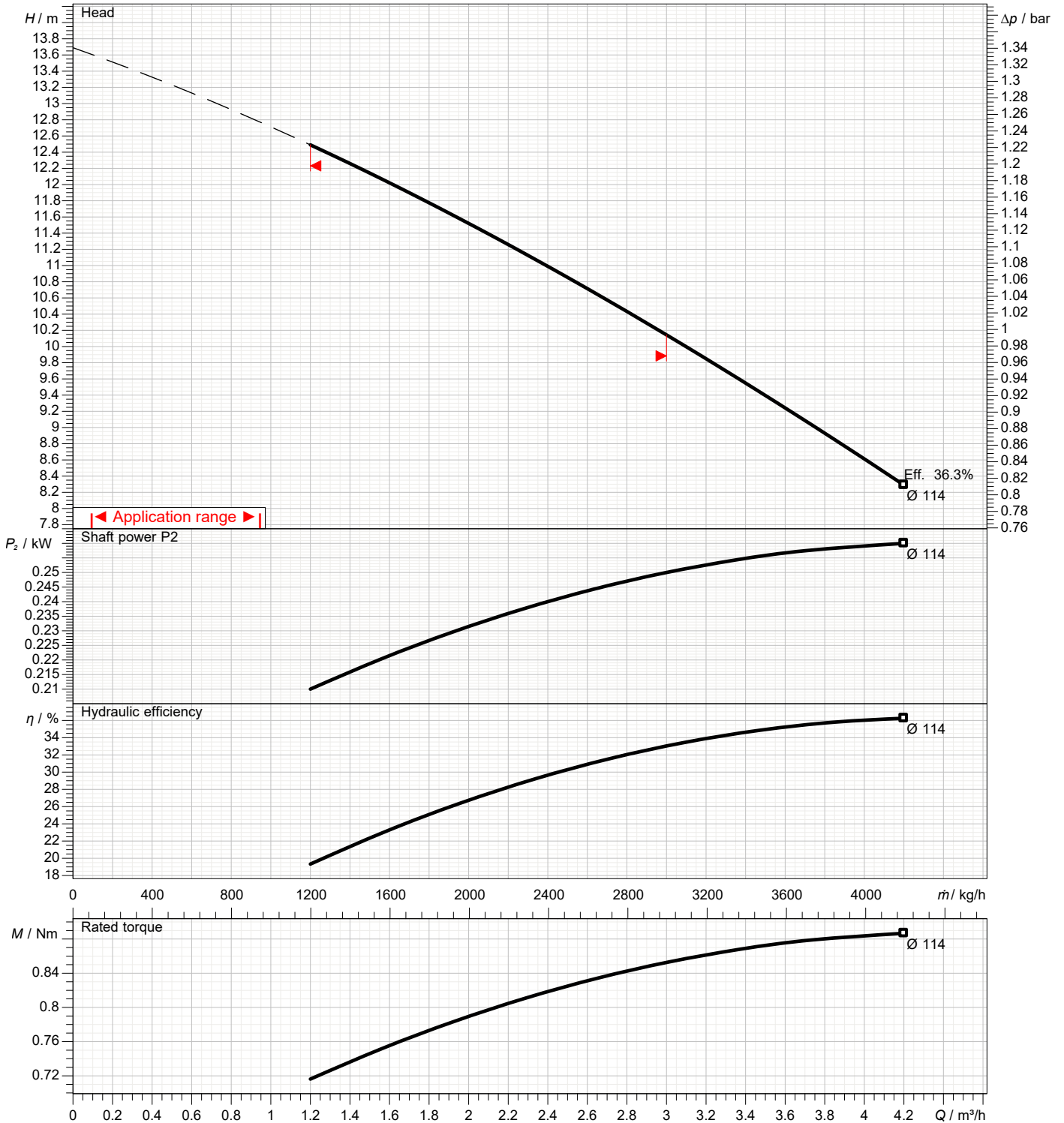
|   |               |      |  |
|---|---------------|------|--|
| 1 | Flow          | m³/h |  |
| 2 | Head          | m    |  |
| 3 | Geodetic head | m    |  |

## Pump

|                            |      |     |                 |     |      |
|----------------------------|------|-----|-----------------|-----|------|
| Operating flow             | m³/h |     | Frequency       | Hz  | 50   |
| Operating head             | m    |     | Number of poles |     | 2    |
| Impeller diameter designed | mm   | 114 | Speed           | rpm | 2800 |

Test standard: ISO 9906:2012 - Grade3B

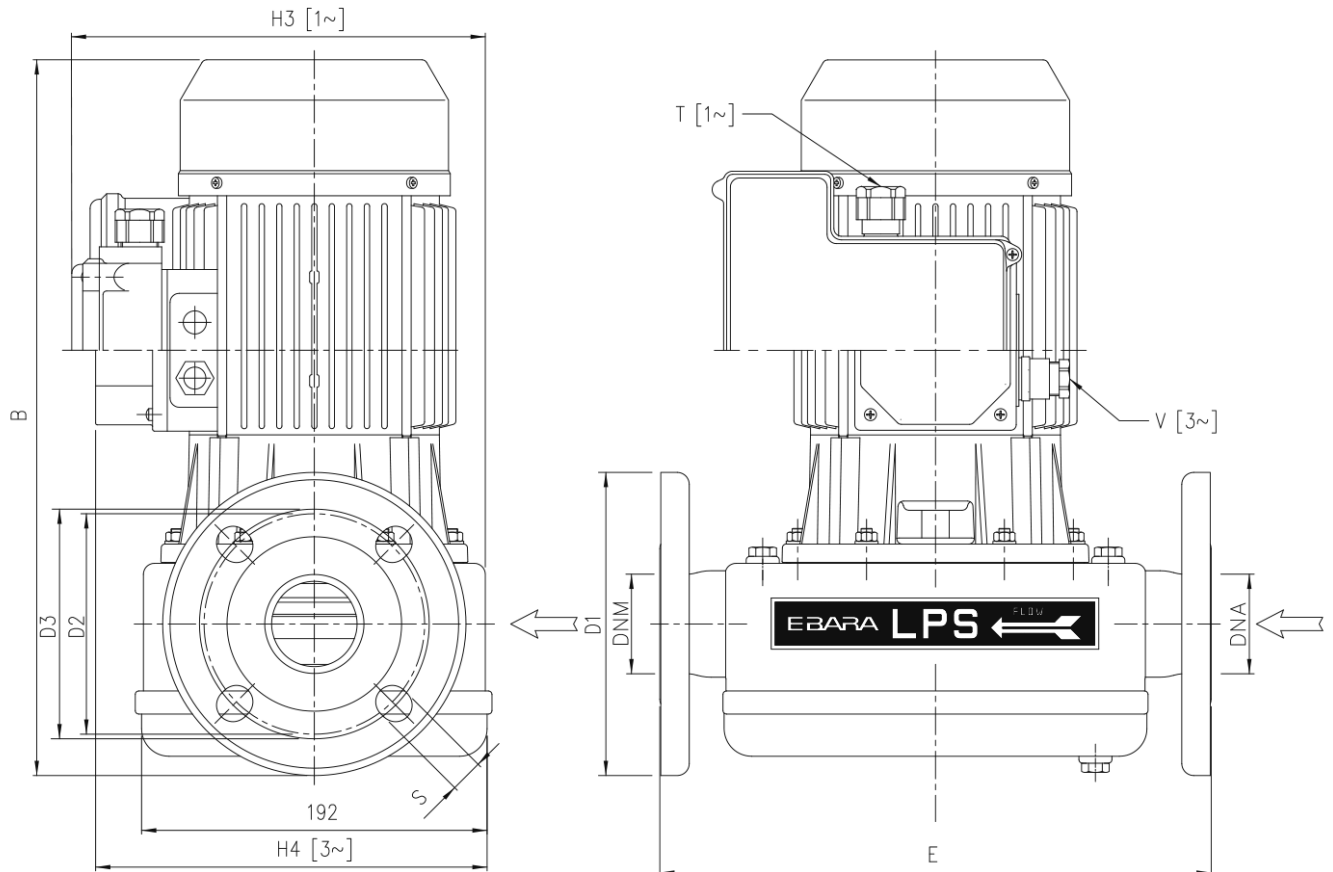
Water; 20°C; 998.3kg/m³; 1mm²/s



# Dimensions

Pump Name LPS 25/25

|          |  |           |
|----------|--|-----------|
| Customer | Date 2024-06-16                                  | Company   |
| Contact  | Item no.   | Issued by |
| Phone    | Project  | Phone     |
| E-mail   | Project ID Proiect redenumit 2024-06-16 15:45:44 | E-mail    |



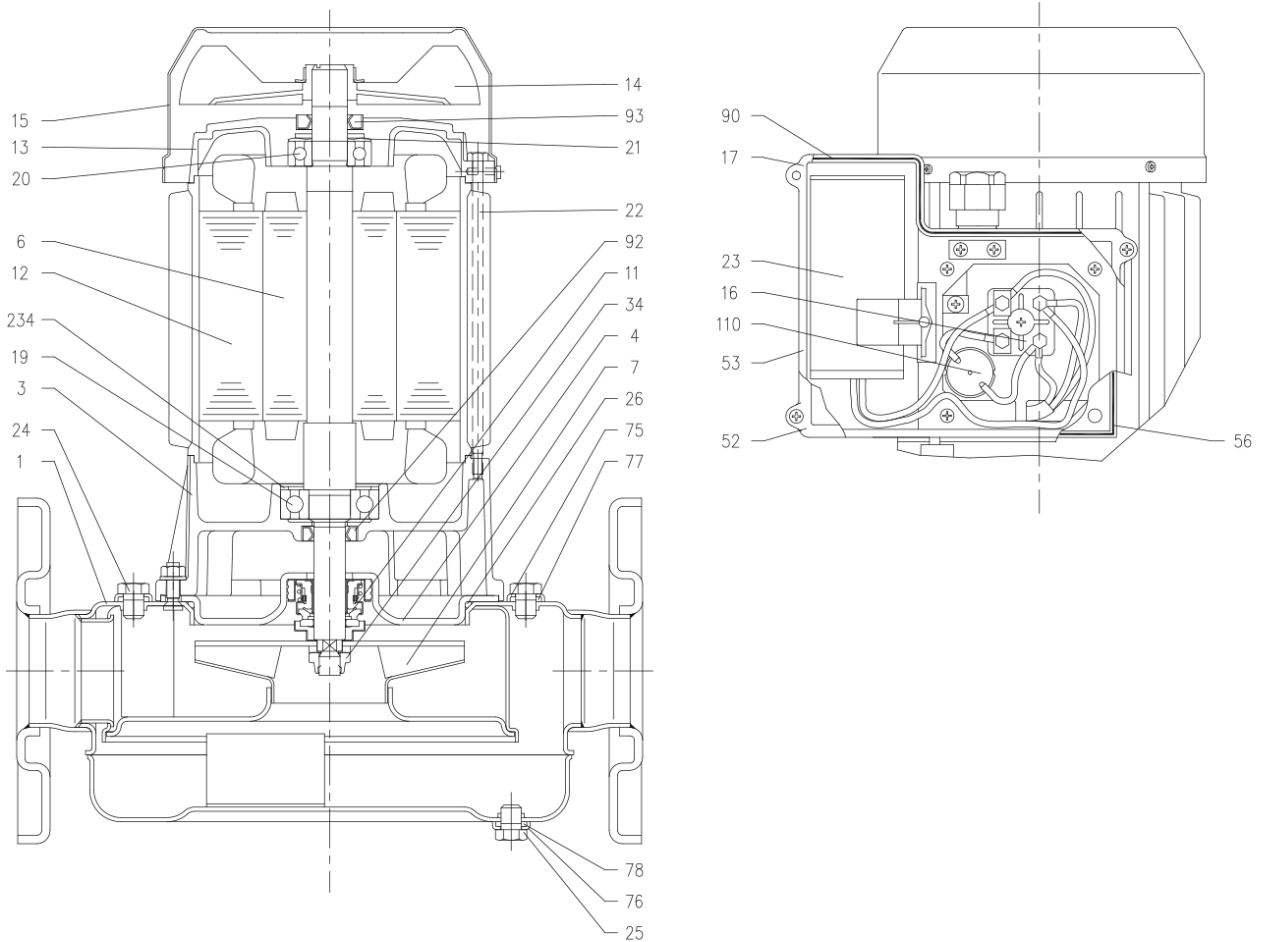
| Dimensions in |            | mm     |  |  |  |  |  |  |
|---------------|------------|--------|--|--|--|--|--|--|
| 1             | B          | 322    |  |  |  |  |  |  |
| 2             | D1         | 115    |  |  |  |  |  |  |
| 3             | D2         | 85     |  |  |  |  |  |  |
| 4             | D3         | 85     |  |  |  |  |  |  |
| 5             | DNA        | 25     |  |  |  |  |  |  |
| 6             | DNM        | 25     |  |  |  |  |  |  |
| 7             | E          | 300    |  |  |  |  |  |  |
| 8             | H4         | 197.5  |  |  |  |  |  |  |
| 9             | S          | 14     |  |  |  |  |  |  |
| 10            | V          | PG 11  |  |  |  |  |  |  |
| 11            | Weight P&M | 10.7kg |  |  |  |  |  |  |
| 12            |            |        |  |  |  |  |  |  |
| 13            |            |        |  |  |  |  |  |  |
| 14            |            |        |  |  |  |  |  |  |
| 15            |            |        |  |  |  |  |  |  |

(1/3)

# Construction

Pump Name LPS 25/25

|          |  |           |
|----------|--|-----------|
| Customer | Date 2024-06-16                                  | Company   |
| Contact  | Item no.   | Issued by |
| Phone    | Project  | Phone     |
| E-mail   | Project ID Proiect redenumit 2024-06-16 15:45:44 | E-mail    |



(2/3)

# Construction

Pump Name LPS 25/25

|          |            |                                       |           |
|----------|------------|---------------------------------------|-----------|
| Customer | Date       | 2024-06-16                            | Company   |
| Contact  | Item no.   |                                       | Issued by |
| Phone    | Project    |                                       | Phone     |
| E-mail   | Project ID | Project redenumit 2024-06-16 15:45:44 | E-mail    |

| N°  | PART NAME                 | MATERIAL                 | DIMENSION | STANDARD  |
|-----|---------------------------|--------------------------|-----------|-----------|
| 1   | Casing                    | AISI 304                 |           |           |
| 3   | Motor bracket             | Aluminium                |           |           |
| 4   | Casing cover              | AISI 304                 |           |           |
| 6   | Shaft w ith rotor         | AISI 303 (Wet extension) |           |           |
| 7   | Impeller                  | AISI 304                 |           |           |
| 11  | Mechanical seal [4]       | Carbon/Ceramic/NBRH      |           |           |
| 12  | Motor frame w ith stator  | -                        |           |           |
| 13  | Motor cover               | Aluminium                |           |           |
| 14  | Fan                       | PA                       |           |           |
| 15  | Fan cover                 | Fe P04 Galvanized        |           |           |
| 16  | Terminal board            | -                        |           |           |
| 17  | Terminal box cover [2]    | Aluminium                |           |           |
| 19  | Pump side ball bearing    | -                        |           |           |
| 20  | Fan side ball bearing     | -                        |           |           |
| 21  | Adjusting ring            | Steel C70                |           |           |
| 22  | Tie rod                   | Fe 420 Galvanized        |           |           |
| 23  | Capacitor [1]             | -                        |           |           |
| 24  | Priming plug              | AISI 304                 | 1/8" G    | ISO 228/2 |
| 25  | Drain plug                | AISI 304                 | 1/8" G    | ISO 228/2 |
| 26  | O-ring                    | NBR                      |           |           |
| 34  | Impeller nut              | AISI 304                 | M10x1.25  | UNI 7474  |
| 52  | Capacitor box [1]         | ABS class V-0            |           |           |
| 53  | Capacitor box cover [1]   | ABS class V-0            |           |           |
| 56  | Box gasket                | NBR                      |           |           |
| 75  | Washer                    | AISI 304                 |           |           |
| 76  | Washer                    | AISI 304                 |           |           |
| 77  | O-ring                    | NBR                      |           |           |
| 78  | O-ring                    | NBR                      |           |           |
| 90  | Terminal box cover gasket | NBR                      |           |           |
| 92  | Lip seal                  | NBR                      |           |           |
| 93  | Lip seal                  | NBR                      |           |           |
| 110 | Protector [3]             | -                        |           |           |
| 234 | Seeger ring               | Carbon steel             |           |           |

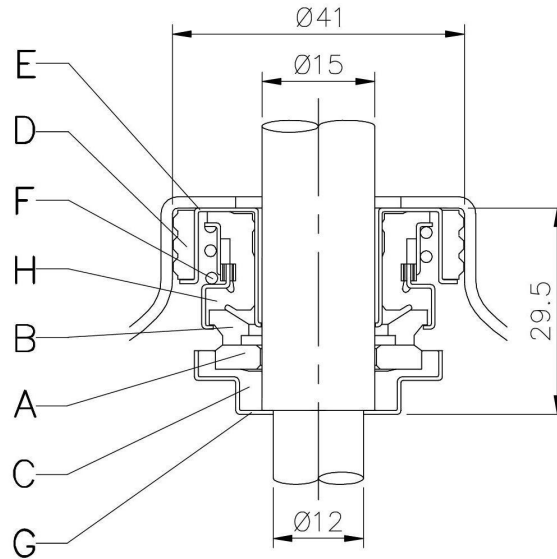
- [1] Only for single phase
- [2] Only for three phase
- [3] Only for version single phase: LPS 50/150M
- [4] See **CONSTRUCTION 3**

(3/3)

# Construction

Pump Name LPS 25/25

|          |  |           |
|----------|--|-----------|
| Customer | Date 2024-06-16                                  | Company   |
| Contact  | Item no.   | Issued by |
| Phone    | Project  | Phone     |
| E-mail   | Project ID Proiect redenumit 2024-06-16 15:45:44 | E-mail    |



| REF | PART NAME            | MATERIAL        |
|-----|----------------------|-----------------|
| A   | Rotary seal ring     | ceramic         |
| B   | Stationary seal ring | carbon graphite |
| C   | Cup Gasket           | NBRH            |
| D   | Seal ring            | NBRH            |
| E   | Case                 | AISI 304        |
| F   | Selfdriving spring   | AISI 304        |
| G   | Case                 | AISI 304        |
| H   | Belows               | NBRH            |