

Technical Data

Pump Name

MMD4 100-250/9.2

Customer	Date	2024-06-16	Company
Contact	Item no.		Issued by
Phone	Project		Phone
E-mail	Project ID	Proiect redenumit 2024-06-16 15:45:44	E-mail

Requested data

1	Pump type	MONOBLOC CENTRIFUGAL ELECTRIC PUMF	Fluid	Water
2	Number of pumps / Reserve	1 / 0	Liquid temperature	°C
3	Flow	m³/h	Kin. viscosity	mm²/s
4	Head	m	Vapour pressure	bar
5	Geodetic head	m	PH value	
6	Inlet pressure (pin)	bar	Density	kg/m³
7	Available system NPSH		Solids	Weight %
8	Ambient temperature	°C		

Pump

9	Pump Name	MMD4 100-250/9.2	Frequency	Hz	50	
10	Design	MONOBLOC CENTRIFUGAL ELECTRIC PUMF	Installation type		STANDARD	
11	Manufacturer	EBARA	Impeller Diameter	Max.	mm	
12	Speed	rpm		1500	Designed	mm
13	No. of Stage			1	Min.	mm
14	Connection	Suction side	Flow	Operating	m³/h	
15	Connection	Discharge side		Max-	m³/h	
16	Max Working Pressure	bar		Min-	m³/h	
17	Shut-off head	bar	2.19	Head	Operating	m
18	Total weight	kg	See the table of "Dimensions".		- (Qmax.)	m
19	Shaft power	kW			- (Qmin.)	m
20				Max. Shaft Power at max. impeller	kW	
21	Required pump NPSH	m		Efficiency	%	

Materials

22				
23				
24				
25				
26				
27				

Motor

28	Manufacturer	EPE Standard	Insulation class	F	
29	Type	TEFC_MMD4 100-250/9.2_400_Three Phase	Phases	3~	
30	Specific design	- / 50 Hz / Pole pairs 2	Frame size		
31	Rated power	kW	9.2	Weight	kg
32	Number of poles		4	Electric voltage	V
33	Speed	rpm	1500	Electric current	A
34	Degree of protection		IP 55		
35					

Remarks

Performance Curve

Pump Name

MMD4 100-250/9.2

Customer	Date	2024-06-16	Company
Contact	Item no.		Issued by
Phone	Project		Phone
E-mail	Project ID	Proiect redenumit 2024-06-16 15:45:44	E-mail

Requested data

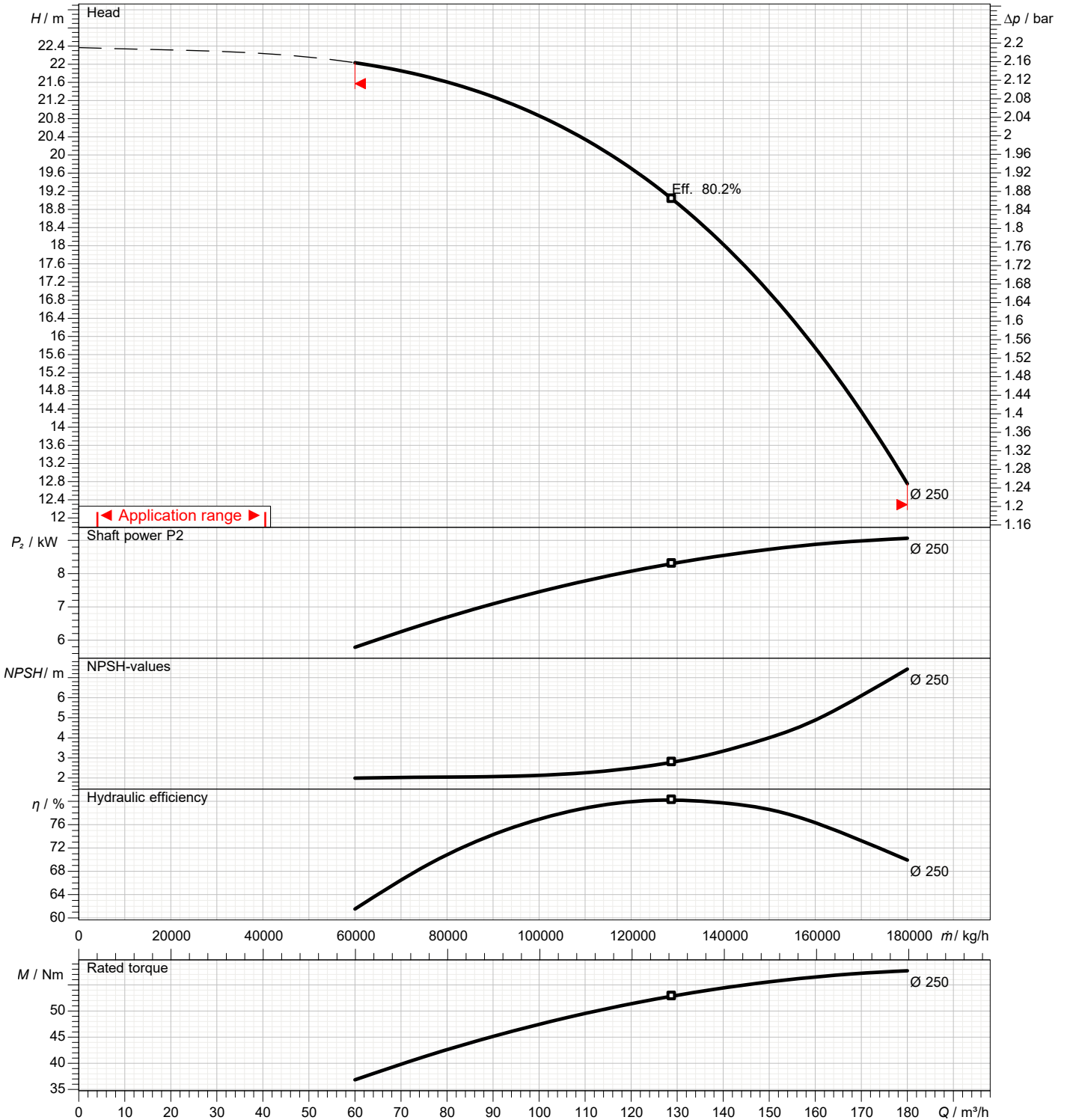
1	Flow	m³/h	
2	Head	m	
3	Geodetic head	m	

Pump

Operating flow	m³/h		Frequency	Hz	50
Operating head	m		Number of poles		4
Impeller diameter designed	mm	250	Speed	rpm	1500

Test standard: ISO 9906:2012 - Grade3B

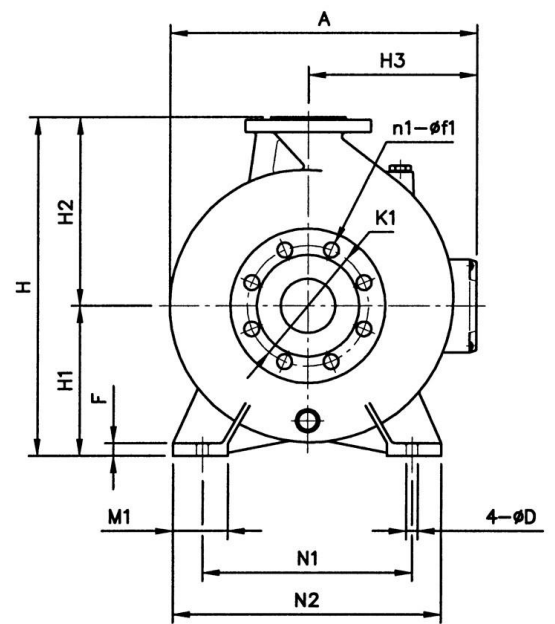
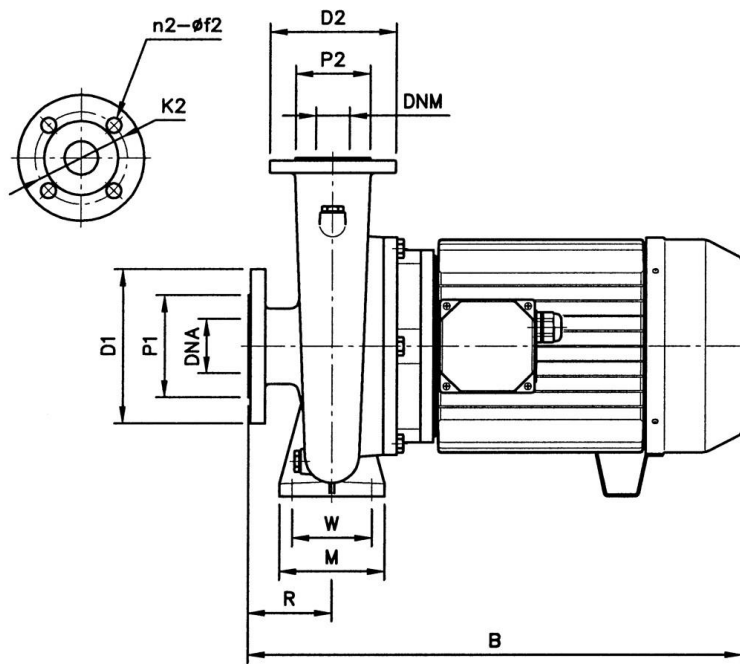
Water; 20°C; 998.3kg/m³; 0mm²/s



Dimensions

Pump name MMD4 100-250/9.2

Customer	Date 2024-06-16	Company
Contact	Item no.	Issued by
Phone	Project	Phone
E-mail	Project ID Proiect redenumit 2024-06-16 15:45:44	E-mail



Dimensions in		mm		
1	A	420	K2	180
2	B	675	M	160
3	D	18	M1	80
4	D1	250	n1	8
5	D2	220	N1	315
6	DNA	125	n2	8
7	DNM	100	N2	400
8	F	14	P1	188
9	f1	18	P2	158
10	f2	18	R	140
11	H	505	W	120
12	H1	225	Weight kg	118
13	H2	280		
14	H3	184		
15	K1	210		

Construction

Pump name MMD4 100-250/9.2

Customer	Date 2024-06-16	Company
Contact	Item no.	Issued by
Phone	Project	Phone
E-mail	Project ID Proiect redenumit 2024-06-16 15:45:44	E-mail