

Technical Data

Pump Name

MMD4 125-250/11 QQPFF

Customer	Date	2024-06-16	Company
Contact	Item no.		Issued by
Phone	Project		Phone
E-mail	Project ID	Proiect redenumit 2024-06-16 15:45:44	E-mail

Requested data

1	Pump type		CENTRIFUGAL PUMPS	Fluid		Water
2	Number of pumps / Reserve		1 / 0	Liquid temperature	°C	20
3	Flow	m³/h		Kin. viscosity	mm²/s	1.005
4	Head	m		Vapour pressure	bar	0.0234
5	Geodetic head	m		PH value		
6	Inlet pressure (pin)	bar	0	Density	kg/m³	998.3
7	Available system NPSH			Solids	Weight %	0
8	Ambient temperature	°C	20			

Pump

9	Pump Name		MMD4 125-250/11 QQPFF	Frequency	Hz	50
10	Design		CENTRIFUGAL PUMPS	Installation type		STANDARD
11	Manufacturer		EBARA	Impeller Diameter	Max. mm	238
12	Speed	rpm	1450		Designed mm	238
13	No. of Stage		1		Min. mm	238
14	Connection	Suction side		Flow	Operating m³/h	
15	Connection	Discharge side			Max- m³/h	232
16	Max Working Pressure	bar	10		Min- m³/h	50
17	Shut-off head	bar	1.82	Head	Operating m	
18	Total weight	kg	See the table of "Dimensions".		- (Qmax.) m	10.5
19	Shaft power	kW			- (Qmin.) m	18.3
20				Max. Shaft Power at max. impeller	kW	9.77
21	Required pump NPSH	m		Efficiency	%	

Materials

22	Impeller		EN-GJL-200			
23	Intermediate casing		EN-GJL-200			
24	Bottom casing		EN-GJL-200			
25	Shaft		Stainless steel			
26	Gasket		AF1600			
27						

Motor

28	Manufacturer		LAFERT	Insulation class		F
29	Type		TEFC_MMD4 125-250/11_400_Three Phase	Phases		3~
30	Specific design		IE3 / 50 Hz / Pole pairs 2	Frame size		160
31	Rated power	kW	11	Weight	kg	108
32	Number of poles		4	Electric voltage	V	400
33	Speed	rpm	1470	Electric current	A	22.4
34	Degree of protection		IP 55			
35						

Remarks

--

Performance Curve

Pump Name

MMD4 125-250/11 QQPFF

Customer	Date	2024-06-16	Company
Contact	Item no.		Issued by
Phone	Project		Phone
E-mail	Project ID	Project redenumit 2024-06-16 15:45:44	E-mail

Requested data

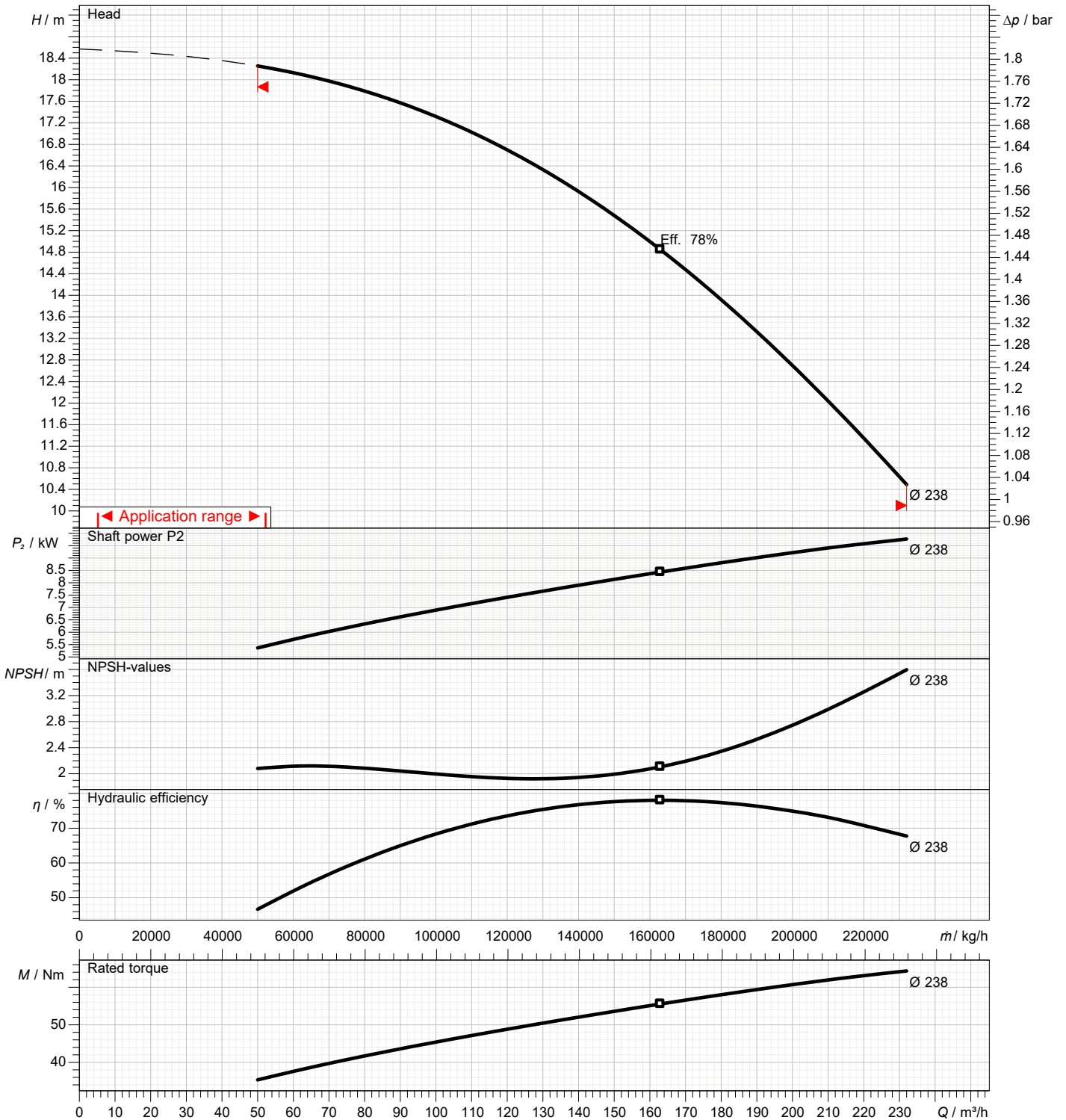
1	Flow	m³/h	
2	Head	m	
3	Geodetic head	m	

Pump

Operating flow	m³/h		Frequency	Hz	50
Operating head	m		Number of poles		4
Impeller diameter designed	mm	238	Speed	rpm	1450

Test standard: ISO 9906:2012 - Grade3B

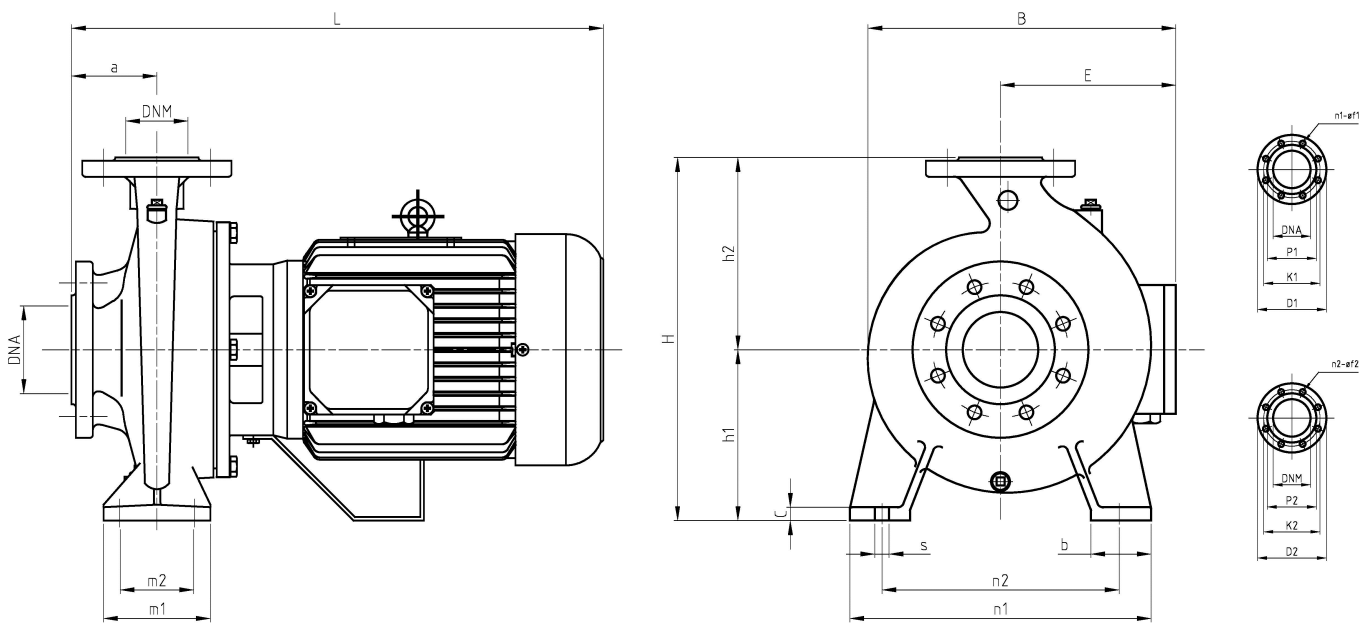
Water; 20°C; 998.3kg/m³; 1mm²/s



Dimensions

Pump name MMD4 125-250/11 QQPFF

Customer	Date 2024-06-16	Company
Contact	Item no.	Issued by
Phone	Project	Phone
E-mail	Project ID Proiect redenumit 2024-06-16 15:45:44	E-mail



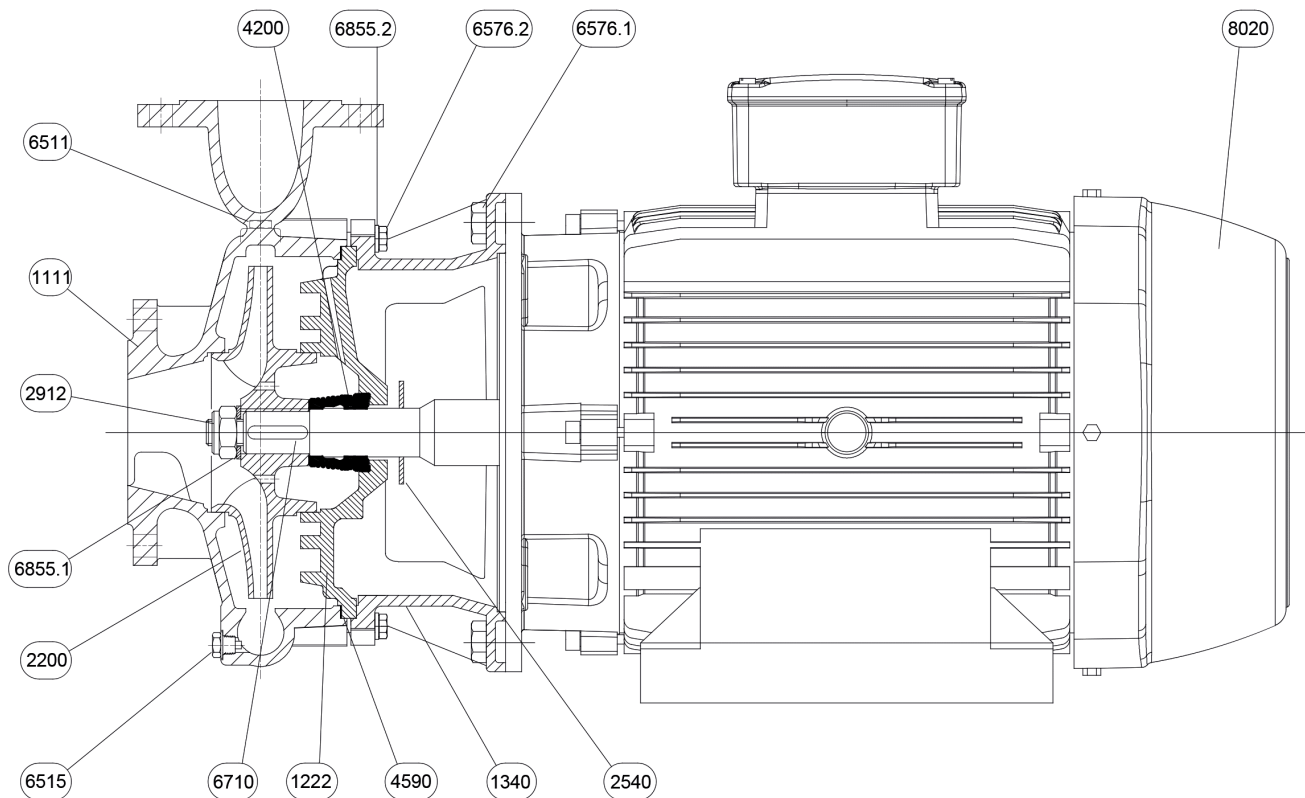
Dimensions in		mm						
1	a	140	Dia P2	188				
2	b	80	E	238				
3	B	470	H	605				
4	C	16	h1	250				
5	Dia D1	285	h2	355				
6	Dia D2	250	L	790				
7	Dia DNA	150	m1	160				
8	Dia DNM	125	m2	120				
9	Dia f1	22	n1	400				
10	Dia f2	18	n2	315				
11	Dia K1	240	s	18				
12	Dia K2	210	Weight P&M	196 kg				
13	Dia n1	8						
14	Dia n2	8						
15	Dia P1	212						

(1/2)

Construction

Pump name MMD4 125-250/11 QPFF

Customer	Date 2024-06-16	Company
Contact	Item no.	Issued by
Phone	Project	Phone
E-mail	Project ID Proiect redenumit 2024-06-16 15:45:44	E-mail



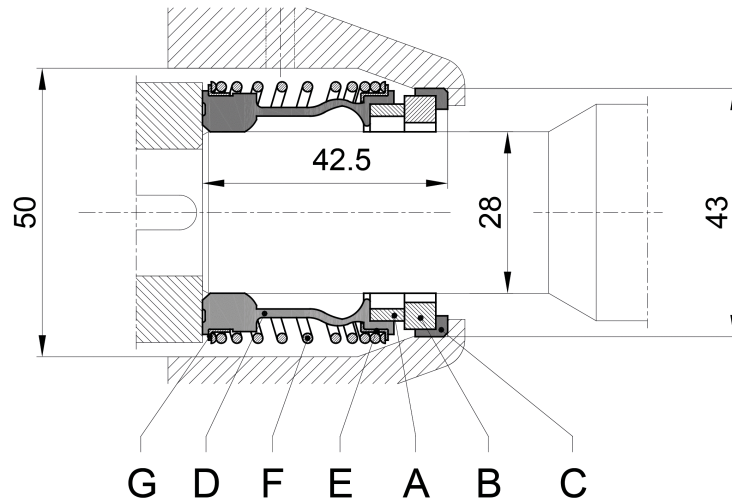
N°	PART NAME	MATERIAL	Q.TY
1111	Pump casing	EN-GJL-200	1
1222	Gland cover	EN-GJL-200	1
1340	Lantern	EN-GJL-200	1
2200	Impeller nut	EN-GJL-200	1
2540	Baffle	NB 70	1
2912	Impeller nut	6.8-ZN	1
4200	Mechanical seal	Sic/Sic/NBR/AISI 304	1
4590	Gasket	AF1600	1
6511	Refil plug	EN-GJMB-350-10	1
6515	Drain plug	EN-GJMB-350-10	1
6576.1	Hexagonal head screw	8.8-ZN	4
6576.2	Hexagonal head screw	8.8-ZN	12
6710	Key	C50	1
6855.1	Impeller washer	R40-ZN	1
6855.2	Washer	R40-ZN	12
8020	Motor		1

(2/2)

Construction

Pump name MMD4 125-250/11 QQPFF

Customer	Date 2024-06-16	Company
Contact	Item no.	Issued by
Phone	Project	Phone
E-mail	Project ID Proiect redenumit 2024-06-16 15:45:44	E-mail



Ref.	Name	Material
A	Rotary seal ring	Carbon
B	Stationary seal ring	Silicon Carbide
C	Gasket	EPDM
D	Bellows	EPDM
E	Spring plate	AISI 304
F	Spring	AISI 304
G	Spring plate	AISI 304