

Technical Data

Pump Name

MMD4 150-200/11R QQPFF

Customer	Date	2024-06-16	Company
Contact	Item no.		Issued by
Phone	Project		Phone
E-mail	Project ID	Proiect redenumit 2024-06-16 15:45:44	E-mail

Requested data

1	Pump type	CENTRIFUGAL PUMPS	Fluid	Water
2	Number of pumps / Reserve	1 / 0	Liquid temperature	°C 20
3	Flow m³/h		Kin. viscosity	mm²/s 1.005
4	Head m		Vapour pressure	bar 0.0234
5	Geodetic head m		PH value	
6	Inlet pressure (pin) bar	0	Density	kg/m³ 998.3
7	Available system NPSH		Solids	Weight % 0
8	Ambient temperature °C	20		

Pump

9	Pump Name	MMD4 150-200/11R QQPFF	Frequency	Hz 50
10	Design	CENTRIFUGAL PUMPS	Installation type	STANDARD
11	Manufacturer	EBARA	Impeller Diameter	Max. mm 190
12	Speed rpm	1450		Designed mm 190
13	No. of Stage	1		Min. mm 190
14	Connection Suction side		Flow	Operating m³/h
15	Connection Discharge side			Max- m³/h 338
16	Max Working Pressure bar	10		Min- m³/h 70
17	Shut-off head bar	1.23	Head	Operating m
18	Total weight kg	See the table of "Dimensions".		- (Qmax.) m 5.3
19	Shaft power kW			- (Qmin.) m 12.4
20			Max. Shaft Power at max. impeller	kW 8.11
21	Required pump NPSH m		Efficiency	%

Materials

22	Impeller	EN-GJL-200	
23	Intermediate casing	EN-GJL-200	
24	Bottom casing	EN-GJL-200	
25	Shaft	Stainless steel	
26	Gasket	AF1600	
27			

Motor

28	Manufacturer	LAFERT	Insulation class	F
29	Type	TEFC_MMD4 150-200/11R_400_Three Phase	Phases	3~
30	Specific design	IE3 / 50 Hz / Pole pairs 2	Frame size	160
31	Rated power kW	11	Weight kg	108
32	Number of poles	4	Electric voltage V	400
33	Speed rpm	1470	Electric current A	22.4
34	Degree of protection	IP 55		
35				

Remarks

Performance Curve

Pump Name

MMD4 150-200/11R QQPFF

Customer	Date	2024-06-16	Company
Contact	Item no.		Issued by
Phone	Project		Phone
E-mail	Project ID	Proiect redenumit 2024-06-16 15:45:44	E-mail

Requested data

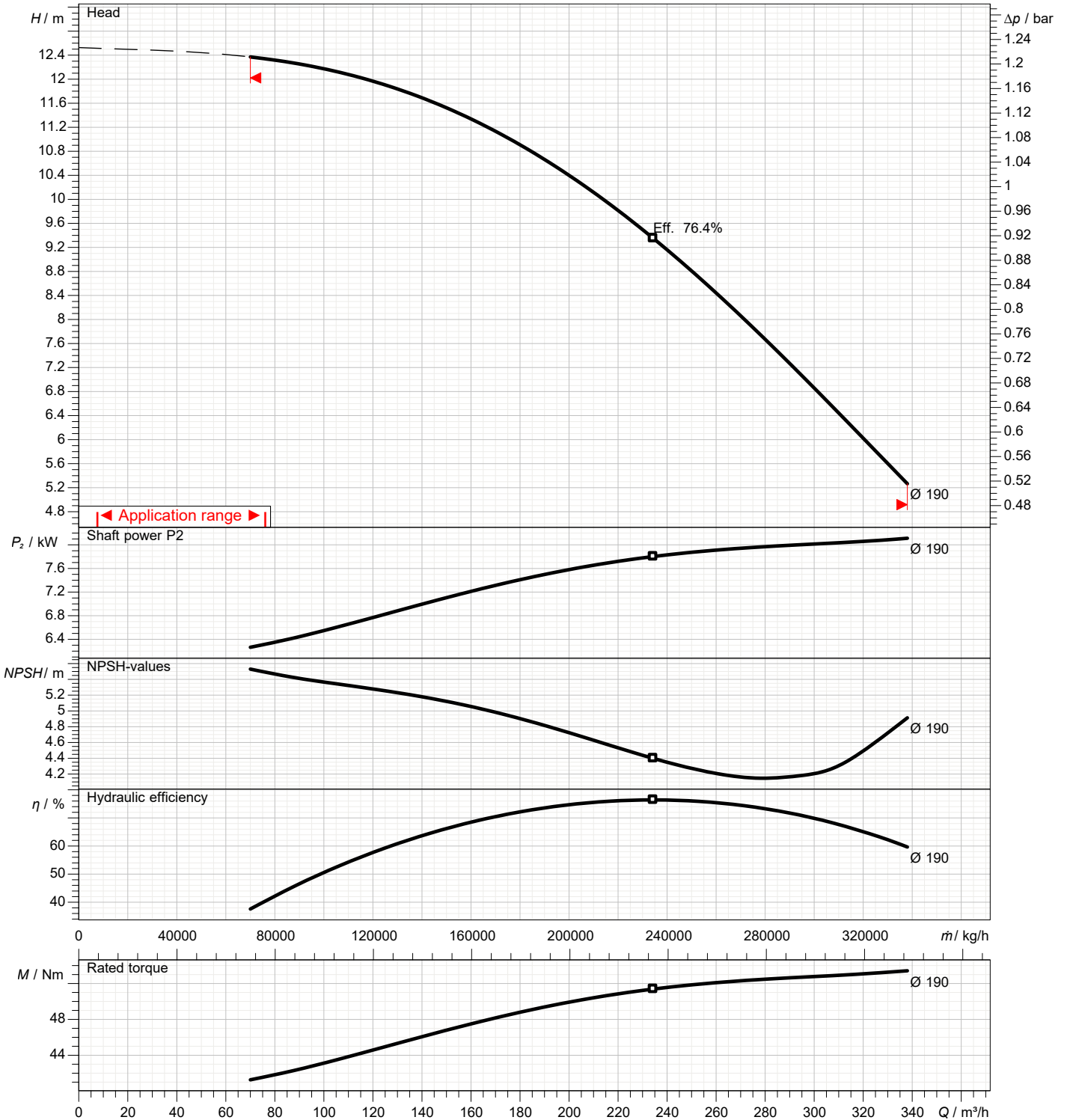
1	Flow	m³/h	
2	Head	m	
3	Geodetic head	m	

Pump

Operating flow	m³/h		Frequency	Hz	50
Operating head	m		Number of poles		4
Impeller diameter designed	mm	190	Speed	rpm	1450

Test standard: ISO 9906:2012 - Grade3B

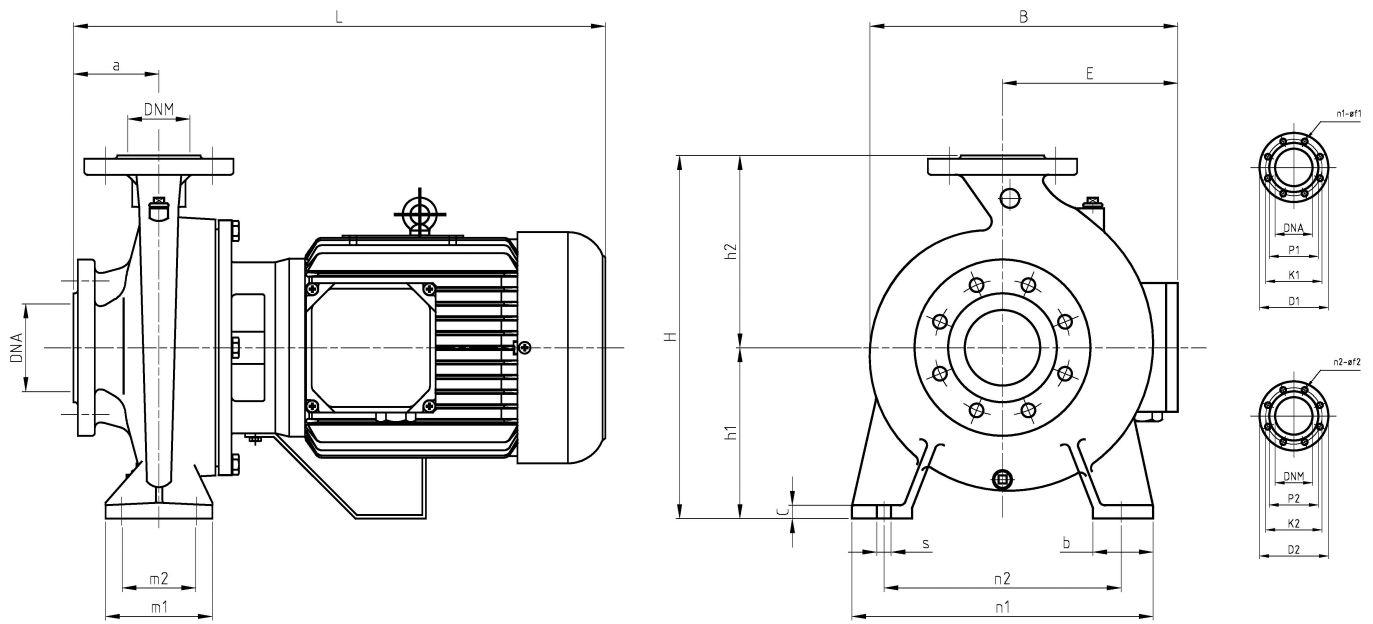
Water; 20°C; 998.3kg/m³; 1mm²/s



Dimensions

Pump name MMD4 150-200/11R QQPFF

Customer	Date 2024-06-16	Company
Contact	Item no.	Issued by
Phone	Project	Phone
E-mail	Project ID Proiect redenumit 2024-06-16 15:45:44	E-mail



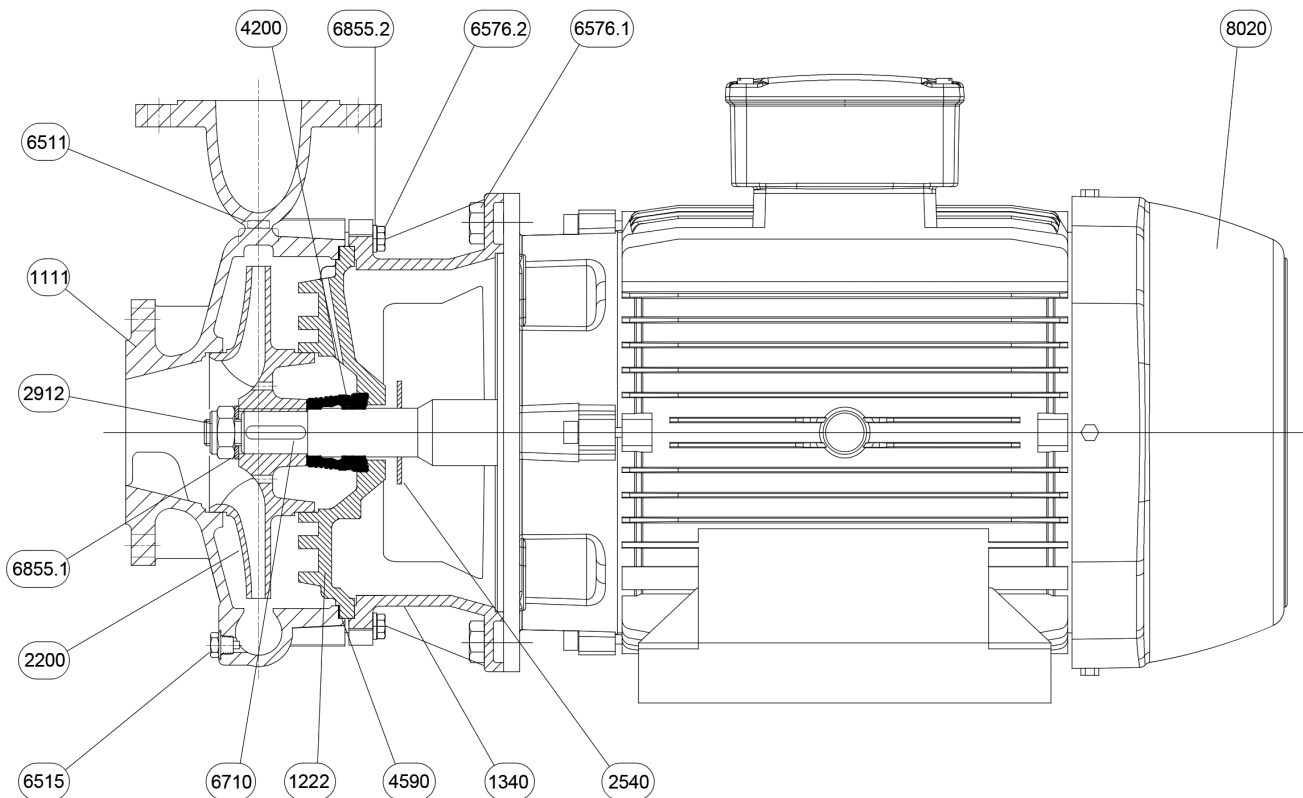
Dimensions in		mm	
1	a	160	Dia P2 212
2	b	100	E 238
3	B	550	H 680
4	C	22	h1 280
5	Dia D1	340	h2 400
6	Dia D2	285	L 810
7	Dia DNA	200	m1 200
8	Dia DNM	150	m2 155
9	Dia f1	22	n1 550
10	Dia f2	22	n2 450
11	Dia K1	295	s 24
12	Dia K2	240	Weight P&M 223 kg
13	Dia n1	12	
14	Dia n2	8	
15	Dia P1	268	

(1/2)

Construction

Pump name MMD4 150-200/11R QQPFF

Customer	Date 2024-06-16	Company
Contact	Item no.	Issued by
Phone	Project	Phone
E-mail	Project ID Proiect redenumit 2024-06-16 15:45:44	E-mail



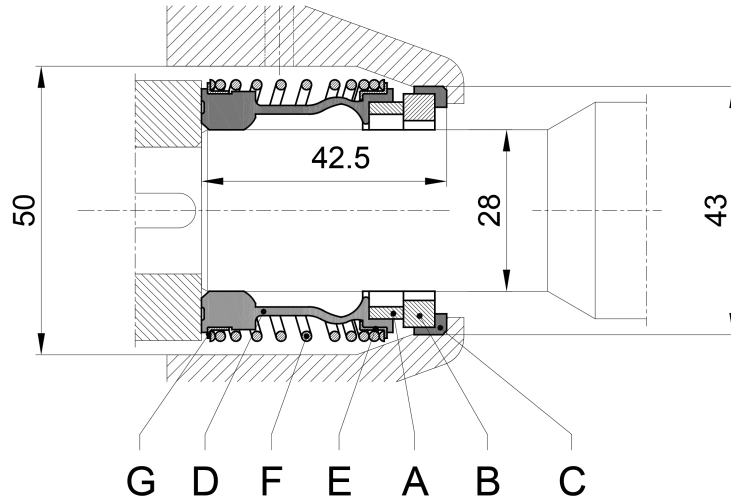
N°	PART NAME	MATERIAL	Q.TY
1111	Pump casing	EN-GJL-200	1
1222	Gland cover	EN-GJL-200	1
1340	Lantern	EN-GJL-200	1
2200	Impeller nut	EN-GJL-200	1
2540	Baffle	NB 70	1
2912	Impeller nut	6.8-ZN	1
4200	Mechanical seal	Sic/Sic/NBR/AISI 304	1
4590	Gasket	AF1600	1
6511	Refil plug	EN-GJMB-350-10	1
6515	Drain plug	EN-GJMB-350-10	1
6576.1	Hexagonal head screw	8.8-ZN	4
6576.2	Hexagonal head screw	8.8-ZN	12
6710	Key	C50	1
6855.1	Impeller washer	R40-ZN	1
6855.2	Washer	R40-ZN	12
8020	Motor		1

(2/2)

Construction

Pump name MMD4 150-200/11R QQPFF

Customer	Date 2024-06-16	Company
Contact	Item no.	Issued by
Phone	Project	Phone
E-mail	Project ID Proiect redenumit 2024-06-16 15:45:44	E-mail



Ref.	Name	Material
A	Rotary seal ring	Carbon
B	Stationary seal ring	Silicon Carbide
C	Gasket	EPDM
D	Bellows	EPDM
E	Spring plate	AISI 304
F	Spring	AISI 304
G	Spring plate	AISI 304