

Technical Data

Pump Name

MMD4 50-160/0.92

Customer	Date	2024-06-16	Company
Contact	Item no.		Issued by
Phone	Project		Phone
E-mail	Project ID	Proiect redenumit 2024-06-16 15:45:44	E-mail

Requested data

1	Pump type	MONOBLOC CENTRIFUGAL ELECTRIC PUMF	Fluid	Water
2	Number of pumps / Reserve	1 / 0	Liquid temperature	°C
3	Flow	m³/h	Kin. viscosity	mm²/s
4	Head	m	Vapour pressure	bar
5	Geodetic head	m	PH value	
6	Inlet pressure (pin)	bar	Density	kg/m³
7	Available system NPSH		Solids	Weight %
8	Ambient temperature	°C		

Pump

9	Pump Name	MMD4 50-160/0.92	Frequency	Hz	50		
10	Design	MONOBLOC CENTRIFUGAL ELECTRIC PUMF	Installation type		STANDARD		
11	Manufacturer	EBARA	Impeller Diameter	Max.	mm		
12	Speed	rpm		1500	Designed	mm	
13	No. of Stage	1		Min.	mm	160	
14	Connection	Suction side	Flow	Operating	m³/h		
15	Connection	Discharge side		Max-	m³/h	36	
16	Max Working Pressure	bar		Min-	m³/h	12	
17	Shut-off head	bar	0.89	Head	Operating	m	
18	Total weight	kg	See the table of "Dimensions".		- (Qmax.)	m	5.5
19	Shaft power	kW			- (Qmin.)	m	9.0
20				Max. Shaft Power at max. impeller	kW	0.86	
21	Required pump NPSH	m		Efficiency	%		

Materials

22				
23				
24				
25				
26				
27				

Motor

28	Manufacturer	EPE Standard	Insulation class	F	
29	Type	TEFC_MMD4 50-160/0.92_230_Three Phase	Phases	3~	
30	Specific design	- / 50 Hz / Pole pairs 2	Frame size		
31	Rated power	kW	0.92	Weight	kg
32	Number of poles	4	Electric voltage	V	230
33	Speed	rpm	1500	Electric current	A
34	Degree of protection	IP 55			
35					

Remarks

Performance Curve

Pump Name

MMD4 50-160/0.92

Customer	Date	2024-06-16	Company
Contact	Item no.		Issued by
Phone	Project		Phone
E-mail	Project ID	Project redenumit 2024-06-16 15:45:44	E-mail

Requested data

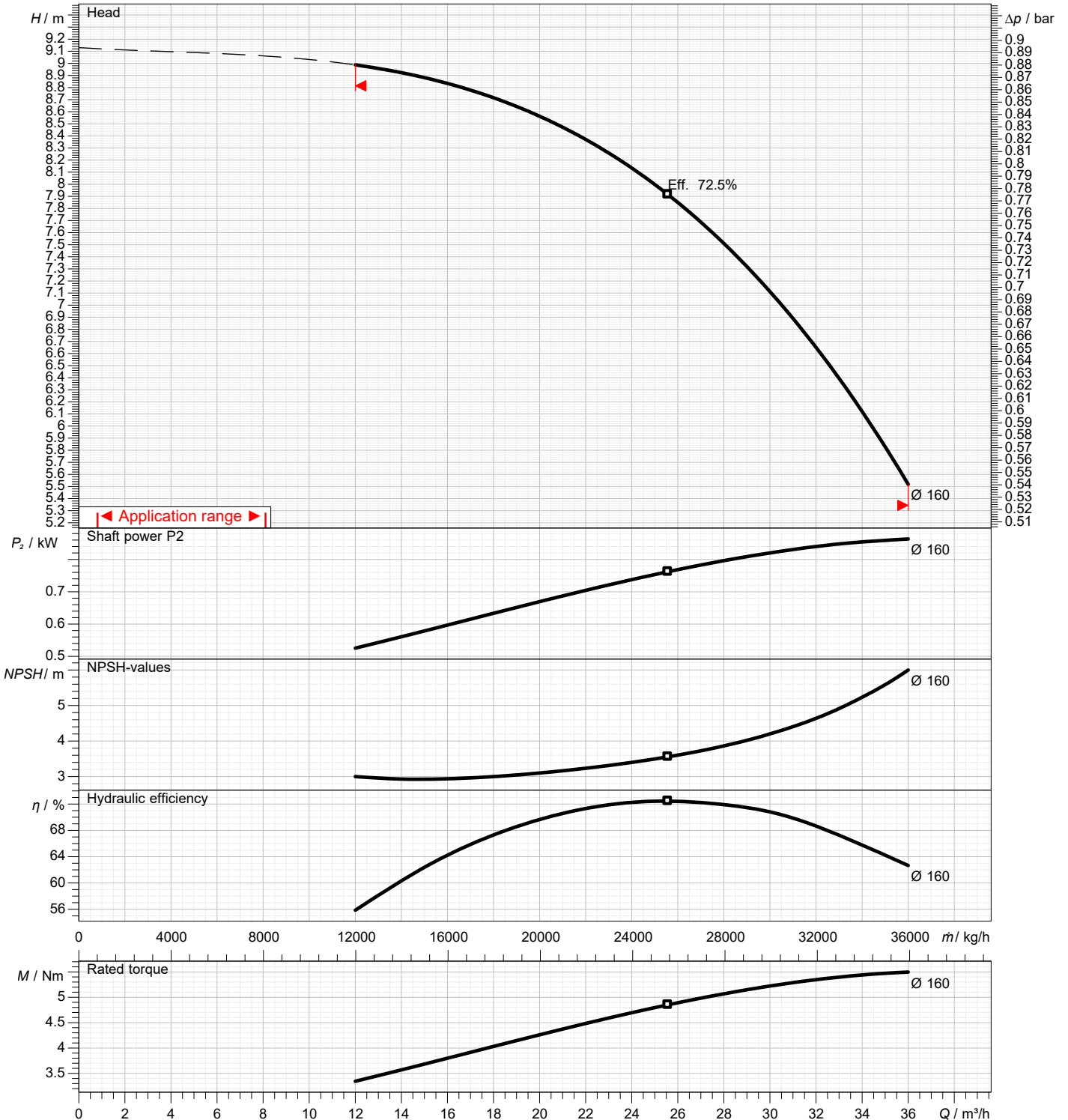
1	Flow	m³/h	
2	Head	m	
3	Geodetic head	m	

Pump

Operating flow	m³/h		Frequency	Hz	50
Operating head	m		Number of poles		4
Impeller diameter designed	mm	160	Speed	rpm	1500

Test standard: ISO 9906:2012 - Grade3B

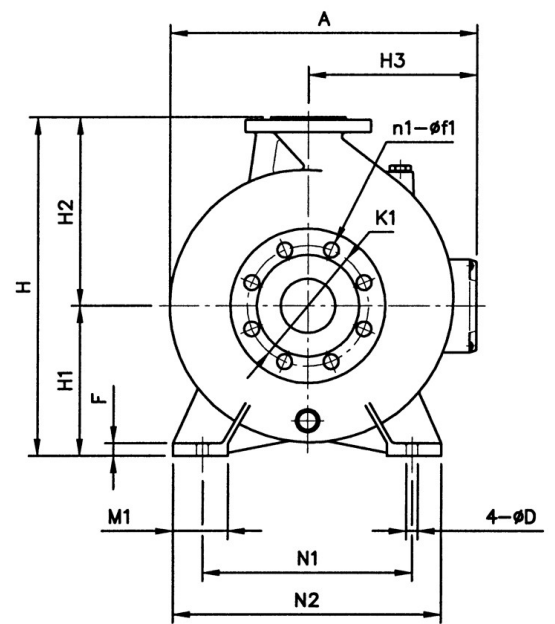
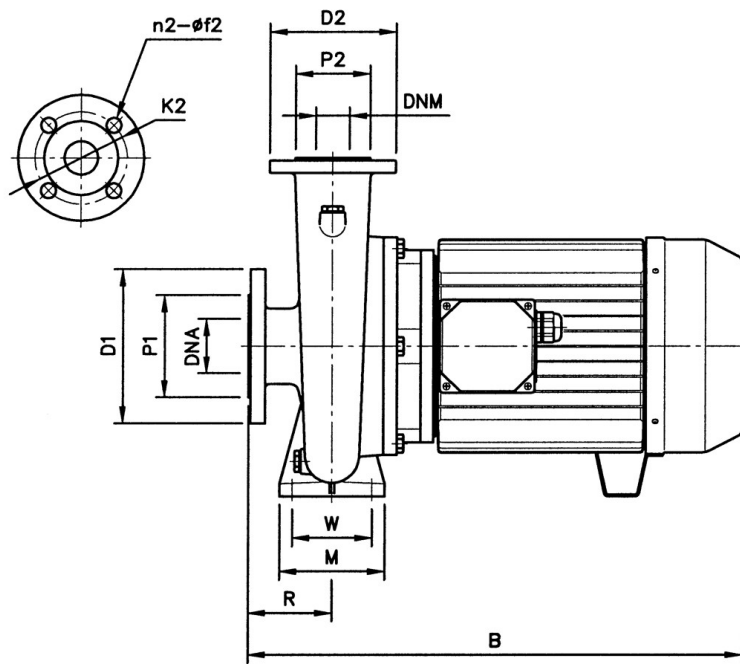
Water; 20°C; 998.3kg/m³; 0mm²/s



Dimensions

Pump name MMD4 50-160/0.92

Customer	Date 2024-06-16	Company
Contact	Item no.	Issued by
Phone	Project	Phone
E-mail	Project ID Proiect redenumit 2024-06-16 15:45:44	E-mail



Dimensions in		mm		
1	A	269	K2	125
2	B	445	M	100
3	D	14	M1	50
4	D1	185	n1	4
5	D2	165	N1	212
6	DNA	65	n2	4
7	DNM	50	N2	265
8	F	12	P1	122
9	f1	18	P2	102
10	f2	18	R	100
11	H	340	W	70
12	H1	160	Weight kg	33
13	H2	180		
14	H3	118		
15	K1	145		

Construction

Pump name MMD4 50-160/0.92

Customer	Date	2024-06-16	Company
Contact	Item no.		Issued by
Phone	Project		Phone
E-mail	Project ID	Proiect redenumit 2024-06-16 15:45:44	E-mail