

Technical Data

Pump Name

MR B 65-70 F

Customer	Date	2024-06-16	Company
Contact	Item no.		Issued by
Phone	Project		Phone
E-mail	Project ID	Proiect redenumit 2024-06-16 15:45:44	E-mail

Requested data

1	Pump type	DOMESTIC WATER CIRCULATORS	Fluid	Water	
2	Number of pumps / Reserve	1 / 0	Liquid temperature	°C	20
3	Flow	m³/h	Kin. viscosity	mm²/s	1.005
4	Head	m	Vapour pressure	bar	0.0234
5	Geodetic head	m	PH value		
6	Inlet pressure (pin)	bar	Density	kg/m³	998.3
7	Available system NPSH		Solids	Weight %	0
8	Ambient temperature	°C	20		

Pump

9	Pump Name	MR B 65-70 F	Frequency	Hz	50		
10	Design	DOMESTIC WATER CIRCULATORS	Installation type		STANDARD		
11	Manufacturer	EBARA	Impeller Diameter	Max.	mm	0	
12	Speed	rpm		1370	Designed	mm	
13	No. of Stage	1		Min.	mm	0	
14	Connection	Suction side	Flow	Operating	m³/h		
15	Connection	Discharge side		Max-	m³/h	34.8	
16	Max Working Pressure	bar		10	Min-	m³/h	6
17	Shut-off head	bar	0.58	Head	Operating	m	
18	Total weight	kg	See the table of "Dimensions".		- (Qmax.)	m	1.2
19	Shaft power	kW			- (Qmin.)	m	5.6
20			Max. Shaft Power at max. impeller	kW	0.56		
21	Required pump NPSH	m	Efficiency	%			

Materials

22	Impeller	AISI 304		
23	Casing	Bronze		
24	Shaft	AISI 431		
25				
26				
27				

Motor

28	Manufacturer	EPE Standard	Insulation class	H		
29	Type	MR B 65-70 F_400_Three Phase	Phases	3~		
30	Specific design	- / 50 Hz / Pole pairs 1	Frame size			
31	Rated power	kW	Weight	kg		
32	Number of poles	2	Electric voltage	V	400	
33	Speed	rpm	1370	Electric current	A	1.25
34	Degree of protection	IP 43				
35						

Remarks

--

Performance curve

Pump name **MR B 65-70 F**

Customer	Date	2024-06-16	Company
Contact	Item no.		Issued by
Phone	Project		Phone
E-mail	Project ID	Proiect redenumit 2024-06-16 15:45:44	E-mail

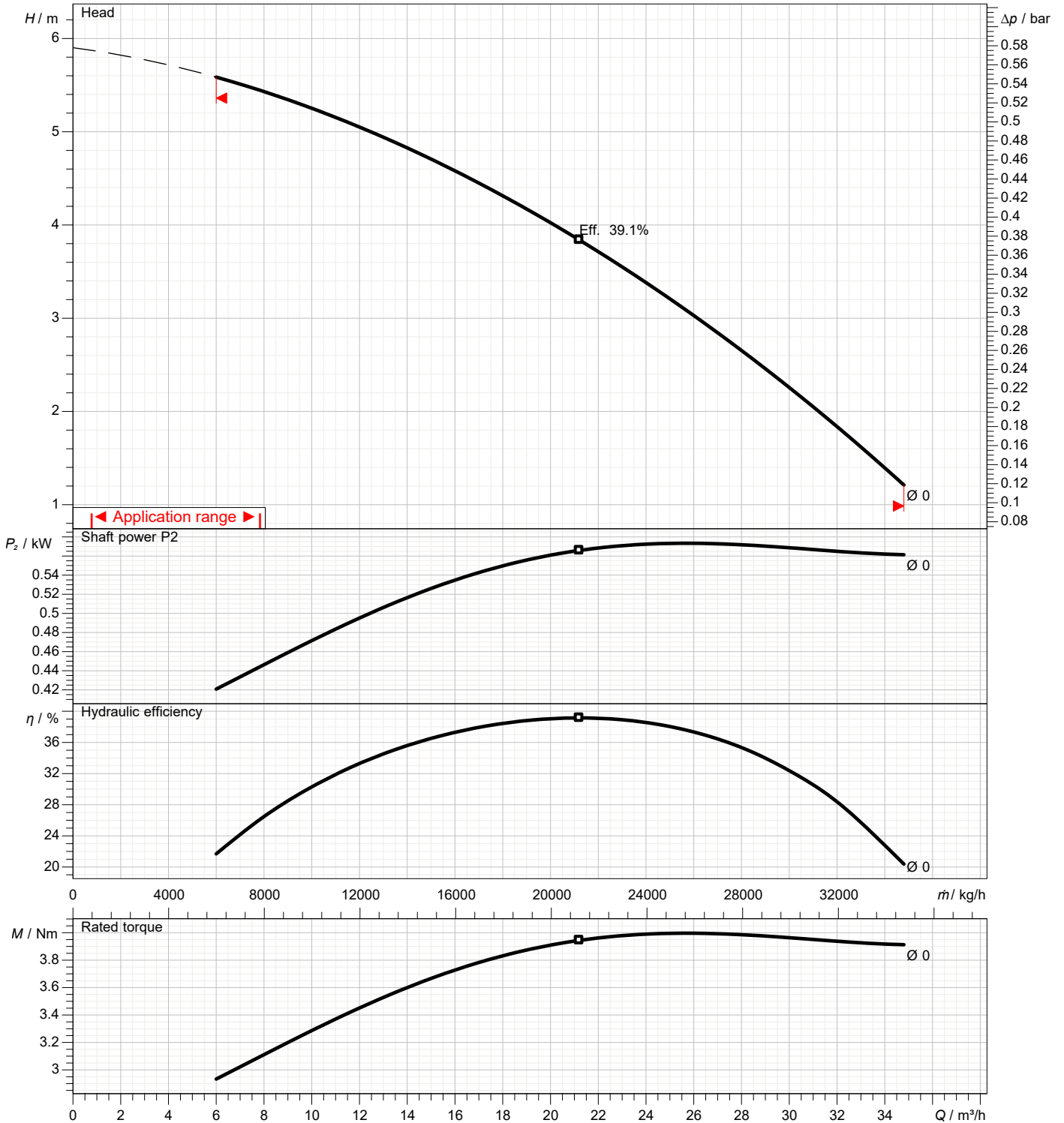
Requested data

1	Flow	m ³ /h	
2	Head	m	
3	Geodetic head	m	

Pump

Operating flow	m ³ /h		Impeller Diameter Designed	mm	
Operating head	m		Frequency	Hz	50
			Speed	rpm	1370

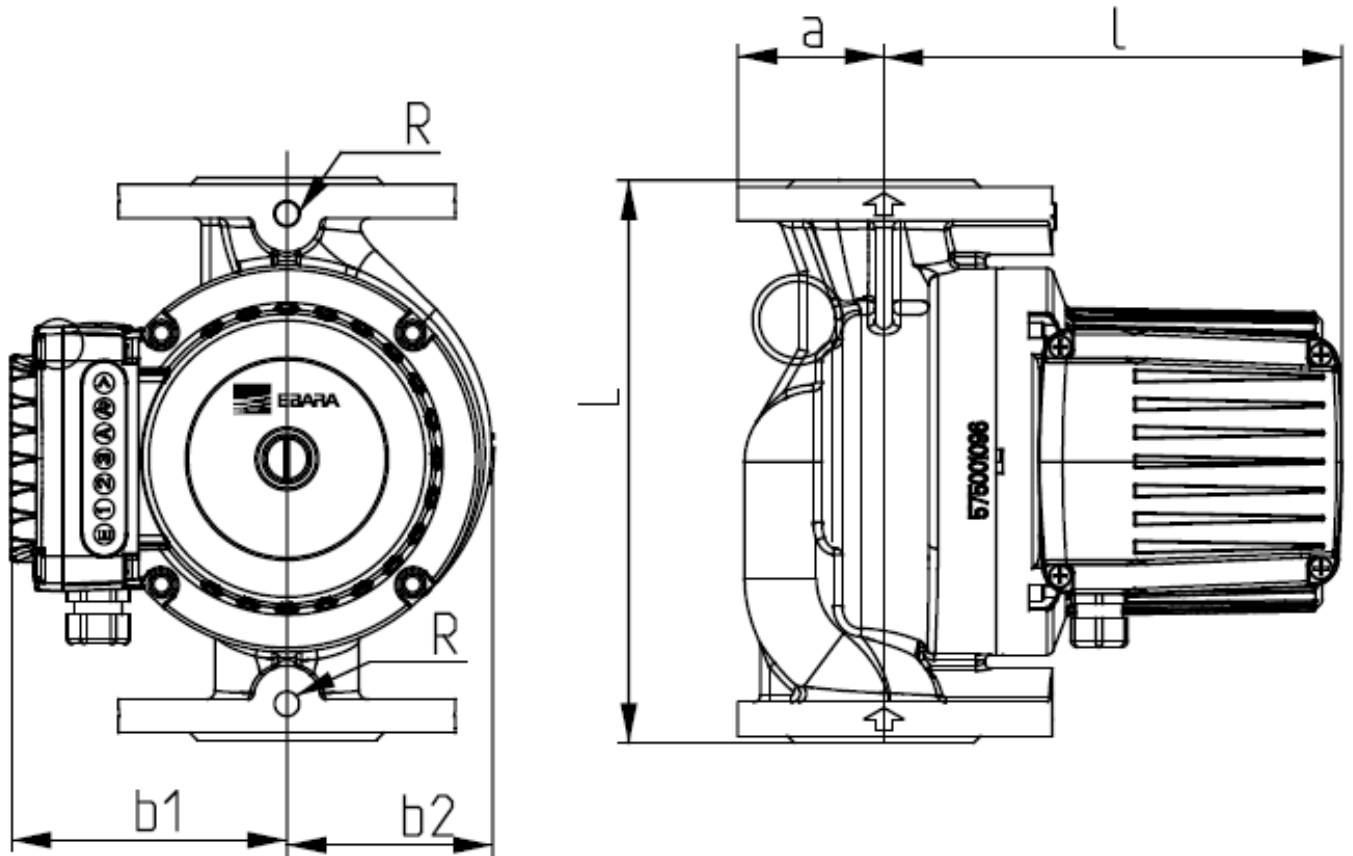
Water; 20°C; 998.3kg/m³; 1mm²/s



Dimensions

Pump name MR B 65-70 F

Customer	Date 2024-06-16	Company
Contact	Item no.	Issued by
Phone	Project	Phone
E-mail	Project ID Proiect redenumit 2024-06-16 15:45:44	E-mail



Pump dimensions		mm					
a	80						
b1	160						
b2	123						
l	252						
L	340						
R	1/4"						
Weight P&M	36 kg						

In case of dimension value * : Please contact EBARA Sales Company.