

## Tender text

**Project name**

**Project ID**

**Customer**

Contact

E-mail

Phone

**Company**

Contact

E-mail

Phone

2025-01-20

Page 1 / 5

Pos.no	Description	Item no.
	<b>Volute casing pump</b>	
	Centrifugal pump: Etanorm 065-050-250/2202 GG	05119868
	<b>Etanorm</b>	
	Horizontal single-stage volute casing pump, ratings to EN 733, radially split volute casing with integrally cast pump feet, long-coupled design. The pump is designed with replaceable casing wear rings, closed radial impeller with multiply curved vanes, single mechanical seal or double mechanical seals to EN 12756, shaft equipped with replaceable shaft protecting sleeve in the shaft seal area. The back pull-out design allows the coupling, bearing brackets and impeller to be dismantled without the need to disconnect the pump casing from the piping.	
	<b>Operating data</b>	
	Fluid handled	: Water
	Flow rate	:
	Head	:
	Fluid temperature	: 20,00 °C
	Permissible fluid temperature (min./max.)	: 0 bis +110
	Maximum operating pressure	: ≤ 16 bar
	Ambient temperature (min./max.)	: -10 to +50°C
	<b>Motor/electronics</b>	
	MEI value	: ≥ 0,4
	Motor rating	: 22 kW
	Max. rated current	: 41,2 A
	Speed	: 500 1/min ... 3.600 1/min
	Power supply	: 3 x 380 V AC - 15 % to 480 V AC +10 %
	Motor size	: 180M
	Energy efficiency class	:
	Enclosure	: IP55
	Motor make	: KSW - IEC
	<b>Materials</b>	
	Pump casing (102)	: Grey cast iron JL1040
	Impeller (230)	: Steel/tempered steel E335/C45
	Pump shaft (210)	: Grey cast iron JL1040
	Casing cover (161)	: Grey cast iron JL1040
	Casing wear ring, suction side (502.01):	DPAF seal plate, asbestos-



## Tender text

**Project name**

**Project ID**

**Customer**

Contact

E-mail

Phone

**Company**

Contact

E-mail

Phone

2025-01-20

Page 2 / 5

---

Pos.no	Description	Item no.	Qty.	UP / EUR	TP / EUR
	free				
	Casing wear ring, discharge side (502.02): Grey cast iron GG / cast iron				
	Shaft seal type				
	: Single mechanical seal, conical casing cover				
	Shaft seal material				
	:10 = Q1Q1X4GG				
	<b>Installation</b>				
	Installation type				
	: Baseplate for the entire pump set (pump + drive)				
	<b>Dimensions and connections</b>				
	Nominal size of discharge nozzle DN2				: DN 50
	Nominal diameter of suction nozzle DN1				: DN 65
	Nominal pressure, suction side				: 16
	Nominal pressure, discharge side				: 16
	<b>Purchase order information</b>				
	Approx. net weight				: 308,4 kg
	Make				: KSB
	Type				: Etanorm 065-050-250/2202 GG
	Material price group				: 55
	<b>Material number</b>				: 05119868

---

**Data sheet: technical data**

**Project name**  
**Project ID**

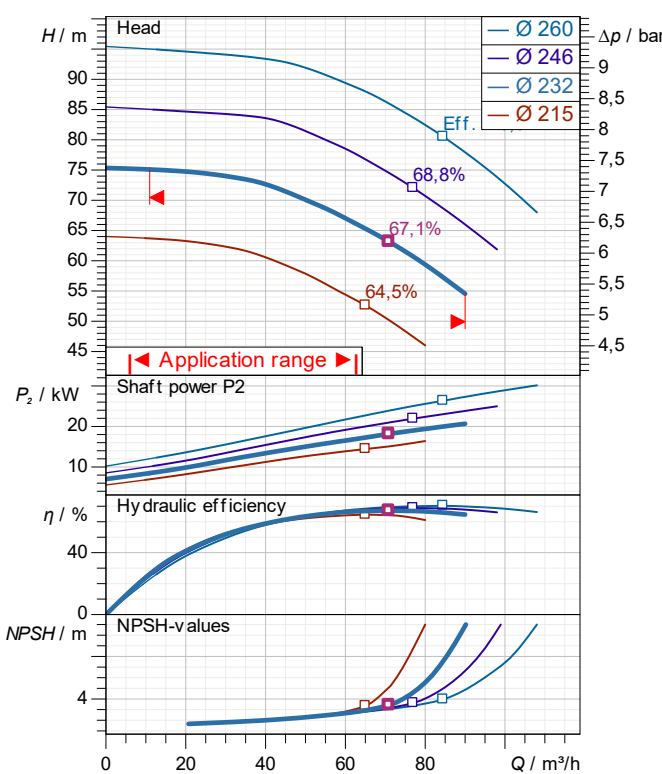
**Item-No.**  
**Design**                    **Volute casing pump**  
**Type / Coding**            **Etanorm 065-050-250/2202 GG**

**Customer**  
Contact  
E-mail  
Phone

**Company**  
Contact  
E-mail  
Phone

2025-01-20

Page 3 / 5



**demand data**

Flow  
Head  
Geodetic head  
Media                            Water  
Liquid temperature        20 °C  
Concentration                100 %

**Pump data**

Make                             KSB  
Type                             Etanorm 065-050-250/2202 GG  
Design                         Volute casing pump  
Specific design                Single head pump  
Max. fluid temperature     140 °C

**Hydraulic data (Duty point)**

Flow  
Head  
Efficiency  
Minimum Efficiency Index     $\geq 0,4$

**Material / sealing element**

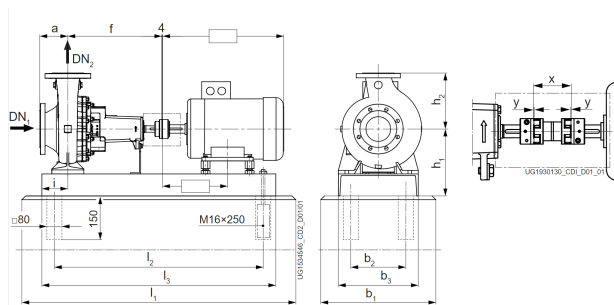
Volute casing                 Grey cast iron JL1040  
Discharge cover             Grey cast iron JL1040  
Shaft                             Steel/tempered steel E335/C45  
Impeller                         Grey cast iron JL1040  
Bearing bracket lantern     DPAF seal plate, asbestos-free  
Casing wear ring             Grey cast iron GG / cast iron

**Motor data**

Power uptake                 23,7 kW  
Rated power                  22 kW  
Speed                            2.950 1/min  
Rated voltage                 400 V  
Rated current                 41,2 A  
Degree of protection        IP55

**Product information**

Ident. No./ type key         05119868  
Weight loaded                308,4 kg  
Gross price                    12.432,66 EUR  
PL 2025-01-20  
Price group                    55



**Data sheet: performance curve**

**Project name**  
**Project ID**

**Item-No.**  
**Design**                    **Volute casing pump**  
**Type / Coding**        **Etanorm 065-050-250/2202 GG**

**Customer**  
Contact  
E-mail  
Phone

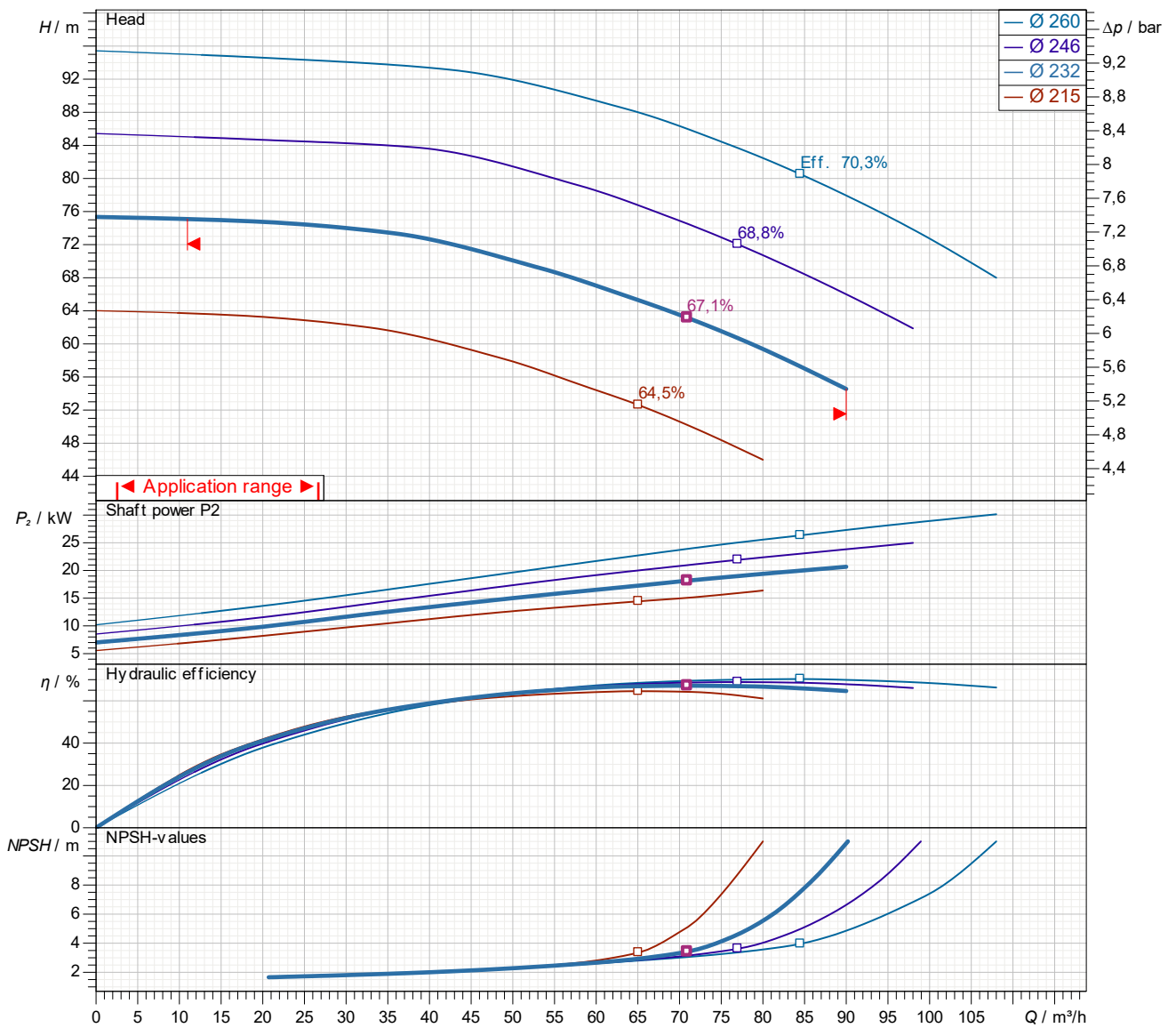
**Company**  
Contact  
E-mail  
Phone

2025-01-20

Page 4 / 5

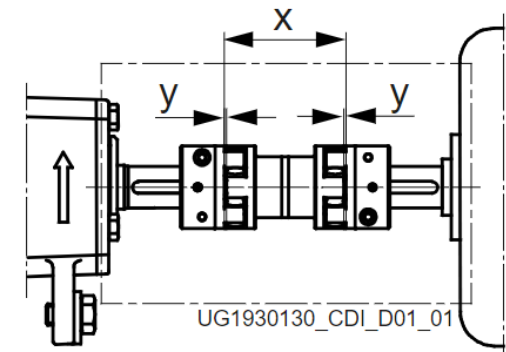
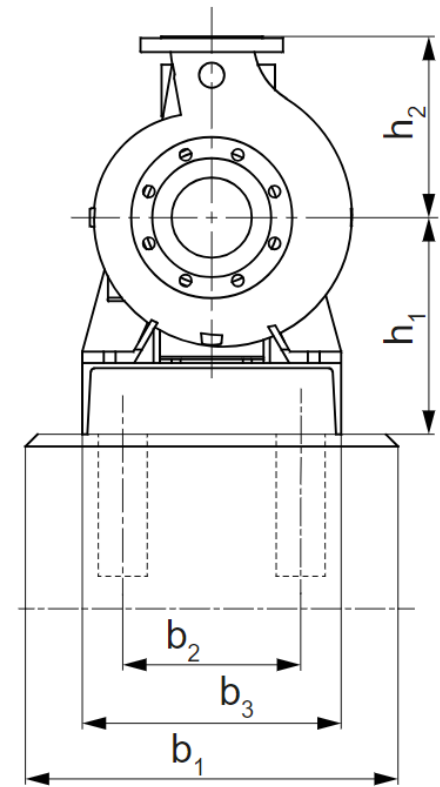
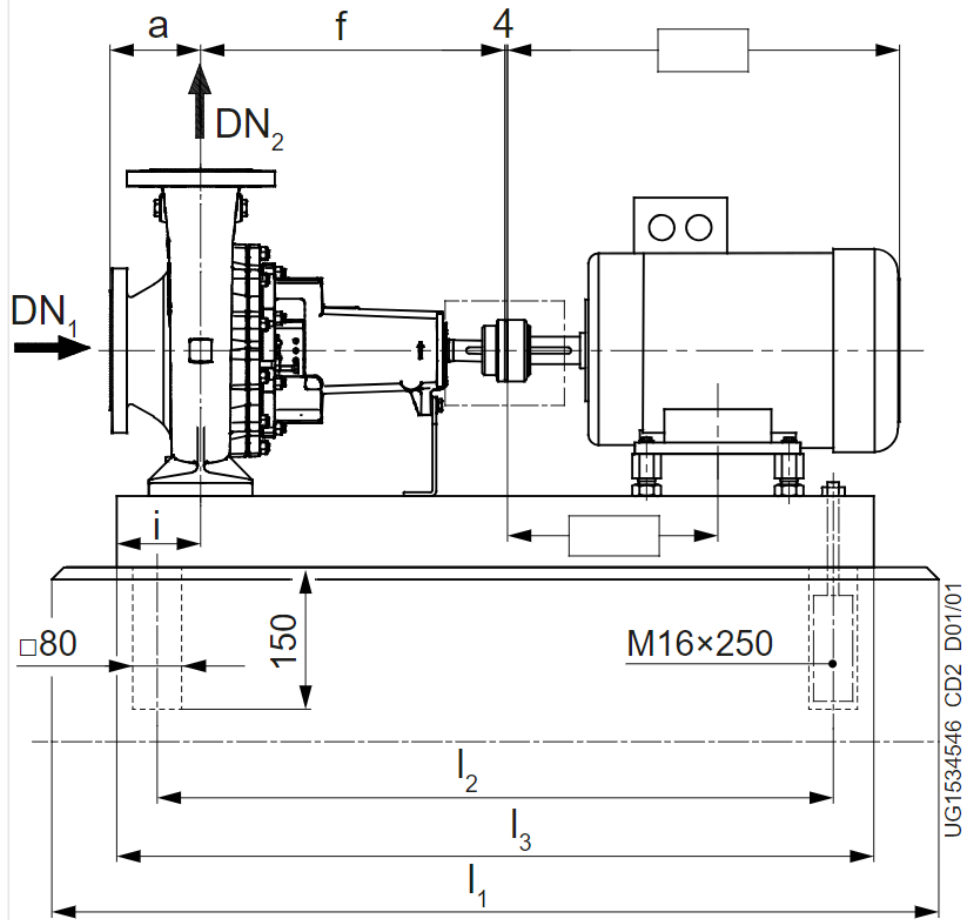
**Performance curve**

**Etanorm 065-050-250/2202 GG**



Density        998,3  $kg/m^3$   
Viscosity     1,005  $mm^2/s$

# Dimensions



Name	Wert	Name	Wert
a	100 mm	l2	1.190 mm
b1	550 mm	l3	1.250 mm
b2	320 mm	x	100 mm
b3	400 mm		
DN1	65 mm		
DN2	50 mm		
f	360 mm		
h1	290 mm		
h2	225 mm		
i	112 mm		
l1	1.400 mm		