

Tender text

Project name
Project ID

Customer
 Contact
 E-mail
 Phone

Company
 Contact
 E-mail
 Phone

2025-01-20

Page 1 / 3

Pos.no	Description	Item no.
	Submersible dirty water motor pumps	
	AmaDrainer A 405 SE / 10	29128650
	Ama-Drainer A 405 E / 10	
	Vertical single-stage fully floodable submersible motor pump in close-coupled design, IP68, with level control, max. immersion depth: 7m.	
	<ul style="list-style-type: none"> - Connection socket or discharge elbow with internal thread - 10-metre power cable - With float switch 	
	Operating data	
	Fluid handled	: Water
	Flow rate Q	:
	Head H	:
	Permissible fluid temperature	: max.40°C in continuous duty
	Drive	
	Supply voltage	: 1~ 230 / 50 Hz
	Frequency	: 50 Hz
	Nominal power P1	: 0,9002 kW
	Motor rating P2	: 0,55 kW
	Nominal current	: 3,50 A
	Enclosure	: IP68
	Motor winding to	: IEC 60038
	Motor design to	: EN 60043 T1/IEC 34-1
	Thermal class	: F
	Starting method	: DOL
	Pump controlled via integrated float switch	
	Materials	
	Pump casing	: Chrome nickel steel (1.4301)
	Suction cover	: Chrome nickel steel (1.4301)
	Impeller	: Polyamide (PA)
	Pump foot	: Polypropylene (PP)
	Rotor shaft	: Chrome steel (1.4021)



Tender text

Project name
Project ID

Customer
Contact
E-mail
Phone

Company
Contact
E-mail
Phone

2025-01-20

Page 2 / 3

Pos.no	Description	Item no.	Qty.	UP / EUR	TP / EUR
	Dimensions				
	Free passage	: 10 mm			
	Discharge side	: DN 40			
	Length	: 300 mm			
	Width	: 440 mm			
	Height	: 280 mm			
	Purchase order information				
	Manufacturer	: KSB			
	Type series / size	: Ama-Drainer A 405 E / 10			
	Material price group	: 32			
	Weight	: 12,7 kg			
	Item number	: 29128650			

Data sheet: technical data

Project name
Project ID

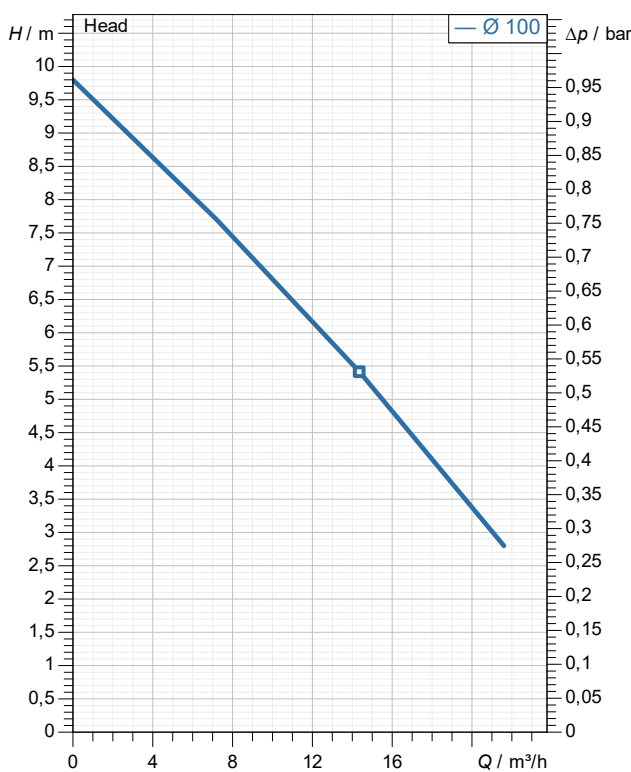
Item-No.
Design **Submersible dirty water motor pumps**
Type / Coding **AmaDrainer A 405 SE / 10**

Customer
Contact
E-mail
Phone

Company
Contact
E-mail
Phone

2025-01-20

Page 3 / 3



demand data

Flow
Total head
Geodetic head
Media Water
Liquid temperature 20 °C

Pump data

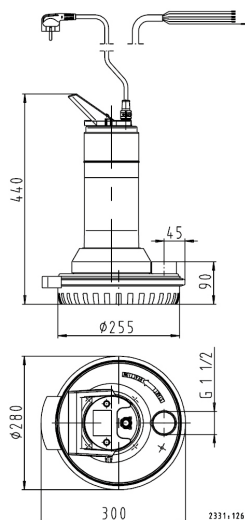
Make KSB
Type AmaDrainer A 405 SE / 10
Design Submersible dirty water motor p
Specific design Single head pump
No. of pumps 1
Standby pump No
Max. fluid temperature 40 °C

Hydraulic data (Duty point)

Flow
Head

Material / sealing element

Pump casing Stainless steel 1.4301
Volute casing ACRYLONITRILE BUTADIENE STYRENE
Shaft Chrome steel 1.4021+QT800
Impeller Polyamide (PA)
O-ring Nitrile rubber NBR
Float switch POLYPROPYLENE (PP)



Dimensions

Discharge flange standard DN 40

Rated motor data

Power input (P1) 0,9 kW
Rated power (Pn) 0,55 kW
Speed 2.800 1/min
Rated voltage 230 V
Rated current (In) 3,5 A

Product information

Ident. No./ type key 29128650
Weight loaded 12,7 kg
Gross price 1.257,57 EUR
PL 2025-01-20
Price group 32