

Customer

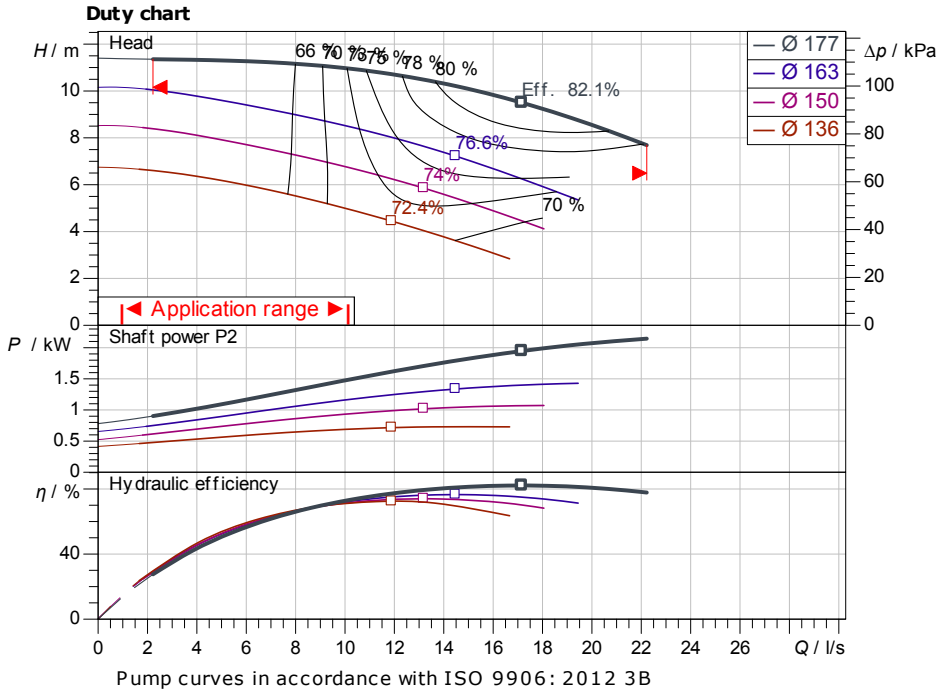
Technical data

Glanded standard pump
Atmos GIGA-N 65/160-4-B-IE4

Project ID Untitled project 2025-03-01 20:23:09.313

Project name
Installation location
Customer pos. No.

Date 2025-03-01



Requested data

Flow
Head
Media Water 100 %
Fluid temperature 20.00 °C
Density 998.30 kg/m³
Kin. viscosity 1.00 mm²/s

Hydraulic data (Duty point)

Flow
Head
Shaft power P_2
Hydraulic efficiency
NPSH
Impeller size 177

Product data

Glanded standard pump
Atmos GIGA-N 65/160-4-B-IE4
Max. operating pressure 1,600 kPa
Fluid temperature -20 °C ... +140 °C
Max. ambient temperature 40 °C
Minimum efficiency index (MEI)

Motordata per Motor/Pump

Motor efficiency level
Mains connection V / Hz
Permitted voltage tolerance
Max. speed
Rated power P_2
Rated current
Power factor
Efficiency
50% / 75% / 100% //%

Fitting dimensions

Pipe connection on the suction side DN 80, PN 16
Pipe connection (pressure side) DN 65, PN 16
Port to Port

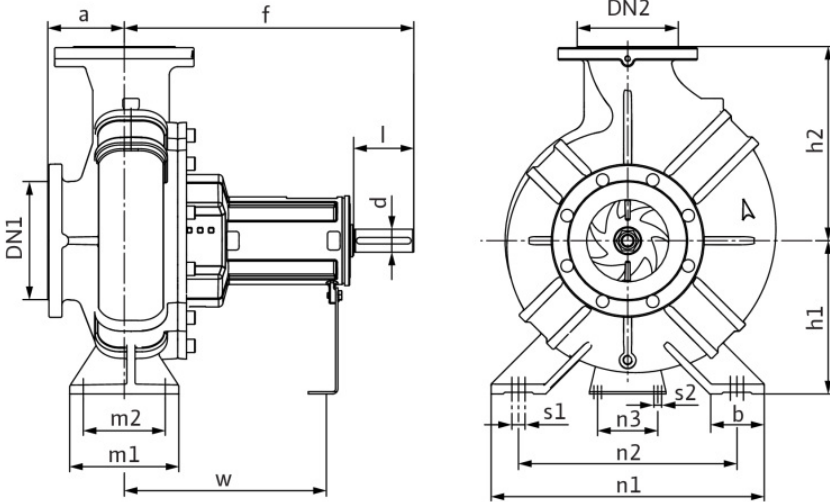
Materials

Pump housing 5.1301/EN-GJL-250

Impeller EN-GJL-200
Lantern 5.1301/EN-GJL-250
Shaft 1.4021
Shaft seal AQ1EGG

Information for order placements

Weight approx.
Item number



Dimensions

mm

a	100	DN2	DN 65, P	h2	200	n2	212
b	65	f	360	l	50	n3	110
d	24	h1	160	m1	125	Ø k	160
dL	19	h1	160	m2	95	Ø d	132
DN1	DN 80, P	h2	200	n1	280	Ø D	200

Hydraulic data

Glanded standard pump
Atmos GIGA-N 65/160-4-B-IE4

Project ID: Untitled project 2025-03-01 20:23:09.313

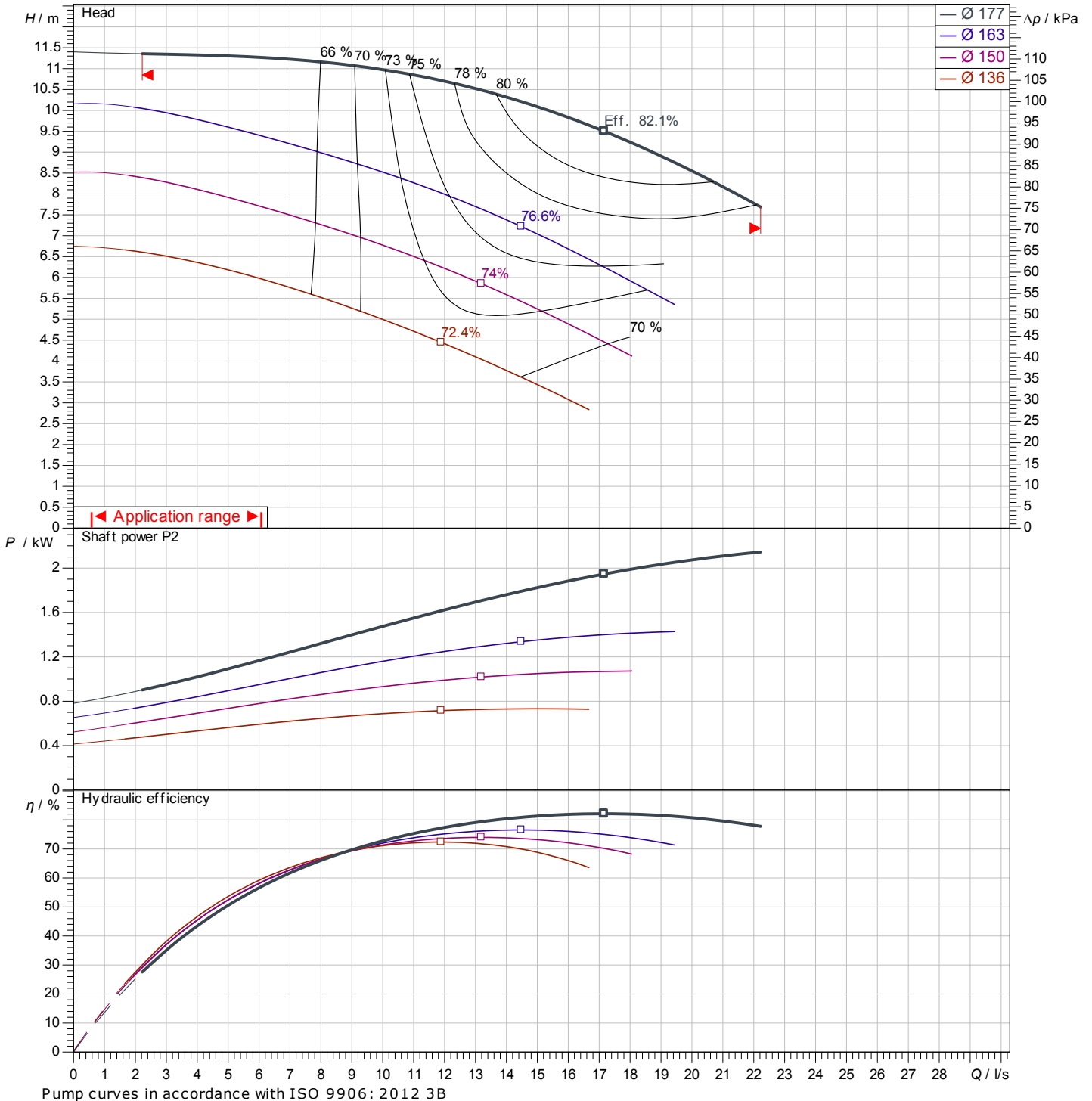
Project name
Installation location
Customer pos. No.

Date 2025-03-01

Operating data

Rotational speed 1442 1/min	Frequency Hz	Duty point Q =	H =	Suction port DN 80	Discharge port DN 65
---------------------------------------	------------------------	--------------------------	------------	------------------------------	--------------------------------

Power data referred to: Water; 20°C; 998.3kg/m³; 1.005mm²/s ±10 % tolerance with linear U/f frequency control



Pump curves in accordance with ISO 9906: 2012 3B

Customer

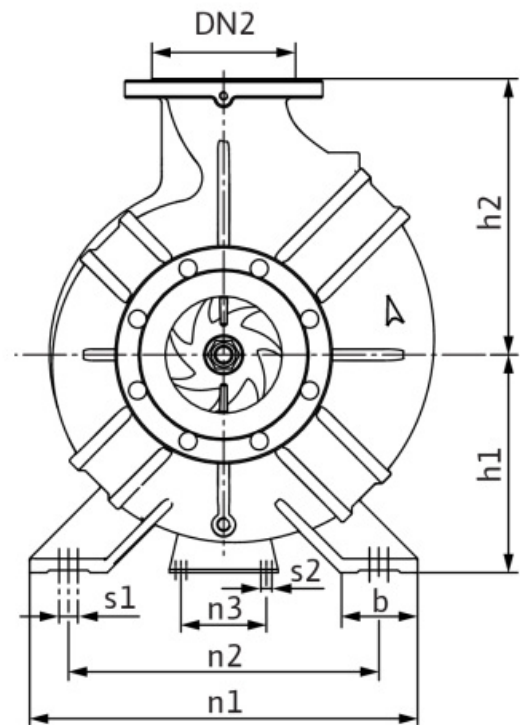
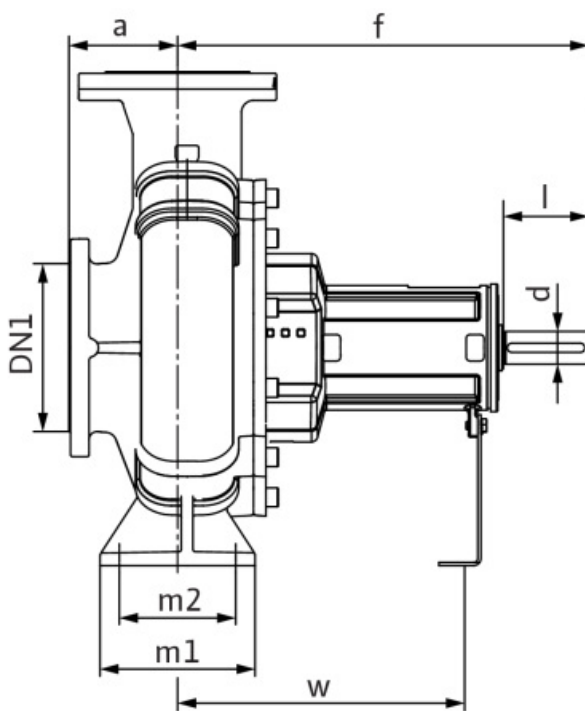
Dimensions

Glanded standard pump
Atmos GIGA-N 65/160-4-B-IE4

Project ID Untitled project 2025-03-01 20:23:09.313

Project name
Installation location
Customer pos. No.

Date 2025-03-01



Bareshaft

Suction side DN 80, PN 16
Discharge side DN 65, PN 16

Dimensions mm

Name	Value	Name	Value	Name	Value	Name	Value
a	100	h1	160	n1	280	s2	12
b	65	h1	160	n2	212	w	260
d	24	h2	200	n3	110	x	100
dL	19	h2	200	Ø k	160		
DN1	DN 80, PN 16	l	50	Ø d	132		
DN2	DN 65, PN 16	m1	125	Ø D	200		
f	360	m2	95	s1	12		