



Contact
E-mail
Phone

Customer

Contact
E-mail
Phone

Technical data

Rexa SUPRA-V10-73

With motor
FK 202-4/27

Project ID Untitled project 2025-03-05 10:17:21.271
Project name
Installation location
Customer pos. No.

Date 2025-03-05

Pump

Pump type	Rexa SUPRA-V 10-73
Installation type	Suspension device
	DN100S/2RK
Free passage	100 mm
Nominal speed	1740
Frequency	60 Hz
Impeller type	Vortex impeller
Impeller construction	Open

Impeller Ø

designed	278 mm
standard	278 mm
Max.	278 mm
Min.	178 mm

Discharge port

Pressure rating	PN10
Rated diameter	DN100
Standard	EN1092-2-D

Suction port

Pressure rating	PN10
Rated diameter	DN150
Standard	EN1092-2-S

Weight

Weight	max.	60 kg
Weight of motor		155 kg
Weight of unit	max.	215 kg

Materials

Pump housing	EN-GJL-250
Impeller	EN-GJL-250

Motor

Motor name	FK 202-4/27
Number of poles	4
Rated power	18.5 kW
Rated speed	1719 1/min
Power input with rated power	22.6 kW
Rated voltage	220/440 ~3 V
Current input with rated power	71 A
Efficiency with rated power	82 %
cos phi with rated power	0.84
cos phi with starting	0
Rated frequency	60 Hz
Operation type wet	S1
Operation type dry	S1
Starting current, direct starting	305.3 A
Starting current, star-delta	101.8 A
Starting torque	202 Nm
Inertia moment	0.0532 kg m ²
Degree of protection	IP 68
Sel. explosion protection	
Ex-designation	
Ex-number	
Motor connection cable	4x16 + 2x1,5 NSSHÖU
Max. fluid temperature	60 °C
Starts per hour max.	15

Duty point data

Volume flow	
Head	
Shaft power P ₂	
Hydr. efficiency η _{hyd.}	
Power input P ₁	
Fluid	Water
Required pump NPSH	
Rotational speed	1,701 1/min
Max. flow	11.4 l/s
Head H(Q _{max})	36.2 m
Shut off head	37.2 m
Best efficiency point Q (BEP)	33.7 l/s
Best efficiency point H (BEP)	32.5 m
Total efficiency	= $\frac{P_2 * \text{Hydr. efficiency } \eta_{\text{hyd.}}}{P}$

ArtNr



Contact
E-mail
Phone

Customer

Contact
E-mail
Phone

Technical data

Rexa SUPRA-V10-73

With motor

FK 202-4/27

Project ID Untitled project 2025-03-05 10:17:21.271

Project name

Installation location

Date 2025-03-05

Tender text

Submersible sewage pump as floodable, single-stage block unit in stationary, vertical installation for pumping of untreated sewage, which attacks the pumps neither chemically nor mechanically. Pump with radially arranged discharge piece and axial pump intake. Service-friendly unit structure by separated motor and pump housing unit. The duty values must be guaranteed according to ISO 9906, class 2B.

Submersible motor in pressure-resistant design, with internal, sealed, active circulation cooling and heat exchanger, double mechanical shaft seal in EMU block design as well as separate sealing chamber. The motor chamber and sealing chamber are filled with medical white oil.

Motor sealing at the shaft by a double, wear-resistant mechanical shaft seal independent of the direction on rotation entirely made of silicon-carbide as closed unit, in EMU sealing cartridge of stainless steel with intermediate separation chamber. Both seals are cooled and lubricated by medical white oil. The motor chamber is equipped with a terminal board. The motor is equipped with two maintenance-free ball bearings.

The upper bearing is filled with high-quality grease, the lower bearing is oil-lubricated. Possibility for retrofitting a moisture probe by means of a pencil electrode for protection against penetrating humidity. All casing parts are of cast iron.

Shaft and connecting elements are of stainless steel. The motor is suitable for continuous operation (S1) under full load in immersed and completely emerged condition.



Contact
E-mail
Phone

Customer

Contact
E-mail
Phone

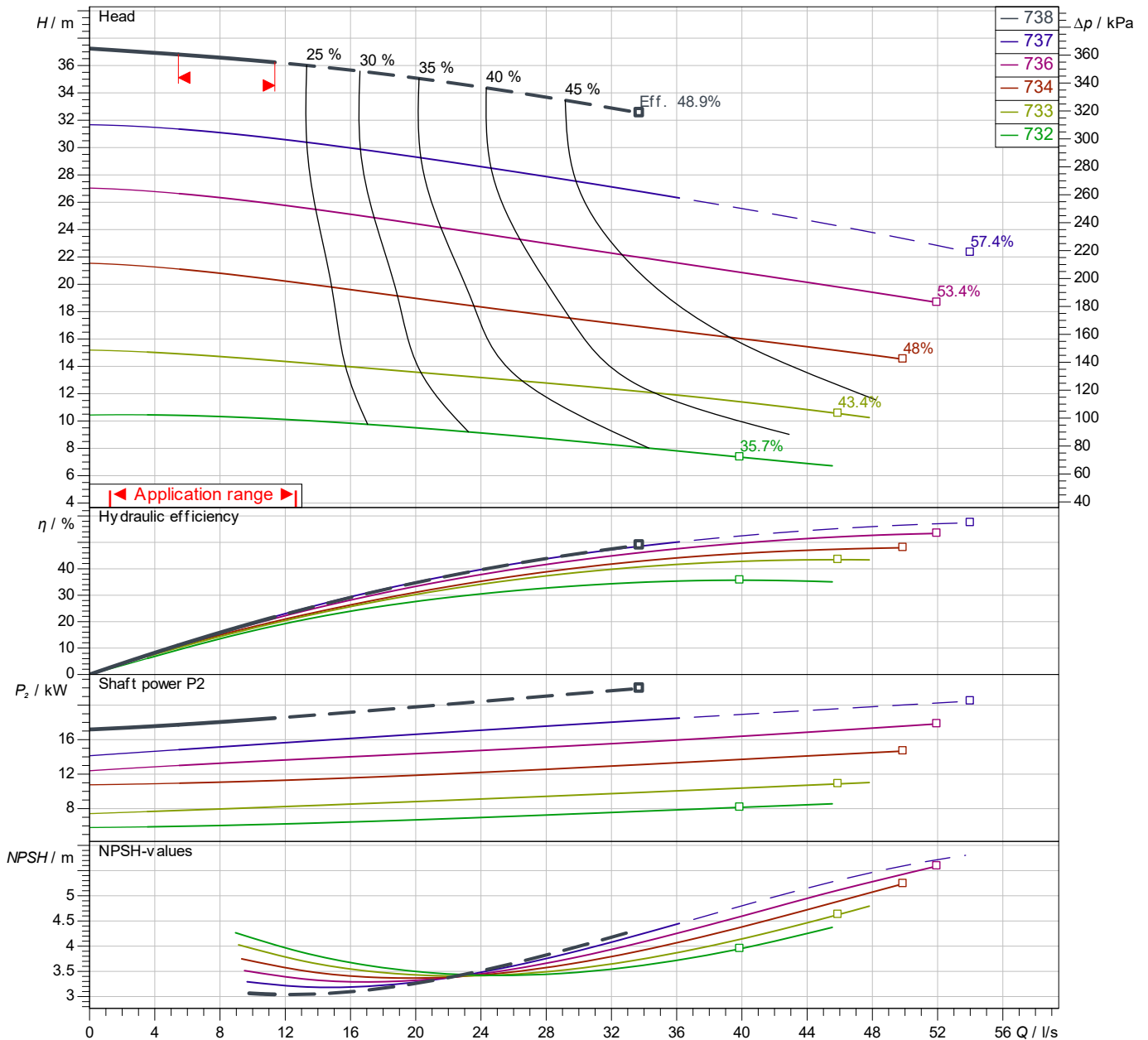
Performance curves

Rexa SUPRA-V10-73

With motor
FK 202-4/27

Project ID: Untitled project 2025-03-05 10:17:21.271
Project name
Installation location
Customer pos. No.

Date 2025-03-05



Power data referred to: Water; 20°C; 998.3kg/m³; 1.005mm²/s
Tolerance as per ISO 9906 / Annex A.2

Pump

Impeller Ø designed 278 mm
Nominal speed 1,719.1 1/min
Frequency 60 Hz
Impeller type Vortex impeller

Motor

Rated power 18.5 kW
Sel. explosion protection

Duty point data

Volume flow
Head
Shaft power P₂
Hydr. efficiency η_{hyd}.
Power input P₁
Required pump NPSH
Rotational speed 1701 1/min

Contact
E-mail
Phone

Customer

Contact
E-mail
Phone

Dimensions

Rexa SUPRA-V10-73

With motor
FK 202-4/27

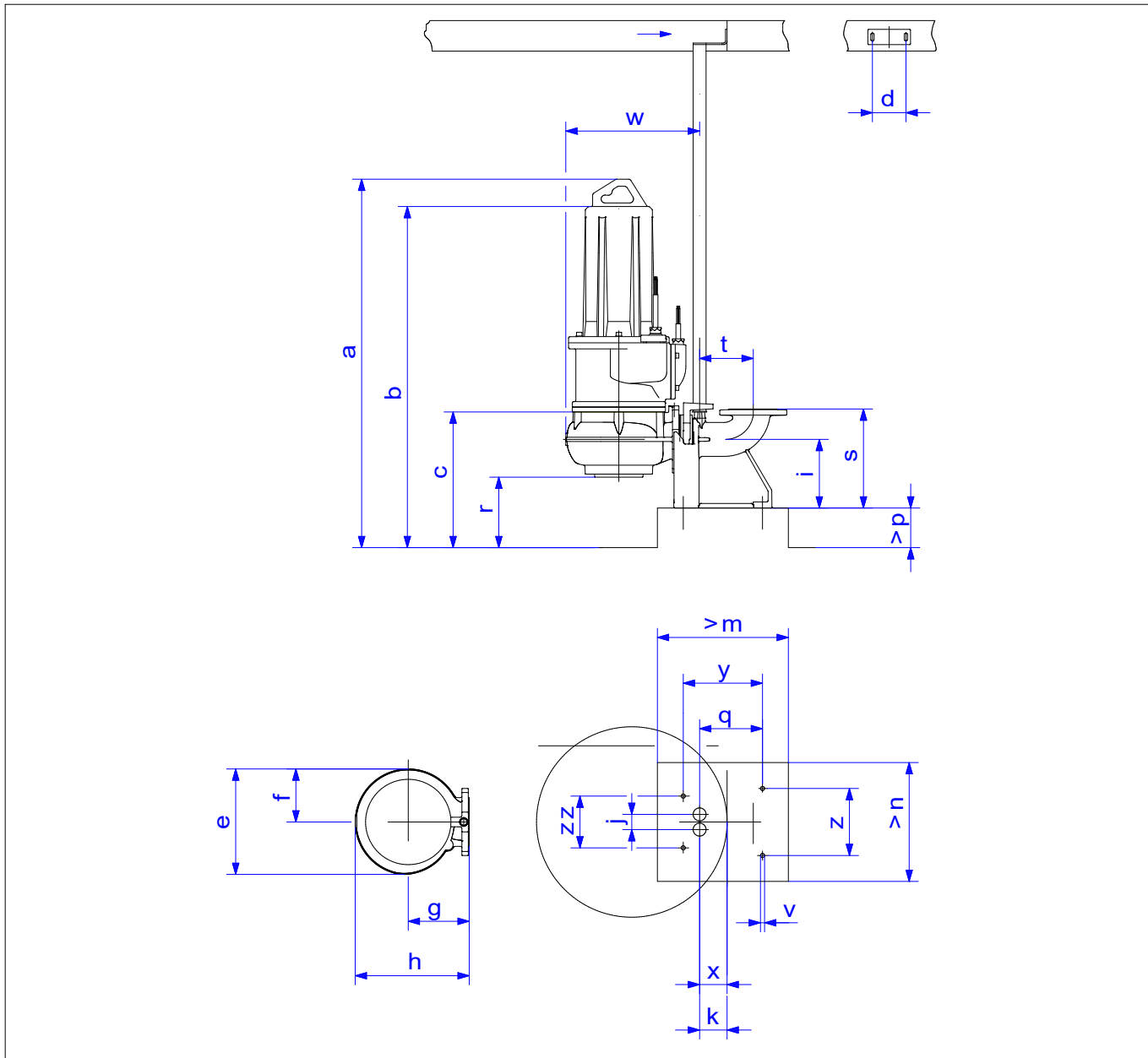
Project ID Untitled project 2025-03-05 10:17:21.271

Project name

Installation location

Customer pos. No.

Date 2025-03-05



Dimensions

Name	Value	Name	Value
a	1,286 mm	k	98 mm
b = min. water level	415 mm	m	530 mm
c	415 mm	n	490 mm
d	110 mm	p	100 mm
e	444 mm	q	206 mm
f	256 mm	r	178 mm
g	255 mm	s	325 mm
h	457 mm	t	176 mm
i	225 mm	v	13.5 mm
j	50 mm	w	522 mm

Connections

Suction port	DN150 PN10
Discharge port	DN100 PN10
Suspension device	DN100S/2RK