

**Customer**

## Technical data

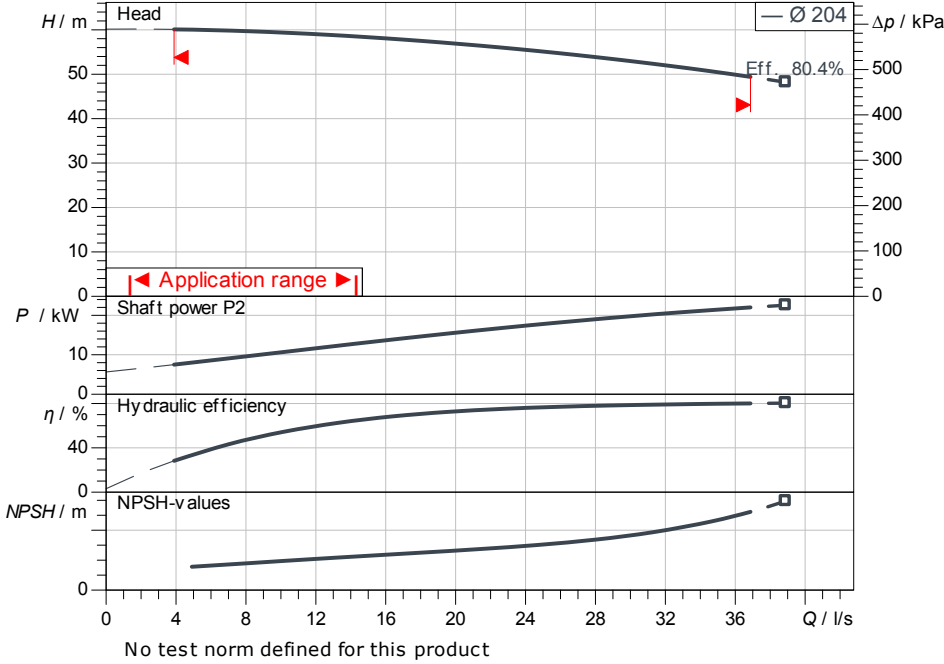
### Glanded monobloc pump Atmos BST 65/200-22/2-V2

Project ID: Untitled project 2025-03-01 17:12:44.130

Project name  
Installation location  
Customer pos. No.

Date: 2025-03-01

#### Duty chart



#### Requested data

Flow  
Head  
Media: Water 100 %  
Fluid temperature: 20.00 °C  
Density: 998.30 kg/m<sup>3</sup>  
Kin. viscosity: 1.00 mm<sup>2</sup>/s

#### Hydraulic data (Duty point)

Flow  
Head  
Shaft power P2  
Hydraulic efficiency  
NPSH  
Impeller size: 204

#### Product data

Glanded monobloc pump  
Atmos BST 65/200-22/2-V2  
Max. operating pressure: 1,000 kPa  
Fluid temperature: -20 °C ... +120 °C  
Max. ambient temperature: 50 °C  
Minimum efficiency index (MEI): ≥ 0.4

#### Motordata per Motor/Pump

Motor efficiency level: IE3  
Mains connection: 3~ 400 V / 50 Hz  
Permitted voltage tolerance: +6 %  
Max. speed: 2,900 1/min  
Rated power P2: 22.00 kW  
Rated current: 38.50 A  
Power factor: 0.89  
Efficiency: 50% / 75% / 100% // %  
Degree of protection: IP55  
Insulation class: F  
Motor protection

#### Fitting dimensions

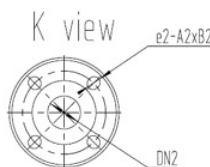
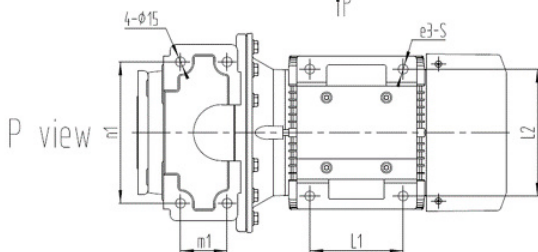
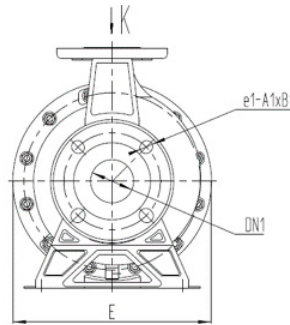
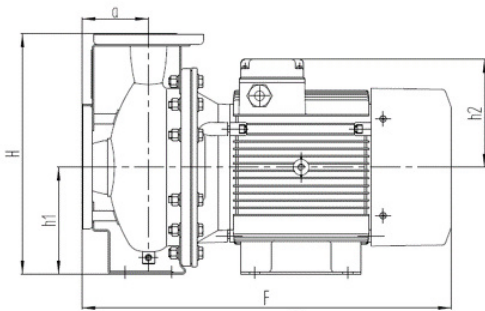
Pipe connection on the suction side: DN 80, PN 16  
Pipe connection (pressure side): DN 65, PN 16  
Port to Port

#### Materials

Pump housing: 1.4301  
Impeller: 1.4301  
Shaft: 1.4301  
Shaft seal: B3Q1EF

#### Information for order placements

Weight approx.  
Item number: 9187088



#### Dimensions

mm

A	100	dL	18	H	405	M1	95
A1	18	DN1	DN 80, P	H1	180	n1	250
A2	18	DN2	DN 65, P	H2	270	Ø k	160
B1	20	E	356	L1	241	Ø d	118
B2	20	F	776	L2	279	Ø D	200



Contact  
E-mail  
Phone

Customer

Contact  
E-mail  
Phone

# Hydraulic data

Glanded monobloc pump  
Atmos BST 65/200-22/2-V2

Project ID: Untitled project 2025-03-01 17:12:44.130

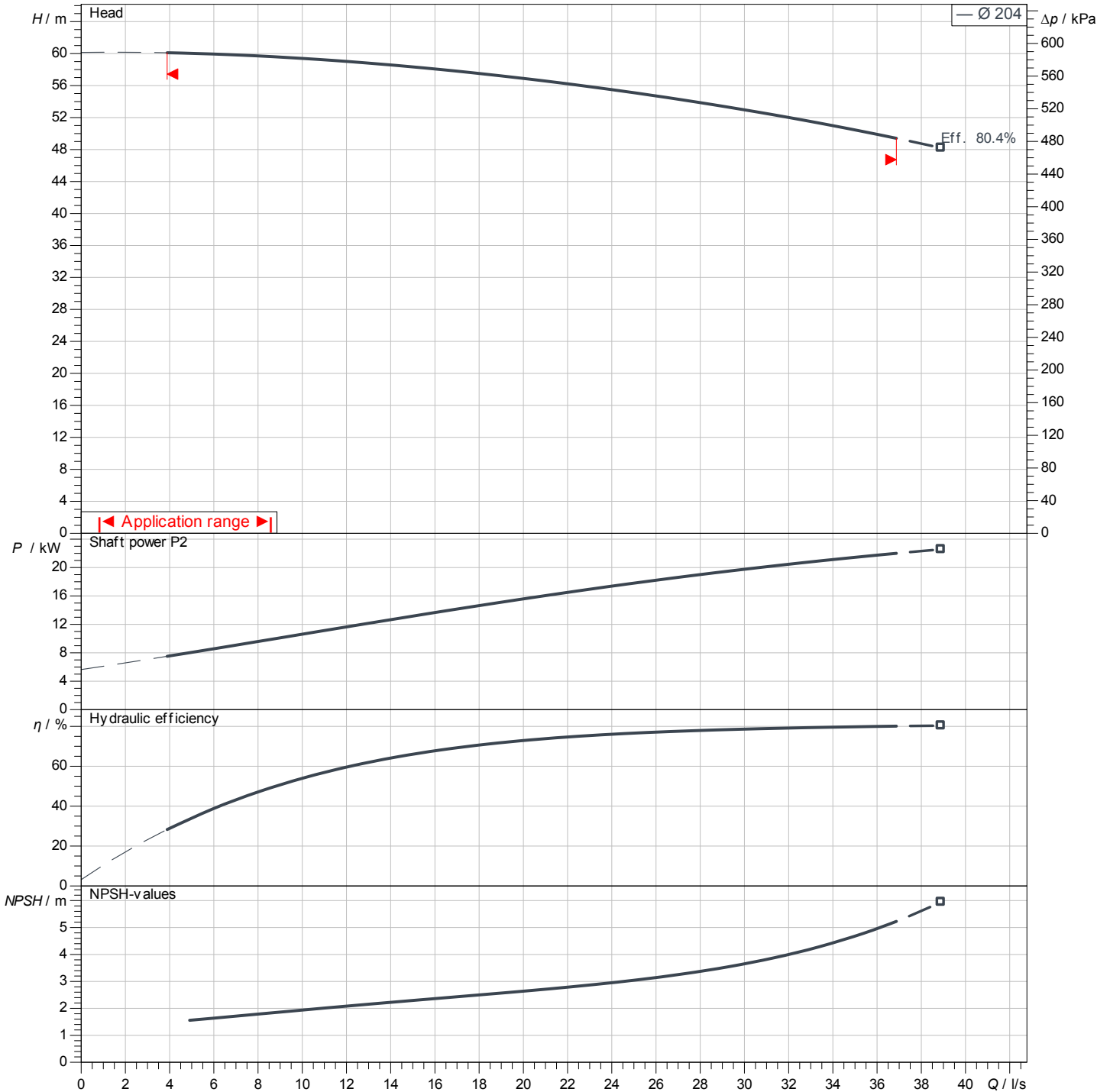
Project name  
Installation location  
Customer pos. No.

Date: 2025-03-01

## Operating data

Rotational speed <b>2957 1/min</b>	Frequency <b>50 Hz</b>	Duty point <b>Q =</b>	<b>H =</b>	Suction port <b>DN 80</b>	Discharge port <b>DN 65</b>
---------------------------------------	---------------------------	--------------------------	------------	------------------------------	--------------------------------

Power data referred to: Water; 20°C; 998.3kg/m³; 1.005mm²/s ±10 % tolerance with linear U/f frequency control



No test norm defined for this product

Contact  
E-mail  
Phone

**Customer**

Contact  
E-mail  
Phone

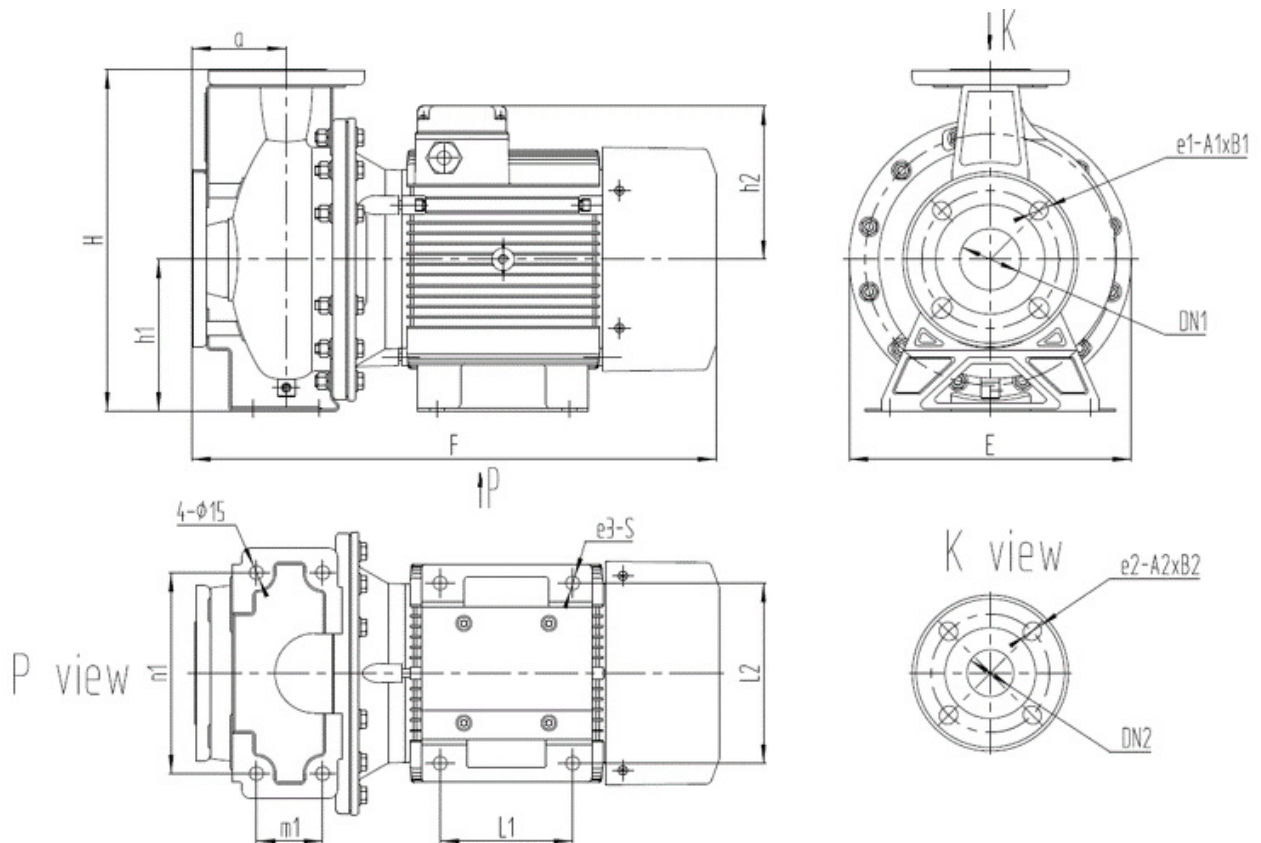
## Dimensions

Glanded monobloc pump  
Atmos BST 65/200-22/2-V2

Project ID                      Untitled project 2025-03-01 17:12:44.130

Project name  
Installation location  
Customer pos. No.

Date                      2025-03-01



**Standard**

Suction side                      DN 80, PN 16  
Discharge side                    DN 65, PN 16

**Dimensions**                    mm

Name	Value	Name	Value	Name	Value	Name	Value
A	100	DN2	DN 65, PN 16	L2	279		
A1	18	E	356	M1	95		
A2	18	F	776	n1	250		
B1	20	H	405	Ø k	160		
B2	20	H1	180	Ø d	118		
dL	18	H2	270	Ø D	200		
DN1	DN 80, PN 16	L1	241				