

Customer

Technical data

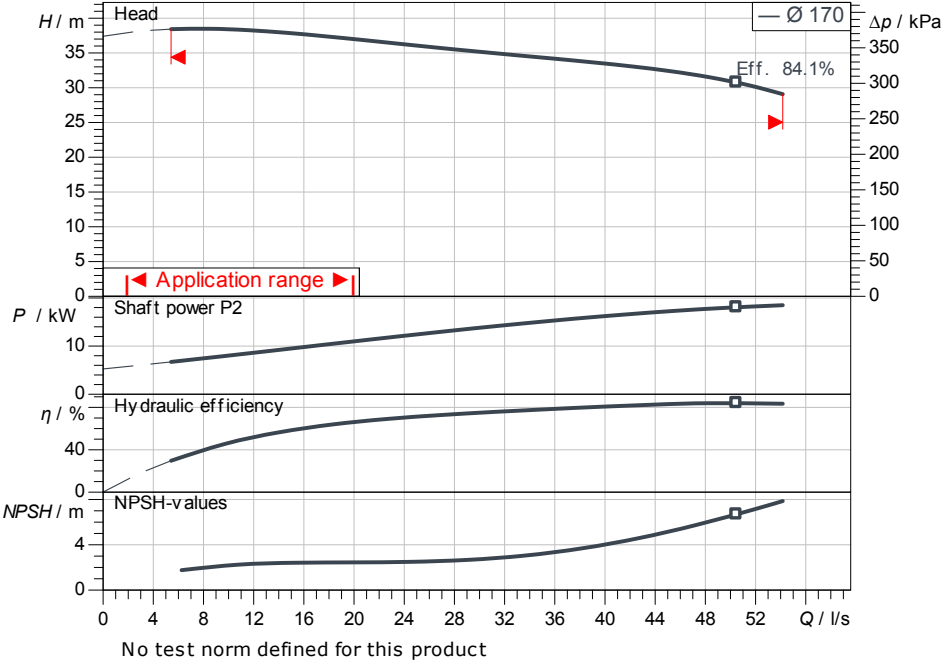
Glanded monobloc pump Atmos BST 80/160-18.5/2-V2

Project ID Untitled project 2025-03-01 17:12:44.130

Project name
Installation location
Customer pos. No.

Date 2025-03-01

Duty chart



Requested data

Flow	
Head	
Media	Water 100 %
Fluid temperature	20.00 °C
Density	998.30 kg/m ³
Kin. viscosity	1.00 mm ² /s

Hydraulic data (Duty point)

Flow	
Head	
Shaft power P2	
Hydraulic efficiency	
NPSH	
Impeller size	170

Product data

Glanded monobloc pump	
Atmos BST 80/160-18.5/2-V2	
Max. operating pressure	1,000 kPa
Fluid temperature	-20 °C ... +120 °C
Max. ambient temperature	50 °C
Minimum efficiency index (MEI)	≥ 0.4

Motordata per Motor/Pump

Motor efficiency level	IE3
Mains connection	3~ 400 V / 50 Hz
Permitted voltage tolerance	+6 %
Max. speed	2,900 1/min
Rated power P2	18.50 kW
Rated current	32.50 A
Power factor	0.89
Efficiency	50% / 75% / 100%
Degree of protection	IP55
Insulation class	F
Motor protection	

Fitting dimensions

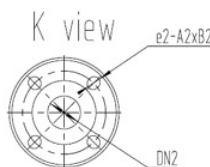
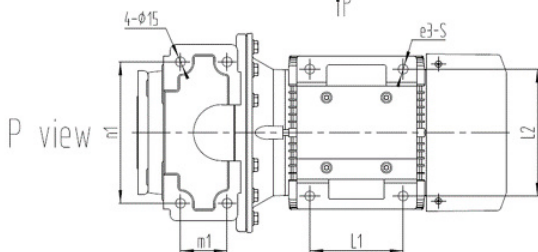
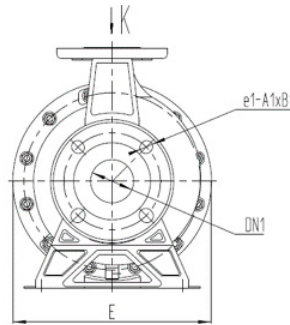
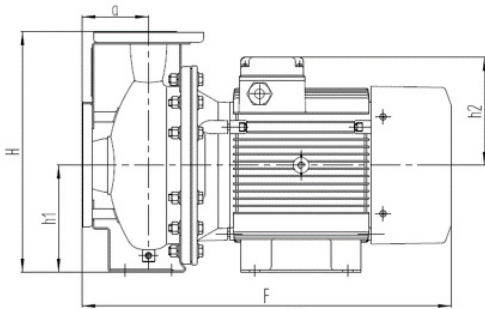
Pipe connection on the suction side	DN 100, PN 16
Pipe connection (pressure side)	DN 80, PN 16
Port to Port	

Materials

Pump housing	1.4301
Impeller	1.4301
Shaft	1.4301
Shaft seal	B3Q1EF

Information for order placements

Weight approx.	
Item number	9187092



Dimensions

mm

A	125	dL	18	H	405	n1	250
A1	18	DN1	DN 100,	H1	180	Ø k	180
A2	18	DN2	DN 80, P	H2	255	Ø d	156
B1	20	E	354	L2	254	Ø D	220
B2	20	F	769	M1	95		



Contact
E-mail
Phone

Customer

Contact
E-mail
Phone

Hydraulic data

Glanded monobloc pump
Atmos BST 80/160-18.5/2-V2

Project ID: Untitled project 2025-03-01 17:12:44.130

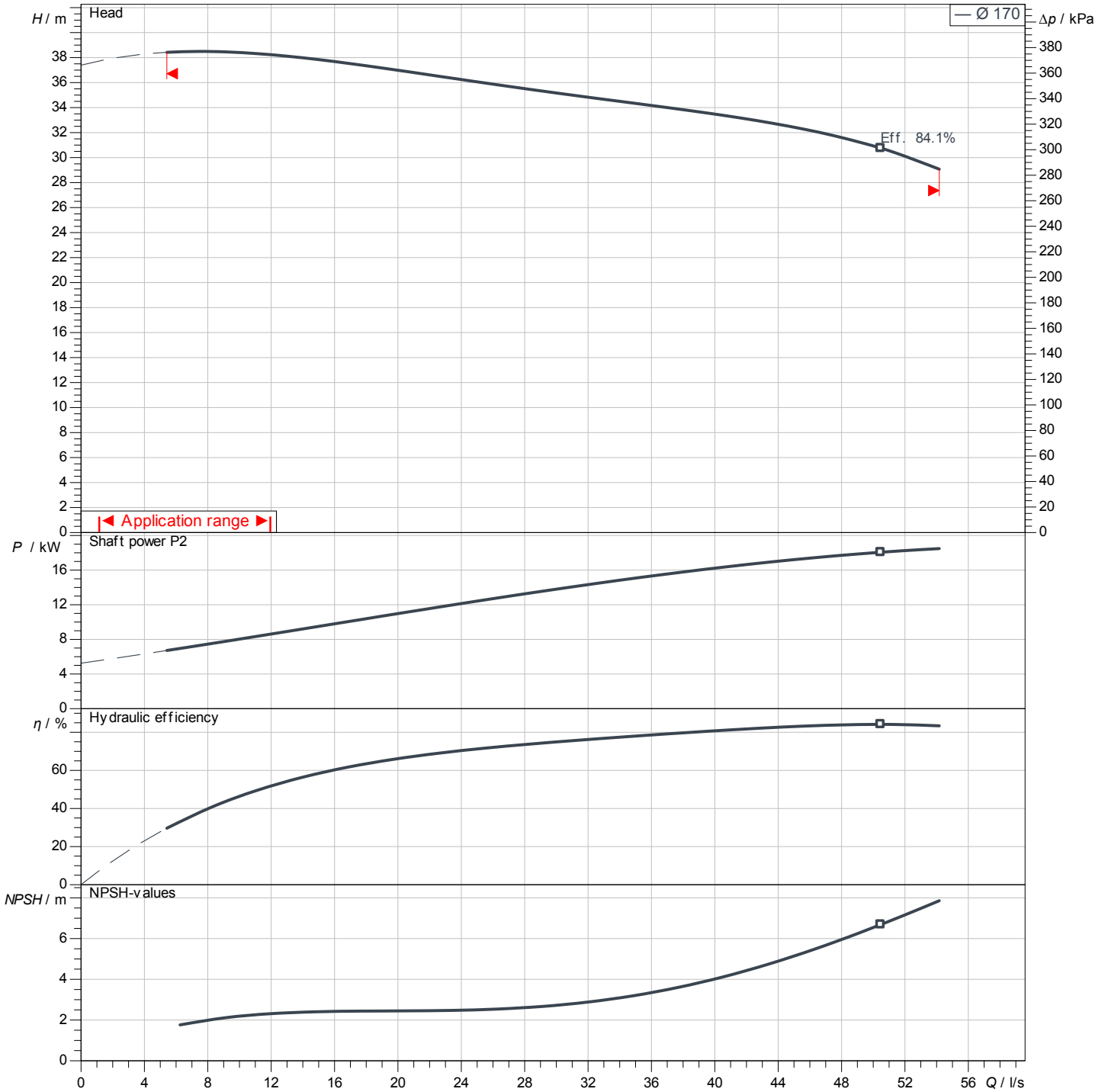
Project name
Installation location
Customer pos. No.

Date: 2025-03-01

Operating data

Rotational speed 2955 1/min	Frequency 50 Hz	Duty point Q =	H =	Suction port DN 100	Discharge port DN 80
---------------------------------------	---------------------------	--------------------------	------------	-------------------------------	--------------------------------

Power data referred to: Water; 20°C; 998.3kg/m³; 1.005mm²/s ±10 % tolerance with linear U/f frequency control



No test norm defined for this product

Contact
E-mail
Phone

Customer

Contact
E-mail
Phone

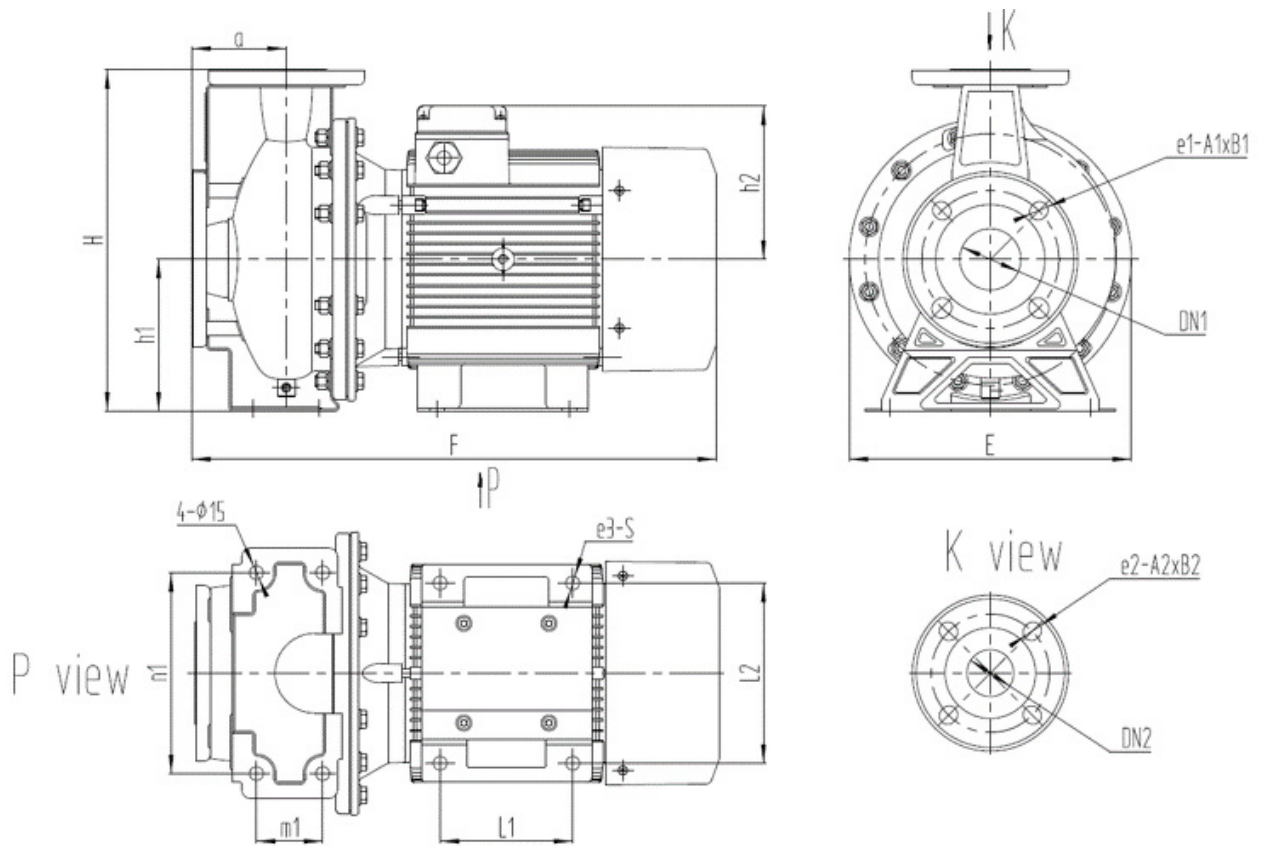
Dimensions

Glanded monobloc pump
Atmos BST 80/160-18.5/2-V2

Project ID Untitled project 2025-03-01 17:12:44.130

Project name
Installation location
Customer pos. No.

Date 2025-03-01



Standard

Suction side DN 100, PN 16
Discharge side DN 80, PN 16

Dimensions mm

Name	Value	Name	Value	Name	Value	Name	Value
A	125	DN2	DN 80, PN 16	M1	95		
A1	18	E	354	n1	250		
A2	18	F	769	Ø k	180		
B1	20	H	405	Ø d	156		
B2	20	H1	180	Ø D	220		
dL	18	H2	255				
DN1	DN 100, PN 16	L2	254				