

Customer

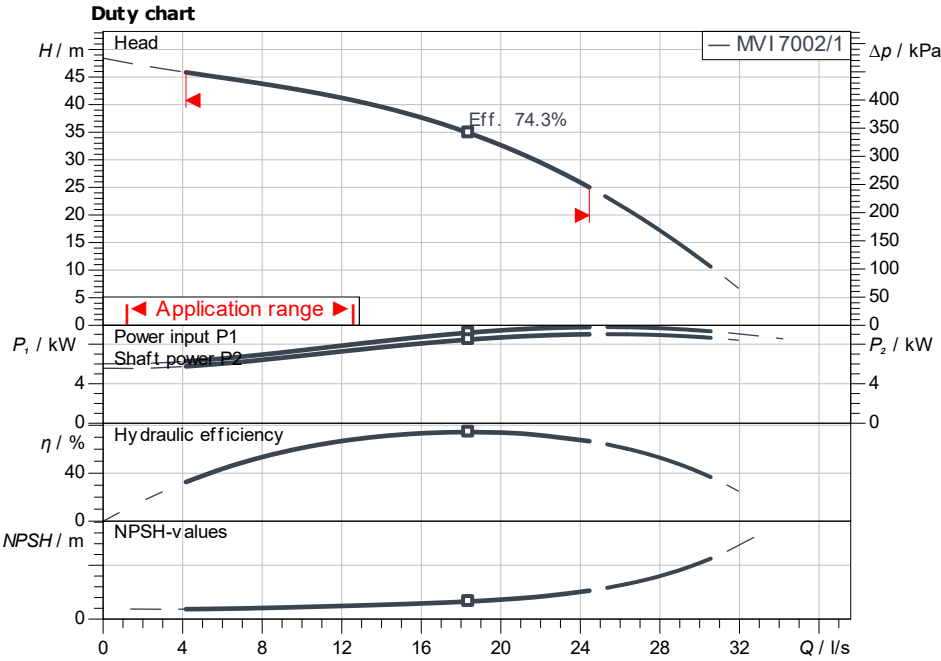
Technical data

Fire-extinguishing system FLA-1 MVI 7002/1 PN10

Project ID Untitled project 2025-03-03 14:15:38.327

Project name
Installation location
Customer pos. No.

Date 2025-03-03



Requested data

Flow
Head
Media Water 100 %
Fluid temperature 20.00 °C
Density 998.30 kg/m³
Kin. viscosity 1.00 mm²/s

Hydraulic data (Duty point)

Flow
Head
Shaft power P_2

Product data

Fire-extinguishing system
FLA-1 MVI 7002/1 PN10

No. of pumps 1
Max. operating pressure 1,000 kPa
Inlet pressure max. 1,000
Fluid temperature 3 °C ... +50 °C
Max. ambient temperature 40 °C
Protection class system IP55
Protection class of switchgear IP54
Diaphragm pressure vessel Yes
Low-water cut-out switchgear No

Motordata per Motor/Pump

Motor efficiency level IE3
Mains connection 3~ 400 V / 50 Hz
Permitted voltage tolerance +-10 %
Rated speed 2,926 1/min
Rated power P_2 9.00 kW
Rated current 16.70 A
Power factor 0.87
Efficiency 50% / 75% / 100%
Degree of protection IP55
Insulation class F
Motor protection Yes

Fitting dimensions

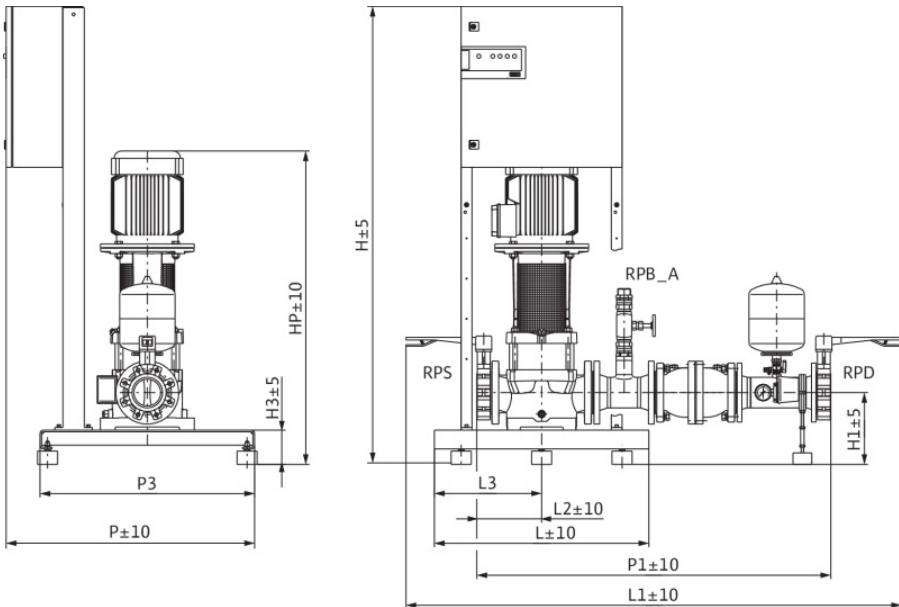
Pipe connection on the suction side DN 100, PN 10
Pipe connection (pressure side) DN 100, PN 16

Materials

Pump housing 5.1301/EN-GJL-250
Impeller 1.4301
Shaft 1.4057
Shaft seal U3BE3GG
Gasket material EPDM
Pipework material 1.4307

Information for order placements

Weight approx. 281 kg
Item number 2536577



Dimensions

mm

H	1,705	L	800	P1	1,324	RPS	DN 100,
H1	270	L1	1,852	P3	800		
H3	130	L2	244	P4	0		
HP	1,169	L3	400	RPB_A	R 1½		
HS	600	P	925	RPD	DN 100,		

Contact
E-mail
Phone

Customer

Contact
E-mail
Phone

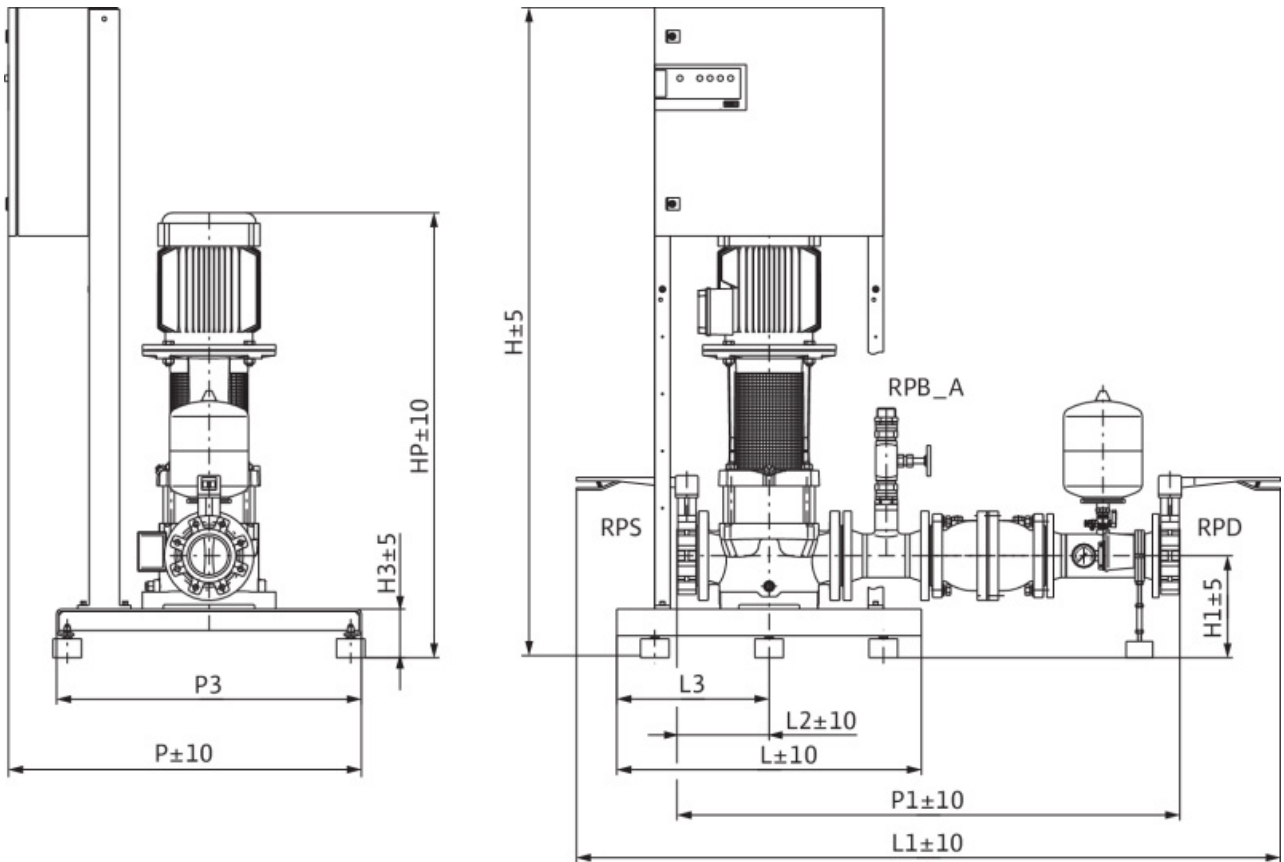
Dimensions

Fire-extinguishing system
FLA-1 MVI 7002/1 PN10

Project ID Untitled project 2025-03-03 14:15:38.327

Project name
Installation location
Customer pos. No.

Date 2025-03-03



Standard

Suction side DN 100, PN 10/PN 16
Discharge side DN 100, PN 10/PN 16

Dimensions mm

Name	Value	Name	Value	Name	Value	Name	Value
H	1,705	L2	244	RPD	DN 100, PN 16		
H1	270	L3	400	RPS	DN 100, PN 10		
H3	130	P	925				
HP	1,169	P1	1,324				
HS	600	P3	800				
L	800	P4	0				
L1	1,852	RPB_A	R 1 ½				



Contact
E-mail
Phone

Customer

Contact
E-mail
Phone

Wiring diagram

Fire-extinguishing system FLA-1 MVI 7002/1 PN10

Project ID Untitled project 2025-03-03 14:15:38.327

Project name
Installation location
Customer pos. No.

Date 2025-03-03

Wiring diagram

1-phase / 3-phase **3~**

