

Contact  
E-mail  
Phone

**Customer**

Contact  
E-mail  
Phone

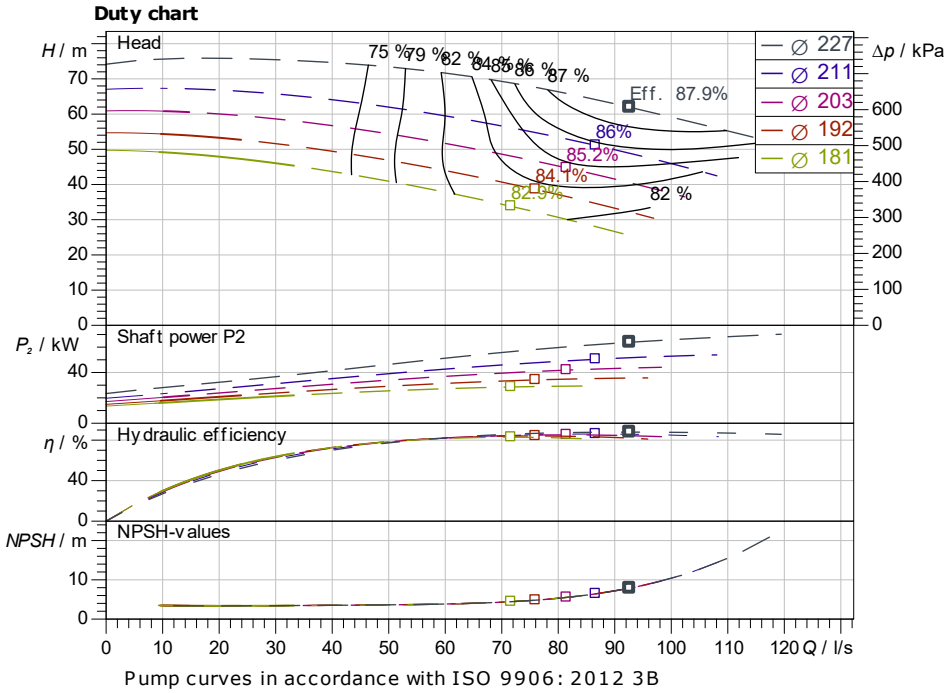
## Technical data

Glanded standard pump  
Atmos GIGA-NHT 100/200-22/2-S2

Project ID                      Untitled project 2025-03-01 20:45:47.557

Project name  
Installation location  
Customer pos. No.

Date                      2025-03-01



**Requested data**

Flow  
Head  
Media                      Water 100 %  
Fluid temperature                      20.00 °C  
Density                      998.30 kg/m<sup>3</sup>  
Kin. viscosity                      1.00 mm<sup>2</sup>/s

**Hydraulic data (Duty point)**

Flow  
Head  
Shaft power P2  
Hydraulic efficiency  
NPSH  
Impeller size                      227

**Product data**

Glanded standard pump  
Atmos GIGA-NHT 100/200-22/2-S2  
Max. operating pressure                      2,500 kPa  
Fluid temperature                      -20 °C ... +350 °C  
Max. ambient temperature                      50 °C  
Minimum efficiency index (MEI)

**Motordata per Motor/Pump**

Motor efficiency level                      IE3  
Mains connection                      3~ 400 V / 50 Hz  
Permitted voltage tolerance                      + -10 %  
Max. speed                      2,950 1/min  
Rated power P2                      22.00 kW  
Rated current                      39.70 A  
Power factor                      0.8  
Efficiency                      50% / 75% / 100%                      92.3/93/92.9%  
Degree of protection                      IP55  
Insulation class                      F  
Motor protection                      PTC integrated

**Fitting dimensions**

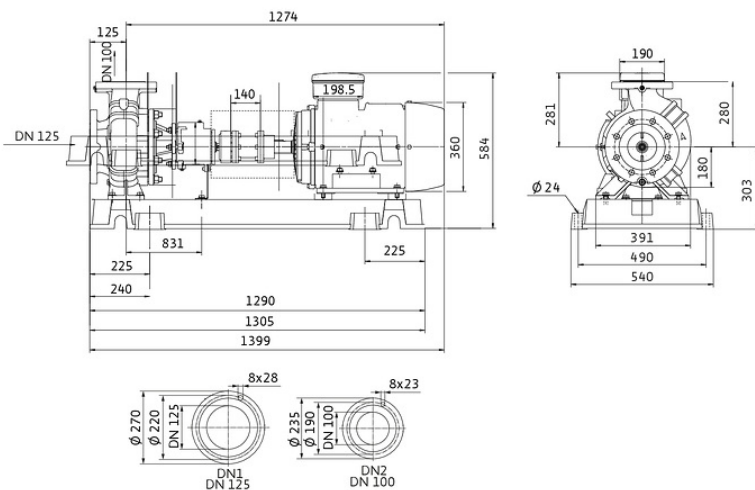
Pipe connection on the suction side                      DN 125, PN 25  
Pipe connection (pressure side)                      DN 100, PN 25  
Port to Port

**Materials**

Pump housing                      EN-GJS-400-15  
  
Impeller                      EN-GJL-200  
Shaft                      1.4028  
Shaft seal                      AQ1VGG

**Information for order placements**

Weight approx.  
Item number                      6098365



**Dimensions**                      mm



Contact  
E-mail  
Phone

Customer

Contact  
E-mail  
Phone

# Hydraulic data

Glanded standard pump

Atmos GIGA-NHT 100/200-22/2-S2

Project ID

Untitled project 2025-03-01 20:45:47.557

Project name

Installation location

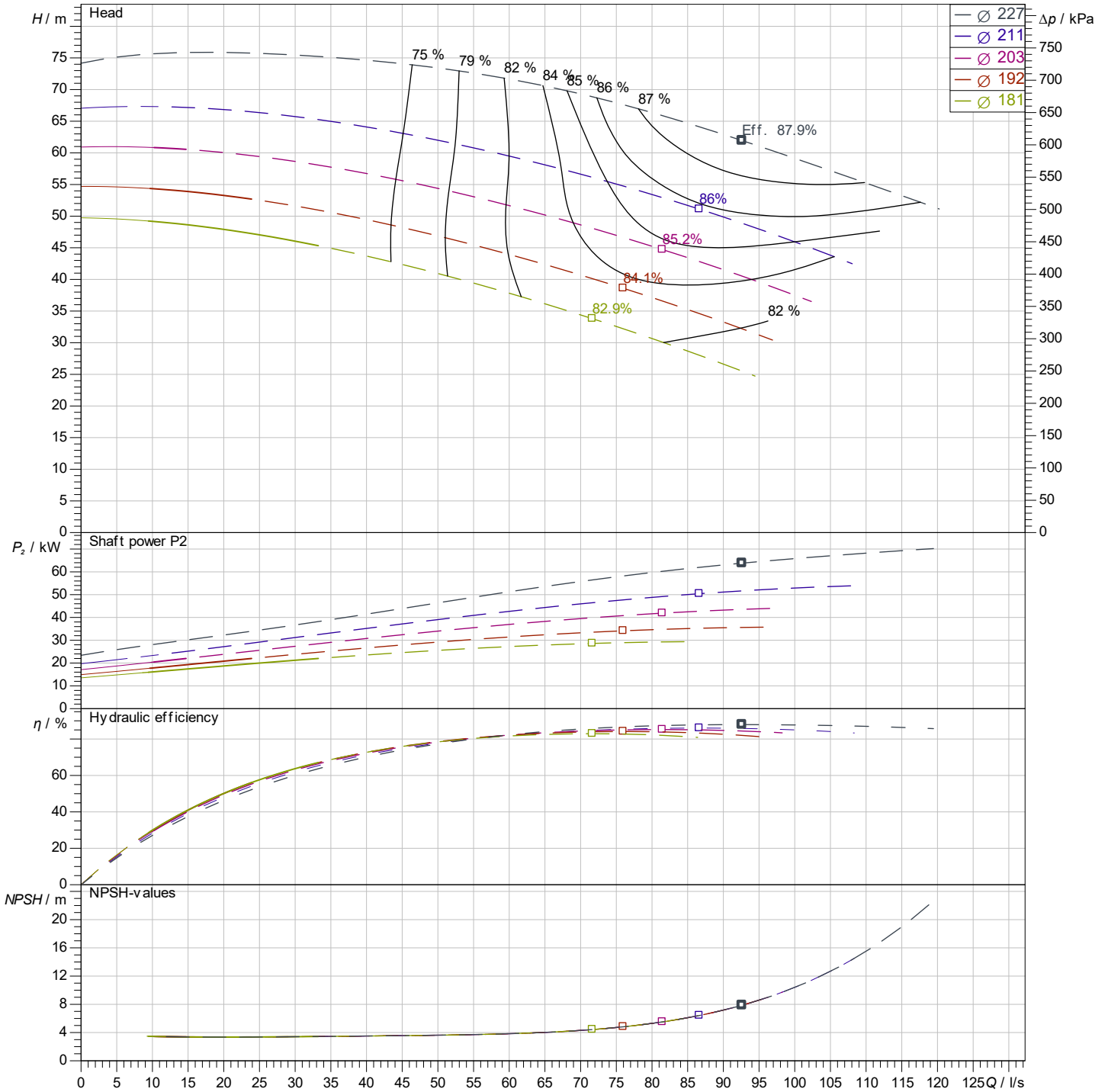
Customer pos. No.

Date 2025-03-01

## Operating data

Rotational speed <b>2975 1/min</b>	Frequency <b>50 Hz</b>	Duty point <b>Q =</b>	<b>H =</b>	Suction port <b>DN 125</b>	Discharge port <b>DN 100</b>
---------------------------------------	---------------------------	--------------------------	------------	-------------------------------	---------------------------------

Power data referred to: Water; 20°C; 998.3kg/m³; 1.005mm²/s ±10 % tolerance with linear U/f frequency control



Pump curves in accordance with ISO 9906: 2012 3B

Contact  
E-mail  
Phone

**Customer**

Contact  
E-mail  
Phone

## Dimensions

### Glanded standard pump

Atmos GIGA-NHT 100/200-22/2-S2

Project ID

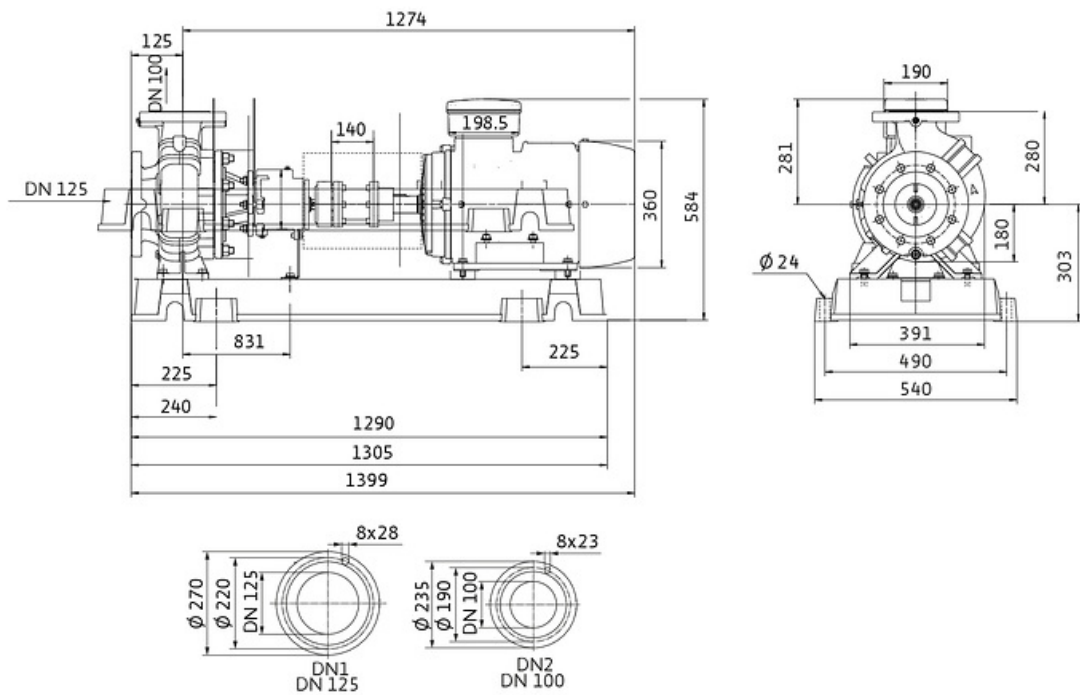
Untitled project 2025-03-01 20:45:47.557

Project name

Installation location

Customer pos. No.

Date 2025-03-01



**Standard**

Suction side DN 125, PN 25

Discharge side DN 100, PN 25

**Dimensions** mm

Name	Value	Name	Value	Name	Value	Name	Value
------	-------	------	-------	------	-------	------	-------