

Customer

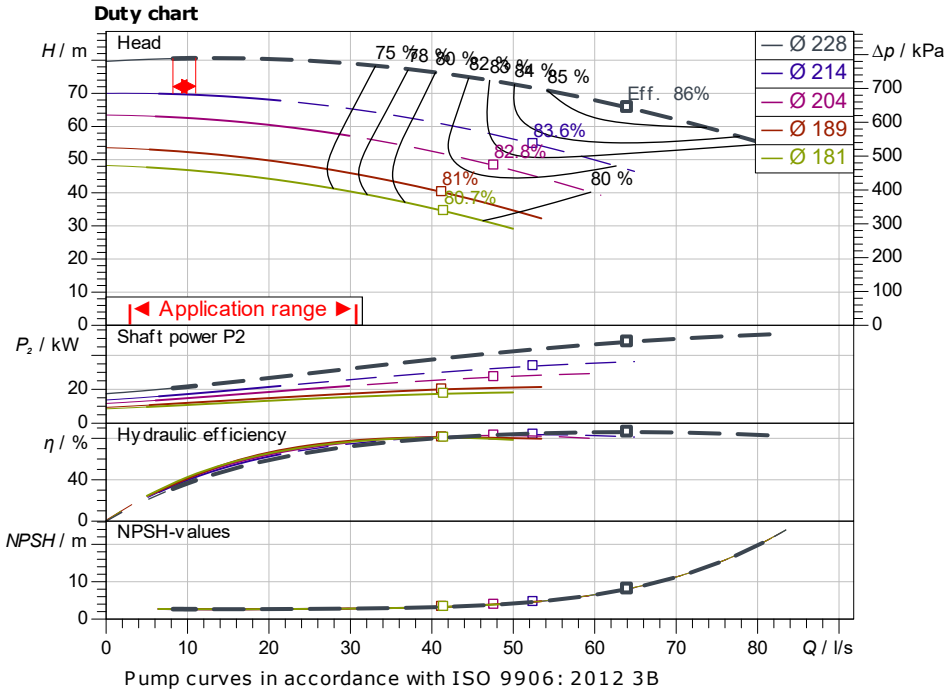
Technical data

Glanded standard pump Atmos GIGA-NHT 80/200-22/2-S2

Project ID Untitled project 2025-03-01 20:45:47.557

Project name
Installation location
Customer pos. No.

Date 2025-03-01



Requested data

Flow	
Head	
Media	Water 100 %
Fluid temperature	20.00 °C
Density	998.30 kg/m ³
Kin. viscosity	1.00 mm ² /s

Hydraulic data (Duty point)

Flow	
Head	
Shaft power P_2	
Hydraulic efficiency	
NPSH	
Impeller size	228

Product data

Glanded standard pump	
Atmos GIGA-NHT 80/200-22/2-S2	
Max. operating pressure	2,500 kPa
Fluid temperature	-20 °C ... +350 °C
Max. ambient temperature	50 °C
Minimum efficiency index (MEI)	

Motordata per Motor/Pump

Motor efficiency level	IE3
Mains connection	3~ 400 V / 50 Hz
Permitted voltage tolerance	+ -10 %
Max. speed	2,950 1/min
Rated power P_2	22.00 kW
Rated current	39.70 A
Power factor	0.8
Efficiency	
50% / 75% / 100%	92.3/93/92.9%
Degree of protection	IP55
Insulation class	F
Motor protection	PTC integrated

Fitting dimensions

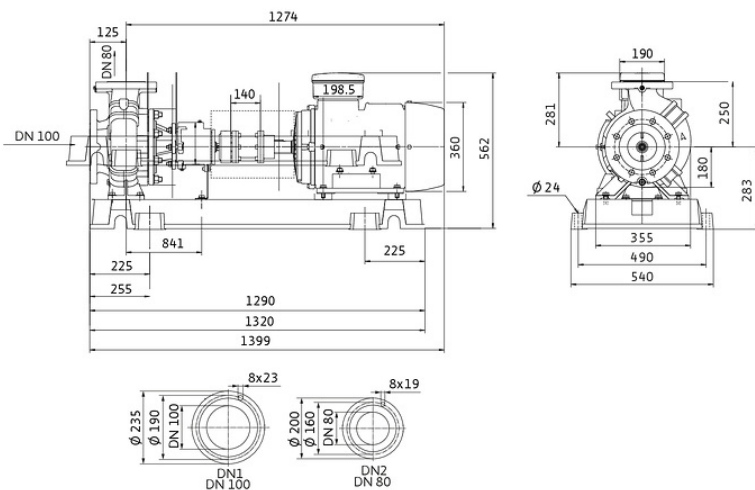
Pipe connection on the suction side	DN 100, PN 25
Pipe connection (pressure side)	DN 80, PN 25
Port to Port	

Materials

Pump housing	EN-GJS-400-15
Impeller	EN-GJL-200
Shaft	1.4028
Shaft seal	AQ1VGG

Information for order placements

Weight approx.	
Item number	6095334



Dimensions mm



Contact
E-mail
Phone

Customer

Contact
E-mail
Phone

Hydraulic data

Glanded standard pump
Atmos GIGA-NHT 80/200-22/2-S2

Project ID: Untitled project 2025-03-01 20:45:47.557

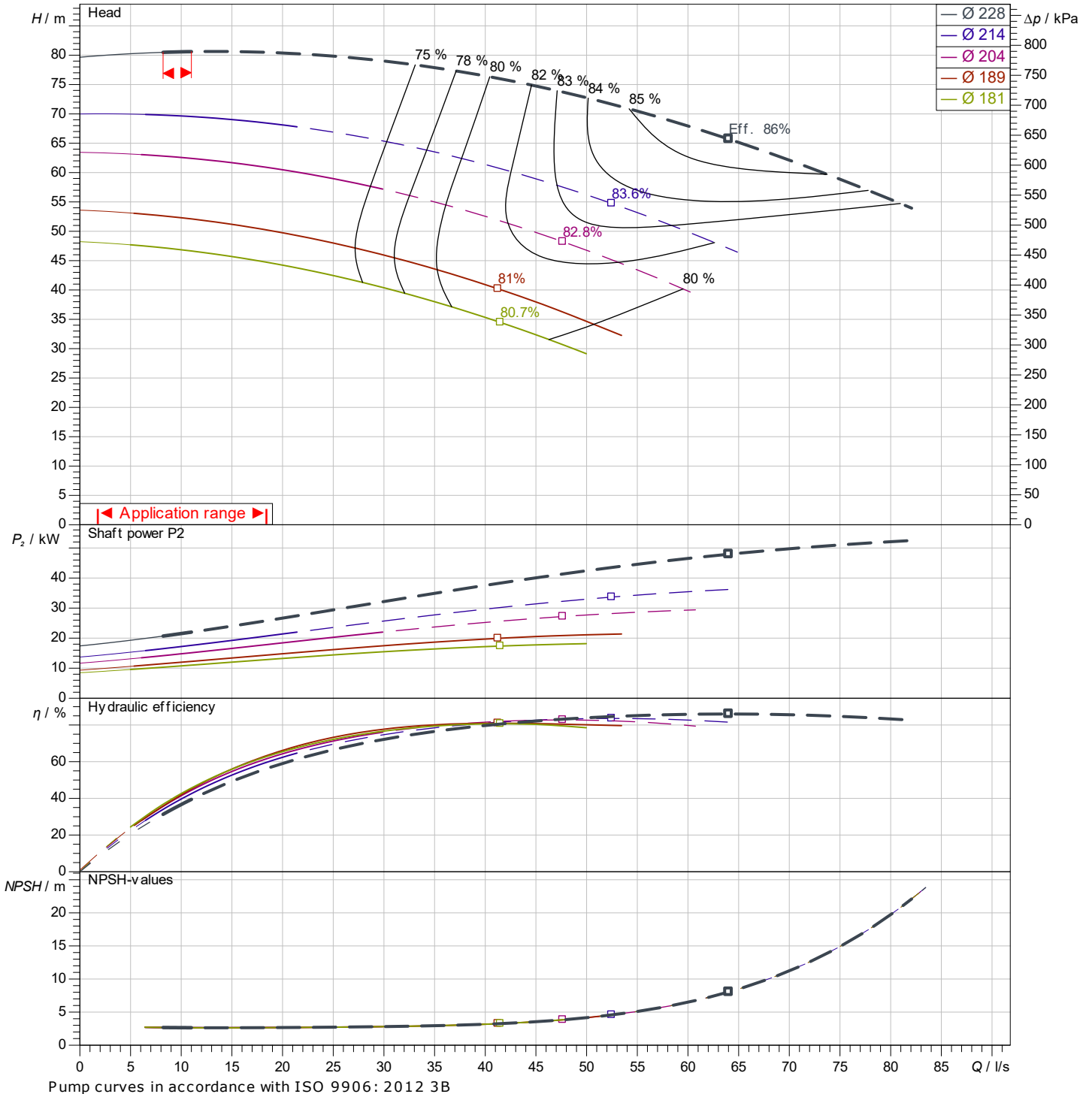
Project name
Installation location
Customer pos. No.

Date: 2025-03-01

Operating data

Rotational speed 2955 1/min	Frequency 50 Hz	Duty point Q =	H =	Suction port DN 100	Discharge port DN 80
---------------------------------------	---------------------------	--------------------------	------------	-------------------------------	--------------------------------

Power data referred to: Water; 20°C; 998.3kg/m³; 1.005mm²/s ±10 % tolerance with linear U/f frequency control



Contact
E-mail
Phone

Customer

Contact
E-mail
Phone

Dimensions

Glanded standard pump

Atmos GIGA-NHT 80/200-22/2-S2

Project ID

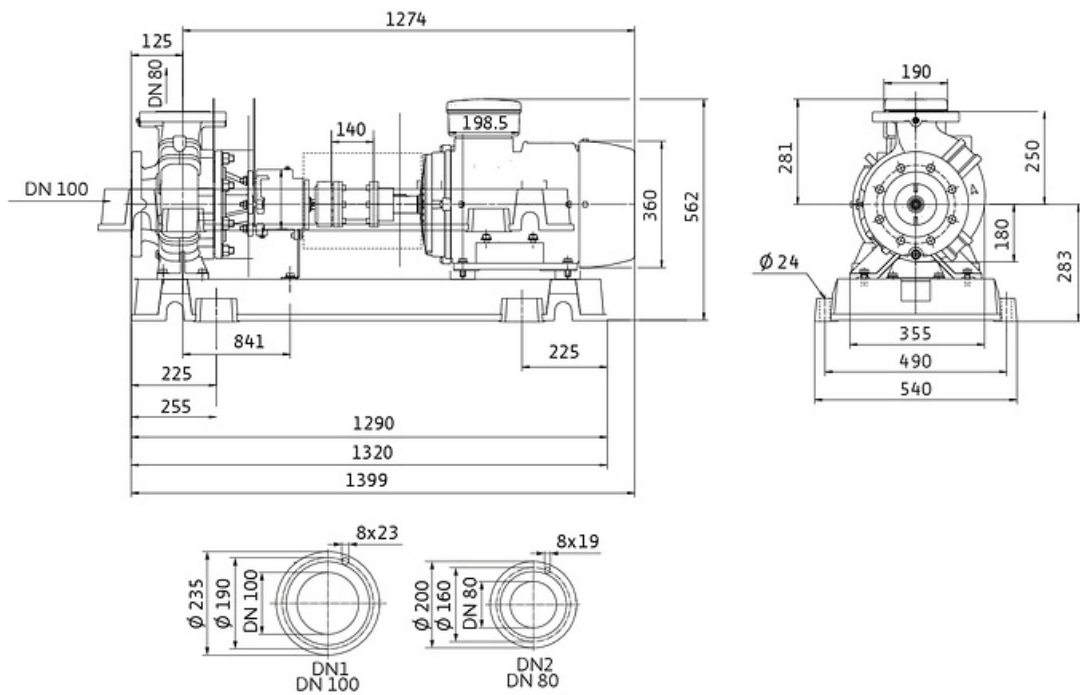
Untitled project 2025-03-01 20:45:47.557

Project name

Installation location

Customer pos. No.

Date 2025-03-01



Standard

Suction side DN 100, PN 25

Discharge side DN 80, PN 25

Dimensions mm

Name	Value	Name	Value	Name	Value	Name	Value
------	-------	------	-------	------	-------	------	-------