

Customer

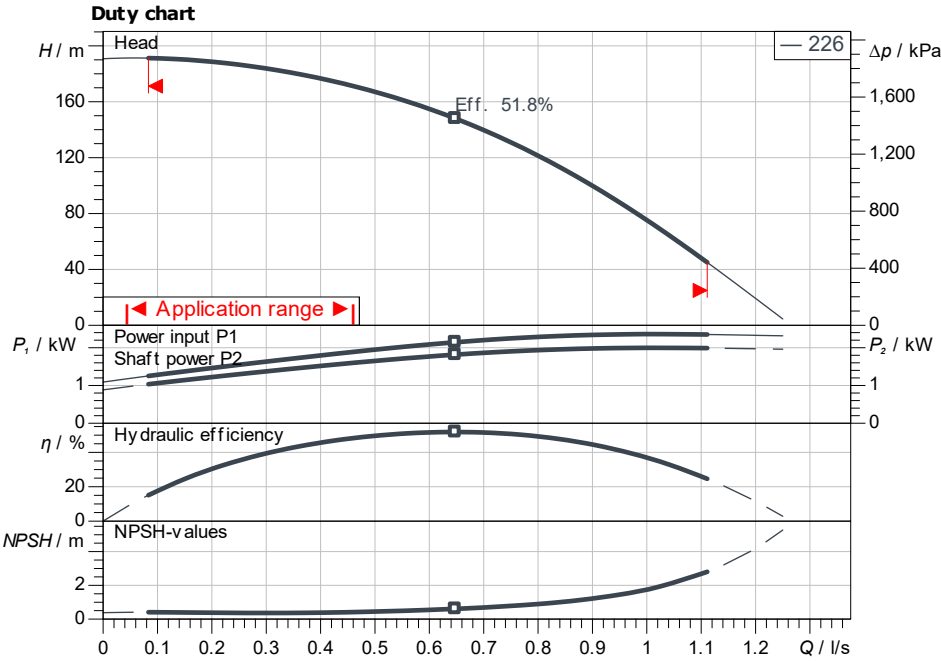
Technical data

High-pressure multistage centrifugal pump Helix V 226-2/25/V/KS/400-50

Project ID: Untitled project 2025-03-03 20:19:56.538

Project name
Installation location
Customer pos. No.

Date: 2025-03-03



Requested data

Flow
Head
Media: Water 100 %
Fluid temperature: 20.00 °C
Density: 998.30 kg/m³
Kin. viscosity: 1.00 mm²/s

Hydraulic data (Duty point)

Flow
Head
Shaft power P2
Hydraulic efficiency
NPSH

Product data

High-pressure multistage centrifugal pump
Helix V 226-2/25/V/KS/400-50
Max. operating pressure: 2,500 kPa
Inlet pressure max.: 10 bar
Fluid temperature: -15 °C ... +90 °C
Max. ambient temperature: 50 °C
Minimum efficiency index (MEI): ≥ 0.7

Motordata per Motor/Pump

Motor efficiency level: IE3
Mains connection: 3~ 400 V / 50 Hz
Permitted voltage tolerance: +10 %
Max. speed: 2,900 1/min
Rated power P2: 2.20 kW
Rated current: 4.30 A
Power factor: 0.87
Service factor: 1.15
Efficiency: 50% / 75% / 100% → 84.8/86.2/85.9%
Degree of protection: IP55
Insulation class: F
Motor protection: PTO

Fitting dimensions

Pipe connection on the suction side: DN 25, PN 25
Pipe connection (pressure side): DN 25, PN 25

Materials

Pump housing: 1.4404
Impeller: 1.4404
Shaft: 1.4404
Shaft seal: BQ7VGG
Gasket material: FKM

Information for order placements

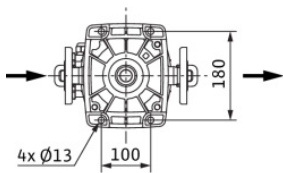
Weight approx.: 51 kg
Item number: 4161753

ISO 9906: 2012 3B

Dimensions

mm

H	1,32
H2	1,03
ØM	172
X	132
X	132



PN25

