

**Customer**

# Technical data

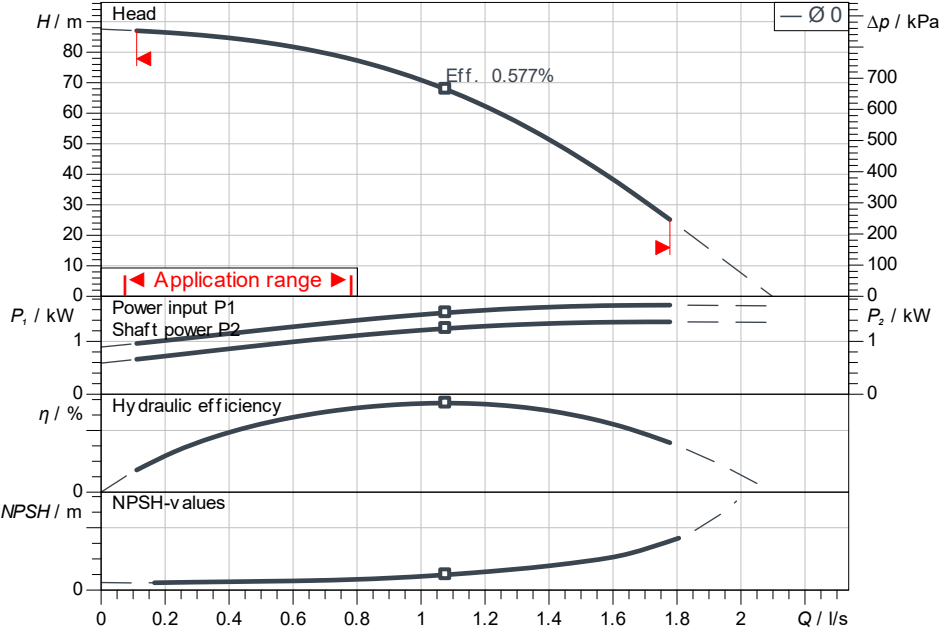
## High-pressure multistage centrifugal pump Helix V 411-1/25/E/S/1-230-50

Project ID: Untitled project 2025-03-03 20:19:56.538

Project name  
Installation location  
Customer pos. No.

Date: 2025-03-03

### Duty chart



### Requested data

Flow	
Head	
Media	Water 100 %
Fluid temperature	20.00 °C
Density	998.30 kg/m <sup>3</sup>
Kin. viscosity	1.00 mm <sup>2</sup> /s

### Hydraulic data (Duty point)

Flow	
Head	
Shaft power P2	
Hydraulic efficiency	
NPSH	

### Product data

High-pressure multistage centrifugal pump Helix V 411-1/25/E/S/1-230-50	
Max. operating pressure	2,500 kPa
Inlet pressure max.	10 bar
Fluid temperature	-30 °C ... +120 °C
Max. ambient temperature	40 °C
Minimum efficiency index (MEI)	≥ 0.7

### Motordata per Motor/Pump

Motor efficiency level	IE2
Mains connection	1~ 230 V / 50 Hz
Permitted voltage tolerance	+ -10 %
Max. speed	2,900 1/min
Rated power P2	1.50 kW
Rated current	8.21 A
Power factor	0.98
Service factor	1
Efficiency	
50% / 75% / 100%	//%
Degree of protection	IP55
Insulation class	F
Motor protection	PTO

### Fitting dimensions

Pipe connection on the suction side	DN 25, PN 25
Pipe connection (pressure side)	DN 25, PN 25

### Materials

Pump housing	1.4301
Impeller	1.4307
Shaft	1.4301
Shaft seal	BQ7EGG
Gasket material	EPDM

### Information for order placements

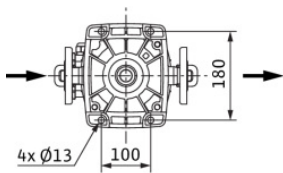
Weight approx.	35.4 kg
Item number	4234622

ISO 9906: 2012 3B

### Dimensions

mm

H	835
H2	556
ØM	172
X	137
X	149



PN25

