

Customer

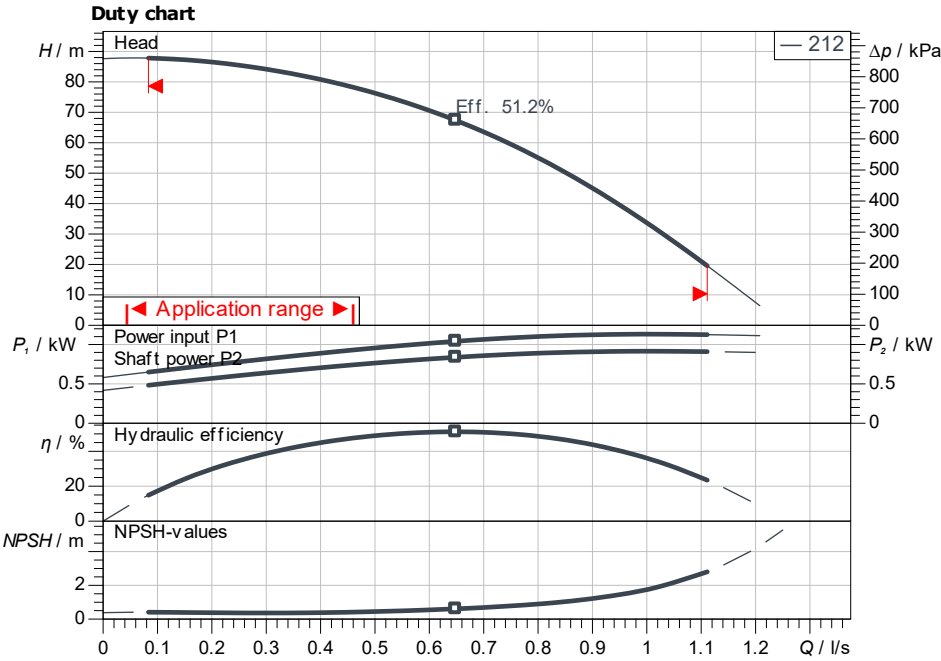
Technical data

High-pressure multistage centrifugal pump Helix V 212-2/25/V/KS/400-50

Project ID: Untitled project 2025-03-03 20:19:56.538

Project name
Installation location
Customer pos. No.

Date: 2025-03-03



Requested data

| | |
|-------------------|--------------------------|
| Flow | |
| Head | |
| Media | Water 100 % |
| Fluid temperature | 20.00 °C |
| Density | 998.30 kg/m ³ |
| Kin. viscosity | 1.00 mm ² /s |

Hydraulic data (Duty point)

| | |
|----------------------|--|
| Flow | |
| Head | |
| Shaft power P2 | |
| Hydraulic efficiency | |
| NPSH | |

Product data

| | |
|---|-------------------|
| High-pressure multistage centrifugal pump Helix V 212-2/25/V/KS/400-50 | |
| Max. operating pressure | 2,500 kPa |
| Inlet pressure max. | 10 bar |
| Fluid temperature | -15 °C ... +90 °C |
| Max. ambient temperature | 50 °C |
| Minimum efficiency index (MEI) | ≥ 0.7 |

Motordata per Motor/Pump

| | |
|-----------------------------|------------------|
| Motor efficiency level | IE3 |
| Mains connection | 3~ 400 V / 50 Hz |
| Permitted voltage tolerance | + -10 % |
| Max. speed | 2,900 1/min |
| Rated power P2 | 1.10 kW |
| Rated current | 2.50 A |
| Power factor | 0.8 |
| Service factor | 1.15 |
| Efficiency | 50% / 75% / 100% |
| Degree of protection | IP55 |
| Insulation class | F |
| Motor protection | No |

Fitting dimensions

| | |
|-------------------------------------|--------------|
| Pipe connection on the suction side | DN 25, PN 25 |
| Pipe connection (pressure side) | DN 25, PN 25 |

Materials

| | |
|-----------------|--------|
| Pump housing | 1.4404 |
| Impeller | 1.4404 |
| Shaft | 1.4404 |
| Shaft seal | BQ7VGG |
| Gasket material | FKM |

Information for order placements

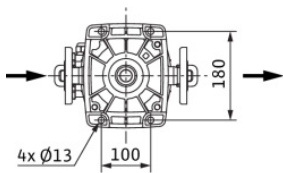
| | |
|----------------|---------|
| Weight approx. | 37 kg |
| Item number | 4161745 |

ISO 9906: 2012 3B

Dimensions

mm

| | |
|----|-----|
| H | 874 |
| H2 | 646 |
| ØM | 170 |
| X | 136 |
| X | 115 |



PN25

