

Customer

Technical data

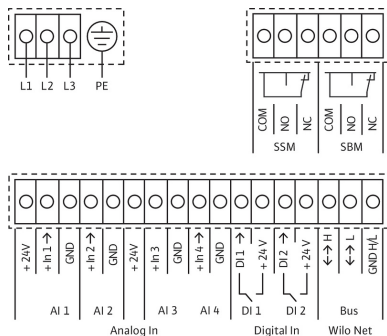
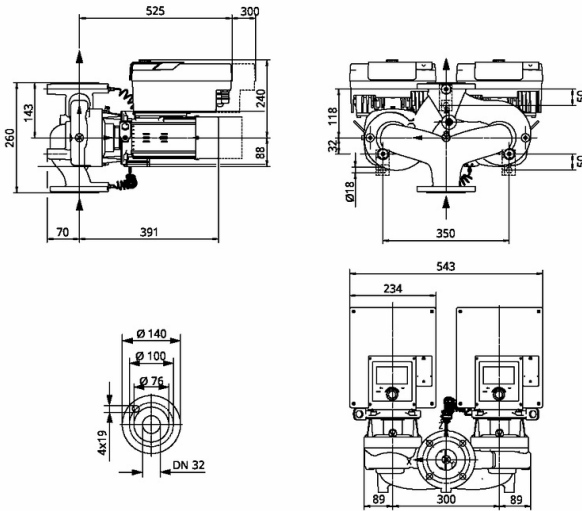
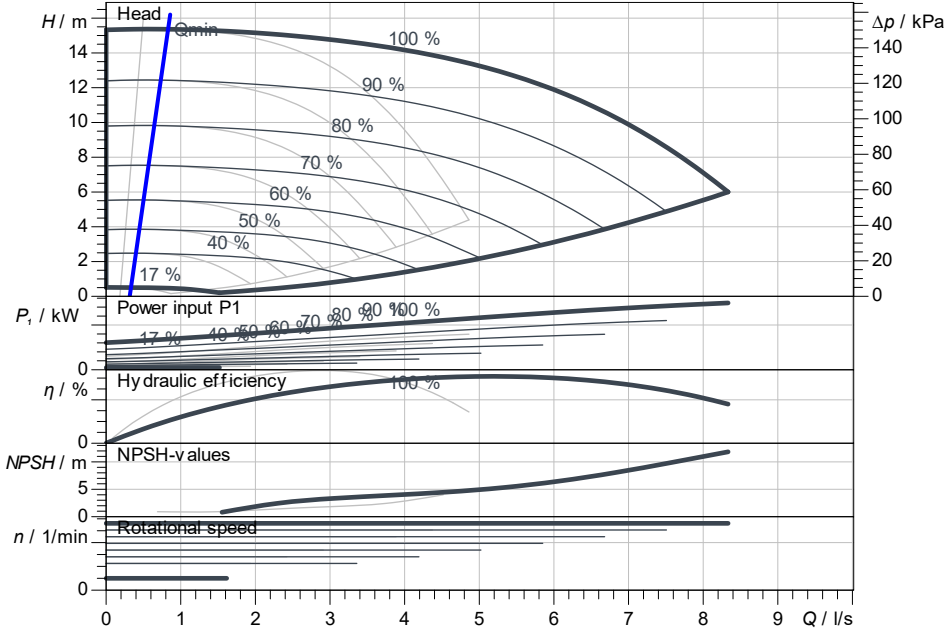
Glanded high-efficiency twin-head pump Stratos GIGA2.0-D 32/1-15/0,75

Project ID Untitled project 2025-03-04 05:18:48.548

Project name
Installation location
Customer pos. No.

Date 2025-03-04

Duty chart



Requested data

| | |
|-------------------|--------------------------|
| Flow | |
| Head | |
| Media | Water 100 % |
| Fluid temperature | 20.00 °C |
| Density | 998.30 kg/m ³ |
| Kin. viscosity | 1.00 mm ² /s |

Hydraulic data (Duty point)

| | |
|----------------|--|
| Flow | |
| Head | |
| Power input P1 | |
| NPSH | |

Product data

| | |
|--|--------------------|
| Glanded high-efficiency twin-head pump | |
| Stratos GIGA2.0-D 32/1-15/0,75 | |
| Kind of operation | n-const ADD |
| Max. operating pressure | 1,600 kPa |
| Fluid temperature | -20 °C ... +140 °C |
| Max. ambient temperature | 50 °C |
| Minimum efficiency index (MEI) | ≥ 0.7 |

Motordata per Motor/Pump

| | |
|-----------------------------|------------------|
| Motor design | EC motor |
| Efficiency class | IE5 |
| Mains connection | 3~ 400 V / 50 Hz |
| Permitted voltage tolerance | +/- 10 % |
| Max. speed | 2,100 1/min |
| Rated power P2 | 0.75 kW |
| Rated current | 1.30 A |
| Degree of protection | IP55 |
| Insulation class | F |
| Motor protection | PTC integrated |

Fitting dimensions

| | |
|-------------------------------------|--------------|
| Pipe connection on the suction side | DN 32, PN 16 |
| Pipe connection (pressure side) | DN 32, PN 16 |
| Port to Port | 260 mm |

Materials

| | |
|--------------|----------------------------------|
| Pump housing | 5.1301/EN-GJL-250 |
| Impeller | PPS-GF40 |
| Lantern | 5.1301, EN-GJL-250 cataphoretic- |
| Shaft | 1.4057 |
| Shaft seal | AQ1EGG |

Information for order placements

| | |
|----------------|---------|
| Weight approx. | 70 kg |
| Item number | 2205606 |