

**Customer**

## Technical data

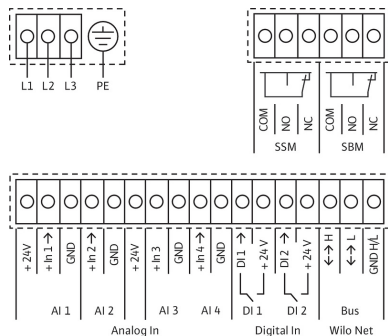
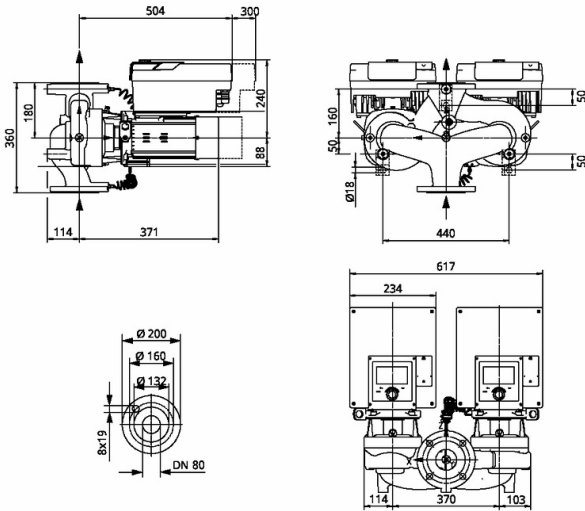
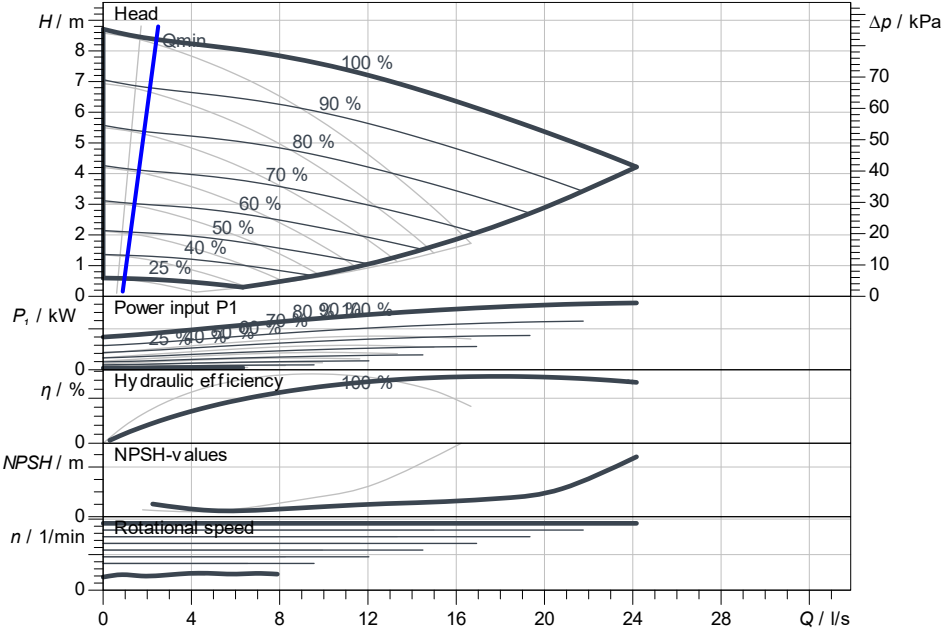
### Glanded high-efficiency twin-head pump Stratos GIGA2.0-D 80/1-8/0,75

Project ID                      Untitled project 2025-03-04 05:18:48.548

Project name  
Installation location  
Customer pos. No.

Date                      2025-03-04

**Duty chart**



**Requested data**

Flow	
Head	
Media	Water 100 %
Fluid temperature	20.00 °C
Density	998.30 kg/m <sup>3</sup>
Kin. viscosity	1.00 mm <sup>2</sup> /s

**Hydraulic data (Duty point)**

Flow	
Head	
Power input P1	
NPSH	

**Product data**

Glanded high-efficiency twin-head pump	
Stratos GIGA2.0-D 80/1-8/0,75	
Kind of operation	n-const ADD
Max. operating pressure	1,600 kPa
Fluid temperature	-20 °C ... +140 °C
Max. ambient temperature	50 °C
Minimum efficiency index (MEI)	≥ 0.7

**Motordata per Motor/Pump**

Motor design	EC motor
Efficiency class	IE5
Mains connection	3~ 400 V / 50 Hz
Permitted voltage tolerance	+/- 10 %
Max. speed	1,880 1/min
Rated power P2	0.75 kW
Rated current	1.40 A
Degree of protection	IP55
Insulation class	F
Motor protection	PTC integrated

**Fitting dimensions**

Pipe connection on the suction side	DN 80, PN 16
Pipe connection (pressure side)	DN 80, PN 16
Port to Port	360 mm

**Materials**

Pump housing	5.1301/EN-GJL-250
Impeller	PPS-GF40
Lantern	5.1301, EN-GJL-250 cataphoretic-
Shaft	1.4057
Shaft seal	AQ1EGG

**Information for order placements**

Weight approx.	85 kg
Item number	2205633