

Contact
E-mail
Phone

Customer

Contact
E-mail
Phone

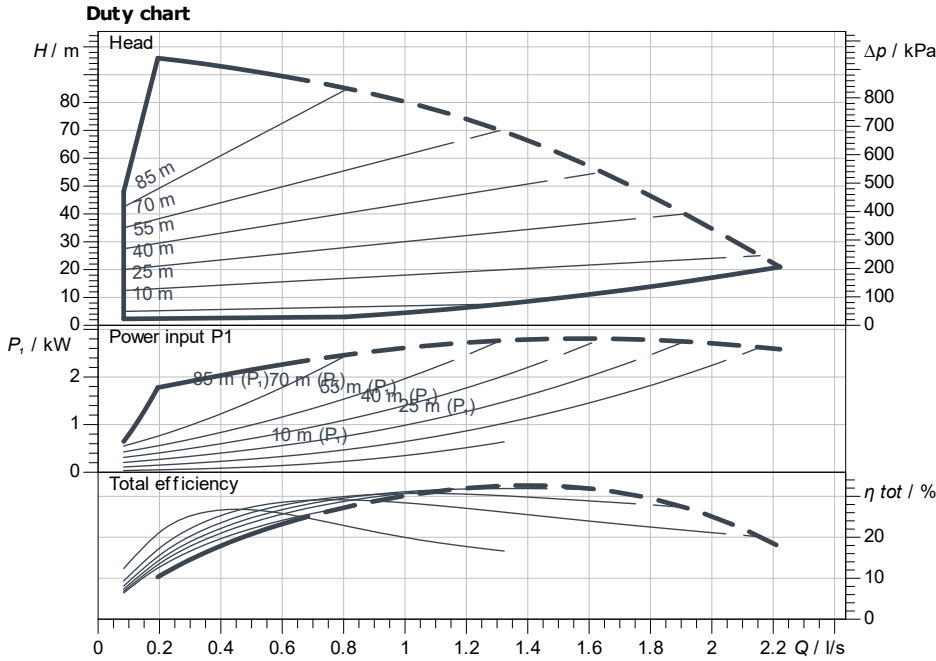
Technical data

High-pressure multistage centrifugal pump MWISE 410-1/16/E/3-2-3G

Project ID Untitled project 2025-03-03 23:00:00.495

Project name
Installation location
Customer pos. No.

Date 2025-03-04



Requested data

Flow
Head
Media Water 100 %
Fluid temperature 20.00 °C
Density 998.30 kg/m³
Kin. viscosity 1.00 mm²/s

Hydraulic data (Duty point)

Flow
Head
Shaft power P2
Hydraulic efficiency
NPSH

Product data

High-pressure multistage centrifugal pump
MWISE 410-1/16/E/3-2-3G
Max. operating pressure 1,600 kPa
Inlet pressure max. 10 bar
Fluid temperature -15 °C ... +50 °C
Max. ambient temperature 50 °C

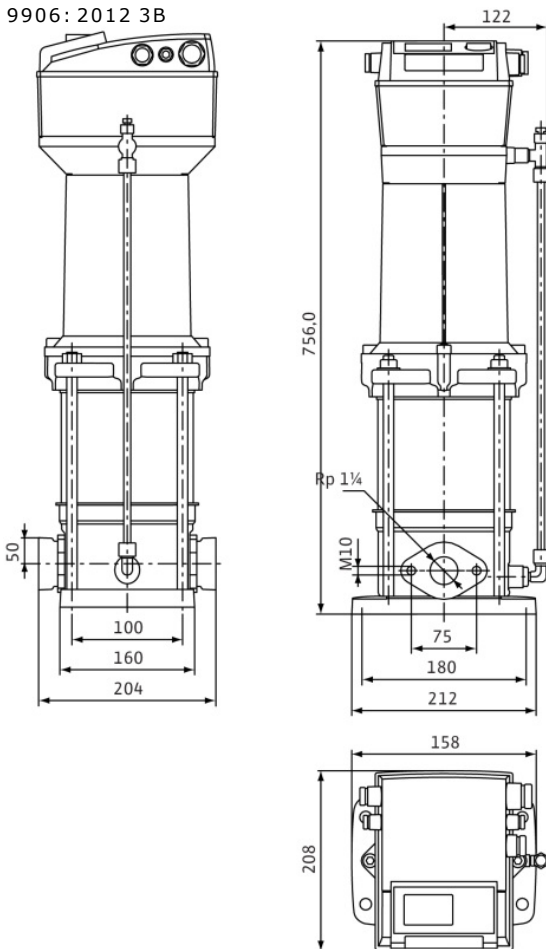
Motordata per Motor/Pump

Mains connection 3~ 400 V / 50 Hz
Permitted voltage tolerance +-10 %
Max. speed 2,900 1/min
Rated power P2 2.00 kW
Rated current 6.50 A
Degree of protection IP44
Insulation class F
Motor protection

ISO 9906: 2012 3B

Dimensions

mm



Fitting dimensions

Pipe connection on the suction side G 1 1/4, PN 16
Pipe connection (pressure side) G 1 1/4, PN 16

Materials

Pump housing 1.4301

Impeller 1.4301
Shaft 1.4122
Gasket material EPDM
Stage chamber material 1.4301

Information for order placements

Weight approx. 35 kg
Item number 4225626