

Customer

Technical data

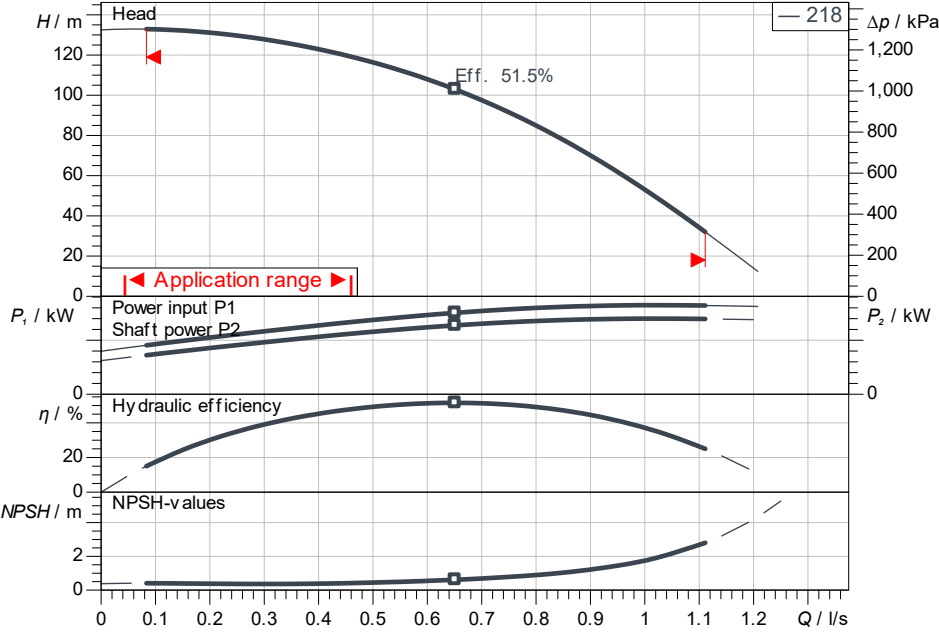
High-pressure multistage centrifugal pump Helix V 218-1/25/E/KS/400-50

Project ID: Untitled project 2025-03-03 20:19:56.538

Project name
Installation location
Customer pos. No.

Date: 2025-03-03

Duty chart



Requested data

Flow	
Head	
Media	Water 100 %
Fluid temperature	20.00 °C
Density	998.30 kg/m ³
Kin. viscosity	1.00 mm ² /s

Hydraulic data (Duty point)

Flow	
Head	
Shaft power P2	
Hydraulic efficiency	
NPSH	

Product data

High-pressure multistage centrifugal pump Helix V 218-1/25/E/KS/400-50	
Max. operating pressure	2,500 kPa
Inlet pressure max.	10 bar
Fluid temperature	-30 °C ... +120 °C
Max. ambient temperature	50 °C
Minimum efficiency index (MEI)	≥ 0.7

Motordata per Motor/Pump

Motor efficiency level	IE3
Mains connection	3~ 400 V / 50 Hz
Permitted voltage tolerance	+10 %
Max. speed	2,900 1/min
Rated power P2	1.50 kW
Rated current	3.00 A
Power factor	0.85
Service factor	1.15
Efficiency	50% / 75% / 100% → 80.9/83.8/84.2%
Degree of protection	IP55
Insulation class	F
Motor protection	No

Fitting dimensions

Pipe connection on the suction side	DN 25, PN 25
Pipe connection (pressure side)	DN 25, PN 25

Materials

Pump housing	1.4301
Impeller	1.4307
Shaft	1.4301
Shaft seal	BQ7EGG
Gasket material	EPDM

Information for order placements

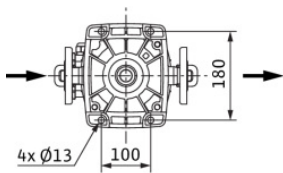
Weight approx.	45 kg
Item number	4161726

ISO 9906: 2012 3B

Dimensions

mm

H	1,10
H2	806
ØM	172
X	132
X	132



PN25

