



Contact  
E-mail  
Phone

Customer

Contact  
E-mail  
Phone

## Technical data

### Rexa PRO C08 DA-41

With motor

### P 13.1-16/EAD3X4-T

Project ID                      Untitled project 2025-03-05 10:17:21.271  
Project name  
Installation location  
Customer pos. No.

Date    2025-03-05

#### Pump

Pump type	Rexa PRO C08 DA-41
Installation type	Einhängevorrichtung DN80/2RK
Free passage	55 mm
Nominal speed	1740
Frequency	60 Hz
Impeller type	Single-channel
Impeller construction	Closed

#### Impeller Ø

designed	144 mm
standard	144 mm
Max.	144 mm
Min.	97 mm

#### Discharge port

Pressure rating	PN10
Rated diameter	DN80, Size 3, cutoff
Standard	WILO-D

#### Suction port

Pressure rating	PN10
Rated diameter	Size3.0
Standard	ANSI B16.1 CI

#### Weights

Weight	max.	19 kg
Weight of motor		41 kg
Weight of unit	max.	60 kg

#### Materials

Pump housing	EN-GJL-250
Stationary wear ring	1.4308
Impeller	EN-GJS-500-7

#### Motor

Motor name	P 13.1-16/EAD3X4-T
Number of poles	4
Rated power	1.5 kW
Rated speed	1743 1/min
Power input with rated power	1.8 kW
Rated voltage	208 ~3 V
Current input with rated power	7.4 A
Efficiency with rated power	81.2 %
cos phi with rated power	0.69
cos phi with starting	0
Rated frequency	60 Hz
Operation type wet	S1
Operation type dry	S2 30, S3 25%
Starting current, direct starting	58 A
Starting current, star-delta	19.3 A
Starting torque	37 Nm
Inertia moment	0.0041 kg m <sup>2</sup>
Degree of protection	IP 68
Sel. explosion protection	ATEX
Ex-designation	II 2G Ex db IIB T4/T3 Gb
Ex-number	BVS 11 ATEX E 119 X
Motor connection cable	7G1,5 H07RN-F
Max. fluid temperature	40 °C
Starts per hour max.	60

#### Duty point data

Volume flow	
Head	
Shaft power P2	
Hydr. efficiency η hyd.	
Power input P1	
Fluid	Water
Required pump NPSH	
Rotational speed	1,756 1/min
Max. flow	14.4 l/s
Head H(Q max)	7 m
Shut off head	10.5 m
Best efficiency point Q (BEP)	11.3 l/s
Best efficiency point H (BEP)	7.7 m

$$\text{Total efficiency} = \frac{P_2 * \text{Hydr. efficiency } \eta \text{ hyd.}}{P}$$

ArtNr



Contact  
E-mail  
Phone

Customer

Contact  
E-mail  
Phone

## Technical data

**Rexa PRO C08 DA-41**

With motor

**P 13.1-16/EAD3X4-T**

Project ID                      Untitled project 2025-03-05 10:17:21.271

Project name

Installation location

Date    2025-03-05

### **Tender text**

Submersible Sewage Pump as submersible, single-stage block unit in stationary, vertical installation to pump untreated sewage which doesn't attack the pump neither chemically nor mechanically. Pump with radially arranged discharge piece and axial pump intake. Service-friendly design by separated motor and pump casing. Pumping values to be guaranteed as per ISO 9906 Annex A

MT-071



Contact  
E-mail  
Phone

Customer

Contact  
E-mail  
Phone

## Performance curves

### Rexa PRO C08 DA-41

With motor

### P 13.1-16/EAD3X4-T

Project ID

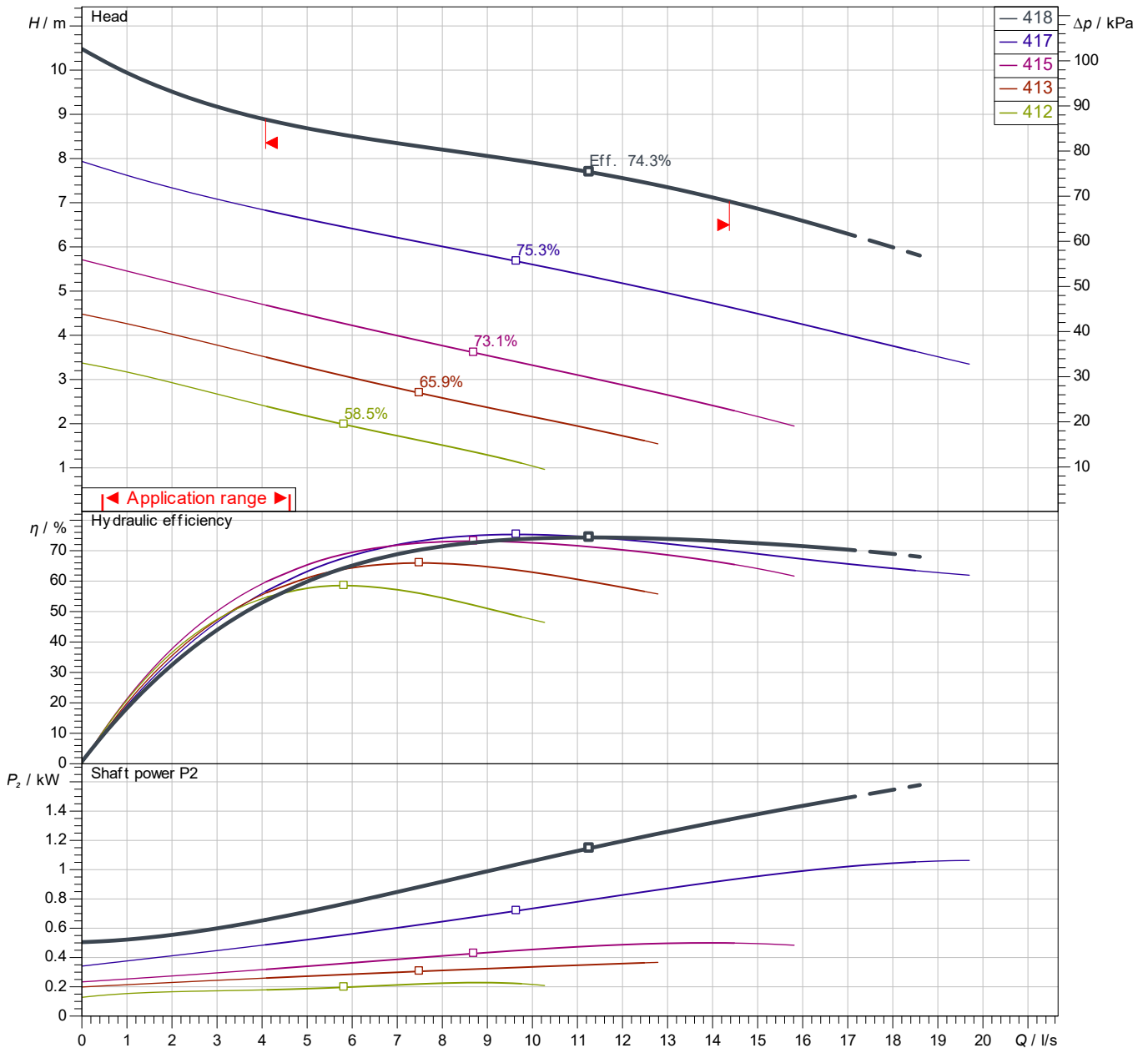
Untitled project 2025-03-05 10:17:21.271

Project name

Installation location

Customer pos. No.

Date 2025-03-05



Power data referred to: Water; 20°C; 998.3kg/m<sup>3</sup>; 1.005mm<sup>2</sup>/s  
Tolerance as per ISO 9906 / Annex A.2

#### Pump

Impeller Ø	designed	144 mm
Nominal speed		1,743 1/min
Frequency		60 Hz
Impeller type		Single-channel

#### Motor

Rated power	1.5 kW
Sel. explosion protection	ATEX

#### Duty point data

Volume flow	
Head	
Shaft power P2	
Hydr. efficiency $\eta$ hyd.	
Power input P1	
Required pump NPSH	
Rotational speed	1756 1/min

## Dimensions

### Rexa PRO C08 DA-41

With motor

### P 13.1-16/EAD3X4-T

Project ID

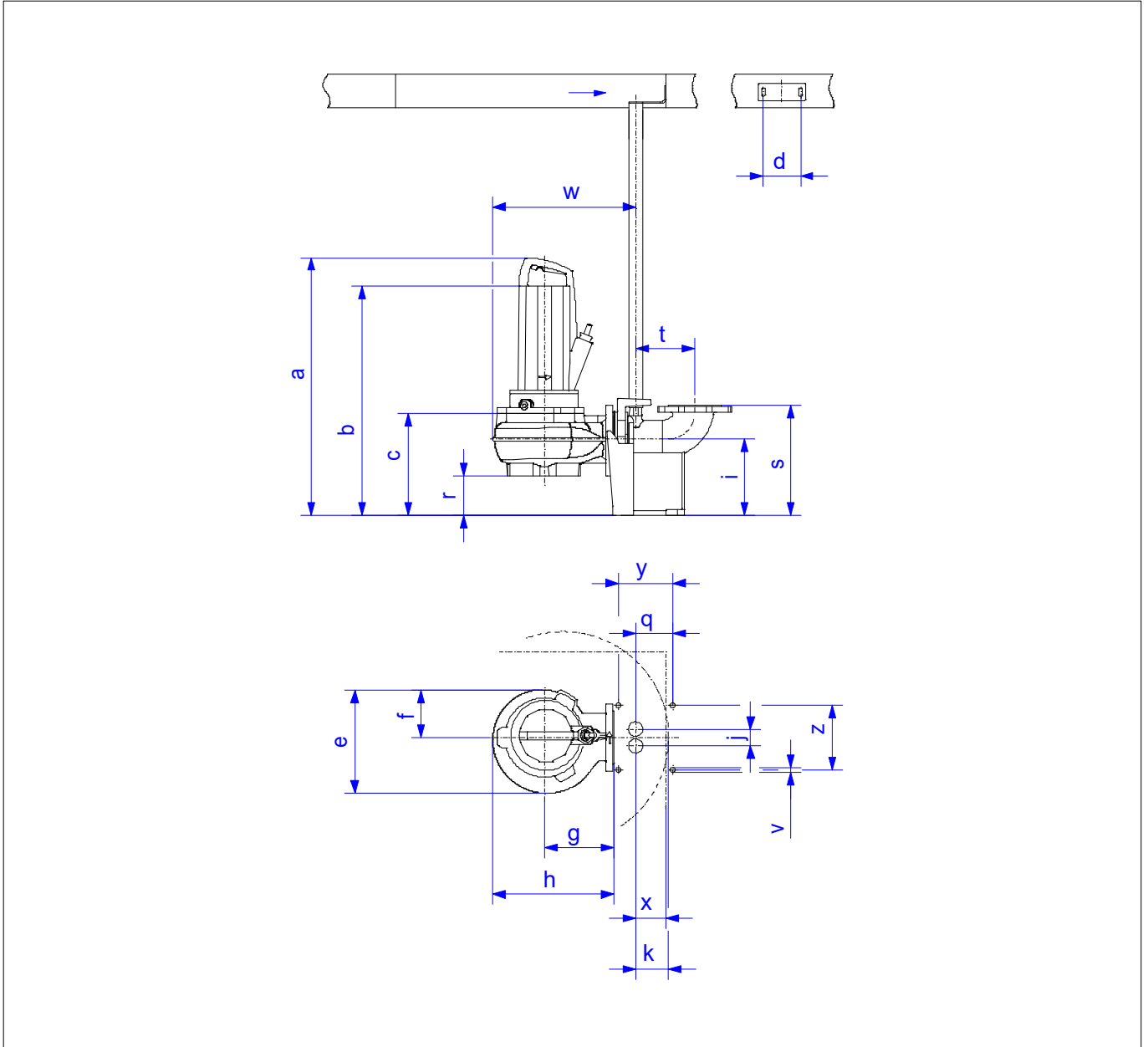
Untitled project 2025-03-05 10:17:21.271

Project name

Installation location

Customer pos. No.

Date 2025-03-05



#### Dimensions

Name	Value	Name	Value
a	743 mm	k	95 mm
b = min. water level	265 mm	q	69 mm
c	265 mm	r	134 mm
d	110 mm	s	300 mm
e	239 mm	t	166 mm
f	126 mm	v	15 mm
g	150 mm	w	330 mm
h	269 mm	x	90 mm
i	m	y	120 mm
j	50 mm	z	170 mm

#### Connections

Suction port	Size3.0 PN10
Discharge port	DN80, Size 3, cutoff PN10
Einhängevorrichtung	DN80/2RK