

**Customer**

## Technical data

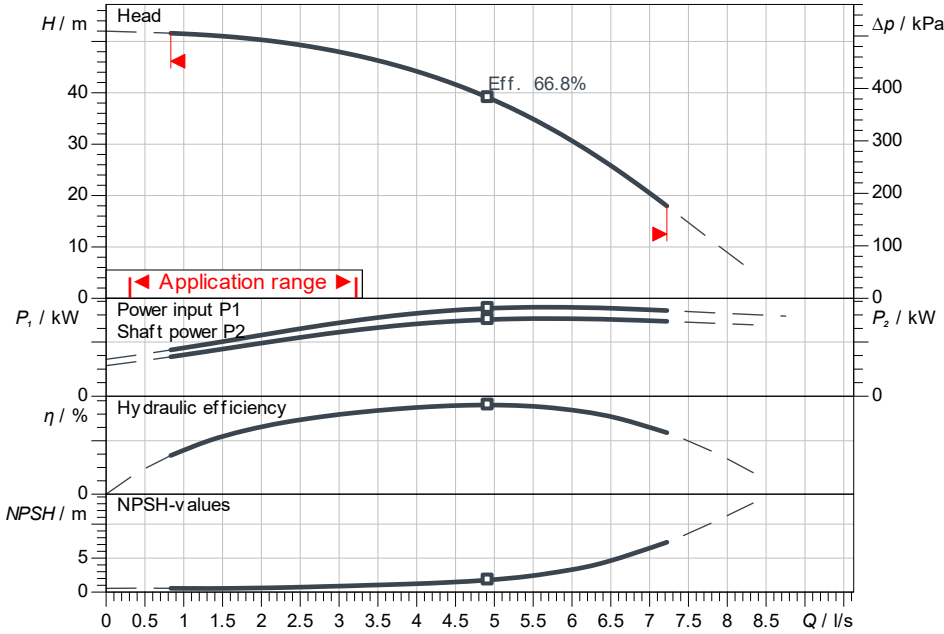
### Fire-extinguishing system FLA-2 Helix V 1604/K-01 PN10

Project ID: Untitled project 2025-03-03 14:15:38.327

Project name  
Installation location  
Customer pos. No.

Date: 2025-03-03

#### Duty chart



#### Requested data

Flow	
Head	
Media	Water 100 %
Fluid temperature	20.00 °C
Density	998.30 kg/m <sup>3</sup>
Kin. viscosity	1.00 mm <sup>2</sup> /s

#### Hydraulic data (Duty point)

Flow	
Head	
Shaft power P2	

#### Product data

Fire-extinguishing system  
FLA-2 Helix V 1604/K-01 PN10

No. of pumps	2
Max. operating pressure	1,000 kPa
Inlet pressure max.	1,000
Fluid temperature	3 °C ... +50 °C
Max. ambient temperature	40 °C
Protection class system	IP55
Protection class of switchgear	IP54
Diaphragm pressure vessel	Yes
Low-water cut-out switchgear	No

#### Motordata per Motor/Pump

Motor efficiency level	IE3
Mains connection	3~ 400 V / 50 Hz
Permitted voltage tolerance	+/- 10 %
Rated speed	2,900 1/min
Rated power P2	3.00 kW
Rated current	5.50 A
Power factor	0.9
Efficiency	
50% / 75% / 100%	85.4/87.1/87.1%
Degree of protection	IP55
Insulation class	F
Motor protection	Yes

#### Fitting dimensions

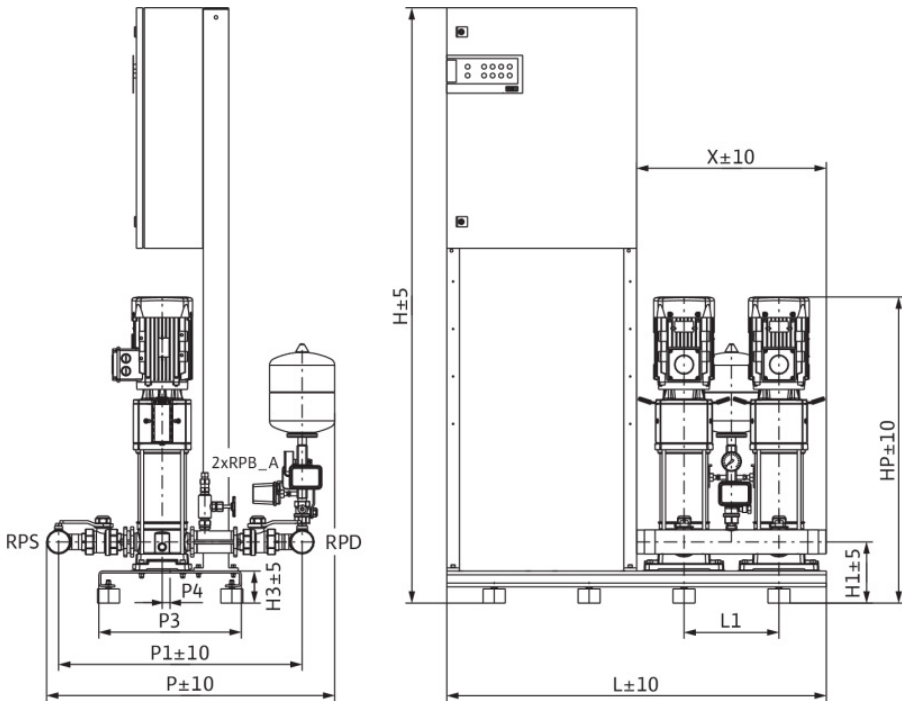
Pipe connection on the suction side	R 2½, PN 10
Pipe connection (pressure side)	R 2½, PN 16

#### Materials

Pump housing	1.4301
Impeller	1.4307
Shaft	1.4301
Shaft seal	Q1BE3GG
Gasket material	EPDM
Pipework material	1.4307

#### Information for order placements

Weight approx.	221 kg
Item number	2534358



#### Dimensions

Dimensions		mm	
H	1,885	L	1,200
H1	195	L1	300
H3	105	P	912
HP	969	P1	770
HS	760	P3	450

P4	25
RPB_A	R ¾
RPD	R 2½, PN
RPS	R 2½, PN

Contact  
E-mail  
Phone

**Customer**

Contact  
E-mail  
Phone

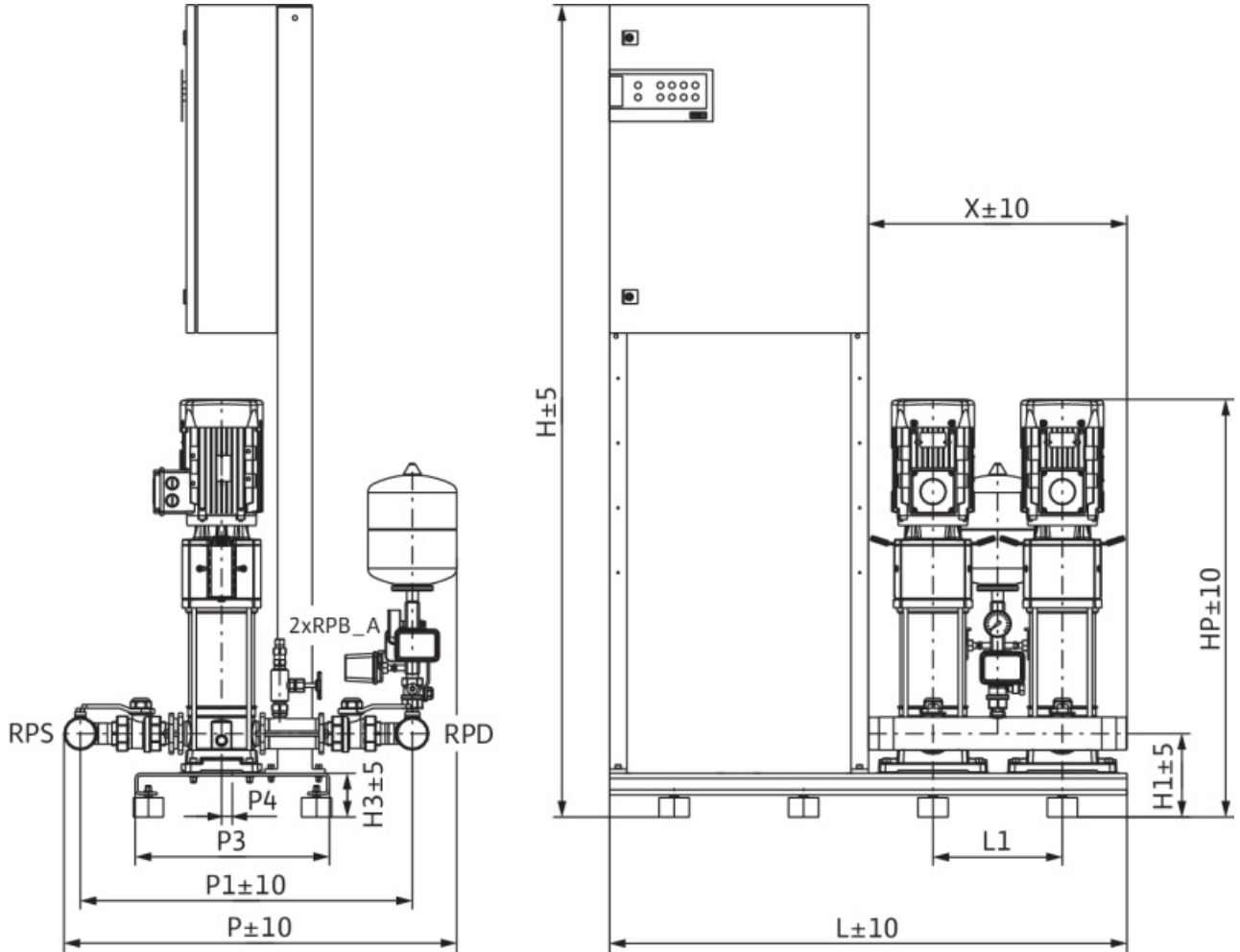
## Dimensions

Fire-extinguishing system  
FLA-2 Helix V 1604/K-01 PN10

Project ID                      Untitled project 2025-03-03 14:15:38.327

Project name  
Installation location  
Customer pos. No.

Date                      2025-03-03



**Standard**

Suction side                      R 2½, PN 10/PN 16  
Discharge side                      R 2½, PN 10/PN 16

**Dimensions**                      mm

Name	Value	Name	Value	Name	Value	Name	Value
H	1,885	P	912				
H1	195	P1	770				
H3	105	P3	450				
HP	969	P4	25				
HS	760	RPB_A	R ¾				
L	1,200	RPD	R 2½, PN 16				
L1	300	RPS	R 2½, PN 10				