

**Customer**

## Technical data

### Multi-pump system

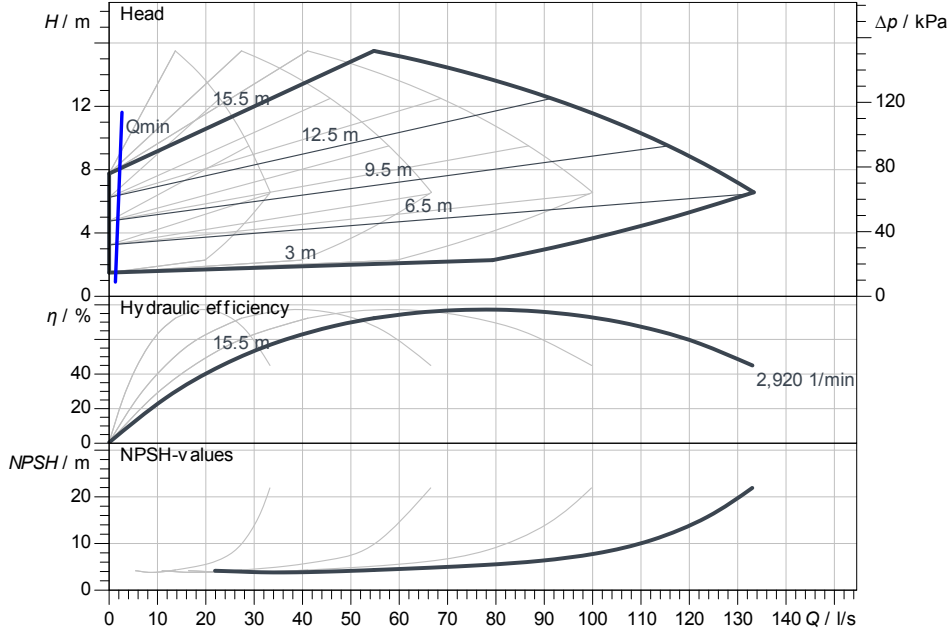
#### SiFlux 31-IP-E 80/110-4/2-SC-10-T4

Project ID: Untitled project 2025-03-17 06:38:35.502

Project name  
Installation location  
Customer pos. No.

Date: 2025-03-17

### Duty chart



### Requested data

Flow  
Head  
Media: Water 100 %  
Fluid temperature: 20.00 °C  
Density: 998.30 kg/m<sup>3</sup>  
Kin. viscosity: 1.00 mm<sup>2</sup>/s

### Hydraulic data (Duty point)

Flow  
Head  
Power input P1  
NPSH

### Product data

Multi-pump system  
SiFlux 31-IP-E 80/110-4/2-SC-10-T4  
No. of pumps: 4  
Standby pump: No  
Kind of operation: dp-v  
Max. operating pressure: 1,000 kPa  
Fluid temperature: 0 °C ... + 100 °C  
Max. ambient temperature: 40 °C

### Motordata per Motor/Pump

Motor design: Standard motor  
Efficiency class: IE4  
Mains connection: 3~ 400 V / 50 Hz  
Permitted voltage tolerance: +-10 %  
Max. speed: 2,900 1/min  
Rated power P2: 4.00 kW  
Power consumption  
Rated current: 12.00 A  
Degree of protection: IP55  
Insulation class: F  
Motor protection

### Fitting dimensions

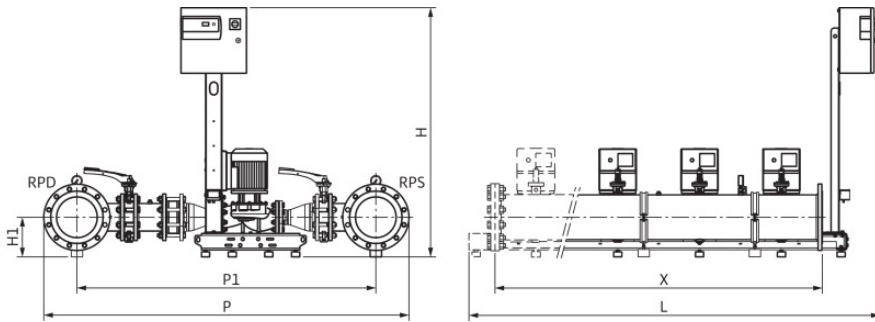
Pipe connection on the suction side: DN 250, PN 16  
Pipe connection (pressure side): DN 250, PN 16

### Materials

Pump housing: 5.1301/EN-GJL-250  
Impeller: PPE/PS-GF30  
Shaft seal: AQ1EGG  
Pipework material: 1.0038

### Information for order placements

Weight approx.: 1237 kg  
Item number: 4196556



### Dimensions

### mm

DNd	DN 250, PN	P	2,235
DNs	DN 250, PN	P1	1,830
H	1,394	X	2,000
H1	239		
L	2,453		