

Customer

Technical data

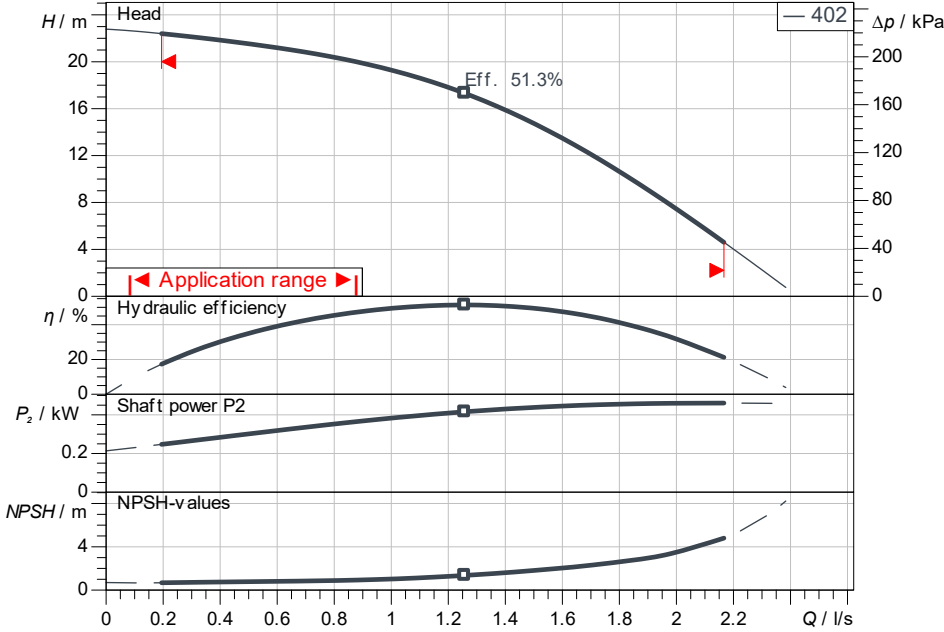
High-pressure multistage centrifugal pump Helix V 402-1/16/E/S/460-60

Project ID: Untitled project 2025-03-05 07:27:14.016

Project name
Installation location
Customer pos. No.

Date: 2025-03-05

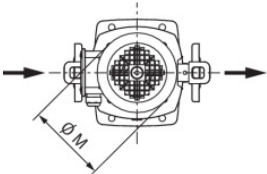
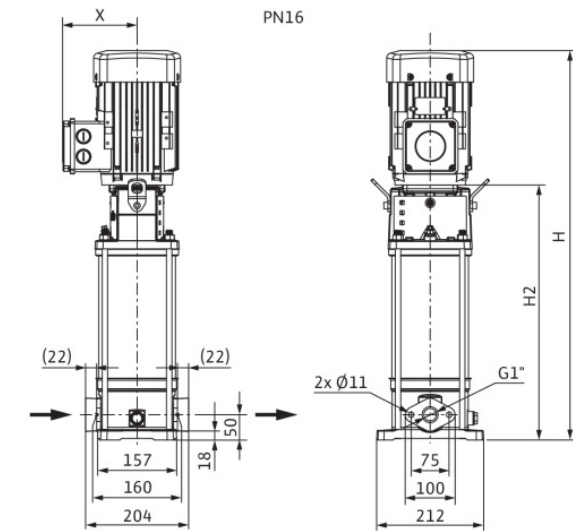
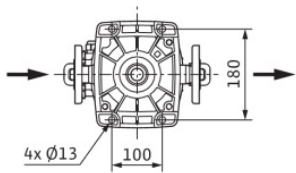
Duty chart



Dimensions

H	534
H2	311
ØM	130
X	121
X	121

mm



Requested data

Flow	
Head	
Media	Water 100 %
Fluid temperature	20.00 °C
Density	998.30 kg/m ³
Kin. viscosity	1.00 mm ² /s

Hydraulic data (Duty point)

Flow	
Head	
Shaft power P2	
Hydraulic efficiency	
NPSH	

Product data

High-pressure multistage centrifugal pump	
Helix V 402-1/16/E/S/460-60	
Max. operating pressure	1,600 kPa
Inlet pressure max.	10 bar
Fluid temperature	-30 °C ... +120 °C
Max. ambient temperature	50 °C
Minimum efficiency index (MEI)	

Motordata per Motor/Pump

Motor efficiency level	IE2
Mains connection	3~ 460 V / 60 Hz
Permitted voltage tolerance	+6 %
Max. speed	3,500 1/min
Rated power P2	0.55 kW
Rated current	1.34 A
Power factor	0.81
Service factor	1.15
Efficiency	
50% / 75% / 100%	//%
Degree of protection	IP55
Insulation class	F
Motor protection	No

Fitting dimensions

Pipe connection on the suction side	G 1, PN 16
Pipe connection (pressure side)	G 1, PN 16

Materials

Pump housing	1.4301
Impeller	1.4307
Shaft	1.4301
Shaft seal	BQ7EGG
Gasket material	EPDM

Information for order placements

Weight approx.	17.9 kg
Item number	4201365