

**Customer**

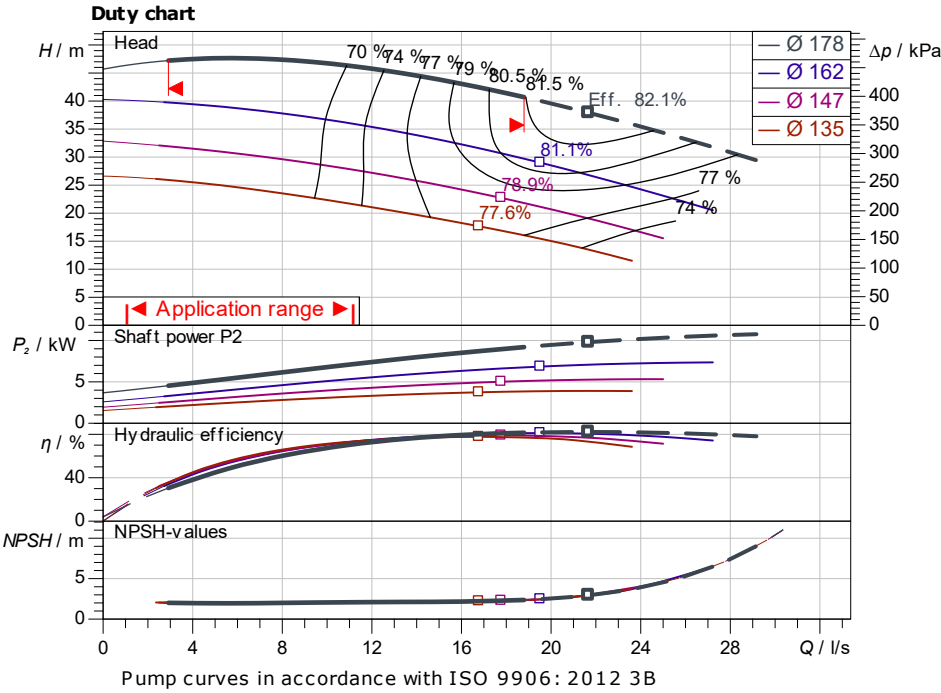
## Technical data

### Glanded standard pump Atmos GIGA-NHT 50/160-9/2-S2

Project ID: Untitled project 2025-03-01 20:45:47.557

Project name  
Installation location  
Customer pos. No.

Date: 2025-03-01



#### Requested data

Flow  
Head  
Media: Water 100 %  
Fluid temperature: 20.00 °C  
Density: 998.30 kg/m<sup>3</sup>  
Kin. viscosity: 1.00 mm<sup>2</sup>/s

#### Hydraulic data (Duty point)

Flow  
Head  
Shaft power P<sub>2</sub>  
Hydraulic efficiency  
NPSH  
Impeller size: 178

#### Product data

Glanded standard pump  
Atmos GIGA-NHT 50/160-9/2-S2  
Max. operating pressure: 2,500 kPa  
Fluid temperature: -20 °C ... +350 °C  
Max. ambient temperature: 50 °C  
Minimum efficiency index (MEI)

#### Motordata per Motor/Pump

Motor efficiency level: IE3  
Mains connection: 3~ 400 V / 50 Hz  
Permitted voltage tolerance: +10 %  
Max. speed: 3,000 1/min  
Rated power P<sub>2</sub>: 9.20 kW  
Rated current  
Power factor  
Efficiency: 50% / 75% / 100% // %  
Degree of protection: IP55  
Insulation class: F  
Motor protection: PTC

#### Fitting dimensions

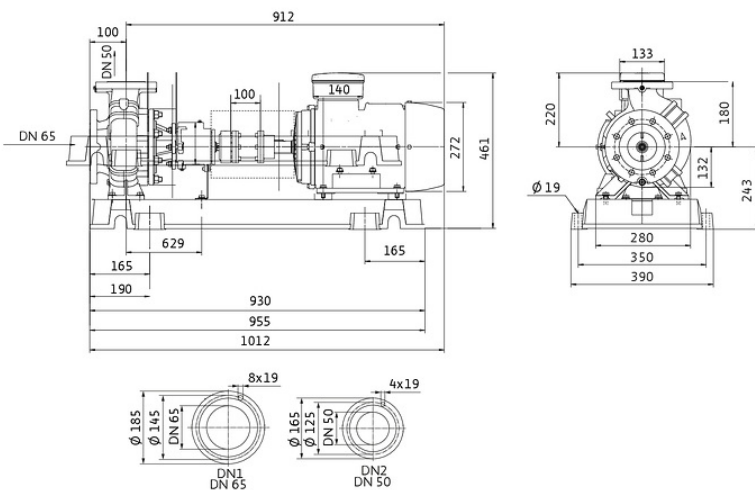
Pipe connection on the suction side: DN 65, PN 25  
Pipe connection (pressure side): DN 50, PN 25  
Port to Port

#### Materials

Pump housing: EN-GJS-400-15  
Impeller: EN-GJL-200  
Shaft: 1.4028  
Shaft seal: AQ1VGG

#### Information for order placements

Weight approx.  
Item number: 6098369



Dimensions: mm

# Hydraulic data

Glanded standard pump  
Atmos GIGA-NHT 50/160-9/2-S2

Project ID: Untitled project 2025-03-01 20:45:47.557

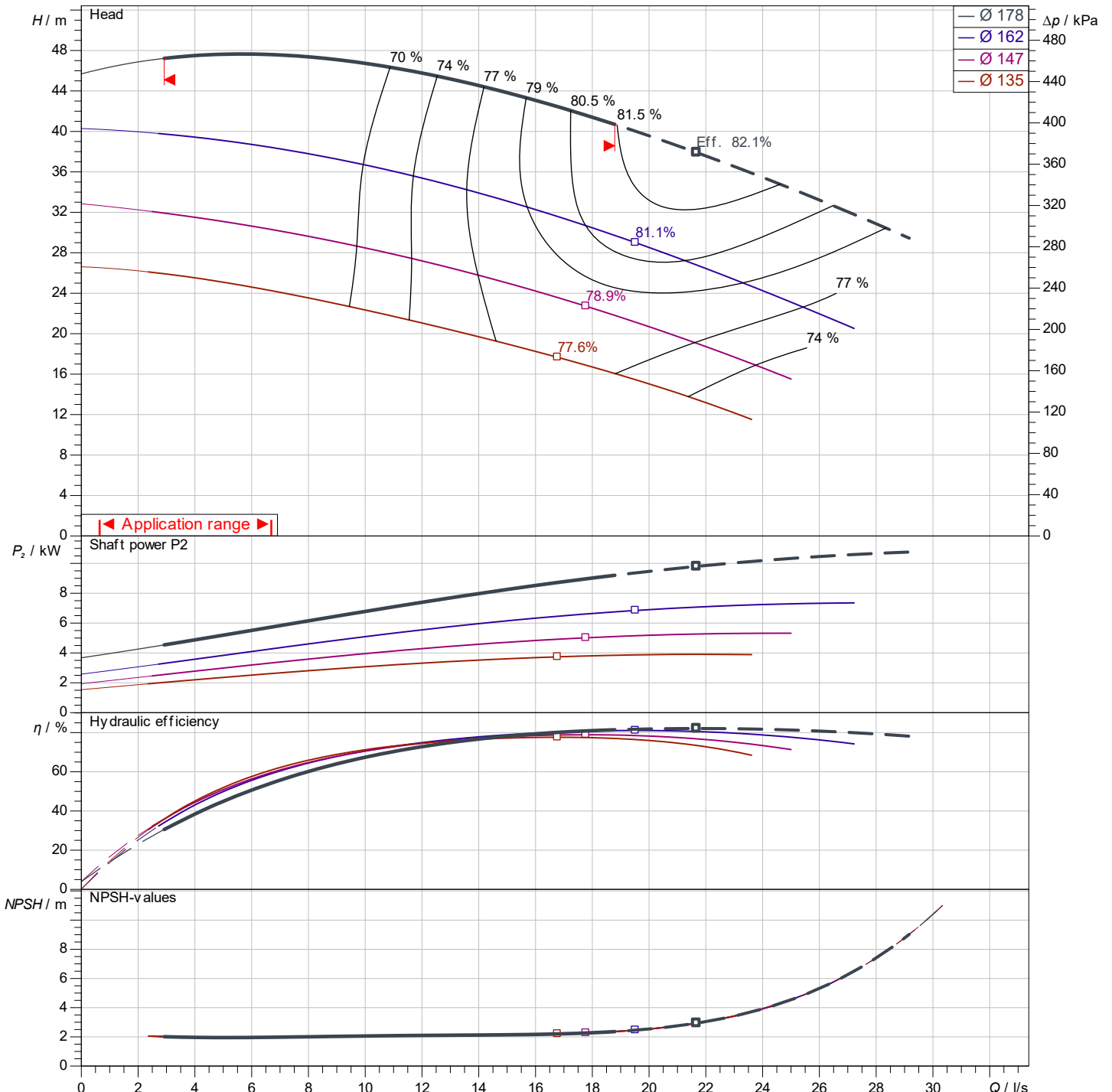
Project name  
Installation location  
Customer pos. No.

Date: 2025-03-01

## Operating data

Rotational speed <b>2955 1/min</b>	Frequency <b>50 Hz</b>	Duty point <b>Q =</b>	<b>H =</b>	Suction port <b>DN 65</b>	Discharge port <b>DN 50</b>
---------------------------------------	---------------------------	--------------------------	------------	------------------------------	--------------------------------

Power data referred to: Water; 20°C; 998.3kg/m<sup>3</sup>; 1.005mm<sup>2</sup>/s ±10 % tolerance with linear U/f frequency control



Pump curves in accordance with ISO 9906: 2012 3B

Contact  
E-mail  
Phone

**Customer**

Contact  
E-mail  
Phone

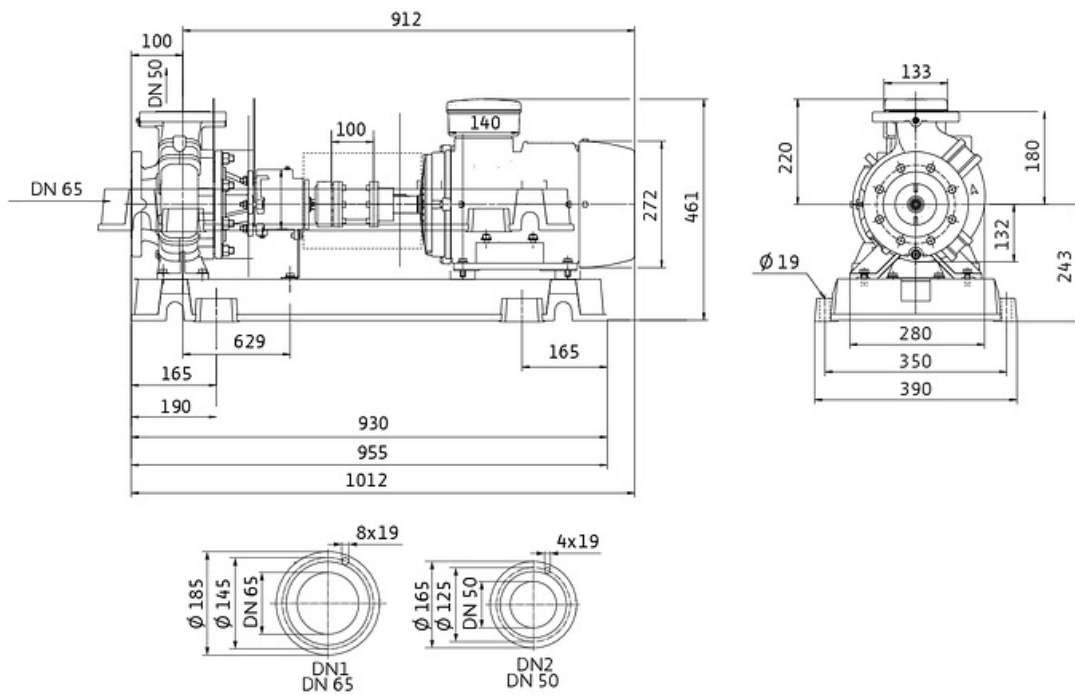
## Dimensions

Glanded standard pump  
Atmos GIGA-NHT 50/160-9/2-S2

Project ID                      Untitled project 2025-03-01 20:45:47.557

Project name  
Installation location  
Customer pos. No.

Date                      2025-03-01



Standard

Suction side                      DN 65, PN 25

Discharge side                    DN 50, PN 25

**Dimensions**                    mm

Name	Value	Name	Value	Name	Value	Name	Value
------	-------	------	-------	------	-------	------	-------