

**Customer**

## Technical data

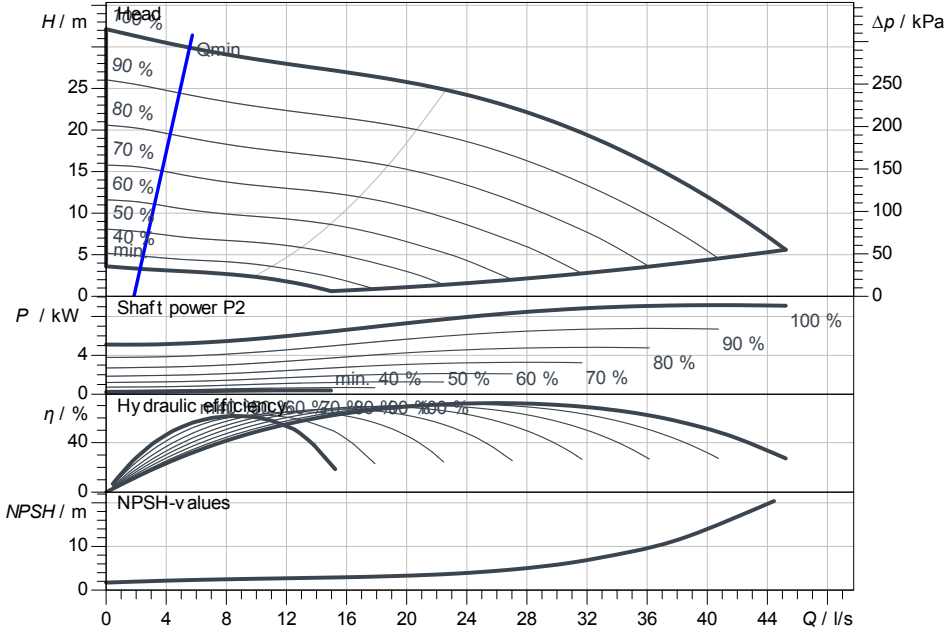
### Multi-pump system COR-2 MVIE 9501/SCe

Project ID                      Untitled project 2025-03-01 23:56:42.904

Project name  
Installation location  
Customer pos. No.

Date                      2025-03-02

#### Duty chart



#### Requested data

Flow  
Head  
Media                      Water 100 %  
Fluid temperature        20.00 °C  
Density                    998.30 kg/m<sup>3</sup>  
Kin. viscosity             1.00 mm<sup>2</sup>/s

#### Hydraulic data (Duty point)

Flow  
Head  
Shaft power P2

#### Product data

Multi-pump system  
COR-2 MVIE 9501/SCe  
Control                    With frequency converter  
No. of pumps             2  
Max. operating pressure   1,600 kPa  
Inlet pressure max.       10 bar  
Fluid temperature         3 °C ... +60 °C  
Max. ambient temperature 50 °C  
Protection class motor   IP55  
Protection class of switchgear IP54  
Diaphragm pressure vessel Yes  
Low-water cut-out switchgear Yes

#### Motordata per Motor/Pump

Motor efficiency level     IE5  
Mains connection         3~ 400 V / 50 Hz  
Permitted voltage tolerance  
Max. speed  
Rated power P2            11.00 kW  
Rated current             19.60 A

Efficiency  
50% / 75% / 100%       //94.2%  
Insulation class          F  
Motor protection         Yes

#### Fitting dimensions

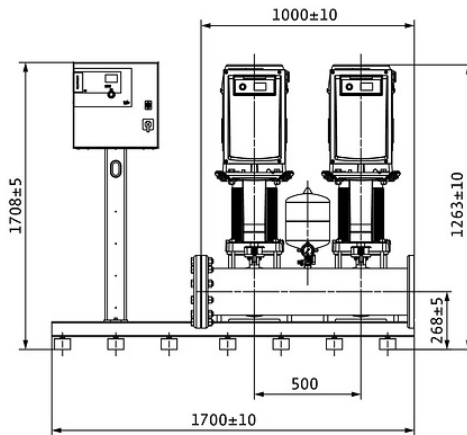
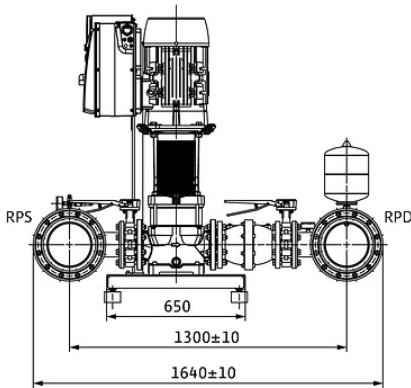
Pipe connection on the suction side DN 200, PN 16  
Pipe connection (pressure side) DN 200, PN 16

#### Materials

Pump housing             5.1301/EN-GJL-250  
  
Impeller                  1.4408  
Shaft                      1.4057  
Shaft seal                BQ7EGG  
Gasket material         EPDM  
Pipework material        1.4404

#### Information for order placements

Weight approx.           757 kg  
Item number               2552092



#### Dimensions                      mm

Contact  
E-mail  
Phone

**Customer**

Contact  
E-mail  
Phone

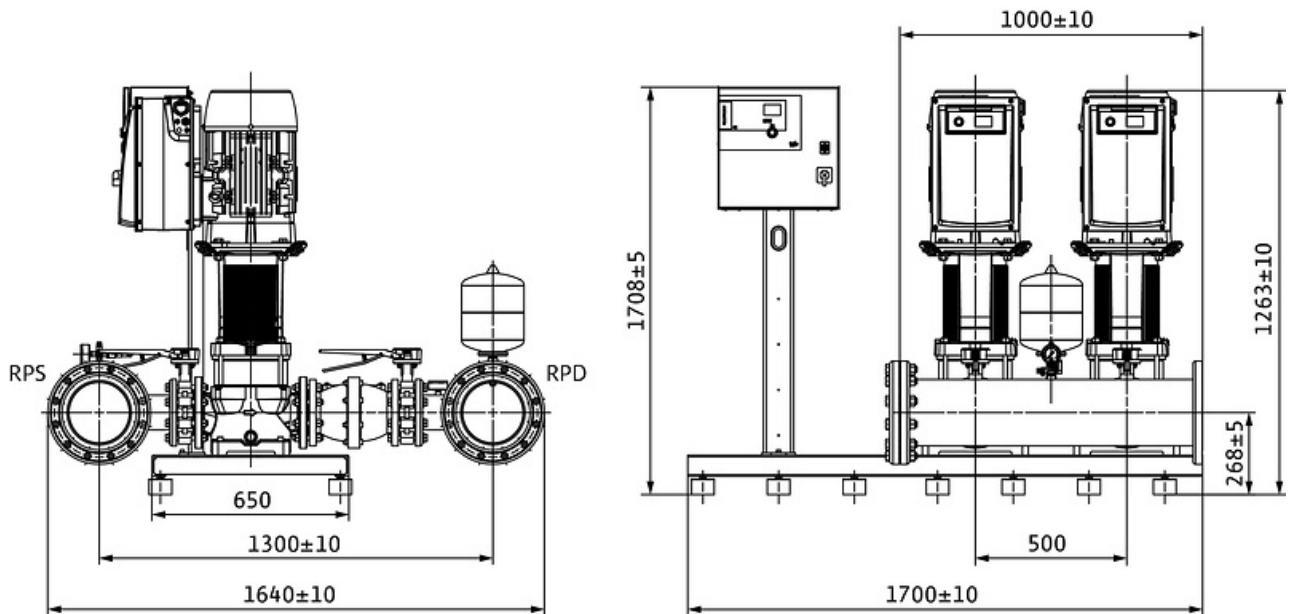
## Dimensions

Multi-pump system  
COR-2 MVIE 9501/SCe

Project ID                      Untitled project 2025-03-01 23:56:42.904

Project name  
Installation location  
Customer pos. No.

Date                      2025-03-02



**Standard**

Suction side                      DN 200, PN 16  
Discharge side                      DN 200, PN 16

**Dimensions**                      mm

Name	Value	Name	Value	Name	Value	Name	Value
------	-------	------	-------	------	-------	------	-------