

Customer

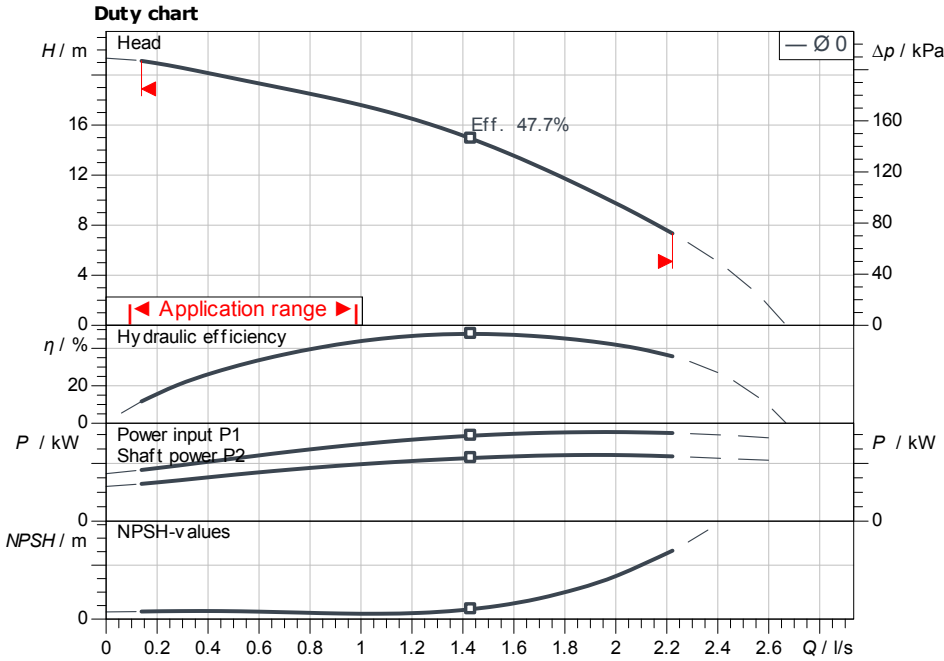
Technical data

Non self-priming multistage centrifugal pump MHIL 502-E-1-230-50-2

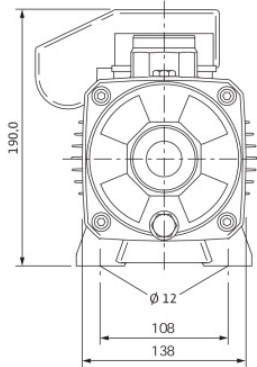
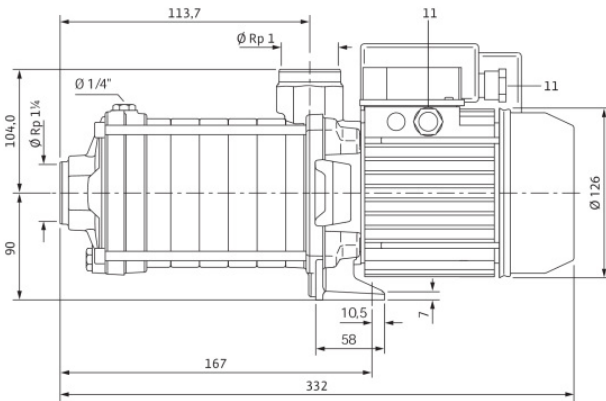
Project ID Untitled project 2025-03-03 10:52:49.529

Project name
Installation location
Customer pos. No.

Date 2025-03-03



ISO 9906: 2012 3B



Requested data

Flow
Head
Media Water 100 %
Fluid temperature 20.00 °C
Density 998.30 kg/m³
Kin. viscosity 1.00 mm²/s

Hydraulic data (Duty point)

Flow
Head
Shaft power P2
Hydraulic efficiency
NPSH

Product data

Non self-priming multistage centrifugal pump
MHIL 502-E-1-230-50-2
Max. operating pressure 1,000 kPa
Inlet pressure max. 6 bar
Fluid temperature -15 °C ... +90 °C
Max. ambient temperature 40 °C

Motordata per Motor/Pump

Motor efficiency level IE1
Mains connection 1~ 230 V / 50 Hz
Permitted voltage tolerance + -10 %
Max. speed 2,900 1/min
Rated power P2 0.55 kW
Rated current 4.10 A
Power factor 0.97
Efficiency 50% / 75% / 100% 59.2/64.4/63.9%
Degree of protection X4
Insulation class F
Motor protection

Fitting dimensions

Pipe connection on the suction side Rp 1 1/4, PN 10
Pipe connection (pressure side) Rp 1, PN 10

Materials

Pump housing 5.1301/EN-GJL-250
Impeller 1.4301
Shaft 1.4028
Shaft seal Q1BE3GG
Gasket material EPDM

Information for order placements

Weight approx. 12.9 kg
Item number 4083904

Dimensions mm