

**Customer**

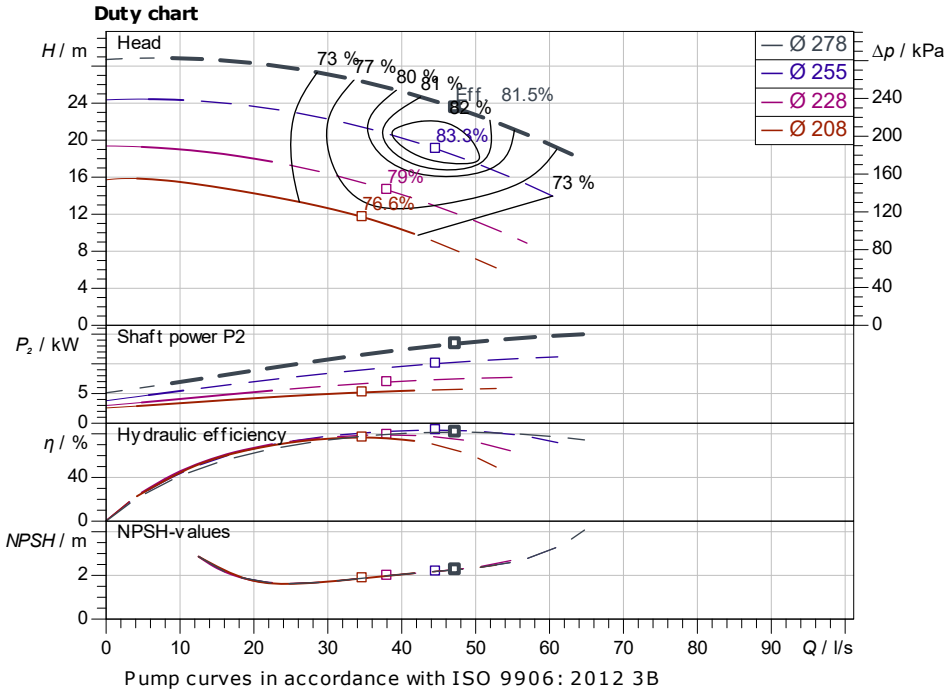
## Technical data

Glanded standard pump  
Atmos GIGA-NHT 100/250-5.5/4-S2

Project ID: Untitled project 2025-03-01 20:45:47.557

Project name  
Installation location  
Customer pos. No.

Date: 2025-03-01



**Requested data**

Flow  
Head  
Media: Water 100 %  
Fluid temperature: 20.00 °C  
Density: 998.30 kg/m<sup>3</sup>  
Kin. viscosity: 1.00 mm<sup>2</sup>/s

**Hydraulic data (Duty point)**

Flow  
Head  
Shaft power P2  
Hydraulic efficiency  
NPSH  
Impeller size: 278

**Product data**

Glanded standard pump  
Atmos GIGA-NHT 100/250-5.5/4-S2  
Max. operating pressure: 2,500 kPa  
Fluid temperature: -20 °C ... +350 °C  
Max. ambient temperature: 50 °C  
Minimum efficiency index (MEI)

**Motordata per Motor/Pump**

Motor efficiency level: IE3  
Mains connection: 3~ 400 V / 50 Hz  
Permitted voltage tolerance: +10 %  
Max. speed: 1,460 1/min  
Rated power P2: 5.50 kW  
Rated current: 10.40 A  
Power factor: 0.8  
Efficiency: 50% / 75% / 100% → 89/89.6/89.7%  
Degree of protection: IP55  
Insulation class: F  
Motor protection: No

**Fitting dimensions**

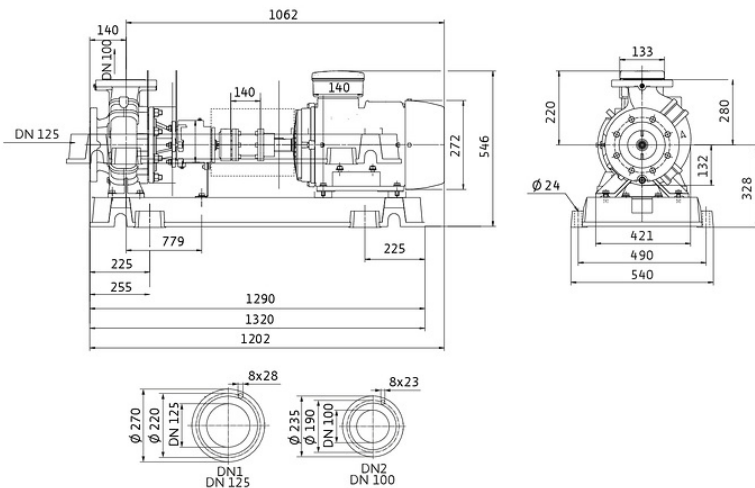
Pipe connection on the suction side: DN 125, PN 25  
Pipe connection (pressure side): DN 100, PN 25  
Port to Port

**Materials**

Pump housing: EN-GJS-400-15  
Impeller: EN-GJL-200  
Shaft: 1.4028  
Shaft seal: AQ1VGG

**Information for order placements**

Weight approx.  
Item number: 6095372



**Dimensions** mm



Contact  
E-mail  
Phone

**Customer**

Contact  
E-mail  
Phone

## Hydraulic data

Glanded standard pump

Atmos GIGA-NHT 100/250-5.5/4-S2

Project ID

Untitled project 2025-03-01 20:45:47.557

Project name

Installation location

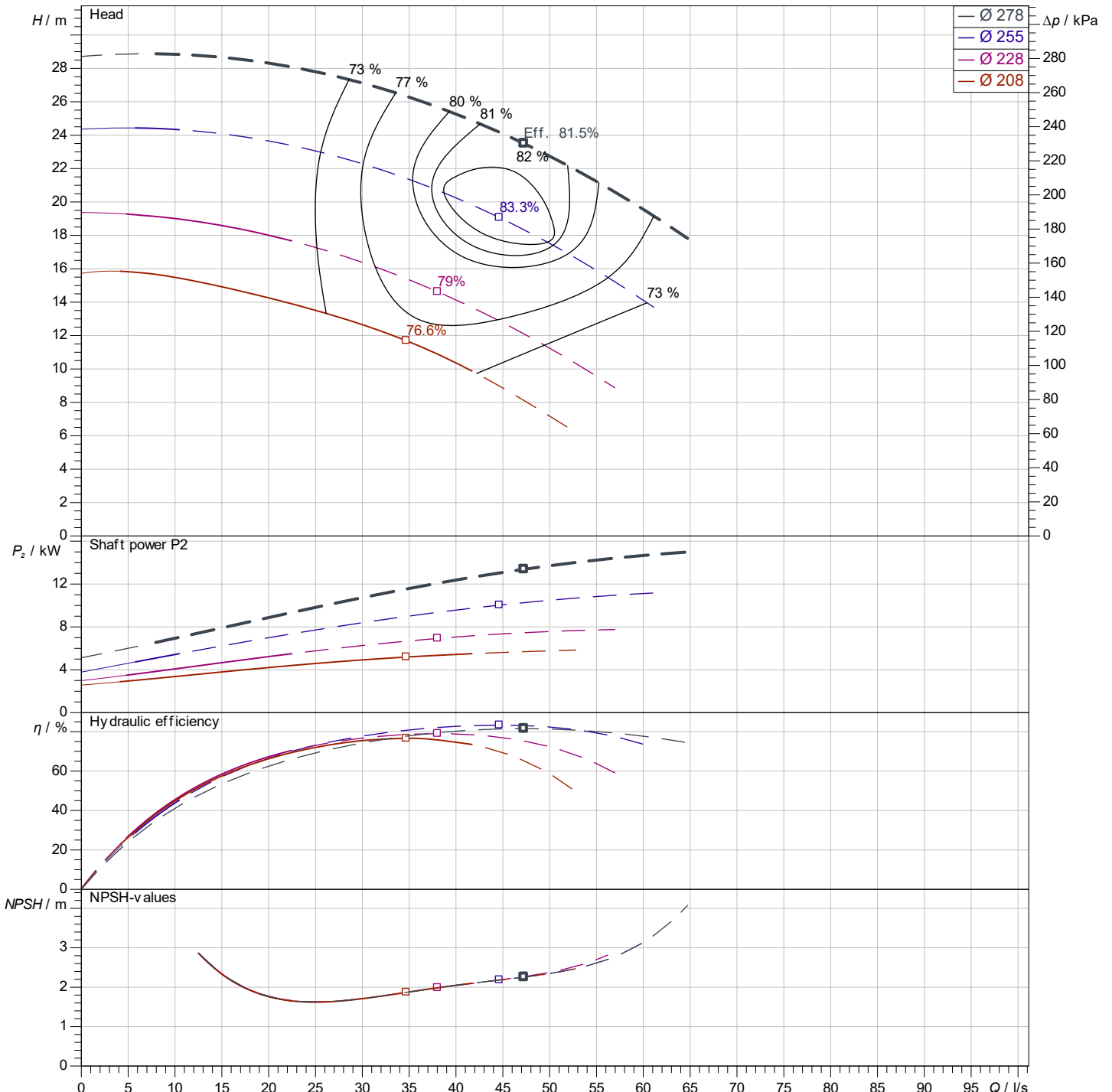
Customer pos. No.

Date 2025-03-01

## Operating data

Rotational speed <b>1469 1/min</b>	Frequency <b>50 Hz</b>	Duty point <b>Q =</b>	<b>H =</b>	Suction port <b>DN 125</b>	Discharge port <b>DN 100</b>
---------------------------------------	---------------------------	--------------------------	------------	-------------------------------	---------------------------------

Power data referred to: Water; 20°C; 998.3kg/m<sup>3</sup>; 1.005mm<sup>2</sup>/s ±10 % tolerance with linear U/f frequency control



Pump curves in accordance with ISO 9906: 2012 3B

Contact  
E-mail  
Phone

**Customer**

Contact  
E-mail  
Phone

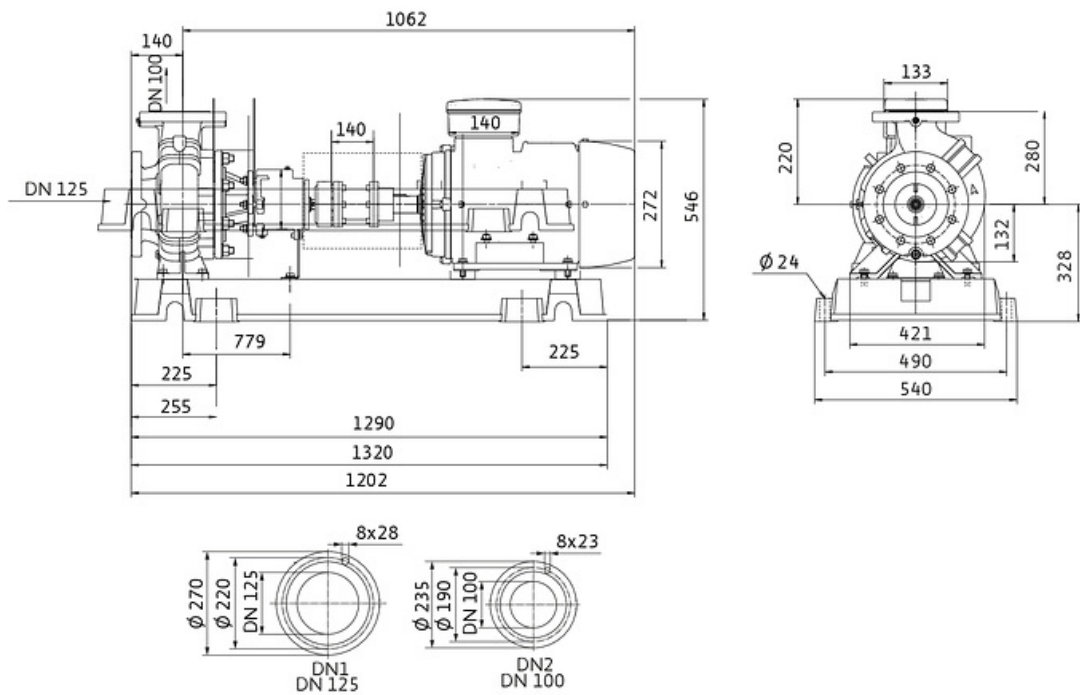
## Dimensions

Glanded standard pump  
Atmos GIGA-NHT 100/250-5.5/4-S2

Project ID                      Untitled project 2025-03-01 20:45:47.557

Project name  
Installation location  
Customer pos. No.

Date                      2025-03-01



Standard

Suction side                      DN 125, PN 25

Discharge side                    DN 100, PN 25

**Dimensions**                    mm

Name	Value	Name	Value	Name	Value	Name	Value
------	-------	------	-------	------	-------	------	-------