

Contact
E-mail
Phone

Customer

Contact
E-mail
Phone

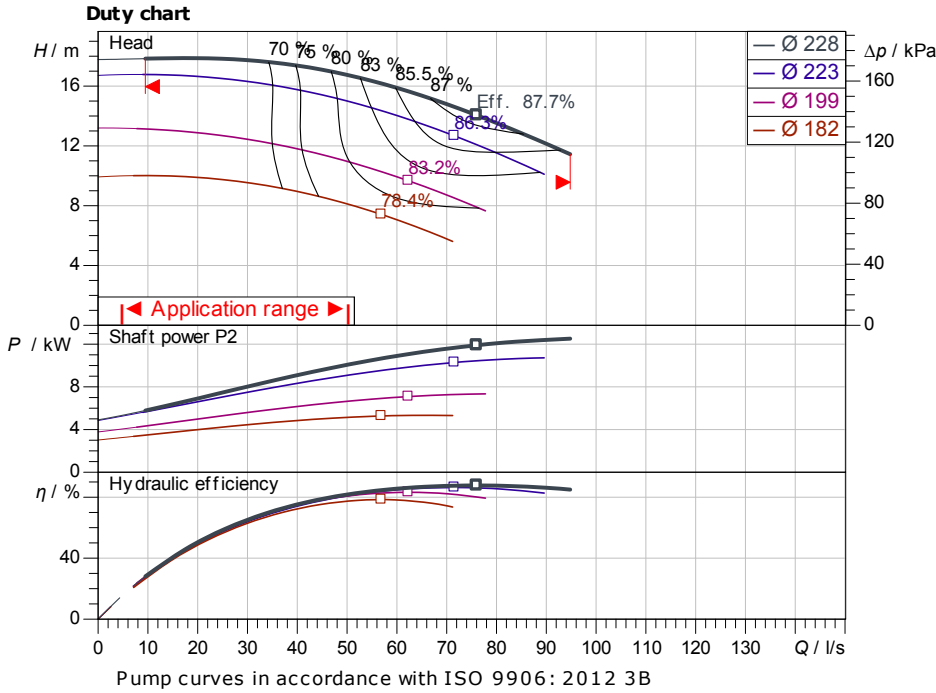
Technical data

Glanded standard pump
Atmos GIGA-N 125/200-B-IE4

Project ID: Untitled project 2025-03-01 20:23:09.313

Project name
Installation location
Customer pos. No.

Date: 2025-03-01



Requested data

Flow
Head
Media: Water 100 %
Fluid temperature: 20.00 °C
Density: 998.30 kg/m³
Kin. viscosity: 1.00 mm²/s

Hydraulic data (Duty point)

Flow
Head
Shaft power P_2
Hydraulic efficiency
NPSH
Impeller size: 228

Product data

Glanded standard pump
Atmos GIGA-N 125/200-B-IE4
Max. operating pressure: 1,600 kPa
Fluid temperature: -20 °C ... +140 °C
Max. ambient temperature: 40 °C
Minimum efficiency index (MEI)

Motordata per Motor/Pump

Motor efficiency level
Mains connection: V / Hz
Permitted voltage tolerance
Max. speed
Rated power P_2
Rated current
Power factor
Efficiency: 50% / 75% / 100% // %
Degree of protection
Insulation class
Motor protection

Fitting dimensions

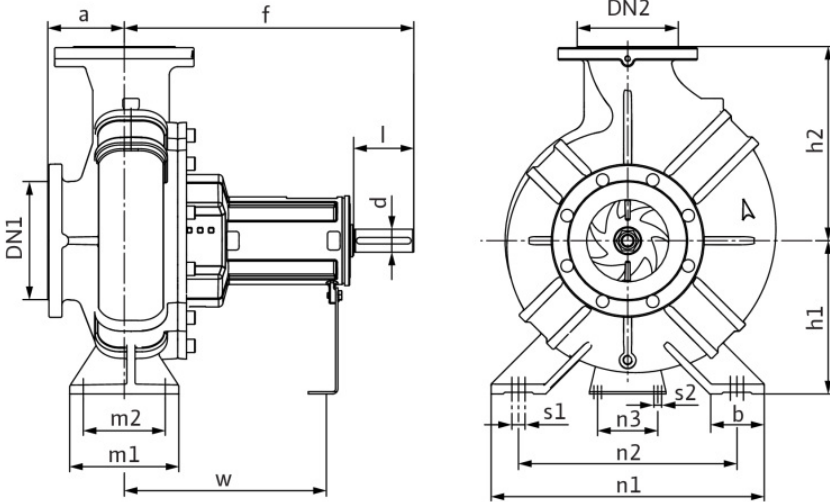
Pipe connection on the suction side: DN 150, PN 16
Pipe connection (pressure side): DN 125, PN 16
Port to Port

Materials

Pump housing: 5.1301/EN-GJL-250
Impeller: EN-GJL-200
Lantern: 5.1301/EN-GJL-250
Shaft: 1.4021
Shaft seal: AQ1EGG

Information for order placements

Weight approx.
Item number



Dimensions

mm

a	140	DN2	DN 125,	h2	315	n2	315
b	80	f	470	l	80	n3	110
d	32	h1	250	m1	160	Ø k	240
dL	23	h1	250	m2	120	Ø d	211
DN1	DN 150,	h2	315	n1	400	Ø D	285



Contact
E-mail
Phone

Customer

Contact
E-mail
Phone

Hydraulic data

Glanded standard pump
Atmos GIGA-N 125/200-B-IE4

Project ID: Untitled project 2025-03-01 20:23:09.313

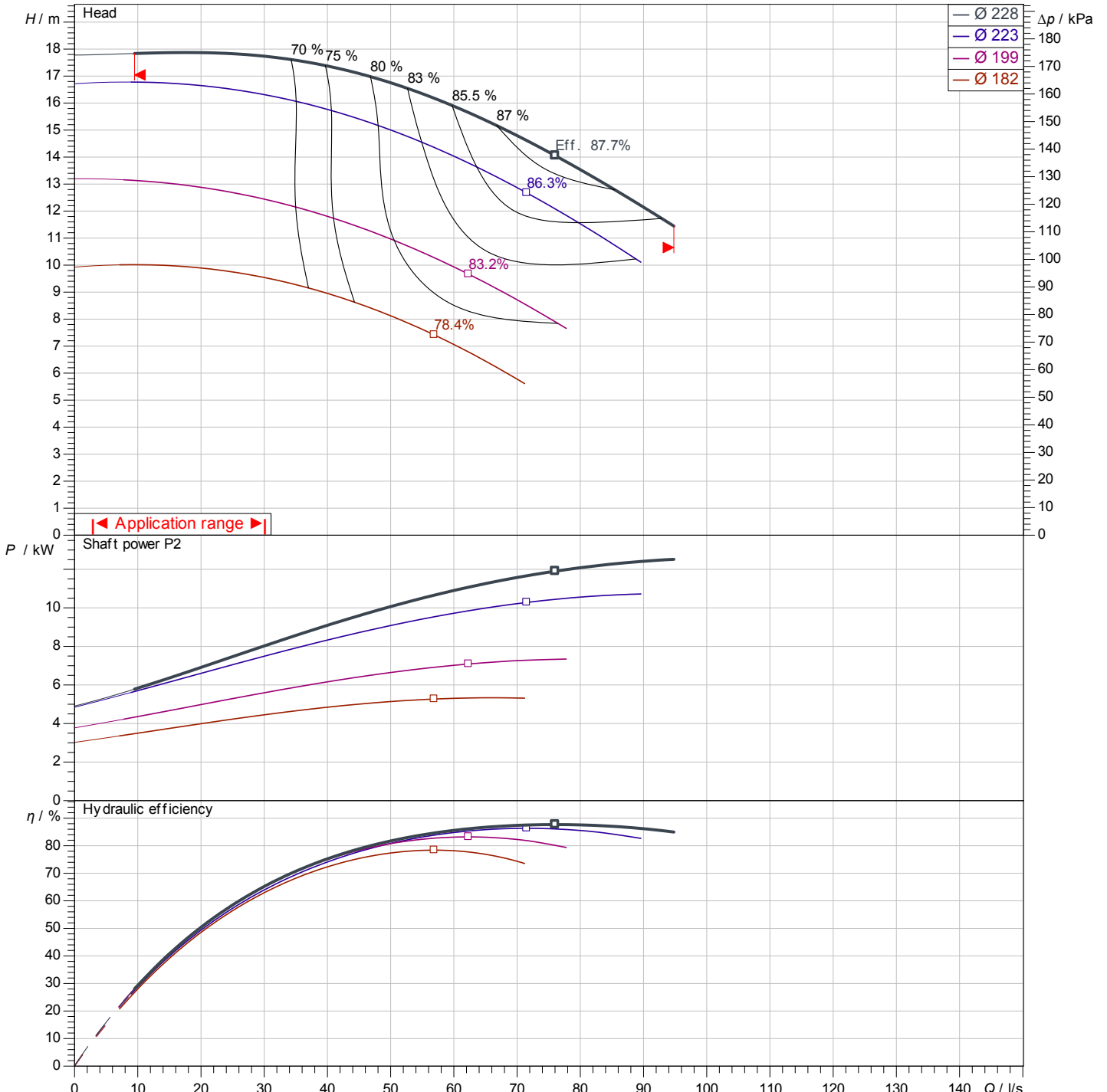
Project name
Installation location
Customer pos. No.

Date: 2025-03-01

Operating data

Rotational speed 1467 1/min	Frequency Hz	Duty point Q =	H =	Suction port DN 150	Discharge port DN 125
---------------------------------------	------------------------	--------------------------	------------	-------------------------------	---------------------------------

Power data referred to: Water; 20°C; 998.3kg/m³; 1.005mm²/s ±10 % tolerance with linear U/f frequency control



Pump curves in accordance with ISO 9906: 2012 3B

Contact
E-mail
Phone

Customer

Contact
E-mail
Phone

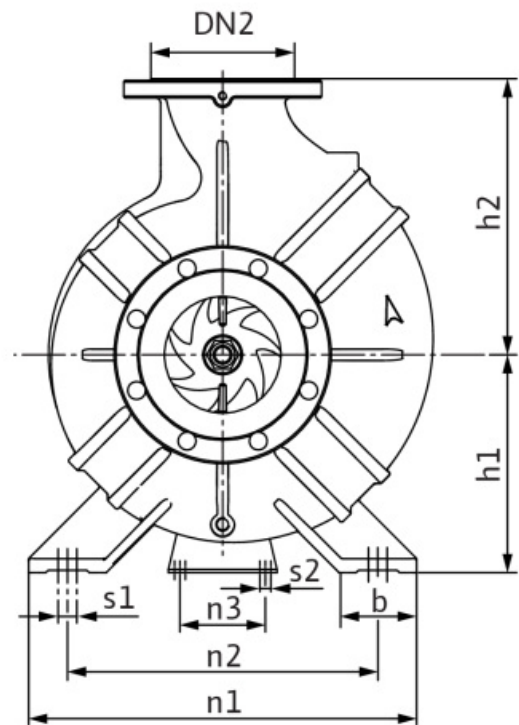
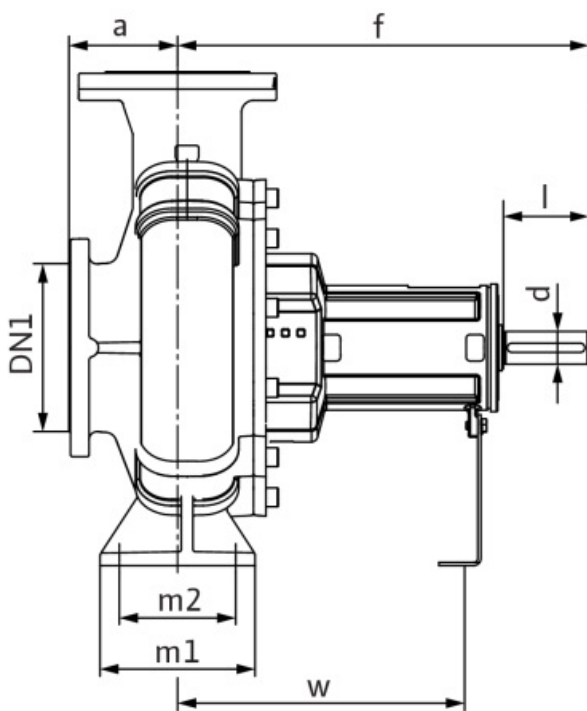
Dimensions

Glanded standard pump
Atmos GIGA-N 125/200-B-IE4

Project ID Untitled project 2025-03-01 20:23:09.313

Project name
Installation location
Customer pos. No.

Date 2025-03-01



Bareshaft

Suction side DN 150, PN 16
Discharge side DN 125, PN 16

Dimensions mm

Name	Value	Name	Value	Name	Value	Name	Value
a	140	h1	250	n1	400	s2	12
b	80	h1	250	n2	315	w	340
d	32	h2	315	n3	110	x	140
dL	23	h2	315	Ø k	240		
DN1	DN 150, PN 16	l	80	Ø d	211		
DN2	DN 125, PN 16	m1	160	Ø D	285		
f	470	m2	120	s1	16		