

**Customer**

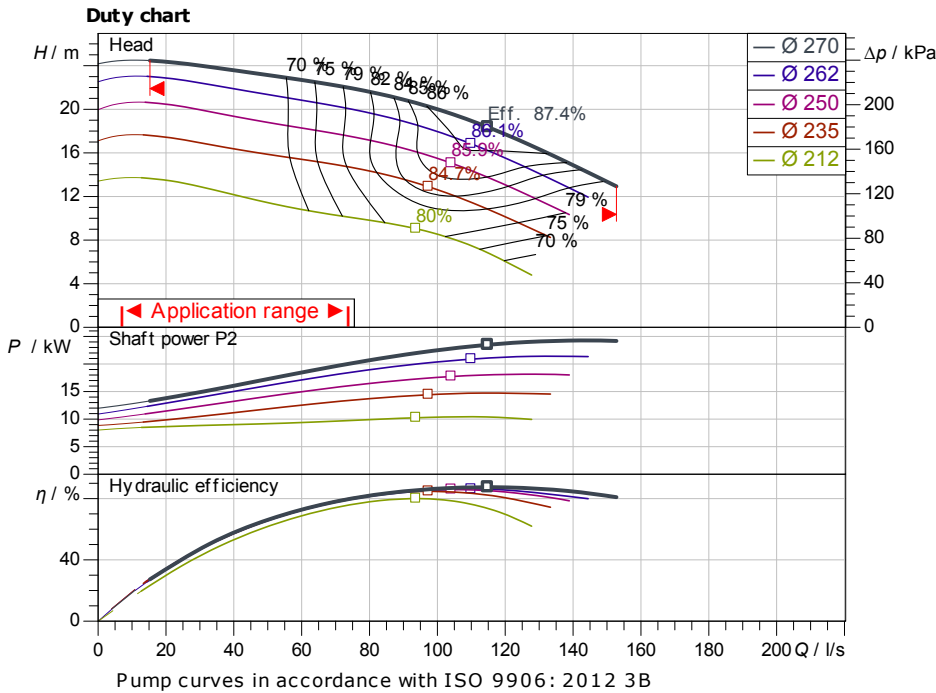
## Technical data

### Glanded standard pump Atmos GIGA-N 150/250-B

Project ID                      Untitled project 2025-03-01 20:23:09.313

Project name  
Installation location  
Customer pos. No.

Date                      2025-03-01



**Requested data**

Flow  
Head  
Media                      Water 100 %  
Fluid temperature       20.00 °C  
Density                    998.30 kg/m<sup>3</sup>  
Kin. viscosity            1.00 mm<sup>2</sup>/s

**Hydraulic data (Duty point)**

Flow  
Head  
Shaft power P2  
Hydraulic efficiency  
NPSH  
Impeller size            270

**Product data**

Glanded standard pump  
Atmos GIGA-N 150/250-B  
Max. operating pressure   1,600 kPa  
Fluid temperature        -20 °C ... +140 °C  
Max. ambient temperature  40 °C  
Minimum efficiency index (MEI)

**Motordata per Motor/Pump**

Motor efficiency level  
Mains connection        V / Hz  
Permitted voltage tolerance  
Max. speed  
Rated power P2  
Rated current  
Power factor  
Efficiency                50% / 75% / 100%        //%  
Degree of protection  
Insulation class  
Motor protection

**Fitting dimensions**

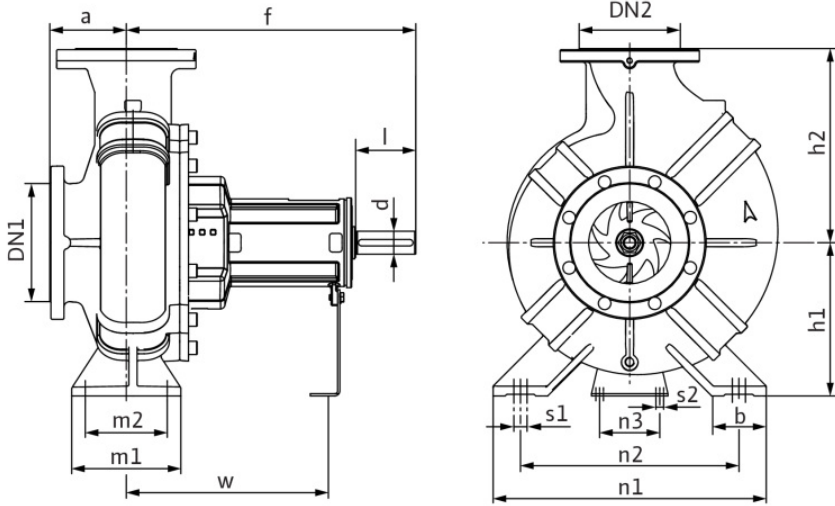
Pipe connection on the suction side DN 200, PN 16  
Pipe connection (pressure side) DN 150, PN 16  
Port to Port

**Materials**

Pump housing            5.1301/EN-GJL-250  
  
Impeller                 EN-GJL-200  
Lantern                 5.1301/EN-GJL-250  
Shaft                    1.4021  
Shaft seal               AQ1EGG

**Information for order placements**

Weight approx.  
Item number             6090505



**Dimensions**

mm

a	160	DN2	DN 150,	h2	375	n2	400
b	100	f	530	l	110	n3	110
d	42	h1	280	m1	200	Ø k	295
dL	23	h1	280	m2	150	Ø d	266
DN1	DN 200,	h2	375	n1	500	Ø D	340



Contact  
E-mail  
Phone

Customer

Contact  
E-mail  
Phone

# Hydraulic data

Glanded standard pump  
Atmos GIGA-N 150/250-B

Project ID: Untitled project 2025-03-01 20:23:09.313

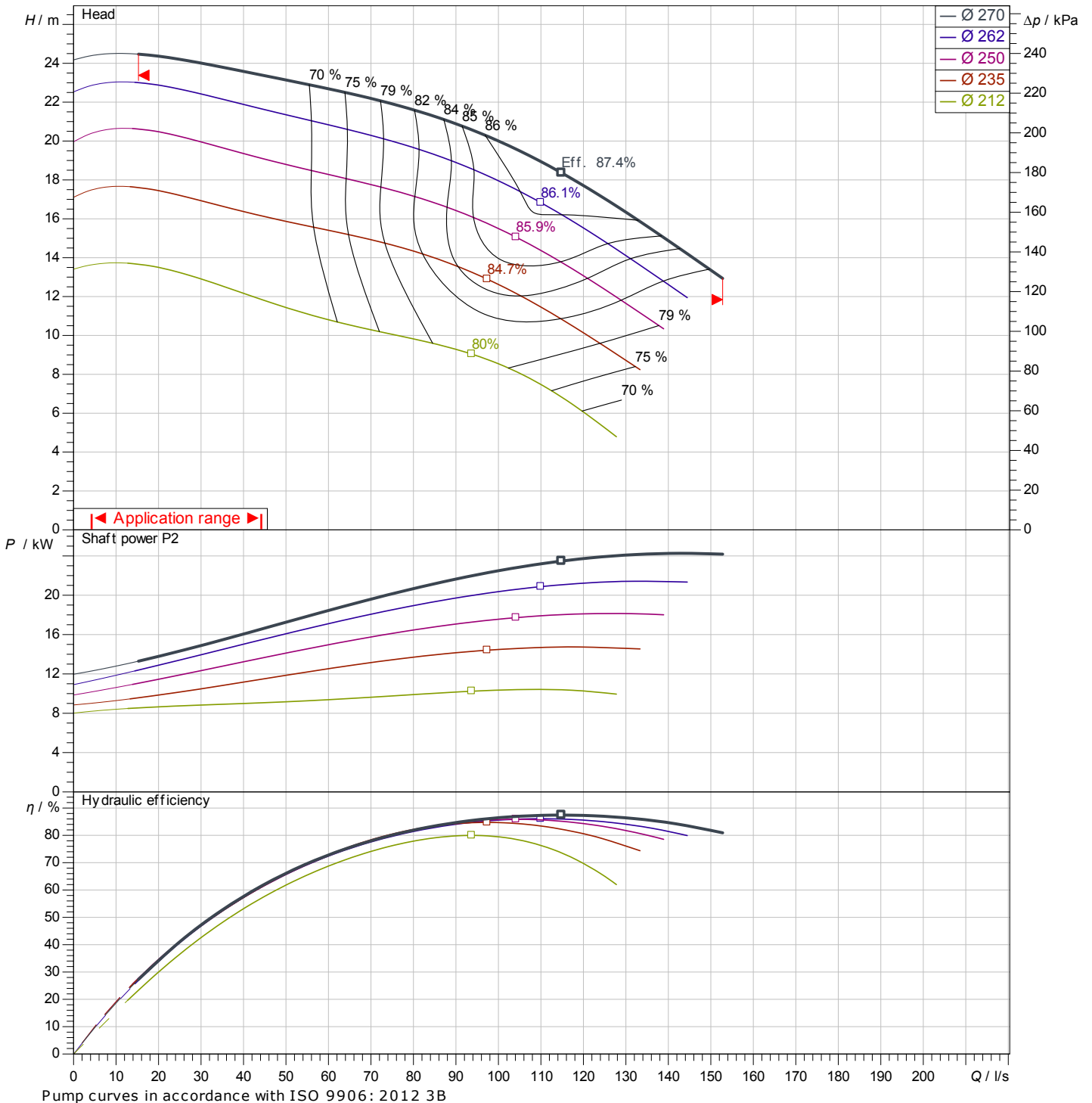
Project name  
Installation location  
Customer pos. No.

Date 2025-03-01

## Operating data

Rotational speed <b>1482 1/min</b>	Frequency <b>Hz</b>	Duty point <b>Q =</b>	<b>H =</b>	Suction port <b>DN 200</b>	Discharge port <b>DN 150</b>
---------------------------------------	------------------------	--------------------------	------------	-------------------------------	---------------------------------

Power data referred to: Water; 20°C; 998.3kg/m³; 1.005mm²/s ±10 % tolerance with linear U/f frequency control



Pump curves in accordance with ISO 9906: 2012 3B

Contact  
E-mail  
Phone

**Customer**

Contact  
E-mail  
Phone

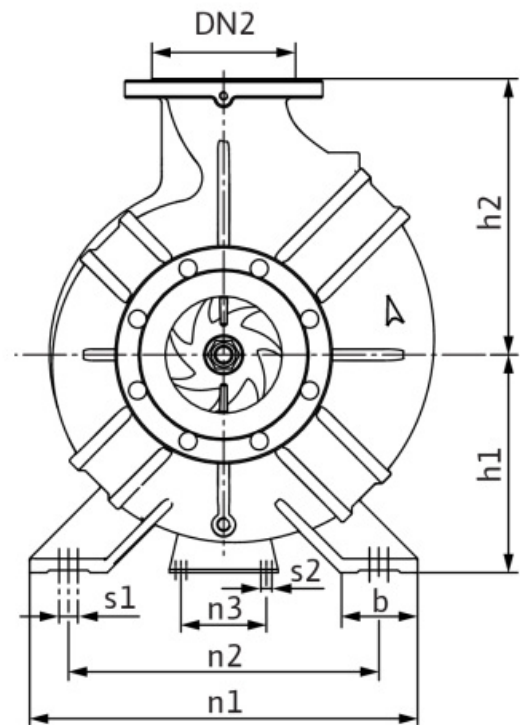
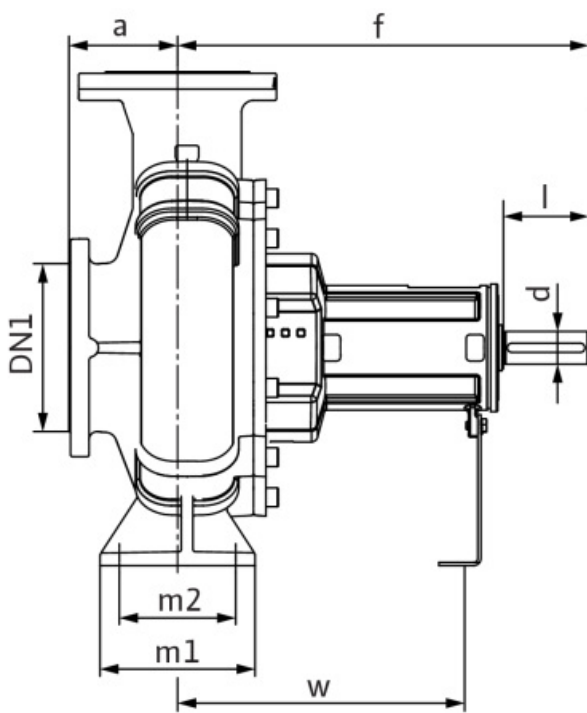
## Dimensions

Glanded standard pump  
Atmos GIGA-N 150/250-B

Project ID                      Untitled project 2025-03-01 20:23:09.313

Project name  
Installation location  
Customer pos. No.

Date                      2025-03-01



**Bareshaft**

Suction side                      DN 200, PN 16  
Discharge side                      DN 150, PN 16

**Dimensions**                      mm

Name	Value	Name	Value	Name	Value	Name	Value
a	160	h1	280	n1	500	s2	12
b	100	h1	280	n2	400	w	370
d	42	h2	375	n3	110	x	140
dL	23	h2	375	Ø k	295		
DN1	DN 200, PN 16	l	110	Ø d	266		
DN2	DN 150, PN 16	m1	200	Ø D	340		
f	530	m2	150	s1	20		