



Contact  
E-mail  
Phone

Customer

Contact  
E-mail  
Phone

## Technical data

### Rexa PRO C08 DA-53

With motor  
**P 17.1-12/EAD0X4-T**

Project ID                      Untitled project 2025-03-17 06:08:24.644

Project name

Installation location

Customer pos. No.

Date    2025-03-17

#### Pump

Pump type	Rexa PRO C08 DA-53
Installation type	Suspension device DN80/2RK
Free passage	80 mm
Nominal speed	1450
Frequency	50 Hz
Impeller type	Single vane impeller
Impeller construction	Closed

#### Impeller Ø

designed	203 mm
standard	203 mm
Max.	203 mm
Min.	163 mm

#### Discharge port

Pressure rating	PN10
Rated diameter	DN80
Standard	WILO-D

#### Suction port

Pressure rating	PN10
Rated diameter	DN80
Standard	WILO-S

#### Weights

Weight	max.	45 kg
Weight of motor		56 kg
Weight of unit	max.	101 kg

#### Materials

Pump housing	EN-GJL-250
Stationary wear ring	1.4308
Impeller	EN-GJS-500-7
Mobile wear ring	1.4462/1.4470

#### Motor

Motor name	P 17.1-12/EAD0X4-T
Number of poles	4
Rated power	4.5 kW
Rated speed	1405 1/min
Power input with rated power	5.8 kW
Rated voltage	400 ~3 V
Current input with rated power	9.4 A
Efficiency with rated power	78 %
cos phi with rated power	0.89
cos phi with starting	
Rated frequency	50 Hz
Operation type wet	S1
Operation type dry	
Starting current, direct starting	47 A
Starting current, star-delta	15.7 A
Starting torque	67 Nm
Inertia moment	0.0108 kg m <sup>2</sup>
Degree of protection	IP 68
Sel. explosion protection	ATEX
Ex-designation	
Ex-number	
Motor connection cable	7G1,5 H07RN-F
Max. fluid temperature	40 °C
Starts per hour max.	15

#### Duty point data

Volume flow	
Head	
Shaft power P2	
Hydr. efficiency η hyd.	
Power input P1	
Fluid	Water
Required pump NPSH	
Rotational speed	1,426 1/min
Max. flow	32.1 l/s
Head H(Q max)	8 m
Shut off head	16.5 m
Best efficiency point Q (BEP)	22.5 l/s
Best efficiency point H (BEP)	9.8 m

$$\text{Total efficiency} = \frac{P_2 * \text{Hydr. efficiency } \eta \text{ hyd.}}{P}$$

ArtNr



Contact  
E-mail  
Phone

Customer

Contact  
E-mail  
Phone

## Technical data

**Rexa PRO C08 DA-53**

With motor

**P 17.1-12/EAD0X4-T**

Project ID                      Untitled project 2025-03-17 06:08:24.644

Project name

Installation location

Date    2025-03-17

### **Tender text**

Submersible Sewage Pump as submersible, single-stage block unit in stationary, vertical installation to pump untreated sewage which doesn't attack the pump neither chemically nor mechanically. Pump with radially arranged discharge piece and axial pump intake. Service-friendly design by separated motor and pump casing. Pumping values to be guaranteed as per ISO 9906 Annex A



Contact  
E-mail  
Phone

Customer

Contact  
E-mail  
Phone

## Performance curves

### Rexa PRO C08 DA-53

With motor

### P 17.1-12/EAD0X4-T

Project ID

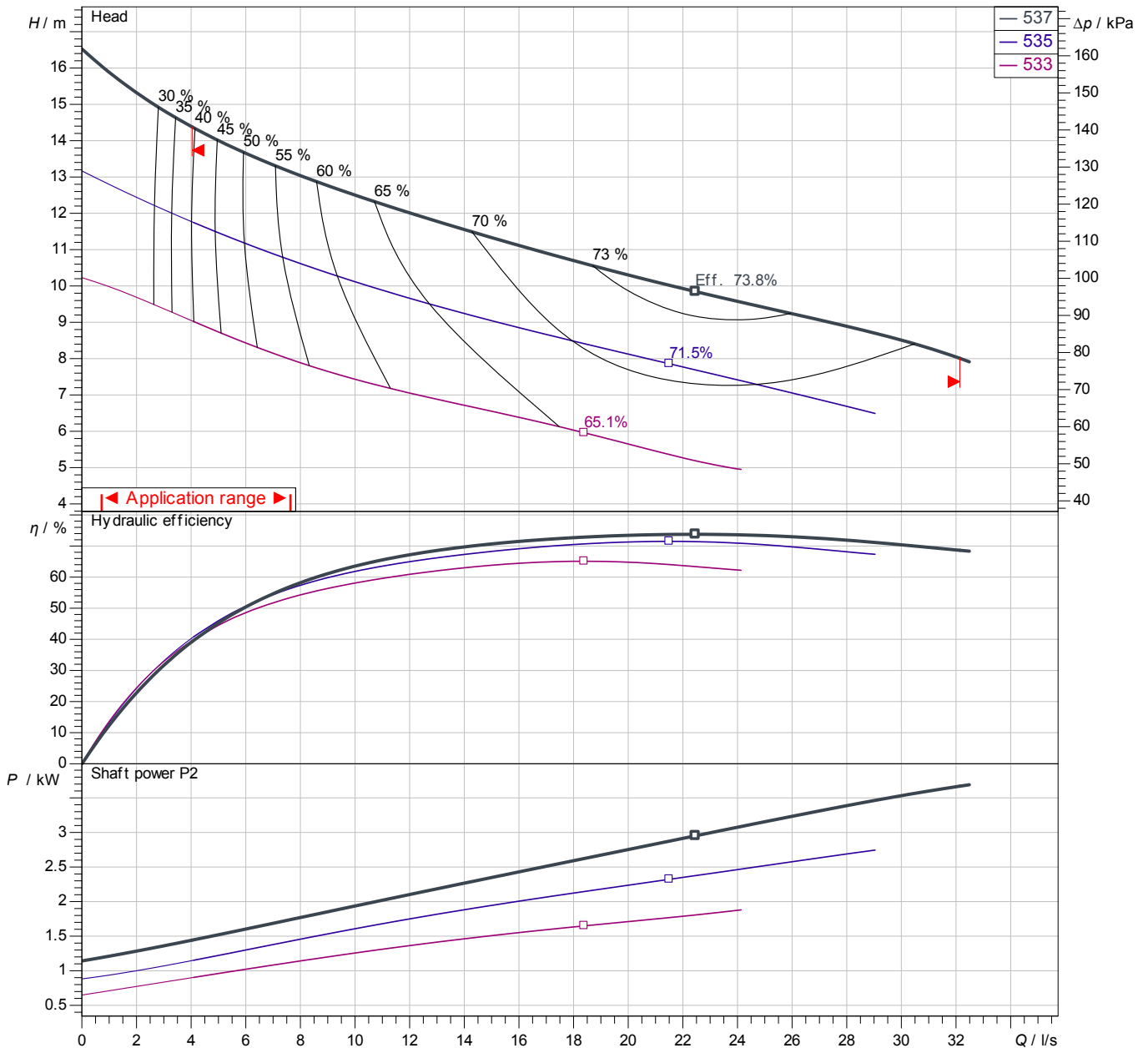
Untitled project 2025-03-17 06:08:24.644

Project name

Installation location

Customer pos. No.

Date 2025-03-17



Power data referred to: Water; 20°C; 998.3kg/m<sup>3</sup>; 1.005mm<sup>2</sup>/s  
Tolerance as per ISO 9906 / Annex A.2

#### Pump

Impeller Ø	designed	203 mm
Nominal speed		1,405 1/min
Frequency		50 Hz
Impeller type		Single vane impeller

#### Motor

Rated power	4.5 kW
Sel. explosion protection	ATEX

#### Duty point data

Volume flow	
Head	
Shaft power P2	
Hydr. efficiency η hyd.	
Power input P1	
Required pump NPSH	
Rotational speed	1426 1/min

## Dimensions

### Rexa PRO C08 DA-53

With motor

### P 17.1-12/EAD0X4-T

Project ID

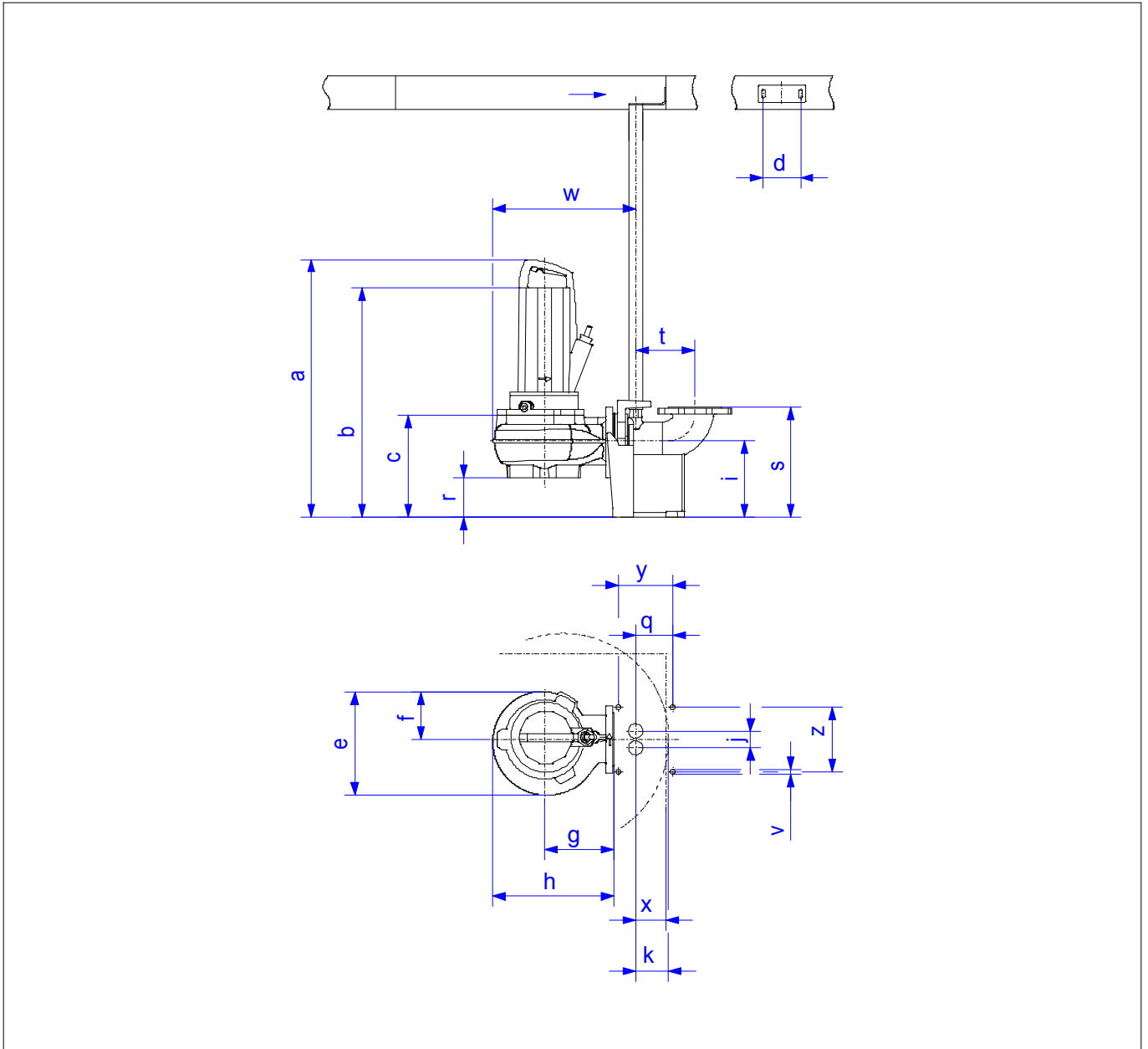
Untitled project 2025-03-17 06:08:24.644

Project name

Installation location

Customer pos. No.

Date 2025-03-17



#### Dimensions

Name	Value	Name	Value
a	687 mm	k	95 mm
b = min. water level	268 mm	q	69 mm
c	268 mm	r	119 mm
d	110 mm	s	300 mm
e	235 mm	t	166 mm
f	124 mm	v	15 mm
g	150 mm	w	417 mm
h	268 mm	x	90 mm
i	210 mm	y	120 mm
j	50 mm	z	170 mm

#### Connections

Suction port	DN80 PN10
Discharge port	DN80 PN10
Suspension device	DN80/2RK