

**Customer**

## Technical data

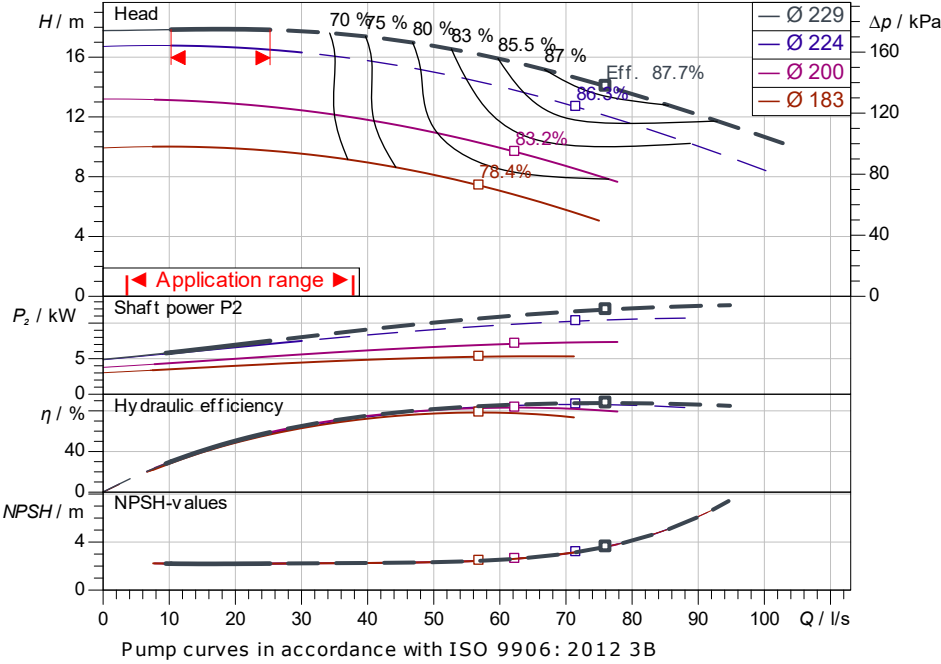
### Glanded standard pump Atmos GIGA-NHT 125/200-7.5/4-S2

Project ID                      Untitled project 2025-03-01 20:45:47.557

Project name  
Installation location  
Customer pos. No.

Date                      2025-03-01

#### Duty chart



#### Requested data

Flow  
Head  
Media                      Water 100 %  
Fluid temperature       20.00 °C  
Density                   998.30 kg/m<sup>3</sup>  
Kin. viscosity            1.00 mm<sup>2</sup>/s

#### Hydraulic data (Duty point)

Flow  
Head  
Shaft power P2  
Hydraulic efficiency  
NPSH  
Impeller size            229

#### Product data

Glanded standard pump  
Atmos GIGA-NHT 125/200-7.5/4-S2  
Max. operating pressure   2,500 kPa  
Fluid temperature       -20 °C ... +350 °C  
Max. ambient temperature   50 °C  
Minimum efficiency index (MEI)

#### Motordata per Motor/Pump

Motor efficiency level     IE3  
Mains connection        3~ 400 V / 50 Hz  
Permitted voltage tolerance   +10 %  
Max. speed               1,460 1/min  
Rated power P2           7.50 kW  
Rated current            13.90 A  
Power factor             0.8  
Efficiency                50% / 75% / 100%       90.5/90.8/90.6%  
Degree of protection     IP55  
Insulation class         F  
Motor protection         No

#### Fitting dimensions

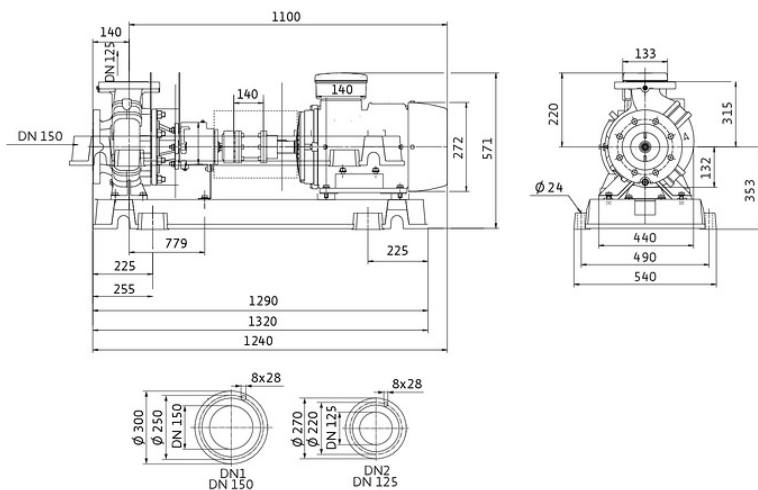
Pipe connection on the suction side   DN 150, PN 25  
Pipe connection (pressure side)       DN 125, PN 25  
Port to Port

#### Materials

Pump housing             EN-GJS-400-15  
  
Impeller                 EN-GJL-200  
Shaft                    1.4028  
Shaft seal               AQ1VGG

#### Information for order placements

Weight approx.  
Item number              6098323



**Dimensions**                      mm



Contact  
E-mail  
Phone

**Customer**

Contact  
E-mail  
Phone

## Hydraulic data

Glanded standard pump

Atmos GIGA-NHT 125/200-7.5/4-S2

Project ID

Untitled project 2025-03-01 20:45:47.557

Project name

Installation location

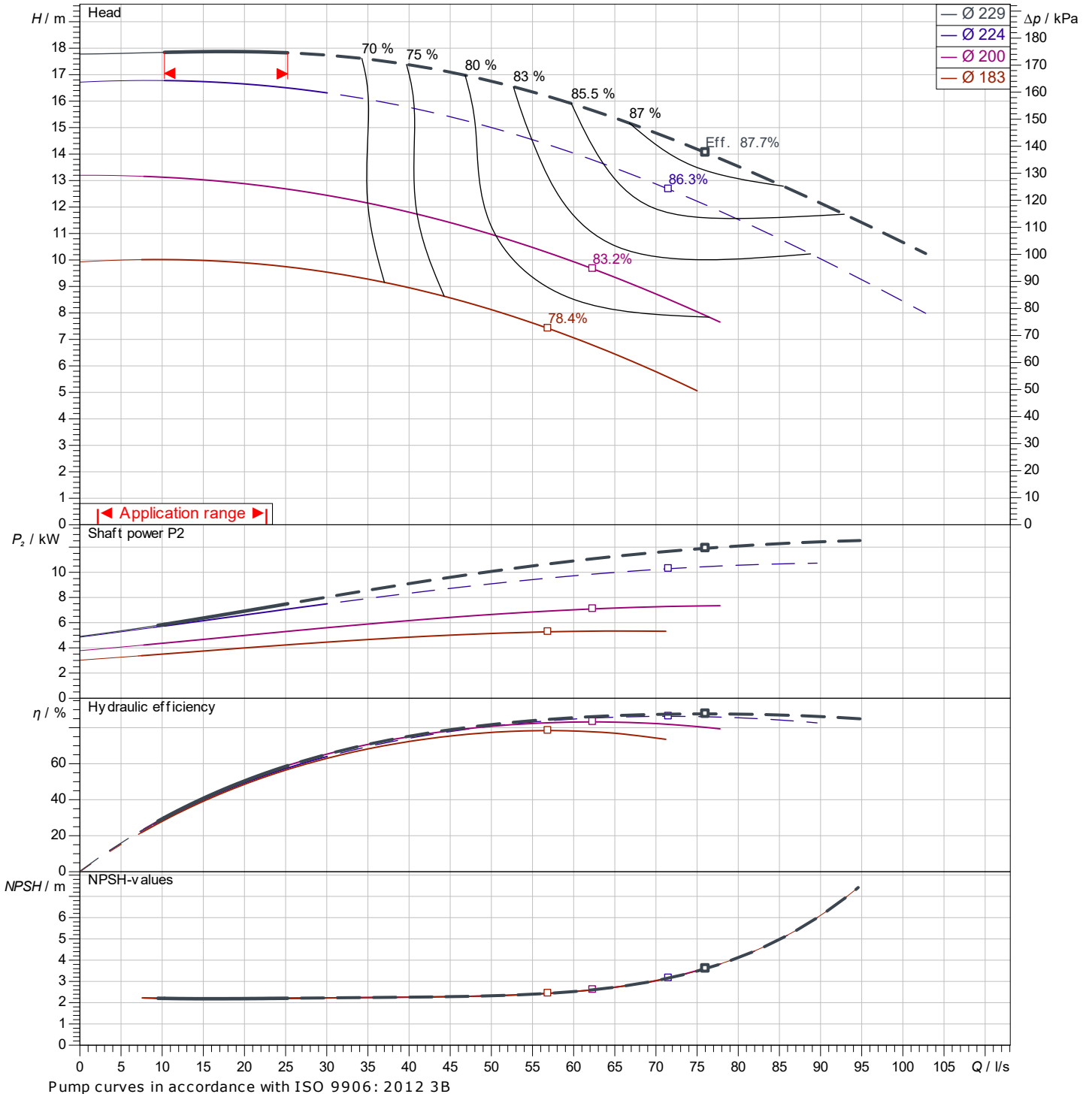
Customer pos. No.

Date 2025-03-01

## Operating data

Rotational speed <b>1467 1/min</b>	Frequency <b>50 Hz</b>	Duty point <b>Q =</b>	<b>H =</b>	Suction port <b>DN 150</b>	Discharge port <b>DN 125</b>
---------------------------------------	---------------------------	--------------------------	------------	-------------------------------	---------------------------------

Power data referred to: Water; 20°C; 998.3kg/m<sup>3</sup>; 1.005mm<sup>2</sup>/s ±10 % tolerance with linear U/f frequency control



Pump curves in accordance with ISO 9906: 2012 3B

Contact  
E-mail  
Phone

**Customer**

Contact  
E-mail  
Phone

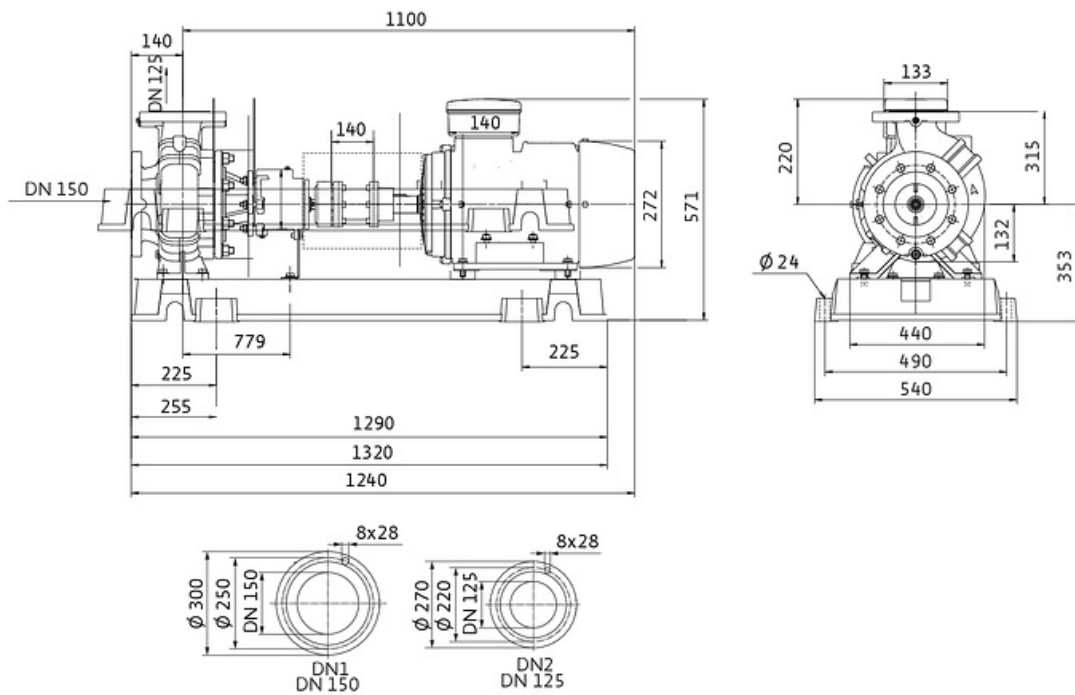
## Dimensions

Glanded standard pump  
Atmos GIGA-NHT 125/200-7.5/4-S2

Project ID                      Untitled project 2025-03-01 20:45:47.557

Project name  
Installation location  
Customer pos. No.

Date                      2025-03-01



**Standard**

Suction side                      DN 150, PN 25  
Discharge side                    DN 125, PN 25

**Dimensions**                    mm

Name	Value	Name	Value	Name	Value	Name	Value
------	-------	------	-------	------	-------	------	-------